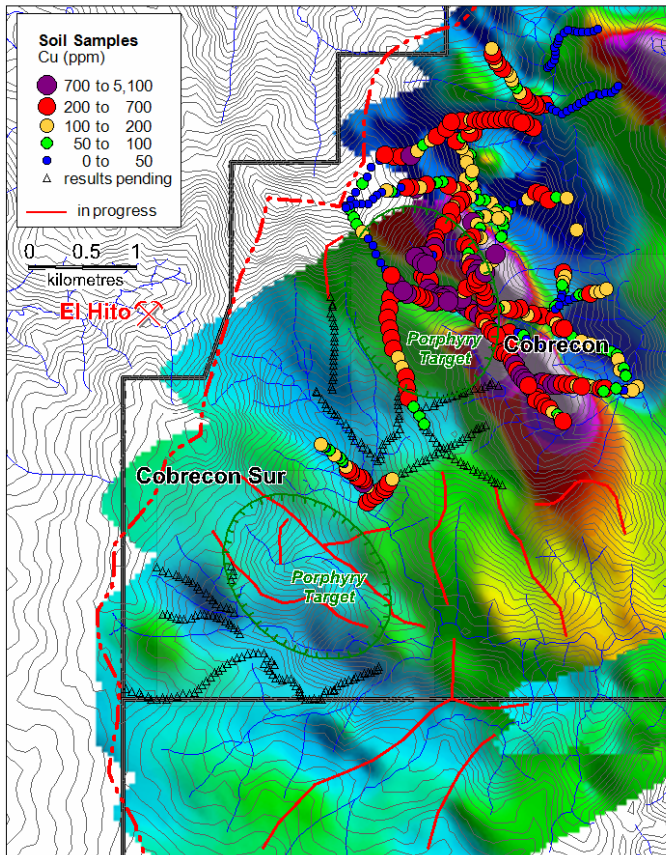


Figure 1: Cobrecon Drill Target Maps. Preliminary results from an on-going program of ridge soil sampling; note the number of samples pending results.

Airborne Magnetics



Gridded Silt Cu (ppm)

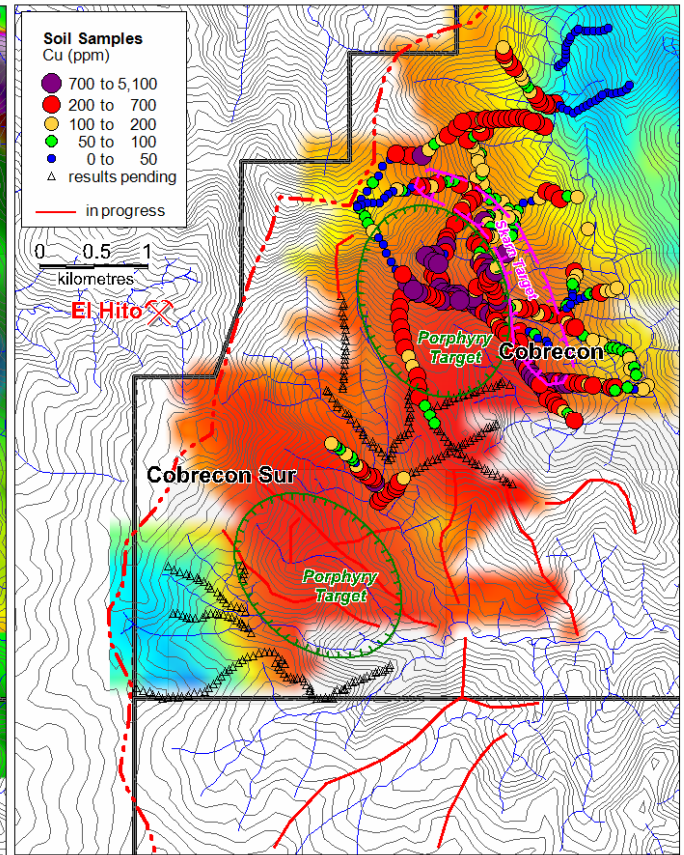


Figure 2: Regional View of Cobrecon and Cobrecon Sur - Airborne magnetic, gridded copper stream sediment anomalies and soil ridge anomalies. The on-going program of ridge soil sampling aims to better define drill targets. Note - samples for which results have not yet been received are shown as black triangles. Red lines indicate sample traverses which are in progress.



Figure 3: Quartz stockwork at Cobrecon Sur: This stockwork persists over at least 1km along the main northwest strike of the soil anomaly, and is at least 250 metres wide, with disseminated chalcopyrite extending beyond the veining.