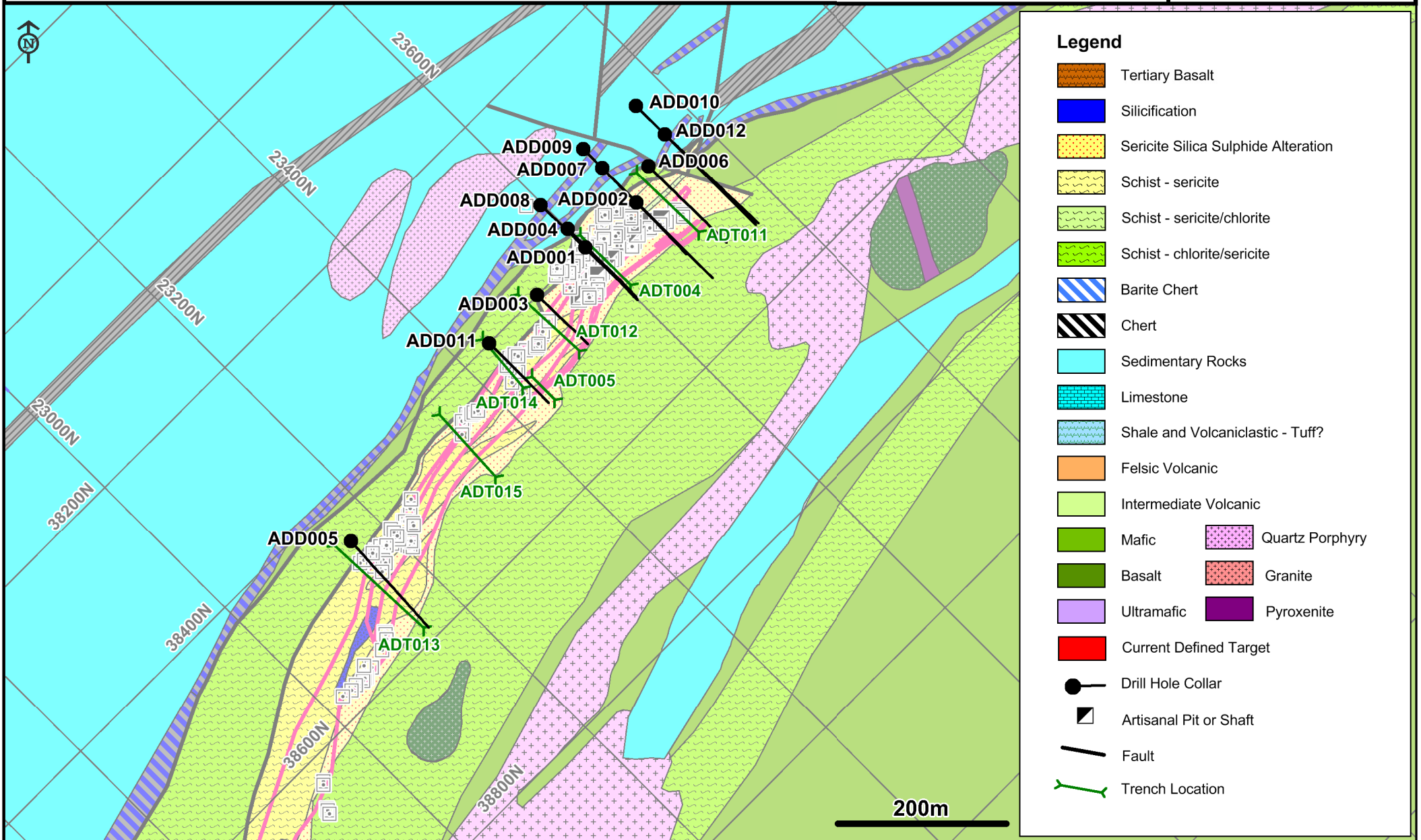


Mato Bula Trend

Adi Dairo Concession
Adyabo Project, Ethiopia

Da Tambuk Drill Hole Location



Legend

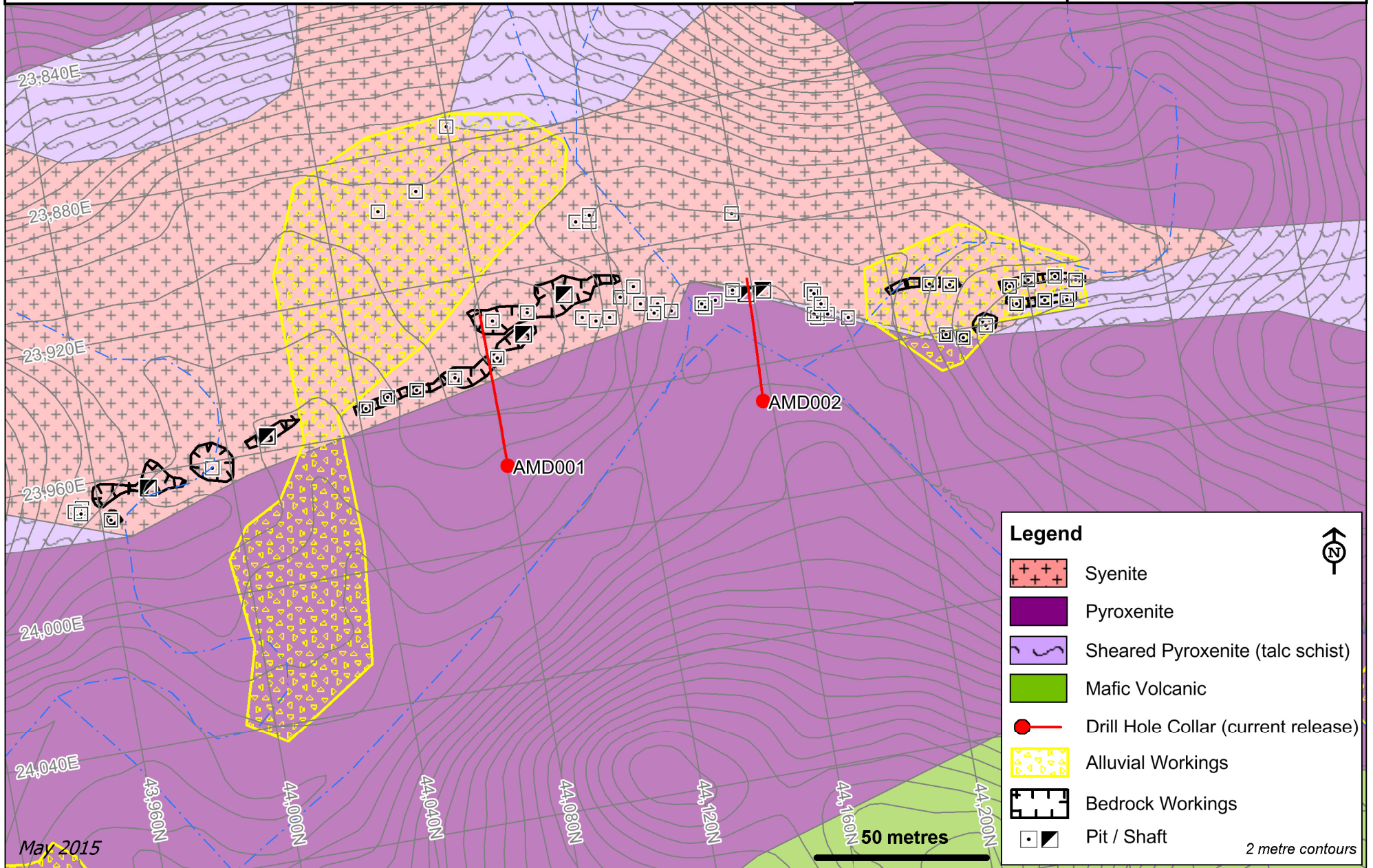
- Tertiary Basalt
- Silicification
- Sericite Silica Sulphide Alteration
- Schist - sericite
- Schist - sericite/chlorite
- Schist - chlorite/sericite
- Barite Chert
- Chert
- Sedimentary Rocks
- Limestone
- Shale and Volcaniclastic - Tuff?
- Felsic Volcanic
- Intermediate Volcanic
- Mafic
- Basalt
- Ultramafic
- Current Defined Target
- Drill Hole Collar
- Artisanal Pit or Shaft
- Fault
- Trench Location
- Quartz Porphyry
- Granite
- Pyroxenite

Mugnae Andi Prospect

West Shire Concession

Adyabo Project, Ethiopia

Mugnae Andi Drill Hole Locations



**Adyabo Project, Ethiopia
Published Drill Intercepts**

Hole ID		From (m)	To (m)	Interval (m)*	Copper %	Gold g/t	Silver g/t	Zinc %	Local Azimuth	Dip	Prospect
WMD001		53.80	71.15	17.35	1.65	0.40	5	0.10	88	-46	Mato Bula North
	including	59.60	71.15	11.55	2.05	0.47	5	0.11			
WMD002		40.42	57.14	16.72	0.59	0.75	3	0.18	90	-45	Mato Bula
	including	48.33	57.14	8.81	0.94	0.96	2	0.09			
		92.14	97.14	5.00	0.92	8.77	1	0.03			
	including	92.14	95.14	3.00	1.36	12.84	2	0.02			
WMD003		70.71	72.59	1.88	0.43	4.44	3	0.07	88	-46	Mato Bula
		124.90	128.00	3.10	1.10	4.25	1	0.00			
WMD004		56.05	73.62	17.57	1.05	4.20	1	0.00	269	-45	Mato Bula
	including	60.72	73.62	12.90	1.34	5.57	2	0.00			
		127.10	135.30	8.20	0.73	4.90	10	0.21			
	including	127.10	132.85	5.75	0.94	6.40	11	0.23			
WMD005		82.48	89.09	6.61	0.26	5.30	0	0.02	272	-46	Mato Bula
WMD006		53.31	66.82	13.51	0.06	15.15	1	0.00	271	-47	Mato Bula
	including	64.45	65.15	0.70	0.04	284.50	17	0.02			
		86.20	98.48	12.28	0.30	12.25	1	0.00			
	including	93.19	98.48	5.29	0.30	22.33	1	0.00			
WMD007		179.75	207.95	28.20	0.24	8.50	2	0.00	274	-46	Mato Bula
	including	189.25	206.80	17.55	0.27	13.18	2	0.01			
	and including	195.80	206.80	11.00	0.35	19.55	3	0.01			
WMD008		77.20	105.00	27.80	0.07	1.81	0	0.00	279	-50	Mato Bula
	including	94.60	98.60	4.00	0.04	5.75	0	0.00			
WMD009		164.20	179.07	14.87	0.04	4.49	0	0.00	273	-48	Mato Bula
	including	166.40	174.30	7.90	0.05	7.95	1	0.00			
WMD010	No Significant Results								272	-46	Mato Bula
WMD011		97.40	101.45	4.05	0.51	1.24	1	0.00	274	-45	Mato Bula
		126.25	140.23	13.98	0.74	2.28	9	0.53			
	including	131.45	136.88	5.43	0.82	4.88	11	0.43			
WMD012		105.62	118.60	12.98	0.87	4.40	0	0.00	272	-45	Mato Bula
	including	105.62	108.72	3.10	3.05	17.08	2	0.00			
		141.40	142.40	1.00	0.08	14.60	0	0.00			
		177.63	183.17	5.54	0.34	0.68	4	0.71			
WMD013		153.79	160.10	6.31	0.48	1.71	0	0.04	88	-45	Mato Bula
	including	158.32	160.10	1.78	0.62	4.17	0	0.02			
		203.70	207.65	3.95	0.37	3.54	1	0.03			
WMD014		220.18	221.08	0.90	0.73	0.88	0	0.00	90	-60	Mato Bula
		231.70	233.20	1.50	0.35	0.61	0	0.00			
		261.15	263.50	2.35	0.61	4.23	0	0.00			
WMD015		126.75	129.50	2.75	0.82	0.83	0	0.00	269	-48	Mato Bula
		189.10	196.95	7.85	0.41	0.44	1	0.06			
WMD016		165.85	170.14	4.29	0.61	8.06	0	0.01	270	-50	Mato Bula
		182.85	183.85	1.00	0.92	0.48	0	0.00			
WMD017		55.00	57.70	2.70	0.26	0.49	0	0.00	270	-46	Mato Bula
WMD018		186.90	193.30	6.40	1.70	1.33	8	0.18	90	-47	Mato Bula
	including	189.40	192.60	3.20	2.85	1.66	13	0.28			
WMD019		171.13	205.17	34.04	0.29	5.65	1	0.00	89	-62	Mato Bula
	including	171.98	189.46	17.48	0.43	9.50	2	0.01			
WMD020	No Significant Results								90	-50	Mato Bula
WMD021		114.73	115.53	0.80	0.02	4.25	3	0.02	90	-48	Mato Bula
		156.39	159.57	3.18	0.12	1.11	0	0.00			
WMD022		74.48	78.95	4.47	0.87	0.17	13	0.59	90	-49	Mato Bula North
		90.85	98.00	7.15	0.35	1.12	1	0.01			
		105.30	108.25	2.95	0.40	0.87	2	0.01			
WMD023		109.00	113.60	4.60	1.26	0.48	5	0.05	90	-56	Mato Bula North
	including	113.10	113.60	0.50	3.15	4.09	8	0.04			
		126.50	133.50	7.00	0.86	0.87	2	0.02			
		138.80	149.63	10.83	0.59	0.49	2	0.01			
WMD024		74.70	94.95	20.25	1.97	0.17	7	0.22	91	-63	Mato Bula North
	including	74.70	81.25	6.55	4.88	0.22	17	0.35			
		113.35	118.20	4.85	0.65	5.75	1	0.02			
		138.45	141.20	2.75	0.04	8.76	0	0.00			
WMD025		245.80	247.80	2.00	0.15	1.27	0	0.00	89	-62	Mato Bula
		249.80	257.40	7.60	0.04	0.72	0	0.00			
		260.40	288.27	27.87	0.07	1.05	0	0.00			
	including	278.42	287.27	8.85	0.14	1.81	0	0.00			
WMD026		224.45	226.65	2.20	0.69	0.35	5	0.02	87	-58	Mato Bula
WMD027		204.30	228.80	24.50	0.61	1.67	8	0.96	271	-53	Mato Bula
	including	206.65	212.80	6.15	0.89	3.21	13	1.75			
	and including	209.45	212.80	3.35	0.61	5.45	13	0.81			

Hole ID		From (m)	To (m)	Interval (m)*	Copper %	Gold g/t	Silver g/t	Zinc %	Local Azimuth	Dip	Prospect
WMD028		46.03	55.25	9.22	0.72	0.61	1	0.02	270	-56	Mato Bula
	including	48.48	53.30	4.82	1.13	0.90	2	0.01			
		62.35	73.00	10.65^	0.89	3.38	9	0.47			
	including	70.45	72.15	1.70	1.78	19.93	41	2.10			
		76.80	85.00	8.20	0.33	1.13	3	0.48			
	including	78.80	82.00	3.20	0.35	1.98	4	0.71			
WMD029		180.50	184.12	3.62	0.38	1.09	0	0.00	270	-51	Mato Bula
WMD030		268.35	271.13	2.78	0.21	0.58	0	0.00	270	-65	Mato Bula
		293.75	298.60	4.85^	2.55	0.50	21	0.06			
WMD031		280.60	294.60	14.00	0.08	1.01	0	0.00	88	-56	Mato Bula
	including	281.40	289.00	7.60	0.11	1.31	0	0.00			
		305.50	317.30	11.80	0.12	0.70	0	0.00			
WMD032		101.09	124.00	22.91	0.04	14.34	0	0.00	315	-60	Mato Bula
	including	101.09	105.65	4.56	0.01	2.27	0	0.00			
	including	112.50	121.00	8.50	0.08	36.92	0	0.00			
	and including	115.97	121.00	5.03	0.10	59.97	0	0.00			
WMD033		213.85	226.45	12.60	0.01	0.51	0	0.00	90	-63	Mato Bula
		234.20	240.20	6.00	0.02	0.41	0	0.00			
WMD034		339.35	359.35	20.00	0.05	0.80	0	0.00	91	-66	Mato Bula
WMD035		106.05	107.00	0.95	0.10	14.50	0	0.00	271	-47	Mato Bula
WMD036		186.45	189.17	2.72	0.13	0.41	0	0.00	316	-66	Mato Bula
WMD037	No Significant Results								315	-62	Mato Bula
WMD038		75.10	76.10	1.00	0.02	0.80	0	0.00	273	-47	Mato Bula
WMD039		98.50	99.50	1.00	0.43	1.77	0	0.03	274	-45	Mato Bula
WMD040		38.00	52.10	14.1^	1.59	0.07	5	0.13	91	-50	Mato Bula North
WMD041		17.80	59.35	41.55^	0.97	0.14	5	0.08	89	-65	Mato Bula North
	including	38.55	45.80	7.25^	2.19	0.08	14	0.09			
AD001		15.10	22.60	7.50	0.00	2.04	0	0.00	330	-45	Adi Gozomo
ADD001		41.30	60.83	19.53	0.10	3.51	2	0.12	90	-47	Da Tambuk
ADD002		52.75	64.75	12.00	0.32	17.34	4	0.07	91	-44	Da Tambuk
	including	52.75	57.75	5.00	0.59	40.97	7	0.06			
ADD003		83.42	86.42	3.00	0.02	4.20	4	0.13	90	-48	Da Tambuk
ADD004		86.21	95.90	9.69	0.26	3.96	2	0.09	90	-46	Da Tambuk
	including	87.21	89.21	2.00	0.09	13.25	3	0.19			
ADD005		56.10	61.20	5.10	0.05	0.60	0	0.05	94	-46	Da Tambuk
ADD006		99.15	115.80	16.65	0.21	3.29	5	0.38	91	-47	Da Tambuk
	including	107.50	111.80	4.30	0.22	10.13	9	0.68			
		120.80	127.80	7.00	0.03	0.56	2	0.11			
ADD007		123.55	137.10	13.55	0.08	4.65	0	0.05	91	-48	Da Tambuk
	including	123.55	129.10	5.55	0.16	10.78	1	0.04			
ADD008		131.75	132.65	0.90	0.03	1.81	0	0.03	90	-51	Da Tambuk
		138.00	144.00	6.00	0.02	0.40	0	0.03			
ADD009		203.00	206.00	3.00	0.05	0.96	1	0.13	92	-50	Da Tambuk
		210.00	217.00	7.00	0.02	0.42	0	0.13			
		220.00	224.00	4.00	0.03	0.57	0	0.11			
ADD010		211.00	238.00	27.00	0.04	0.79	1	0.08	92	-53	Da Tambuk
	including	228.00	230.00	2.00	0.04	3.50	0	0.05			
ADD011	No Significant Results								86	-52	Da Tambuk
ADD012		141.30	160.70	19.40	0.08	3.85	5	0.20	84	-50	Da Tambuk
	including	143.10	152.80	9.70	0.07	6.89	5	0.09			
WHD001		9.23	14.10	4.87	0.42	0.61	0	0.01	273	-51	Hanbassa
WHD002		63.10	67.10	4.00	0.22	0.48	1	0.01	273	-50	Hanbassa
		78.90	80.90	2.00	0.29	1.57	1	0.01			
WHD003		45.00	46.00	1.00	0.01	2.39	0	0.00	273	-50	Hanbassa
AMD001		23.90	27.20	3.30		2.82			306	-61	Mugnae Andi
		47.75	50.75	3.00		1.57					
AMD002		36.90	44.90	8.00		2.48			308	-60	Mugnae Andi
	including	42.90	44.90	2.00		5.90					

* Intervals stated are 40-100% true thickness. Intervals use a 0.3 gram per tonne gold cutoff value. No top cut has been used on assay values.

^ Copper interval, not subject to gold cutoff criteria