

Figure 1: PMI Gold's Project Locations in South-west Ghana

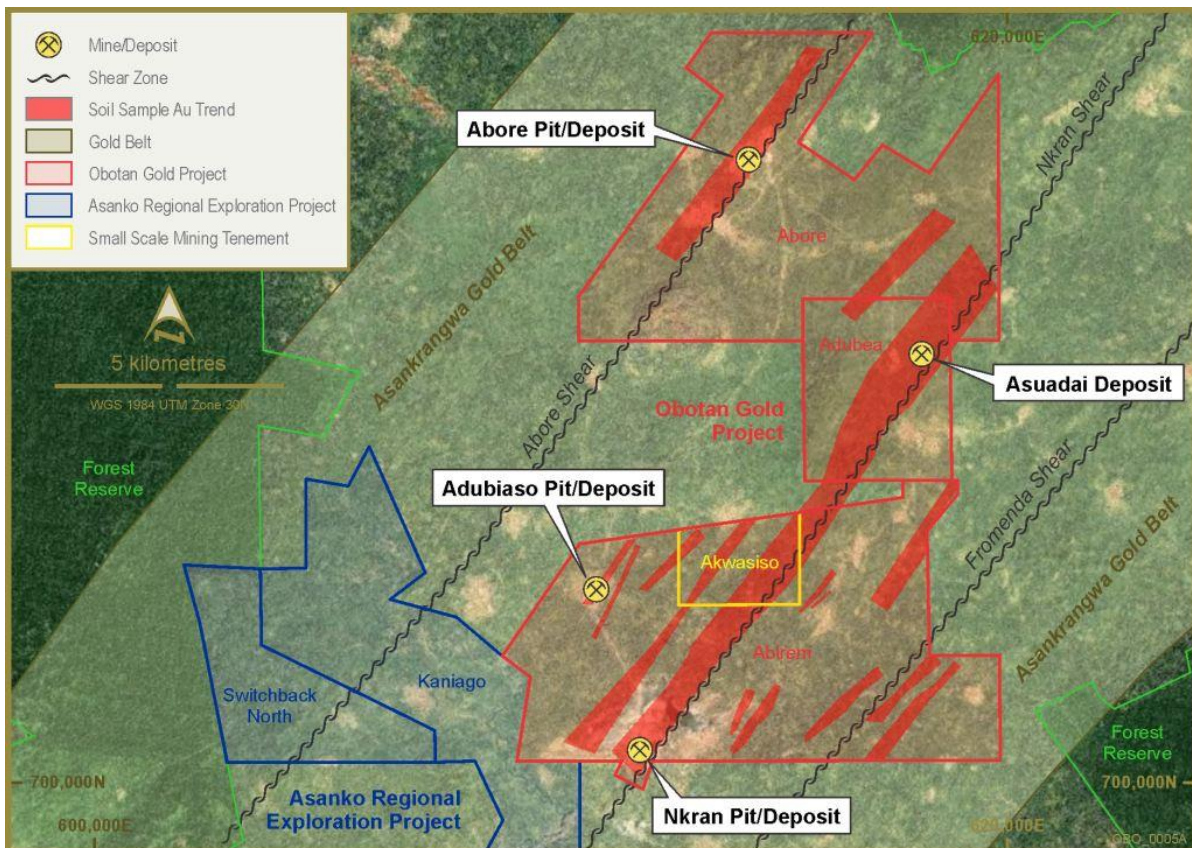


Figure 2: Obotan Project - Location of PMI Gold's Concessions and Project Deposits



Figure 3(a & b) CCC meeting at Obotan; Figure 3(c & d) Grading Improvement to Local Roads

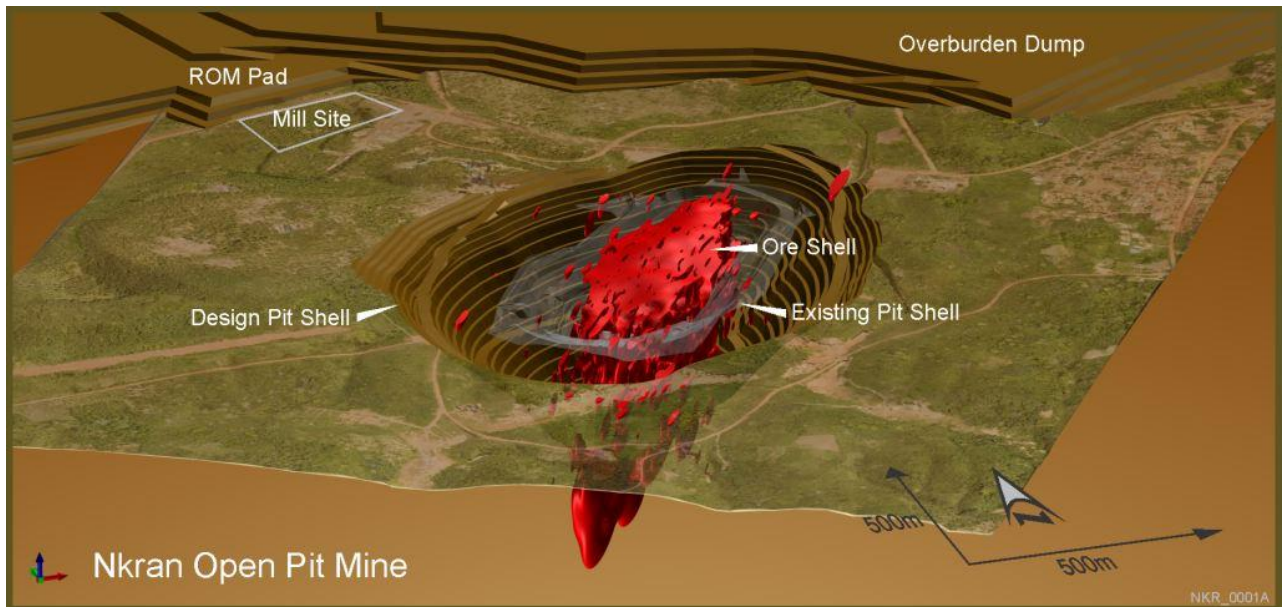


Figure 4: Obotan Project – 3D View of the Nkran Deposit and Proposed Open Pit Design



5(a) Drill rigs on site



5(b) Sample Preparation Facility



5(c) Geologist at Kubi Project

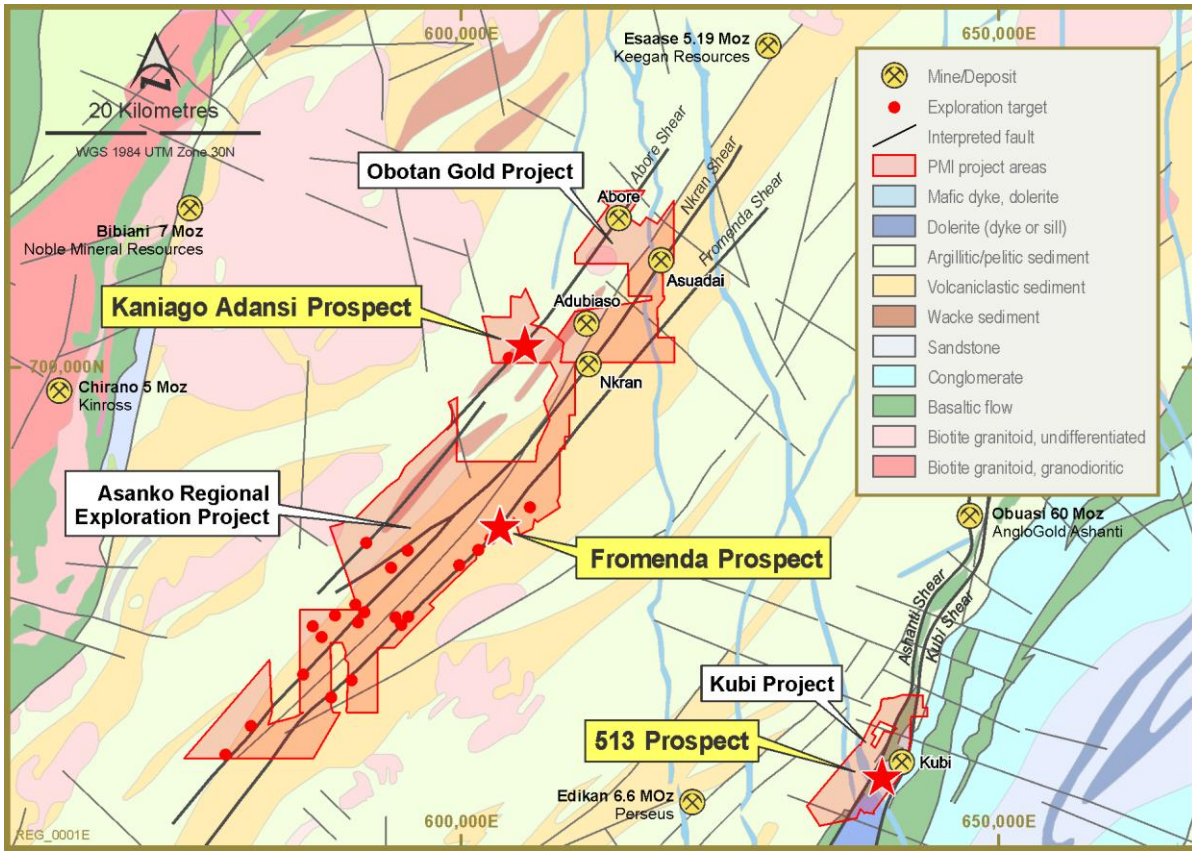


Figure 6: Location of Exploration Focus During Quarter - Kaniago (Adansi) and Fromenda Prospects (Obotan Area of Influence) and 513 Prospect (Kubi)

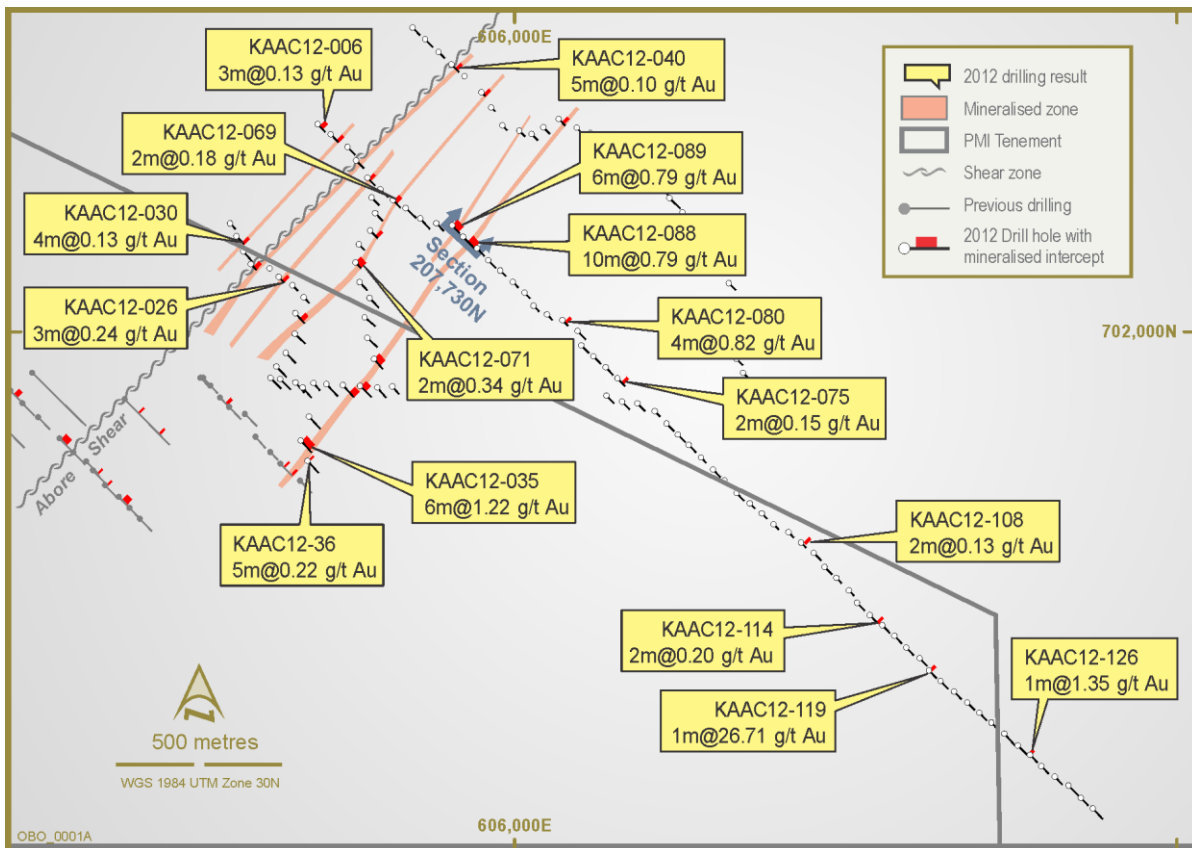


Figure 7: Kaniago (Adansi) Prospect - Newly Discovered Zones of Mineralization Latest Aircore Drilling Results released 20 June 2012

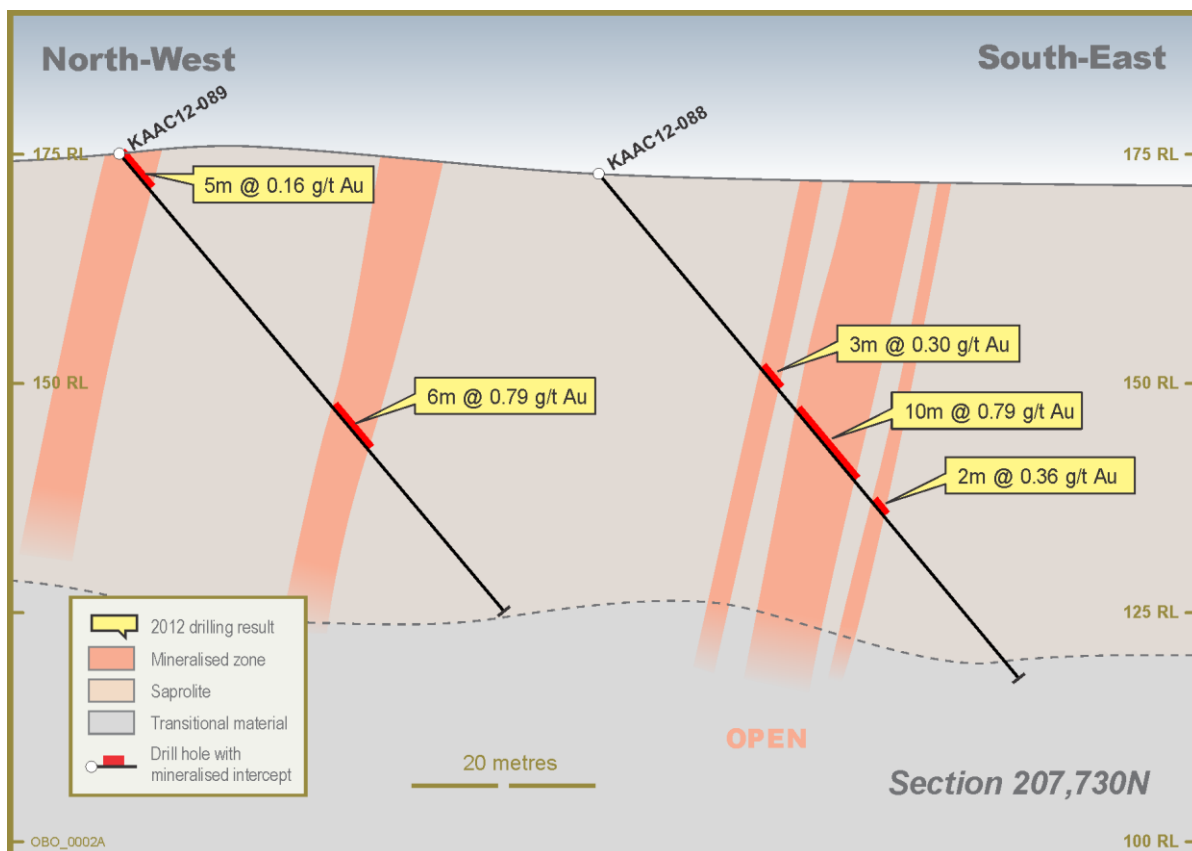


Figure 8: Kaniago (Adansi) Prospect - Section 207,730N

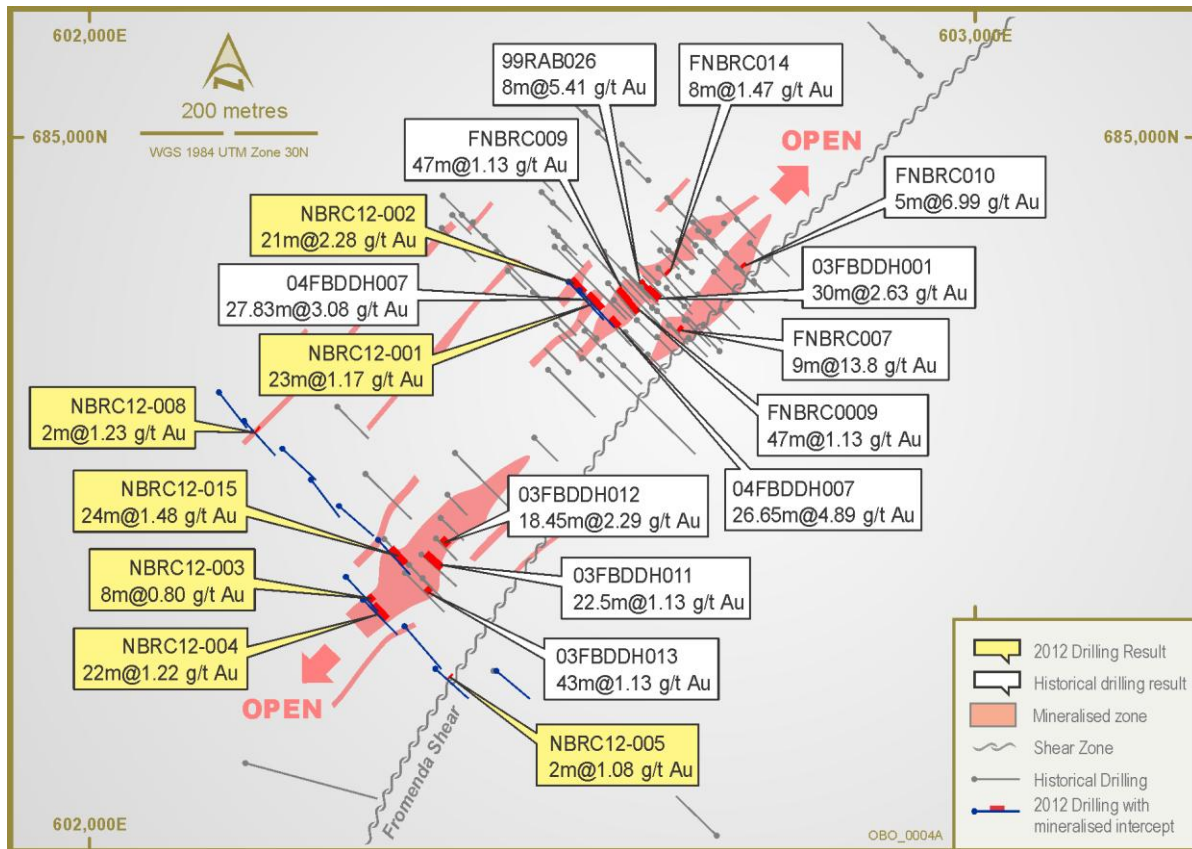


Figure 9: Fromenda Prospect - RC Collar Plan and Zones of Delineated Mineralization

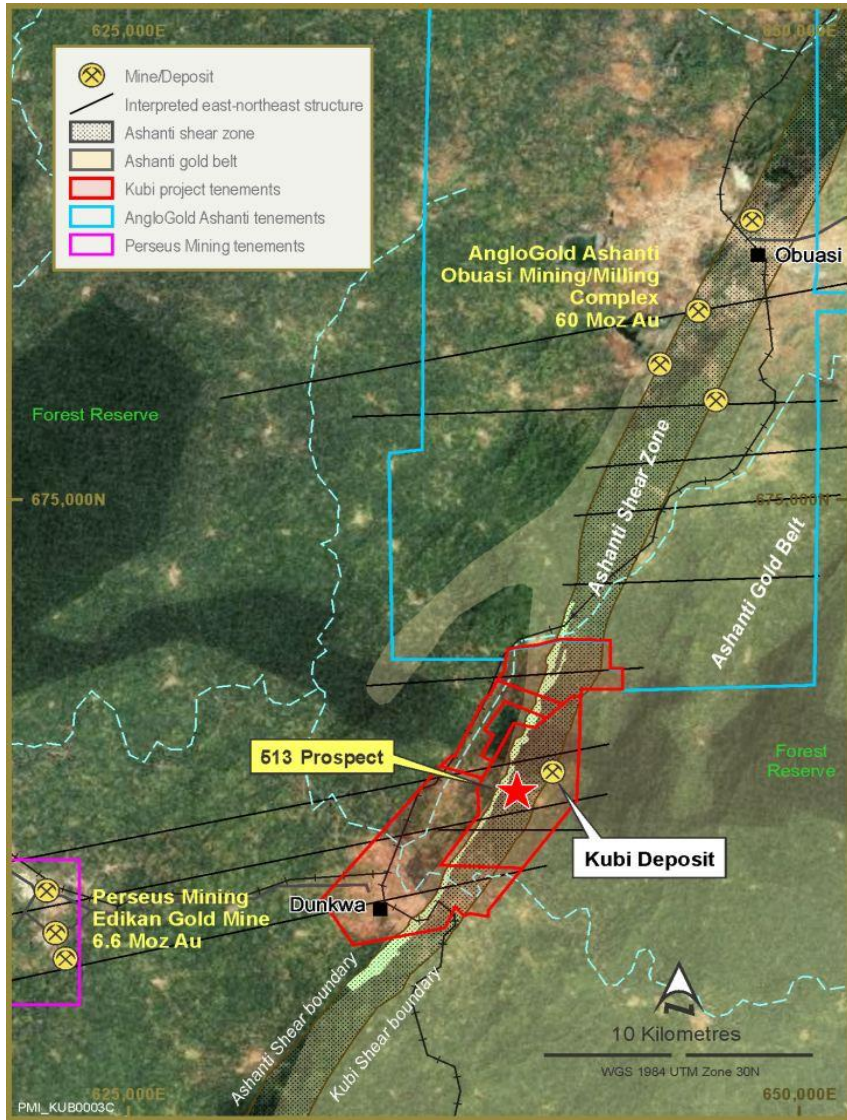


Figure 10: Kubi Project - Location of the 513 Prospect

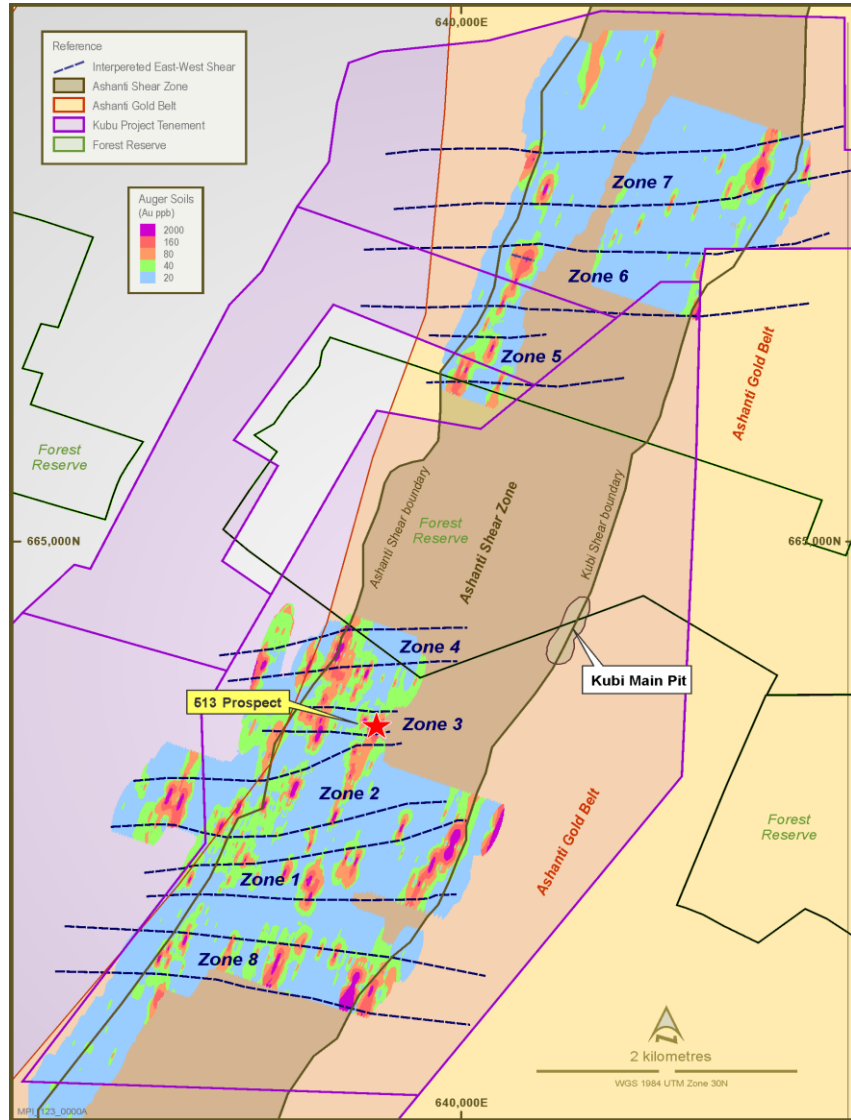


Figure 11: Kubi Project – 201/2012 Gold Geochemical Anomalies from Auger Sampling Results



Figure 12: 513 Prospect - Zone of Defined Mineralization

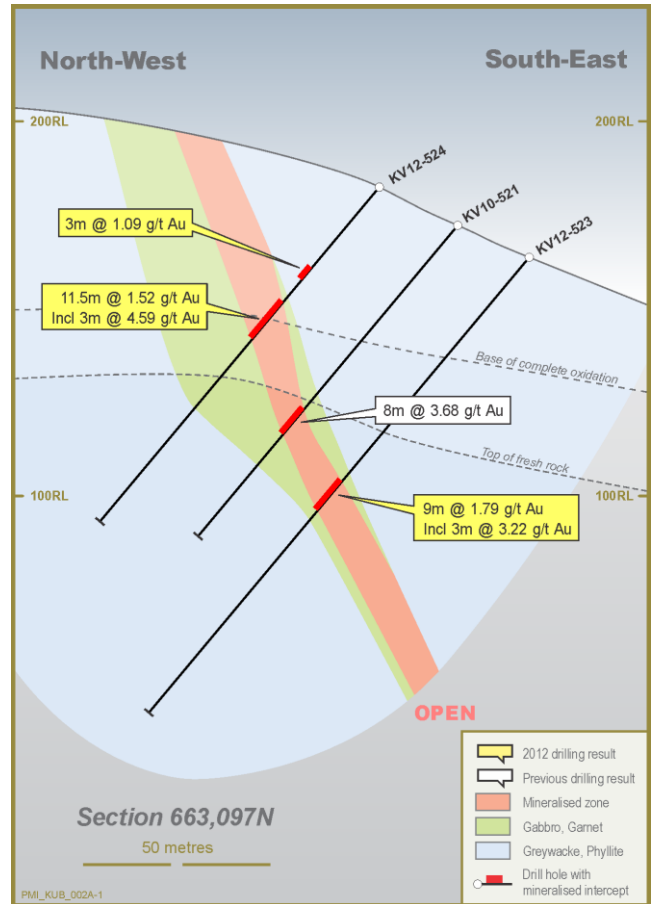


Figure 13: 513 Prospect - Cross Section 663,097N

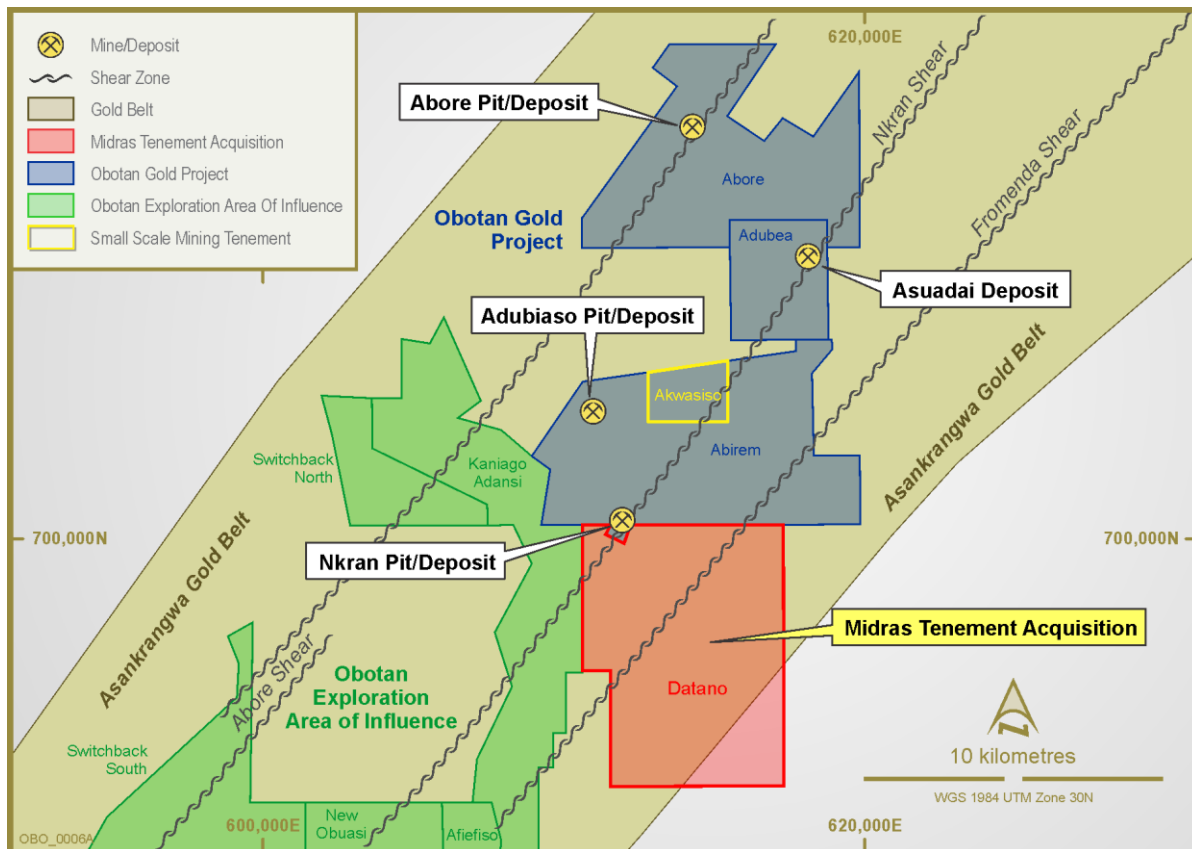


Figure 14: Location of Datano Mining Lease in proximity to PMI's Obotan Gold Project