

Figure 1 : Stawell Project Location Plan, Stawell Gold Mine

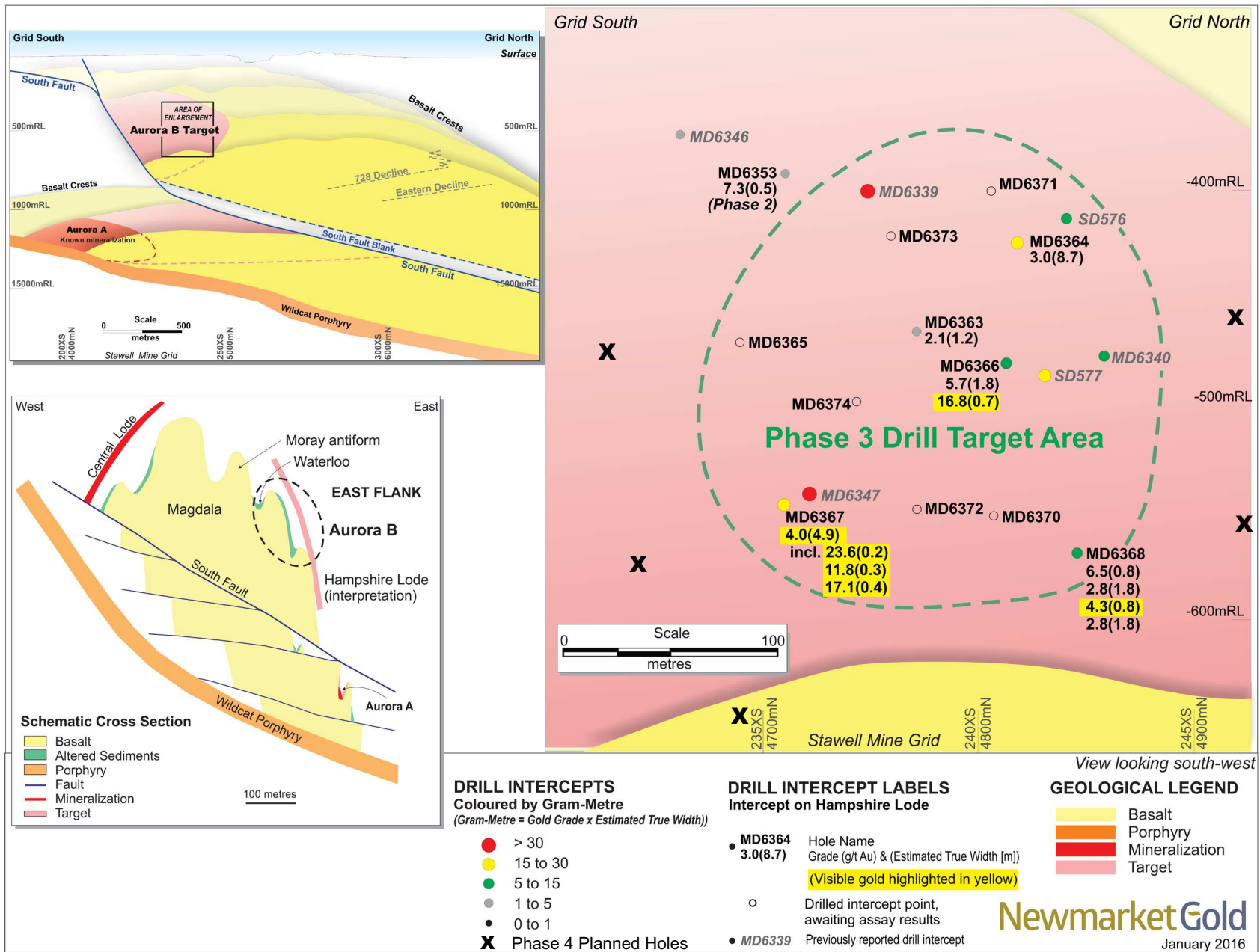


Figure 2 : Stawell Aurora B East Flank Target Longitudinal Projection and Schematic Cross Section

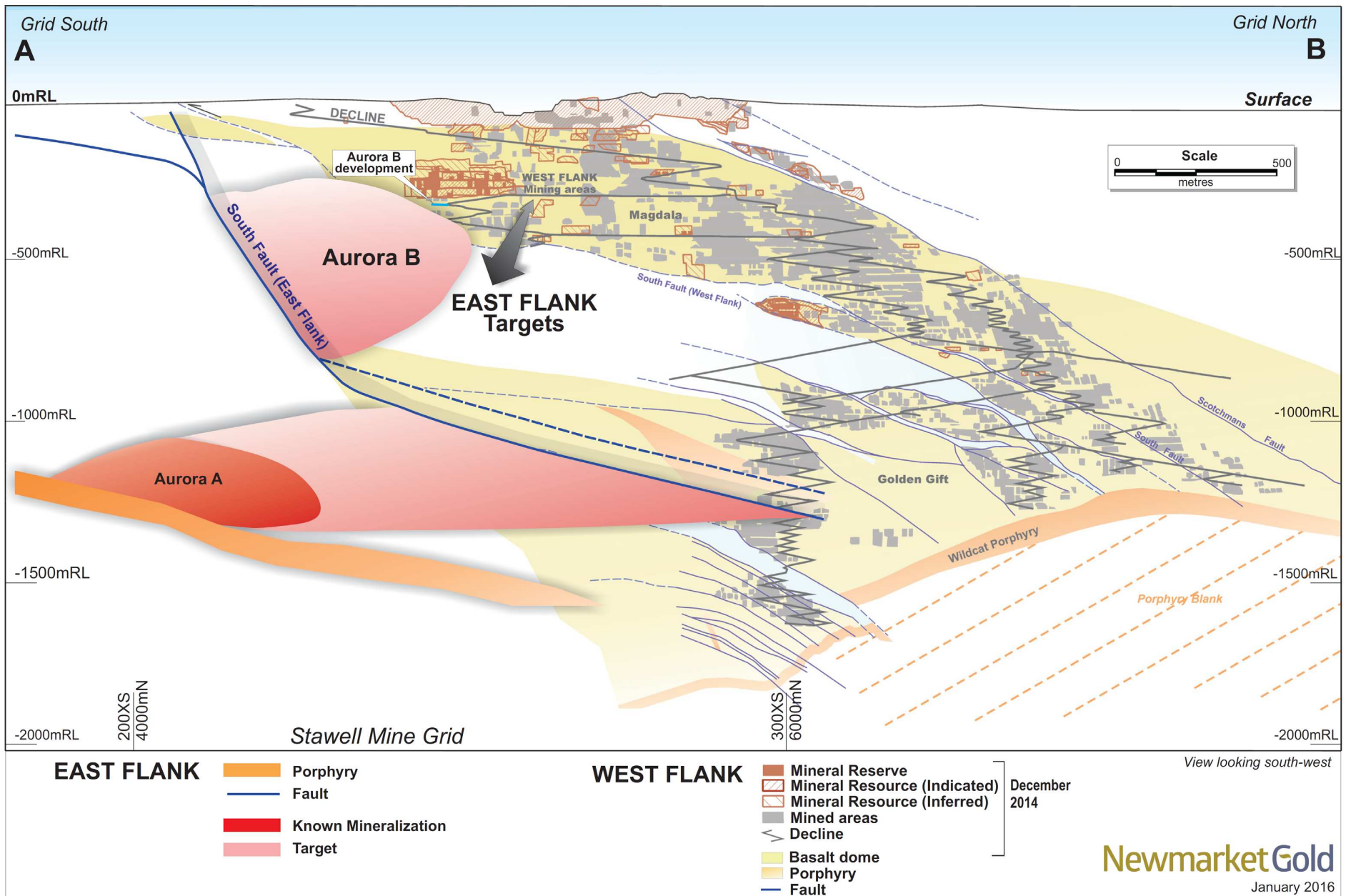


Figure 3 : Stawell Mine Longitudinal projection showing Aurora Targets and Development

Table 1: Drill Assay Intercepts for Aurora B Underground Drilling Programs, Stawell Gold Mine.
(Intercepts reported are outside of the December 31 2014 Indicated Mineral Resources)

Hole ID	From (m)	To (m)	Downhole Interval (m)	Estimated True Width (m)	Gold Grade (g/t Au)	Geological Structure
MD6353 ⁽²⁾	223.70	228.90	5.20	4.80	1.16	Moray Lode
And	344.40	345.80	1.40	1.20	1.54	Waterloo
And	383.80	385.60	1.80	1.60	2.74	Waterloo
And	410.80	411.70	0.90	0.50	7.27	Hampshire Lode
MD6363 ⁽¹⁾	274.10	274.50	0.40	0.30	5.55	Waterloo
And	312.50	313.90	1.40	1.20	2.09	Hampshire Lode
MD6364	189.70	194.40	4.70	3.50	0.96	Waterloo
And	220.40	221.30	0.90	0.70	1.48	Waterloo
And	259.50	269.40	9.90	8.70	3.04	Hampshire Lode
And	285.70	287.00	1.30	1.15	2.08	Hampshire Lode
MD6365	Results Pending					Waterloo
MD6366	312.40	315.20	2.80	1.80	5.69	Hampshire Lode
And ⁽¹⁾	326.70	328.00	1.30	0.65	16.80	Hampshire Lode
MD6367	253.50	256.30	2.80	1.70	0.81	Waterloo
And ⁽¹⁾	374.20	381.90	7.70	4.90	4.01	Hampshire Lode
Including ⁽¹⁾	374.20	374.50	0.30	0.20	23.60	Hampshire Lode
Including ⁽¹⁾	375.90	376.40	0.50	0.30	11.80	Hampshire Lode
Including ⁽¹⁾	380.90	381.50	0.60	0.40	17.05	Hampshire Lode
And	423.50	425.40	1.90	1.20	1.36	Hampshire Lode
MD6368	364.40	365.40	1.00	0.80	6.51	Hampshire Lode
And	369.10	371.30	2.20	1.80	2.80	Hampshire Lode
And ⁽¹⁾	383.70	384.70	1.00	0.80	4.34	Hampshire Lode
And	389.00	391.20	2.20	1.80	2.80	Hampshire Lode
MD6369 ⁽³⁾	Hole Abandoned, No significant Intercept					
MD6369A ⁽³⁾	Hole abandoned, No Significant Intercept					
MD6370	Results Pending					
MD6371	Results Pending					
MD6372	Results Pending					
MD6373	Results Pending					
MD6374	Results Pending					

Notes: (1) - Visible gold observed in drill intercept

(2) – Aurora B Phase 2 drill hole; all other holes are from Aurora B Phase 3 drilling program

Bold number represents intercepts greater than 10 gram metres (true width time gold grade)

Drilling and Assay QAQC

Newmarket Gold has in place quality-control systems to ensure best practice in drilling, sampling and analysis of drill core. All diamond drill hole collars (Table 2) are accurately surveyed using a Leica Total Stations instrument and down hole deviations are measured by an electronic multi-shot camera.

All reported drill intercepts are from NQ2 sized diamond drill core that cut longitudinally in half with a diamond saw; one-half of the drill-core was sent for assay and the other half retained for reference. Drill core sample intervals vary between 0.2 and 1.5m in length and were determined from logging of sulphide and visible gold. Where recognized in drill core all visible gold zones have been noted in the tables reported above.

Gold assay grades are based on a 30-gram charge fire assay. Mean grades are calculated using a variable lower grade cut-off (generally 2 g/t Au) and maximum contiguous 2m internal dilution. No upper gold grade cut has been applied to the data. However, during future resource work the requirement for assay top cutting will be assessed.

Drill samples were assayed at ALS Laboratories Pty Ltd, an independent laboratory located in Orange, New South Wales.

Table 2: Aurora B Exploration Underground Drill Hole Collar Locations, Stawell Gold Mine
(Drilling programs later than and outside of the reporting of the December 2014 Indicated Mineral Resources, Stawell Mine Grid)

Hole ID	Northing	Easting	Elevation	Collar Azimuth	Collar Dip	Depth (m)
MD6353 ⁽²⁾	4,768	4,770	-118	51.9	-47.3	515.8
MD6363	4,872	4,911	-339	75.4	-29.8	377.3
MD6364	4,876	4,929	-339	67.4	-27.0	327.1
MD6365	4,872	4,911	-339	83.6	-27.6	401.6
MD6366	4,875	4,929	-339	66.4	-36.9	378.0
MD6367	4,872	4,911	-339	78.3	-35.9	512.5
MD6368	4,875	4,929	-339	59.4	-44.9	447.2
MD6369 ⁽³⁾	4,872	4,911	-339	74.8	-25.8	210.2
MD6369A ⁽³⁾	4,872	4,911	-339	81.2	-25.2	137.6
MD6370	4,875	4,929	-339	62.1	-40.0	437.4
MD6371	4,872	4,911	-339	71.1	-16.7	326.8
MD6372	4,876	4,928	-339	69.4	-37.4	456.2
MD6373	4,872	4,911	-340	80.1	-20.0	344.8
MD6374	4,876	4,928	-339	78.5	-31.8	411.0

Notes: (2) – Aurora B Phase 2 drill hole; all others are Phase 3.

(3) – Abandoned drill hole that did not reach the Aurora B Target.