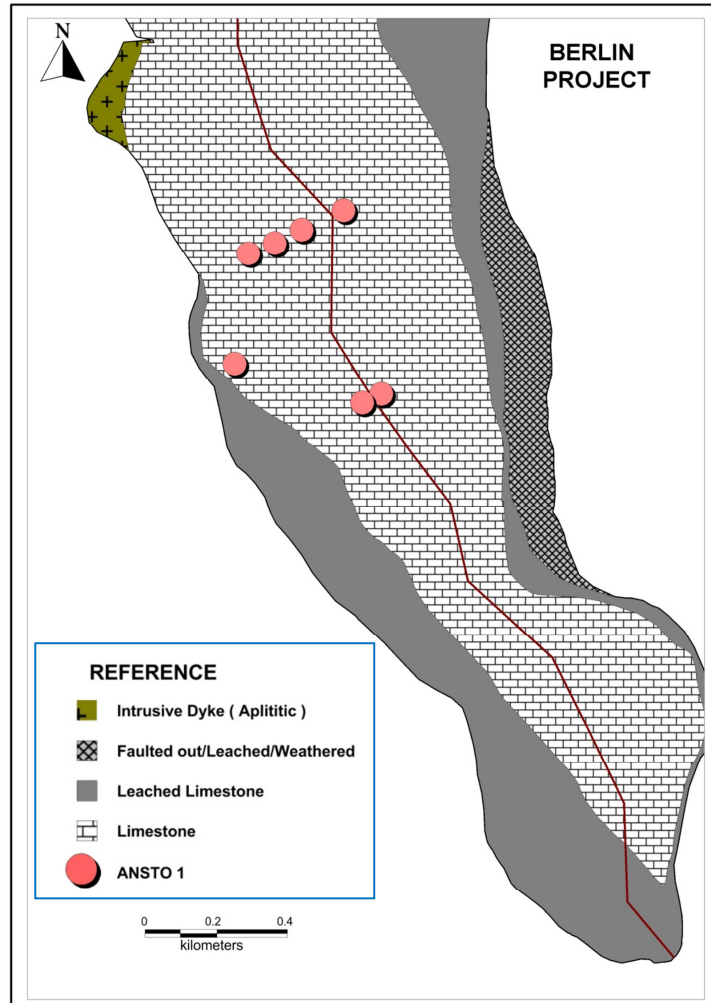


Figure 2 – Map of the “Unfolded” Mineralized Layer in the Southern Part of the Berlin Project



Map depicts the mineralized layer in the southern part of the Berlin Project “unfolded” into a flat sheet. Each pink circle marks the pierce point at which a bore hole intersected the mineralized sheet from which samples were used in the metallurgical testing using acetic acid leach reported in this press release.