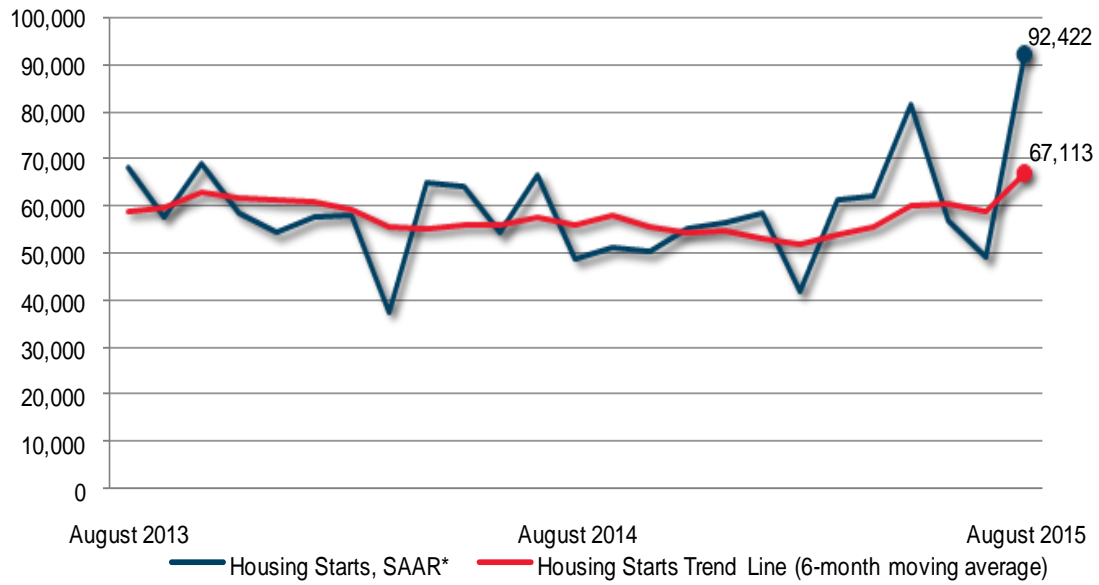


Provincial Housing Starts - Urban Areas



Preliminary Housing Start Data August 2015		
Ontario	July 2015	August 2015
<i>Trend</i> ¹ , urban centres ²	58,700	67,113
SAAR, urban centres ²	48,903	92,422
	August 2014	August 2015
Actual, urban centres ²		
August - Single-detached	2,137	2,377
August - Multiples	2,504	5,970
August - Total	4,641	8,347
January to August - Single-detached	13,659	14,103
January to August - Multiples	23,946	28,216
January to August - Total	37,605	42,319

Source: CMHC

¹The trend is a six-month moving average of the monthly seasonally adjusted annual rates (SAAR).

²Urban centres with a population of 10,000 and over.

Detailed data available upon request