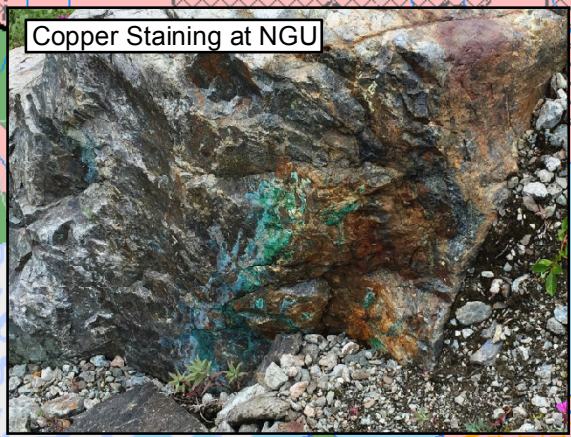




Colorado Resources Ltd.
KSP: Pins Target
 News Release: 15-06

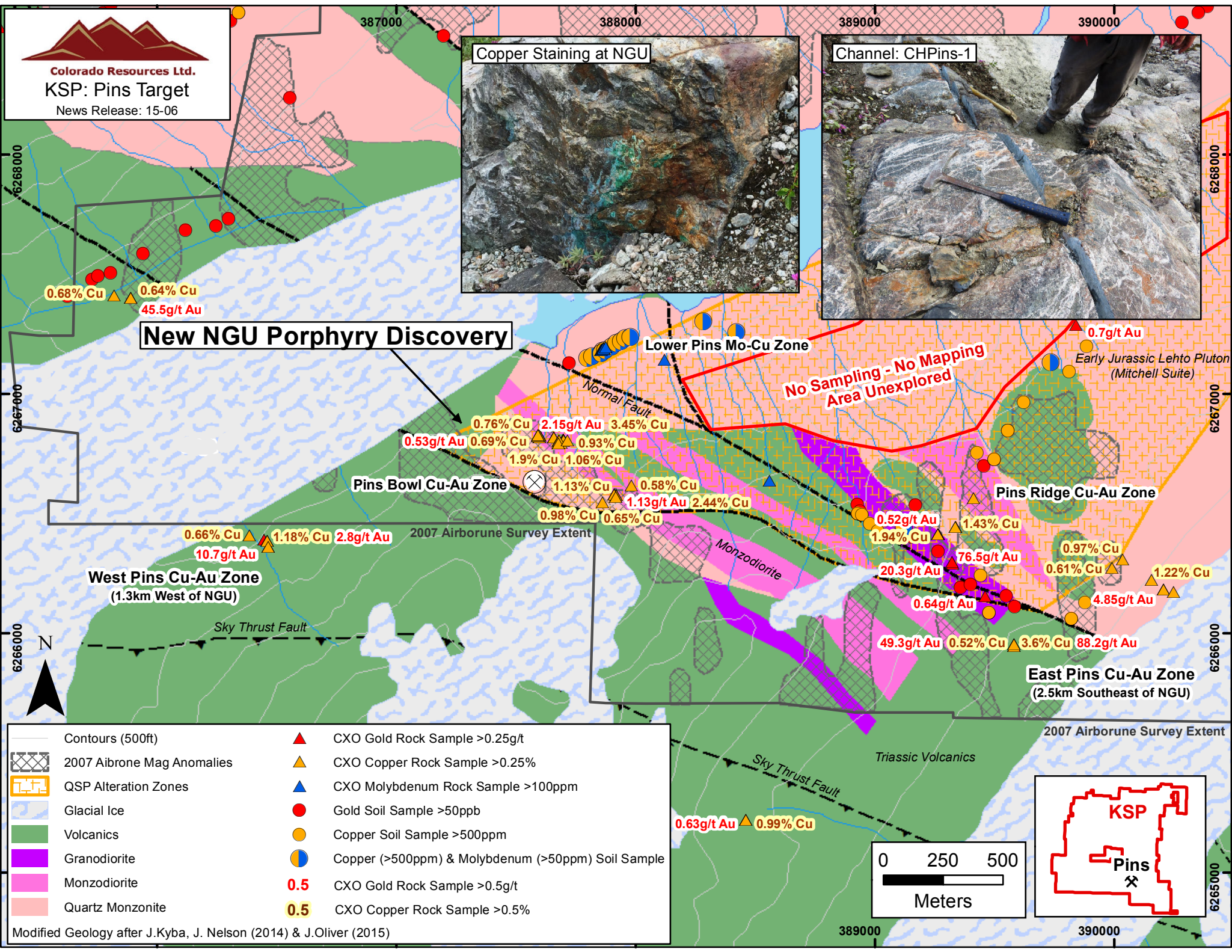


Copper Staining at NGU



Channel: CHPins-1

New NGU Porphyry Discovery



**No Sampling - No Mapping
 Area Unexplored**

- | | |
|-----------------------------|--|
| Contours (500ft) | CXO Gold Rock Sample >0.25g/t |
| 2007 Airborne Mag Anomalies | CXO Copper Rock Sample >0.25% |
| QSP Alteration Zones | CXO Molybdenum Rock Sample >100ppm |
| Glacial Ice | Gold Soil Sample >50ppb |
| Volcanics | Copper Soil Sample >500ppm |
| Granodiorite | Copper (>500ppm) & Molybdenum (>50ppm) Soil Sample |
| Monzodiorite | 0.5 CXO Gold Rock Sample >0.5g/t |
| Quartz Monzonite | 0.5 CXO Copper Rock Sample >0.5% |

Modified Geology after J.Kyba, J. Nelson (2014) & J.Oliver (2015)

