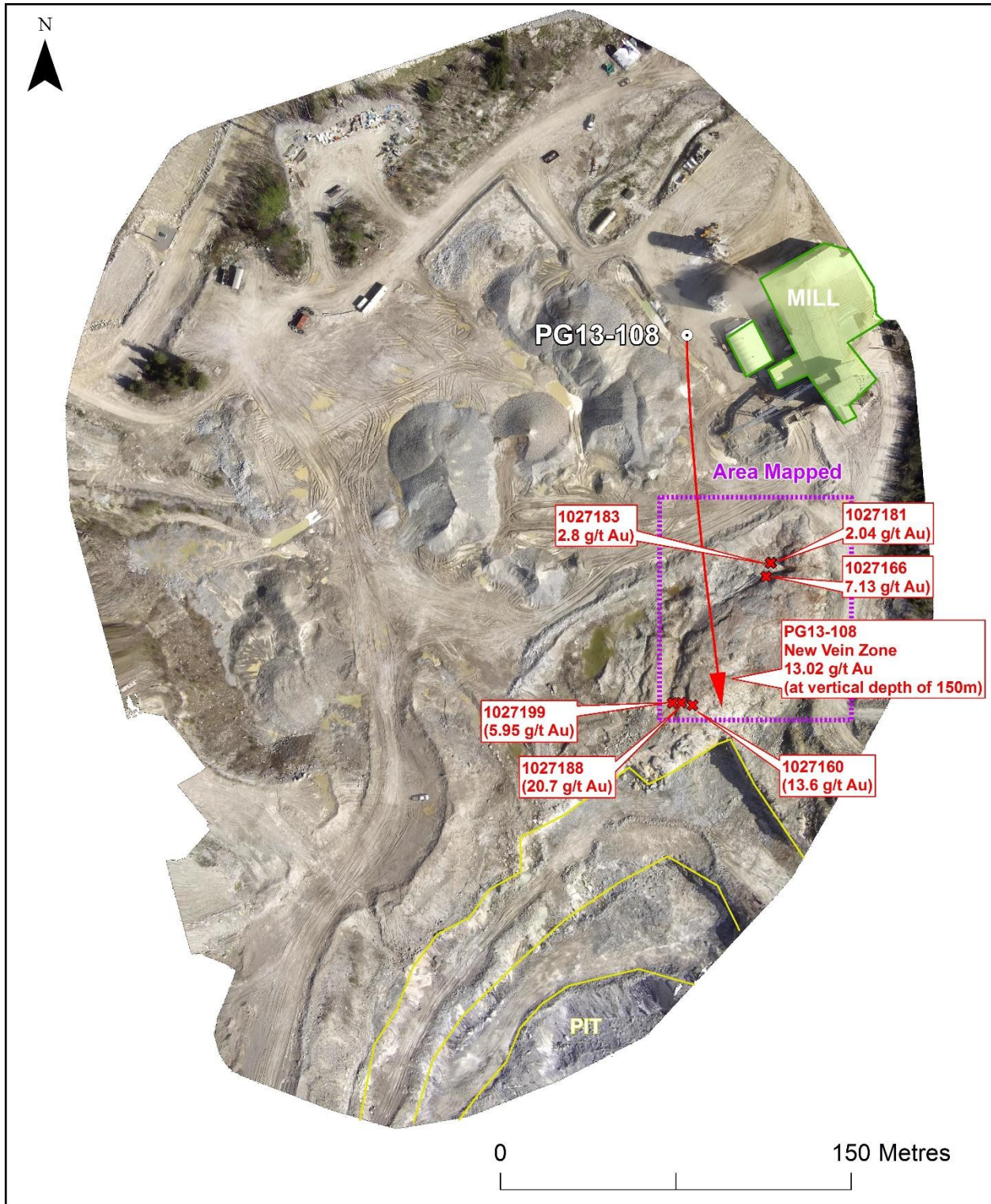


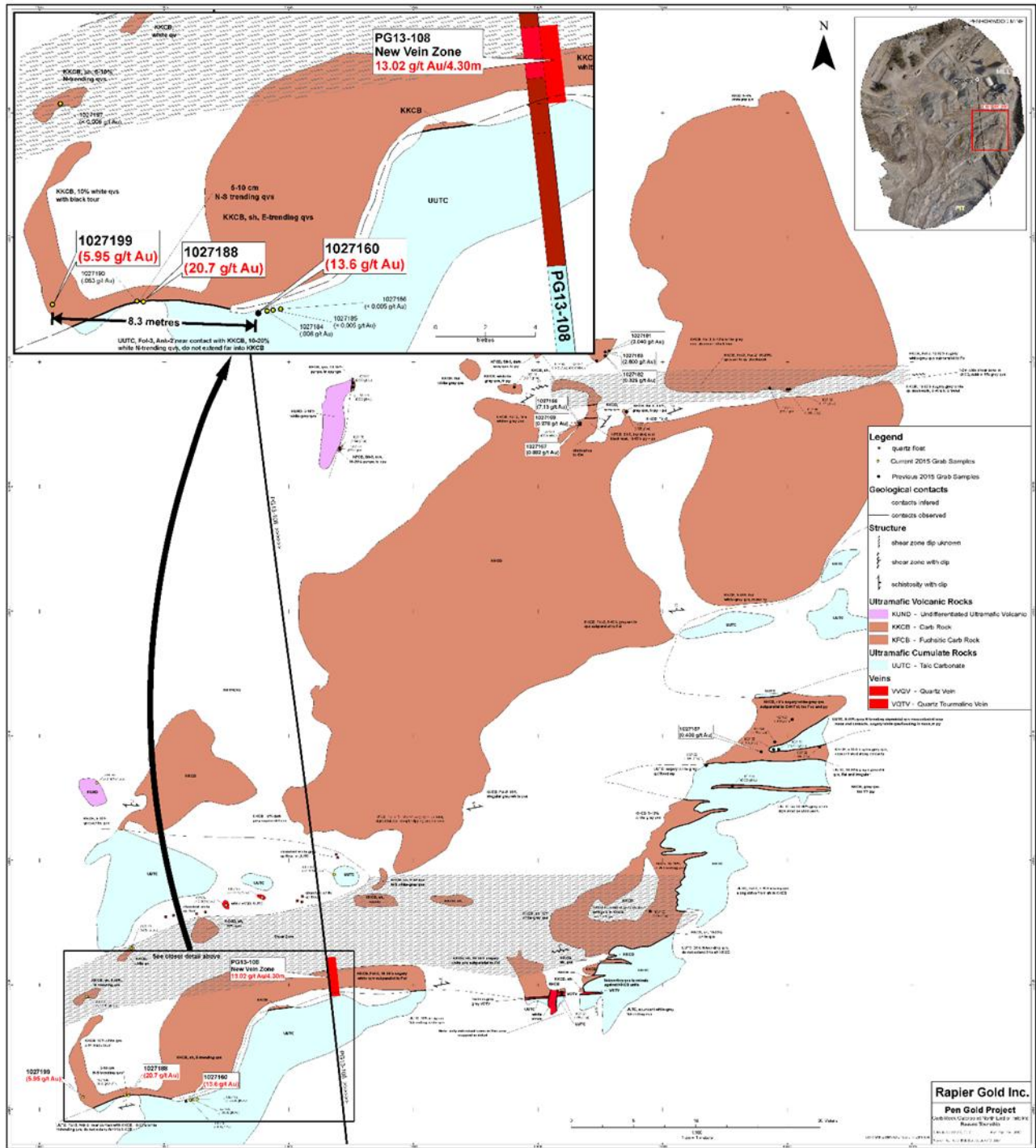
# Appendix A

## Location of Fox Outcrop in relation to the mill and talc mine pit



# Appendix B

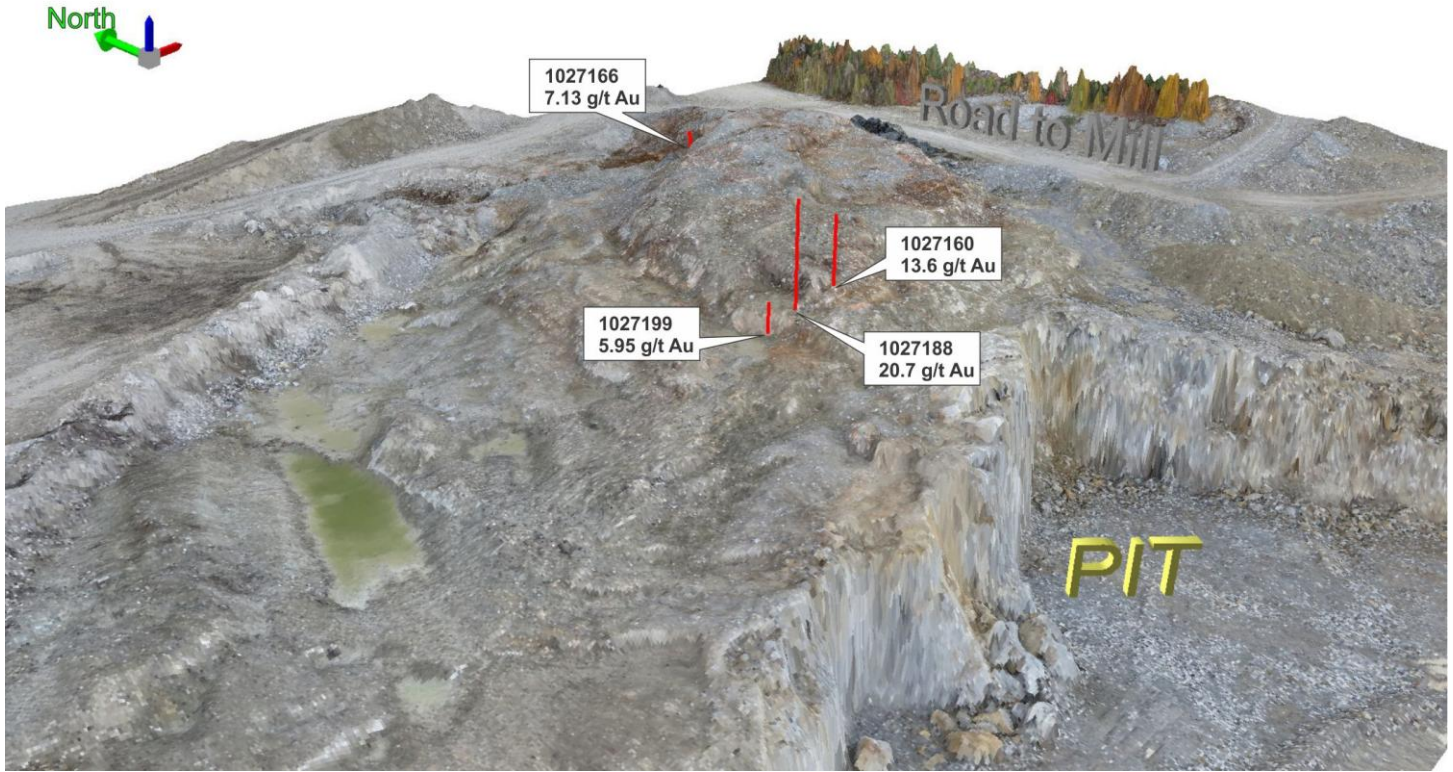
## Detailed map





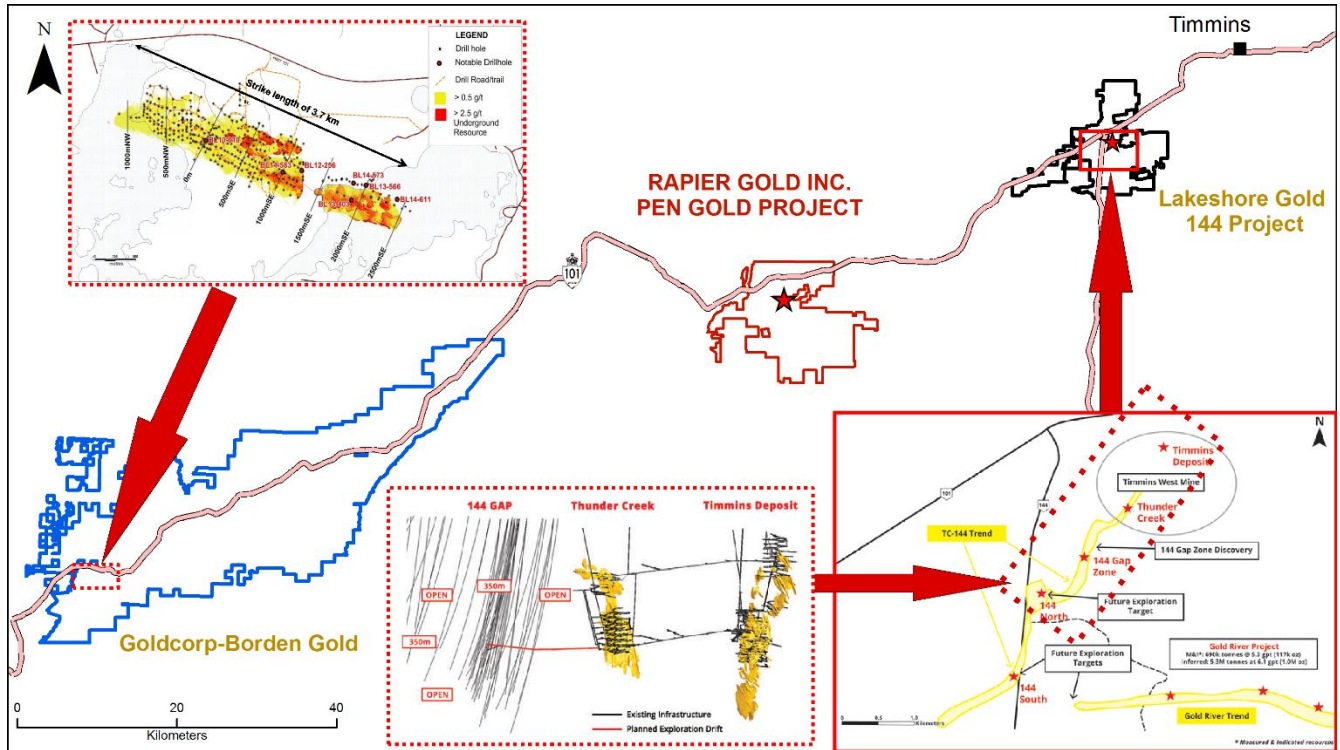
## Appendix C

### 3 D image of Fox Outcrop



Appendix D.

Location of Pen Gold Project between Lake Shore Gold's 144 Project and Goldcorp's Borden Project



Images sourced from Lake Shore Gold Corp's 2014 Annual Report and Probe Mines corporate presentation.