

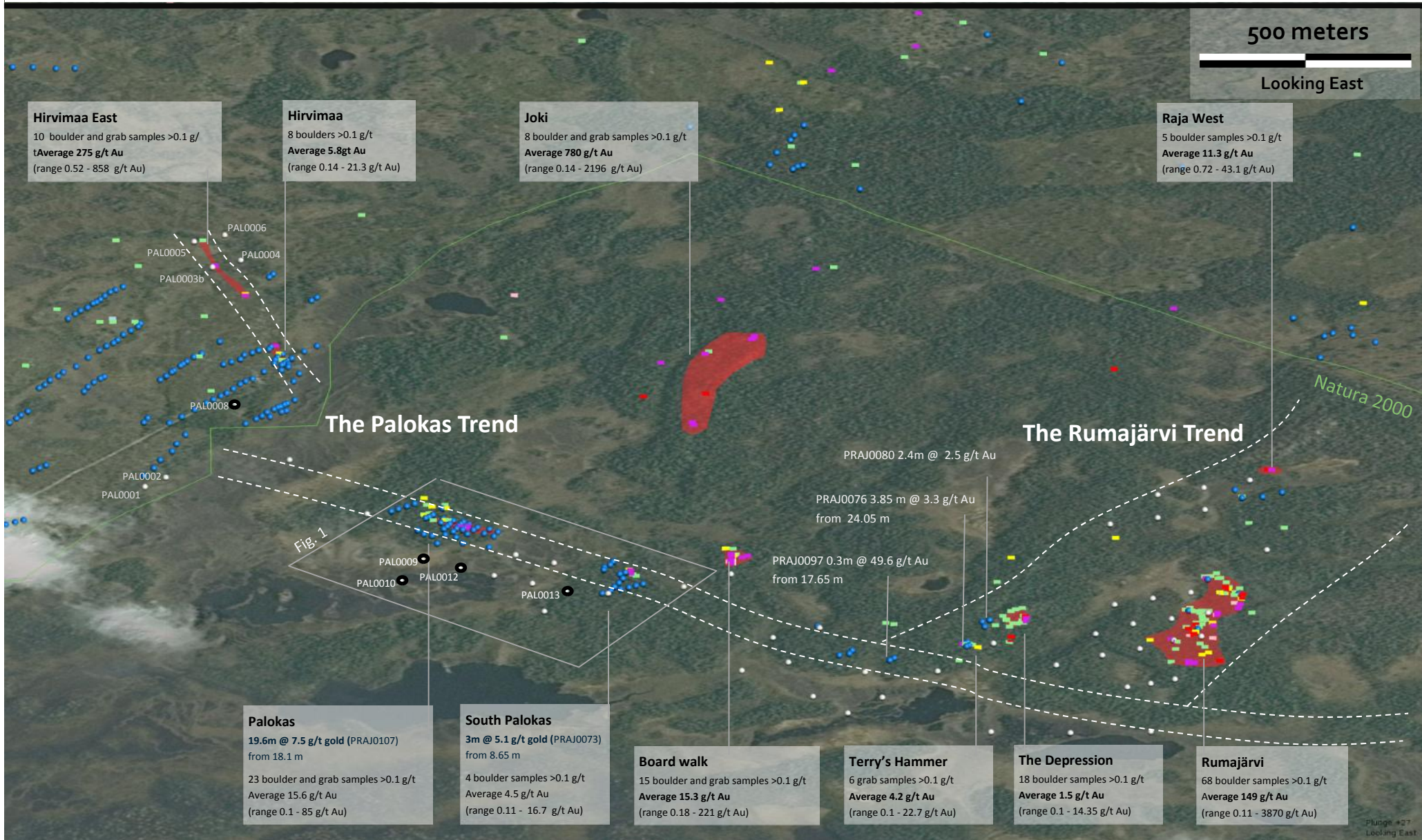
Figure 5. Overview of the Rajapalot Gold Project

Legend

- Shallow Drilling (PRAJ/LD)
average 18m depth
- Planned drill hole 2016
- Energold drill hole
- Boulder field
- Boulder Results
 - < 1 g/t
 - < 3 g/t
 - < 5 g/t
 - < 10 g/t
 - < 25 g/t
 - > 25 g/t

500 meters

Looking East



Hirvima East
10 boulder and grab samples >0.1 g/t
Average 275 g/t Au
(range 0.52 - 858 g/t Au)

Hirvima
8 boulders >0.1 g/t
Average 5.8gt Au
(range 0.14 - 21.3 g/t Au)

Joki
8 boulder and grab samples >0.1 g/t
Average 780 g/t Au
(range 0.14 - 2196 g/t Au)

Raja West
5 boulder samples >0.1 g/t
Average 11.3 g/t Au
(range 0.72 - 43.1 g/t Au)

The Palokas Trend

The Rumajärvi Trend

Natura 2000

PRAJ0080 2.4m @ 2.5 g/t Au

PRAJ0076 3.85 m @ 3.3 g/t Au
from 24.05 m

PRAJ0097 0.3m @ 49.6 g/t Au
from 17.65 m

Fig. 1

Palokas
19.6m @ 7.5 g/t gold (PRAJ0107)
from 18.1 m
23 boulder and grab samples >0.1 g/t
Average 15.6 g/t Au
(range 0.1 - 85 g/t Au)

South Palokas
3m @ 5.1 g/t gold (PRAJ0073)
from 8.65 m
4 boulder samples >0.1 g/t
Average 4.5 g/t Au
(range 0.11 - 16.7 g/t Au)

Board walk
15 boulder and grab samples >0.1 g/t
Average 15.3 g/t Au
(range 0.18 - 221 g/t Au)

Terry's Hammer
6 grab samples >0.1 g/t
Average 4.2 g/t Au
(range 0.1 - 22.7 g/t Au)

The Depression
18 boulder samples >0.1 g/t
Average 1.5 g/t Au
(range 0.1 - 14.35 g/t Au)

Rumajärvi
68 boulder samples >0.1 g/t
Average 149 g/t Au
(range 0.11 - 3870 g/t Au)