

Figure 1. Plan view showing the interpreted extents of all mineralised lenses at the Caribou Dome Project, together with the traces of all previous drilling, the majority of which focused on Lenses 4, 5 and 6.

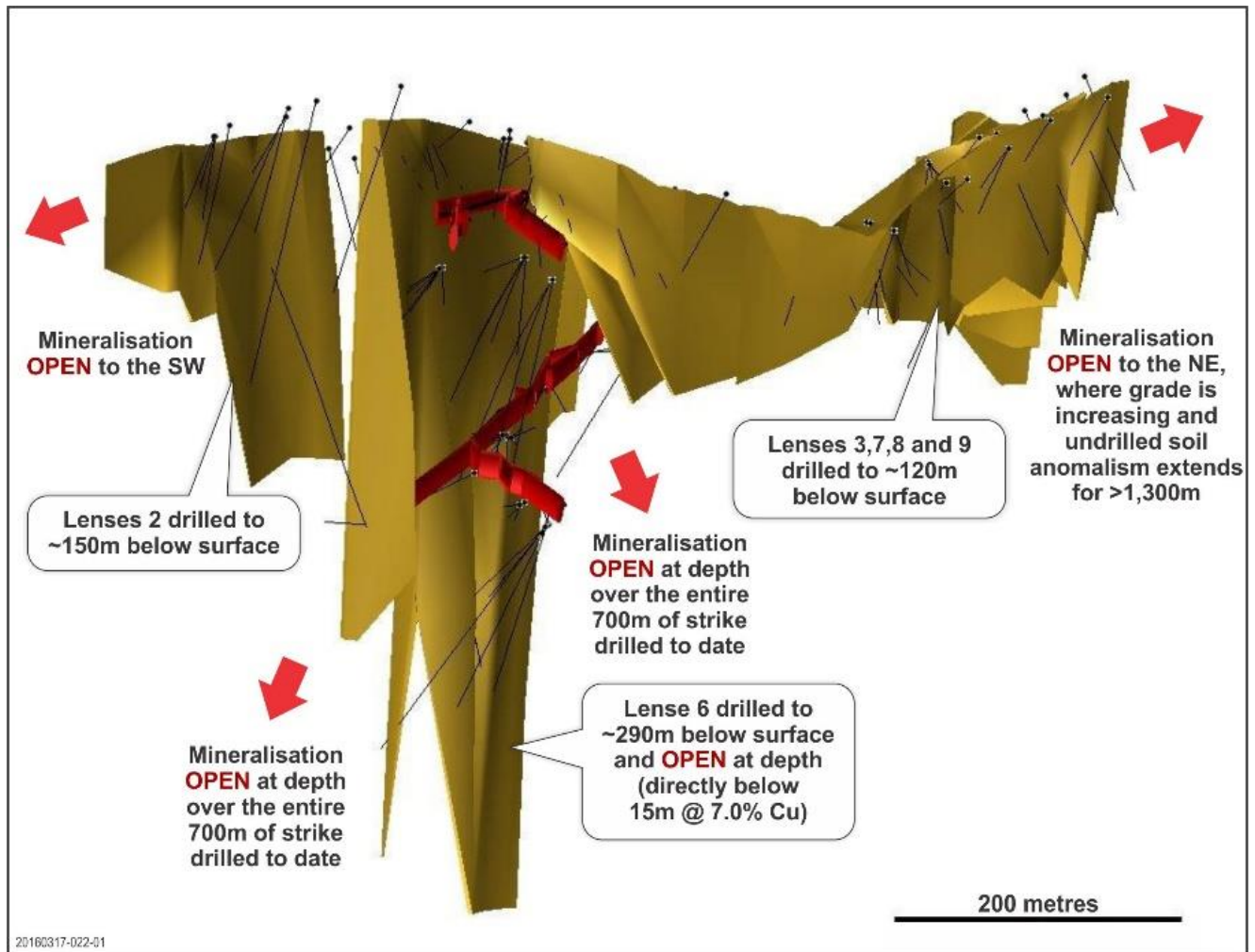


Figure 2. Longitudinal view showing the interpreted extents of the mineralised lenses at the Caribou Dome Project, together with the traces of all previous drilling, the majority of which focused on Lenses 4, 5 and 6.

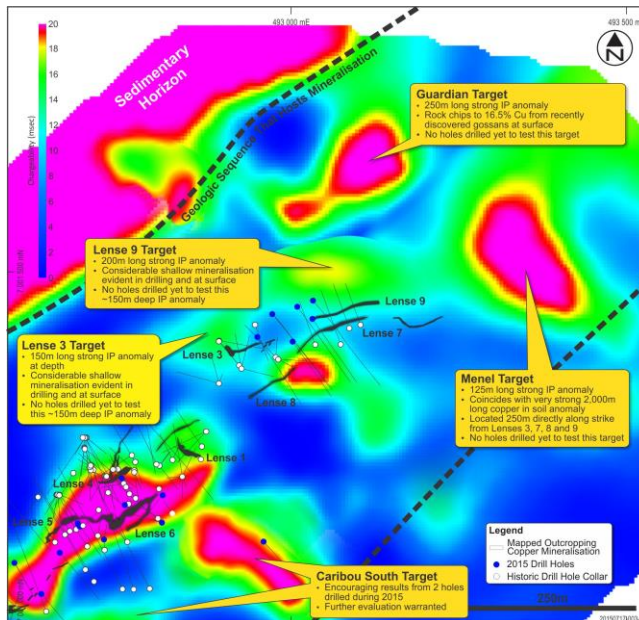


Figure 3. Plan view of 2015 IP data (a composite image of select depth slices) showing anomalous in the northeastern portion of the surveyed area.

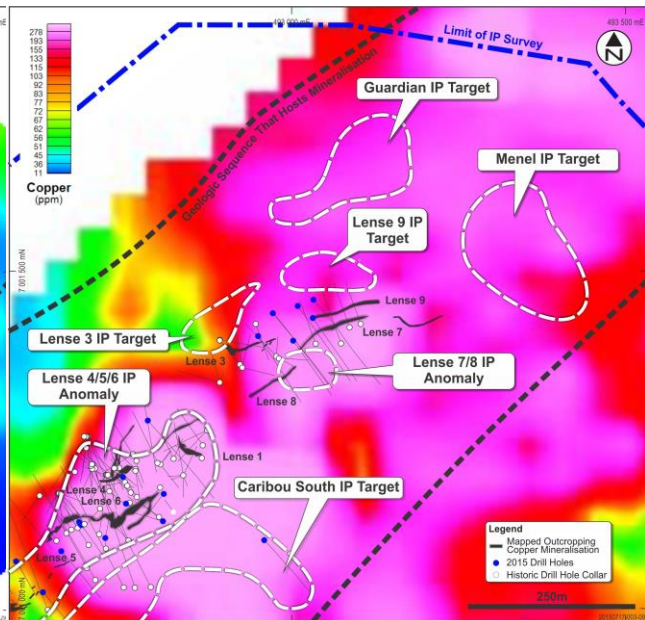


Figure 4. Plan view of 2015 soil geochemistry data showing copper anomaly within the identical area covered by Figure 3, together with approximate locations of significant IP anomalies.

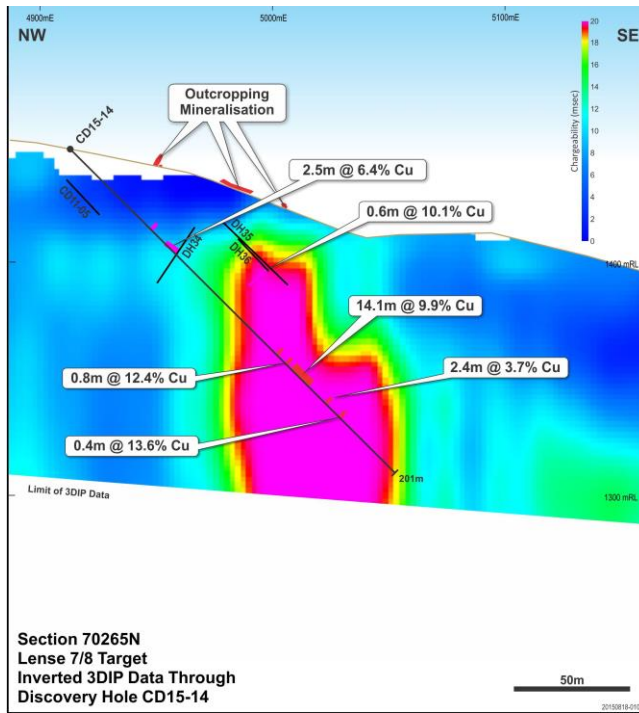


Figure 5. Pseudosection of IP data through the Lense 7/8 Target, together with results from discovery hole CD15-14

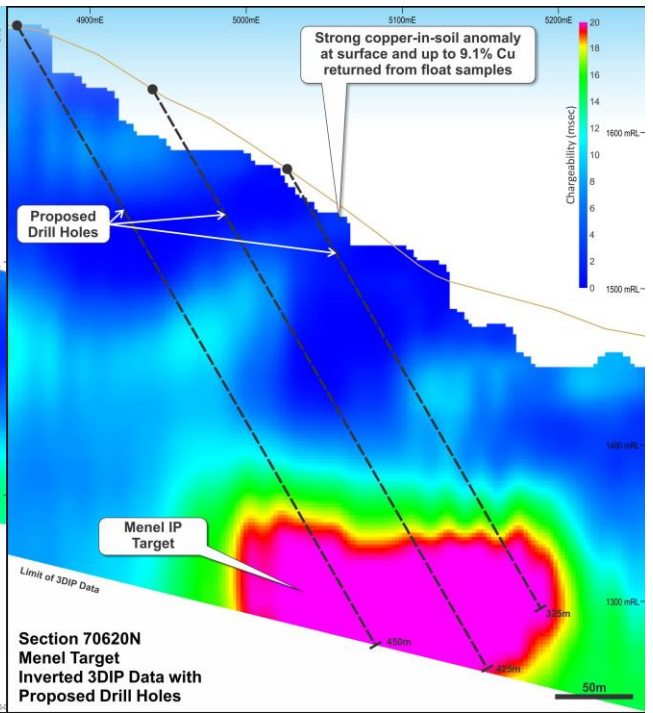


Figure 6. Pseudosection of IP data through the undrilled Menel Target

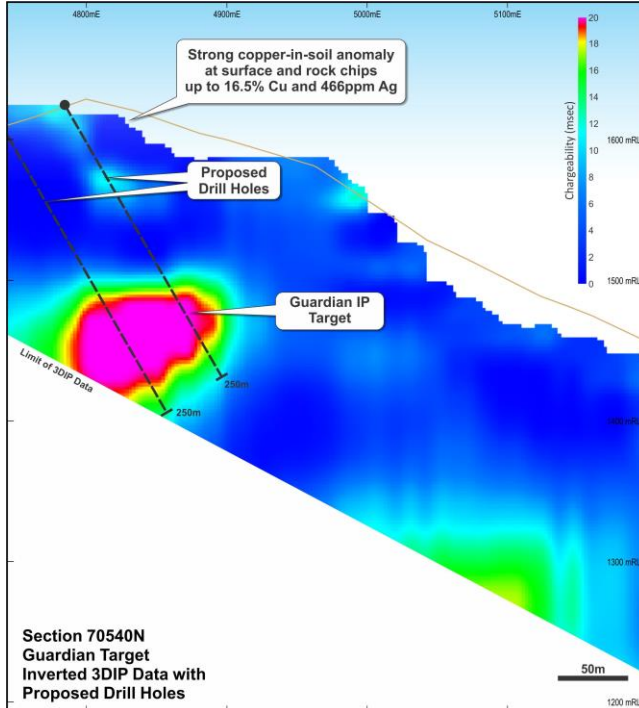


Figure 7. Pseudosection of IP data through the undrilled Guardian Target

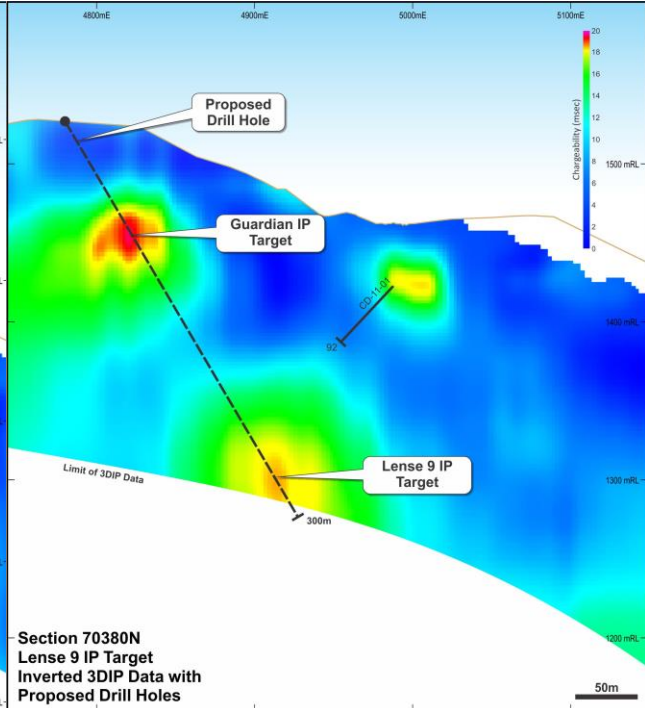


Figure 8. Pseudosection of IP data through the undrilled Lense 9 and Guardian Targets

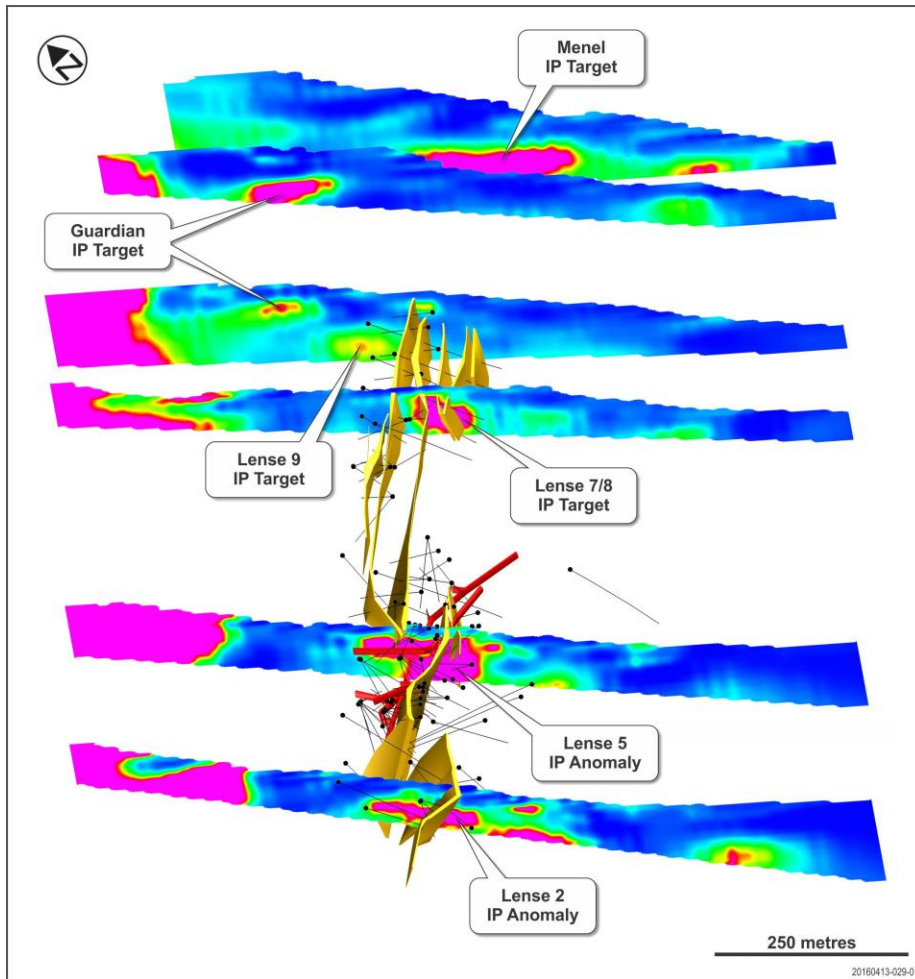


Figure 9. Select IP pseudosections superimposed on known mineralisation at the Caribou Dome Project, looking from above towards the northeast, along the strike of the mineralisation. The undrilled strong Menel, Guardian and Lense 9 IP anomalies are evident in the northeast.

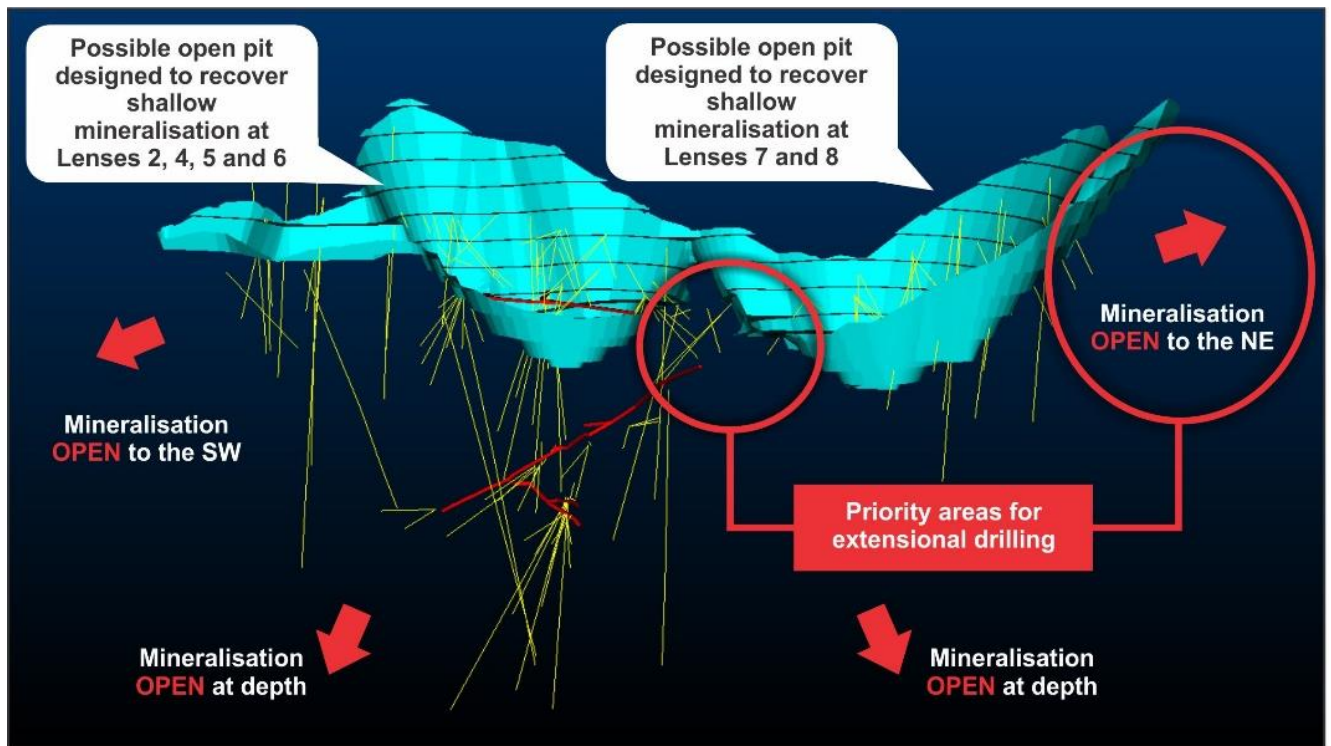


Figure 10. Results from initial open pit mining studies, indicating two adjacent open pits are currently optimal, potentially because very limited drilling has been undertaken previously between Lenses 4, 5 and 6 (LHS) and Lenses 7/8 (RHS). Extensions of mineralisation in this area will be targeted during the Company's next drilling program. Traces of all drill holes are illustrated in yellow. Historic underground exploration development is highlighted in red.

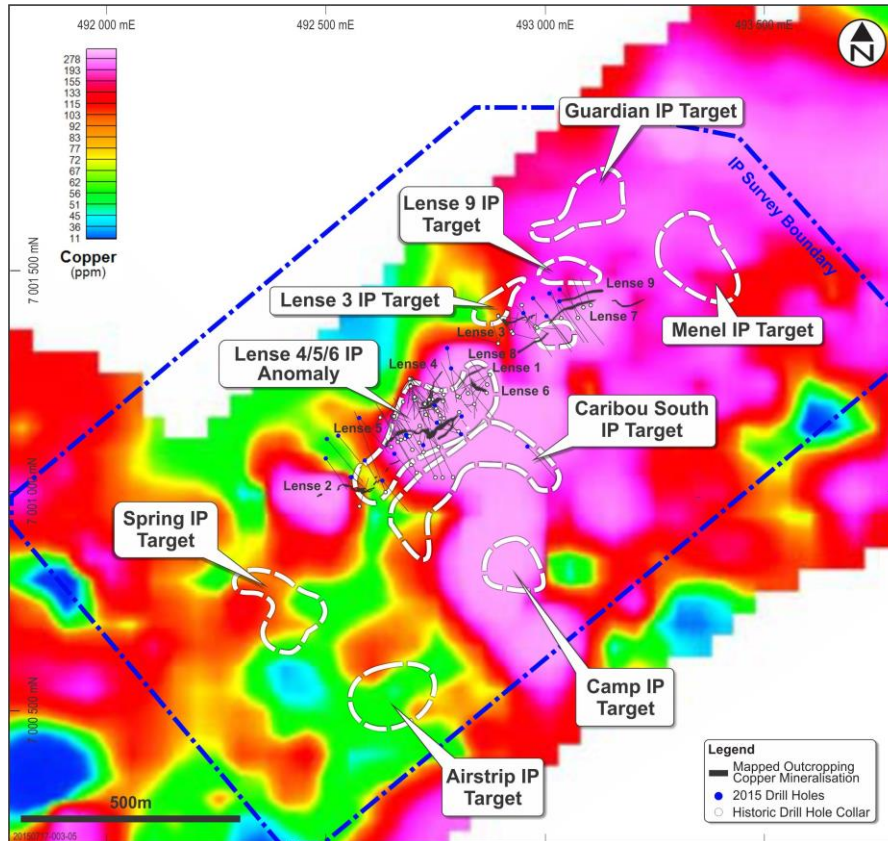


Figure 11. Soil sampling results showing strong copper anomalism over the known mineralisation at the Caribou Dome Project., that extends >1,300m to the northeast and immediately west of Lense 2. Both these areas will be targeted with further drilling.

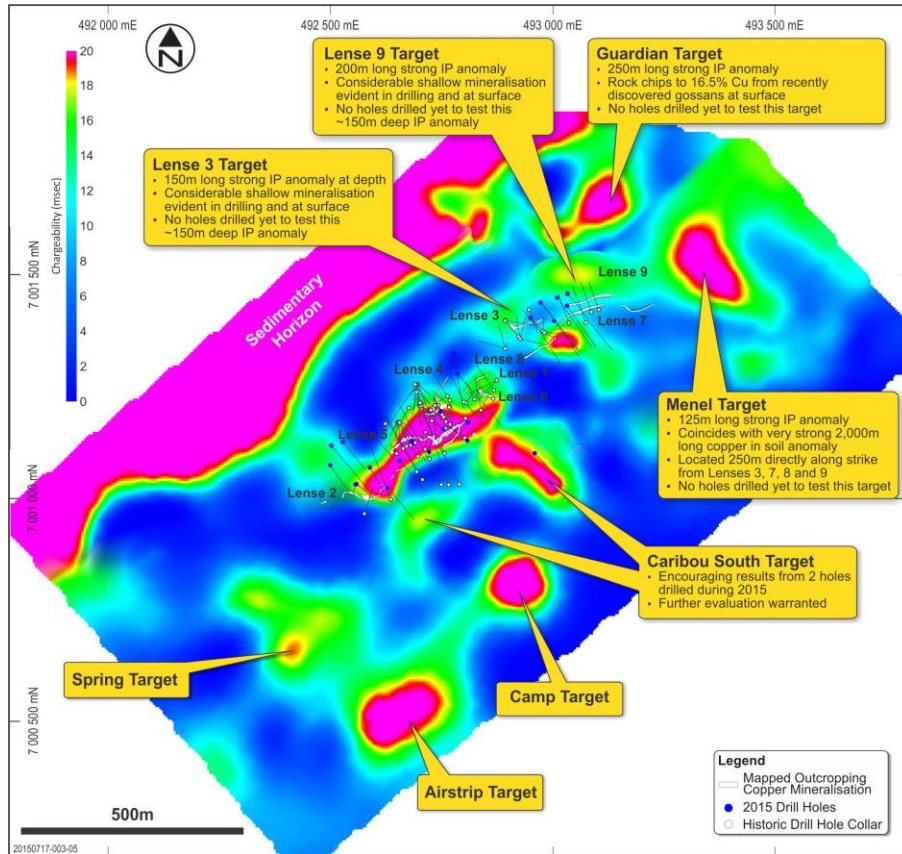


Figure 12. Composite image of depth-inverted IP data showing a close correlation between IP anomalies and mineralisation. Multiple untested IP targets are evident.

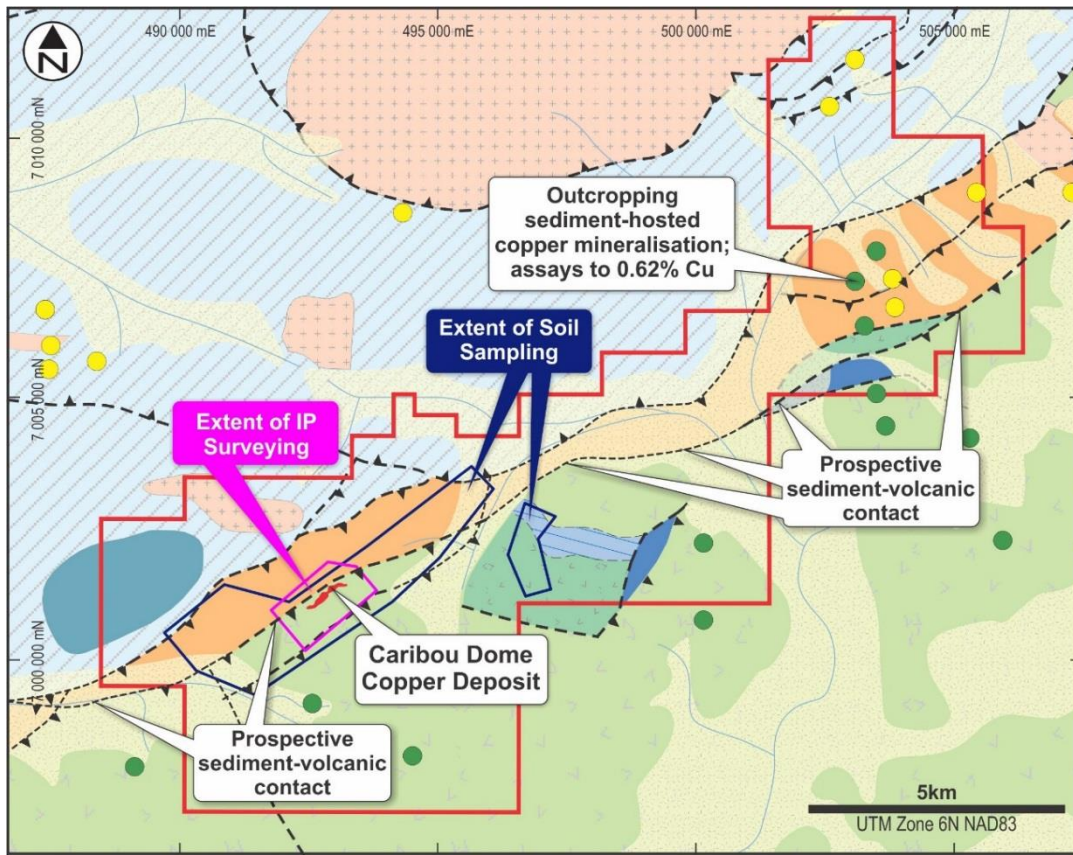


Figure 14. Regional geology of the Caribou Dome Copper Project. The current extents of ground geophysics and soil sampling surveys are illustrated.