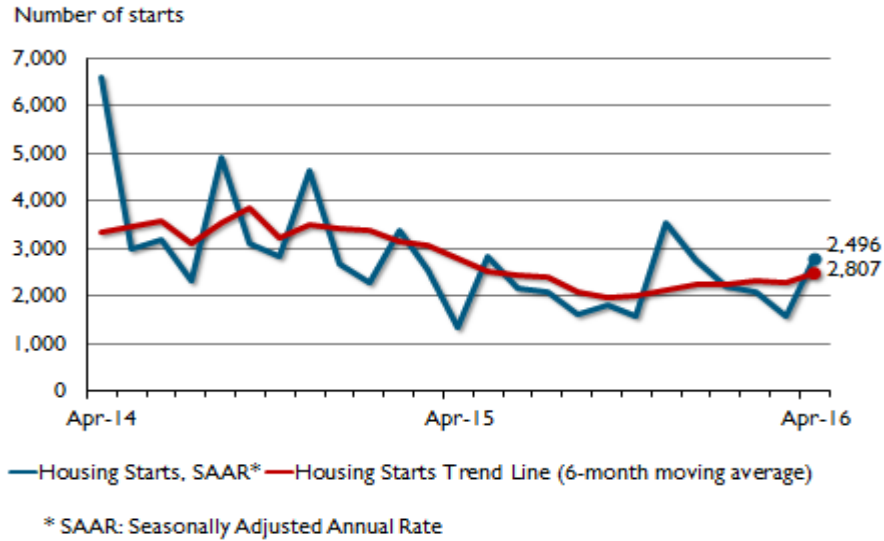


## Saskatoon CMA Housing Starts



Preliminary Housing Start Data April 2016		
Saskatoon CMA <sup>1</sup>	March 2016	April 2016
Trend <sup>2</sup>	2,290	2,496
SAAR	1,596	2,807
	April 2015	April 2016
Actual		
April - Single-detached	97	61
April - Multiples	19	177
April - Total	116	238
January to April - Single-detached	272	262
January to April - Multiples	423	342
January to April - Total	695	604

Source: CMHC

<sup>1</sup>Census Metropolitan Area

<sup>2</sup>The trend is a six-month moving average of the monthly seasonally adjusted annual rates (SAAR). By removing seasonal ups and downs, seasonal adjustment allows for comparison of adjacent months and quarters. The monthly and quarterly SAAR and trend figures indicate the annual level of starts that would be obtained if the same pace of monthly or quarterly construction activity was maintained for 12 months. This facilitates comparison of the current pace of activity to annual forecasts as well as to historical annual levels.

Detailed data available upon request

Saskatchewan Preliminary Actual Housing Starts April / 2015 - 2016							
Urban Centres		Singles		Multiples		Total	
		2015	2016	2015	2016	2015	2016
Centres 100,000+	Regina CMA	66	50	51	38	117	88
	Regina City	52	40	47	38	99	78
	Saskatoon CMA	97	61	19	177	116	238
	Saskatoon City	75	49	19	175	94	224
<b>Centres 10,000+</b>	<b>Total Urban Starts</b>	<b>187</b>	<b>155</b>	<b>103</b>	<b>239</b>	<b>290</b>	<b>394</b>

Saskatchewan Preliminary Actual Housing Starts Year-to-Date / 2015 - 2016							
Urban Centres		Singles		Multiples		Total	
		2015	2016	2015	2016	2015	2016
Centres 100,000+	Regina CMA	147	171	234	152	381	323
	Regina City	126	144	230	152	356	296
	Saskatoon CMA	272	262	423	342	695	604
	Saskatoon City	194	162	413	330	607	492
<b>Centres 10,000+</b>	<b>Total Urban Starts</b>	<b>467</b>	<b>507</b>	<b>726</b>	<b>556</b>	<b>1,193</b>	<b>1,063</b>

Source: Market Analysis Centre, CMHC

Urban starts include an estimate for the areas 10,000-49,999 for the first two months of the quarter and are subject to revision(s) after quarterly enumeration in the third and final month of the quarter.