

Figure 1: Location of Curibaya and Banos del Indio licenses within the southern Peru epithermal and porphyry belts

Concessions and Regional Structures

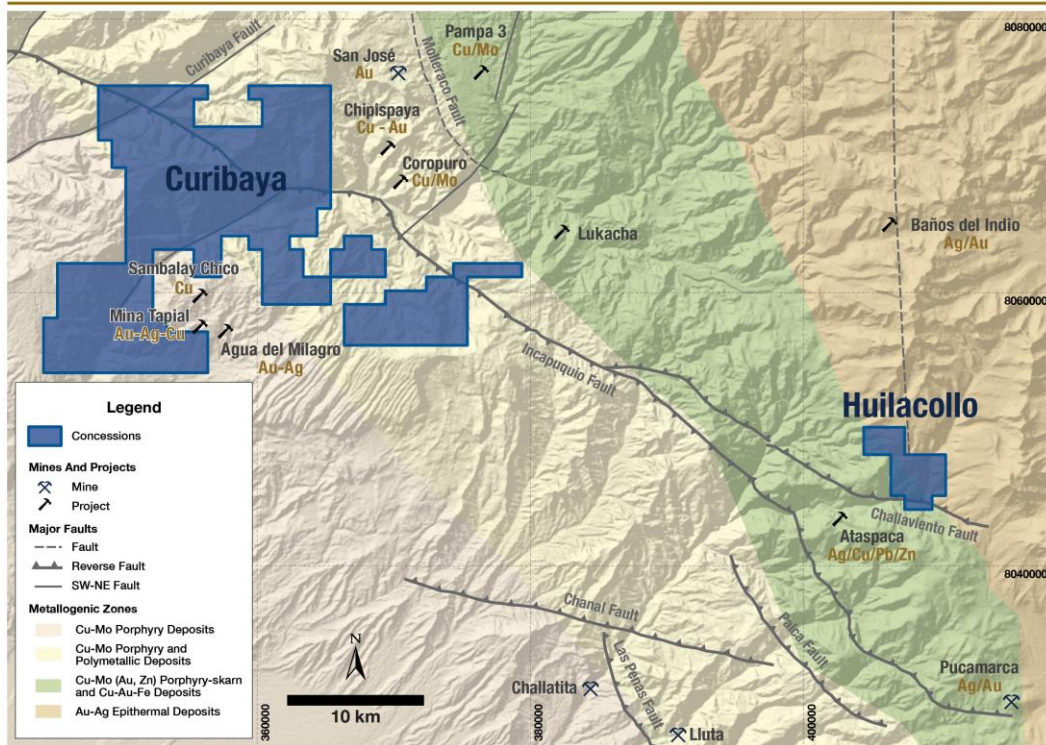


Figure 2: Structural setting of the Curibaya and Huilacollo licenses with highlighted projects in the vicinity

Huilacollo Project: Advanced Au Epithermal Oxide



- Mineralized body is open for expansion – extremely limited drilling to date.
- Resistivity highs/chargeability lows coincident with elevated Au in soil values

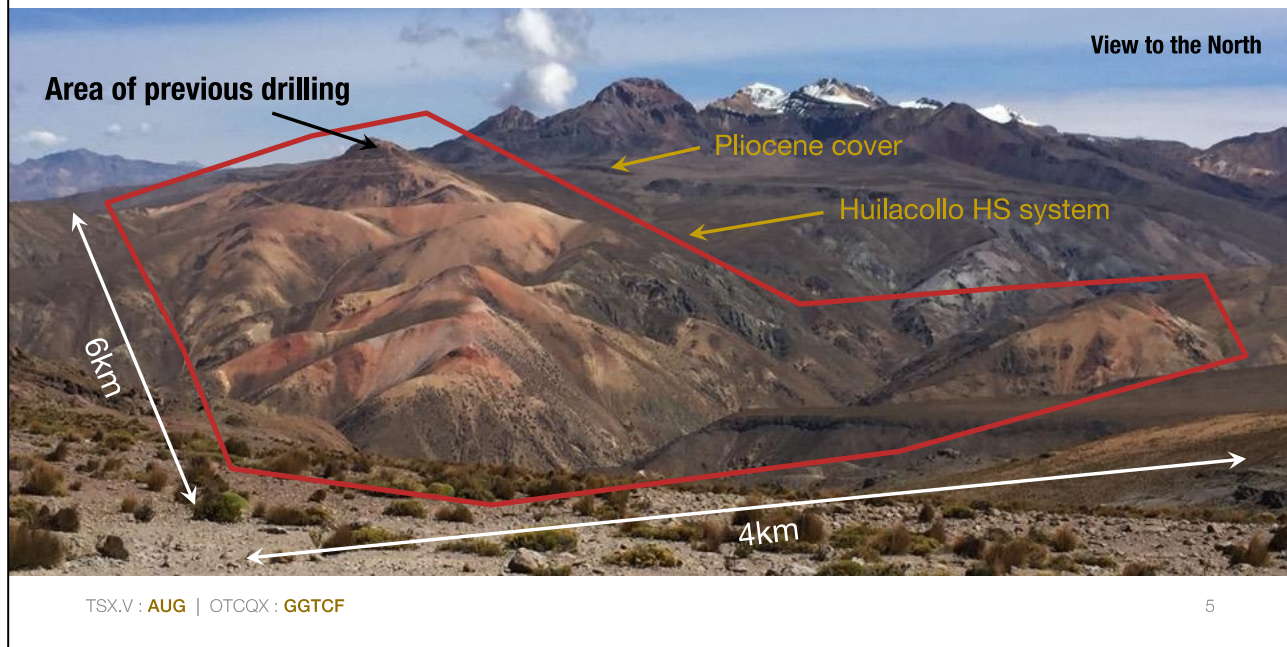


Figure 3: Huilacollo 4 by 6 km high sulphidation alteration system as outlined by the red polygon

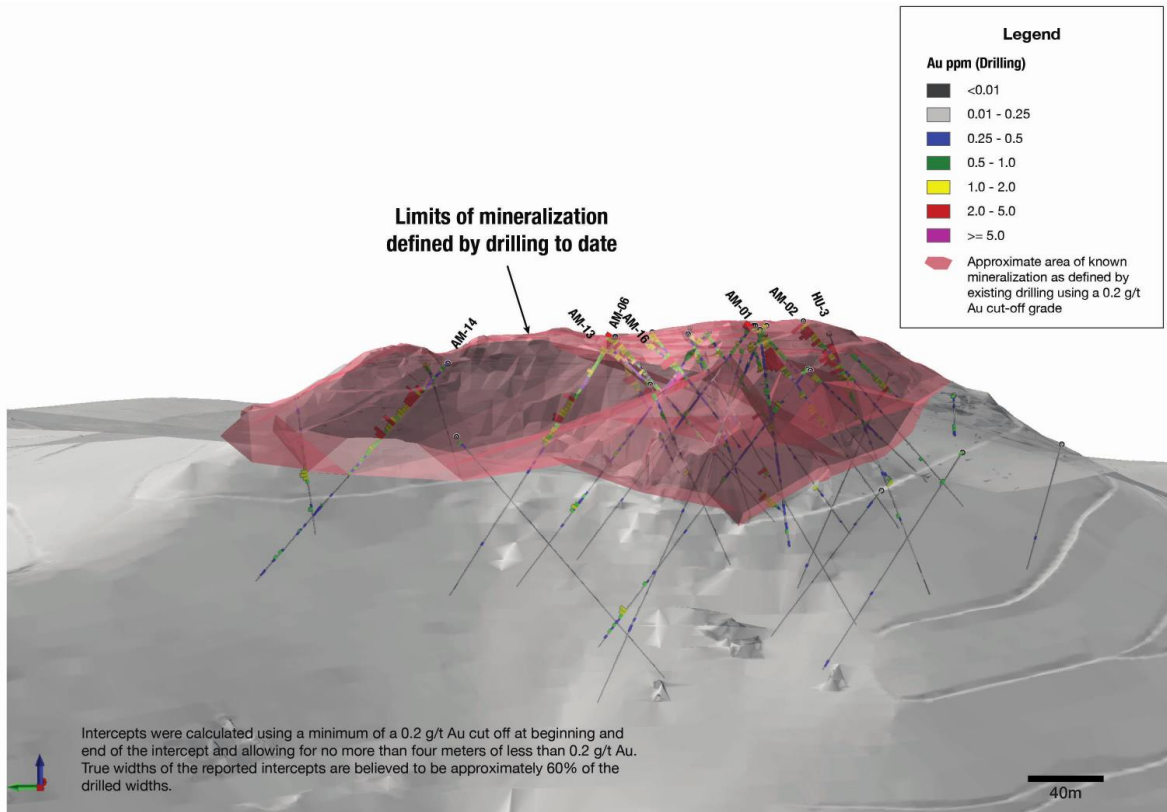


Figure 4: Huilacollo historical drilling highlighted

Huilacollo Oxide Gold Targets



High Resistivity Values Coincident with Chargeability Low

- Strong N-S structural control to alignment of chargeability & resistivity features
- Targeting zones of maximum extension - for high grade

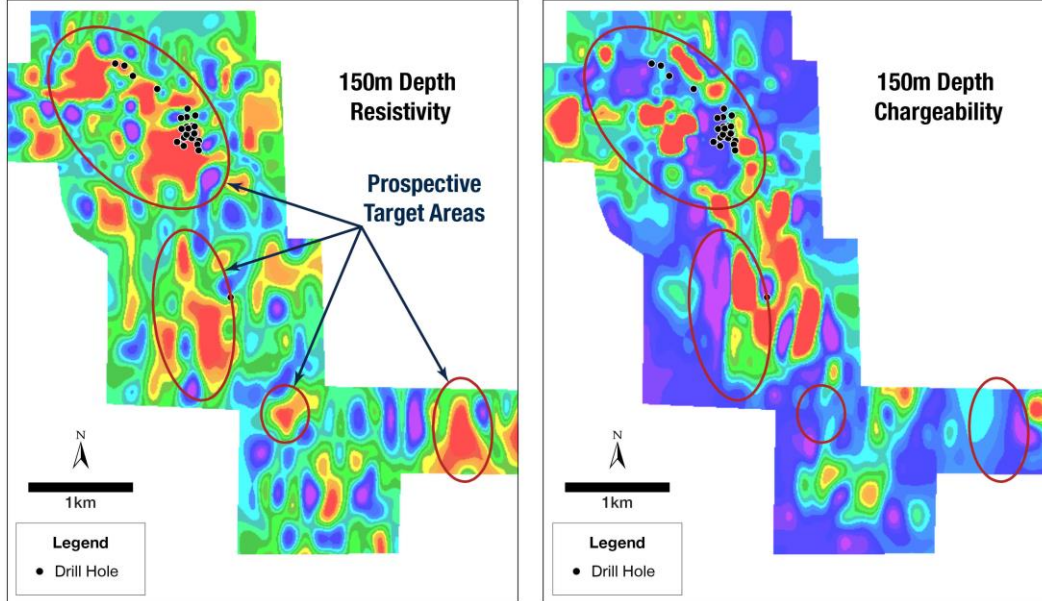


Figure 5: Huilacollo oxide gold targets defined by coincident high resistivity and low chargeability signatures. Note very limited drilling in target areas

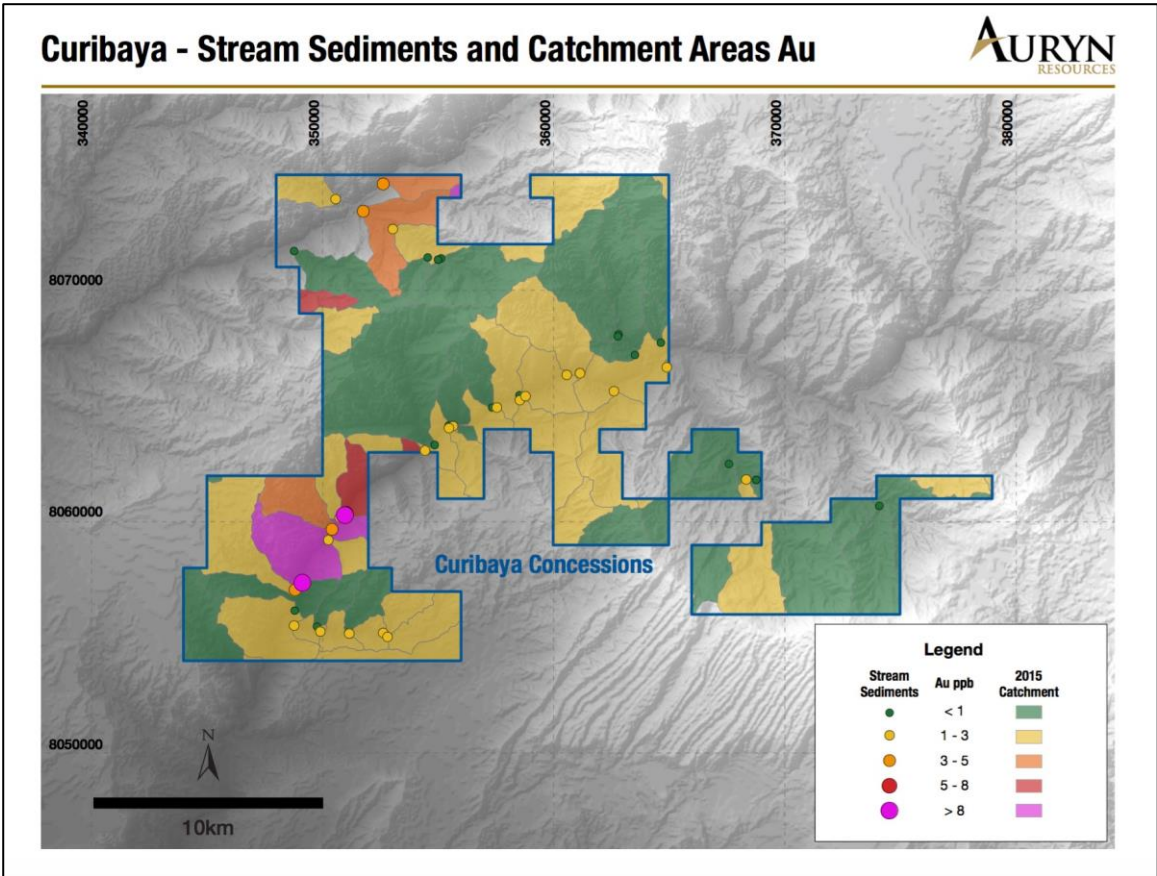


Figure 6: Illustrates anomalous gold bearing drainages within the Curibaya concessions

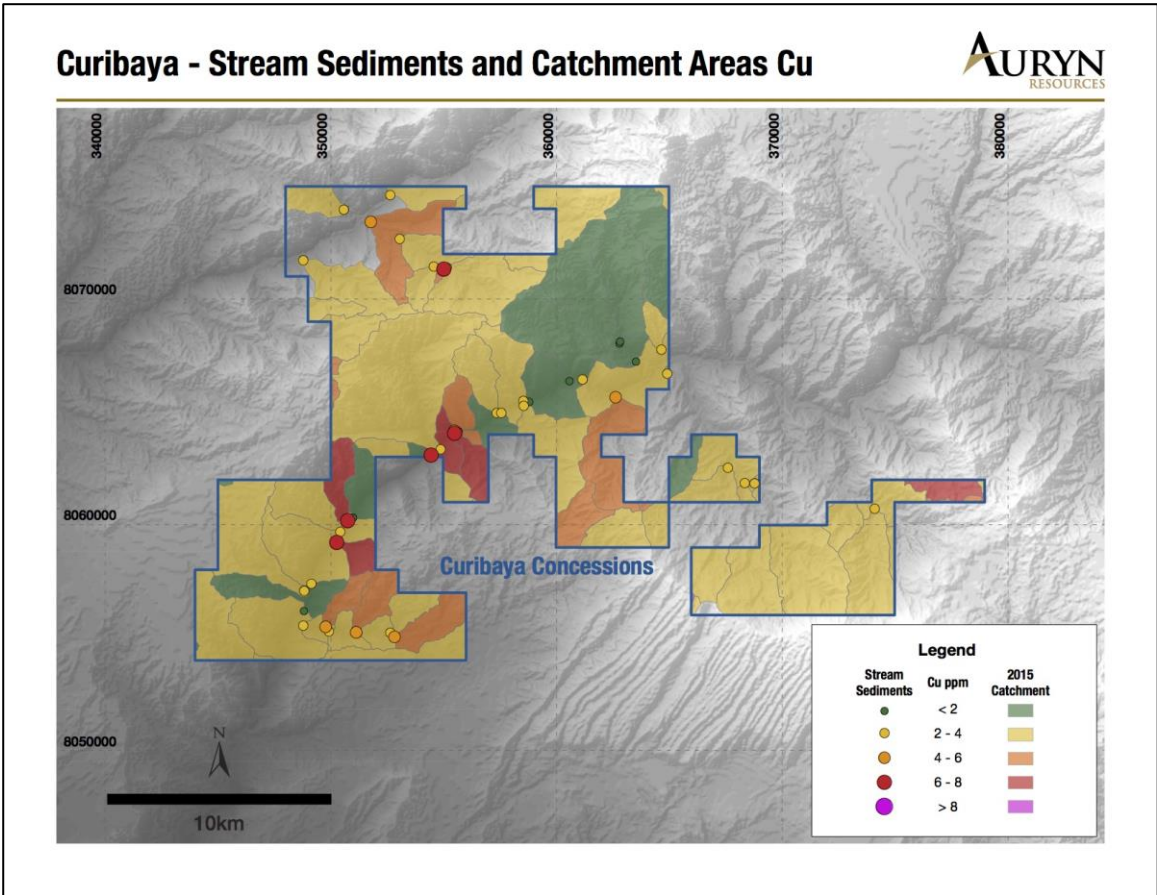


Figure 7: Illustrates anomalous copper bearing drainages within the Curibaya concessions