

*Targets defined by pan-concentrate program, highlighting targets defined for the initial soil follow-up program. Initial soil results have been received for the Gazetta Project with infill proceeding; full results for the reconnaissance program in the Sincol – Araçatuba target are pending.*

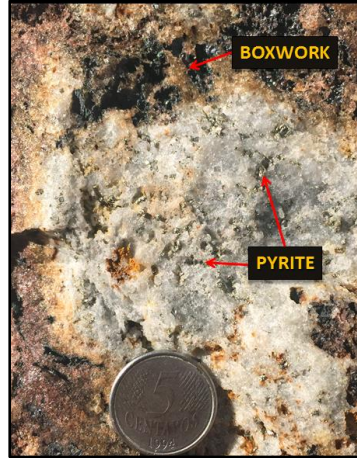


*Pan concentrate program at the Sincol – Araçatuba Target*

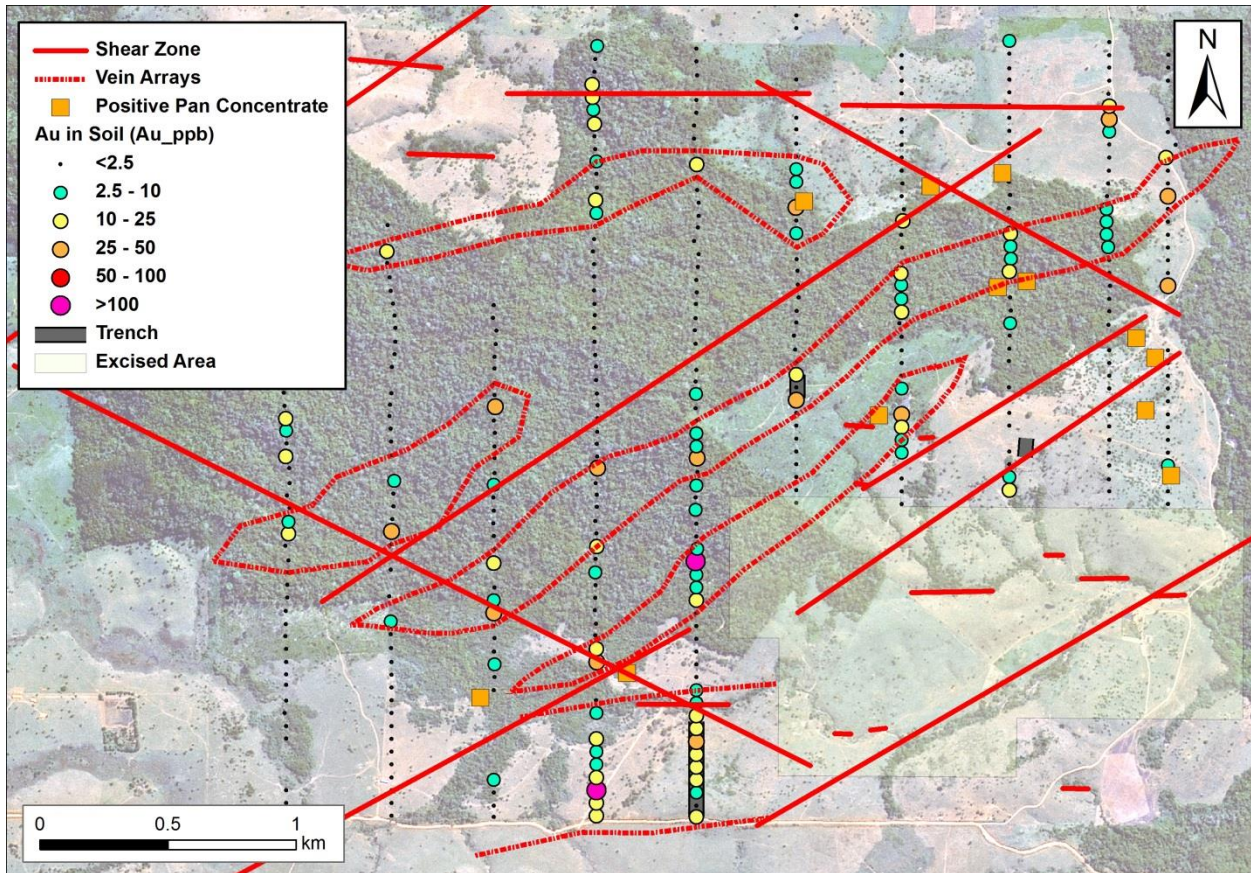


*Soil geochemical surveys in progress at the Gazetta Target.*





*Gazetta Prospect: Variably sheared to brittle quartz veins with sulphides and boxworks (rock chip and channel sample results pending).*



*Geochemical survey results at the Gazetta Gold Target, with interpreted structures (based on mapping and geophysical interpretation).*