

Committee Bay: Potential for Multiple Major Discoveries

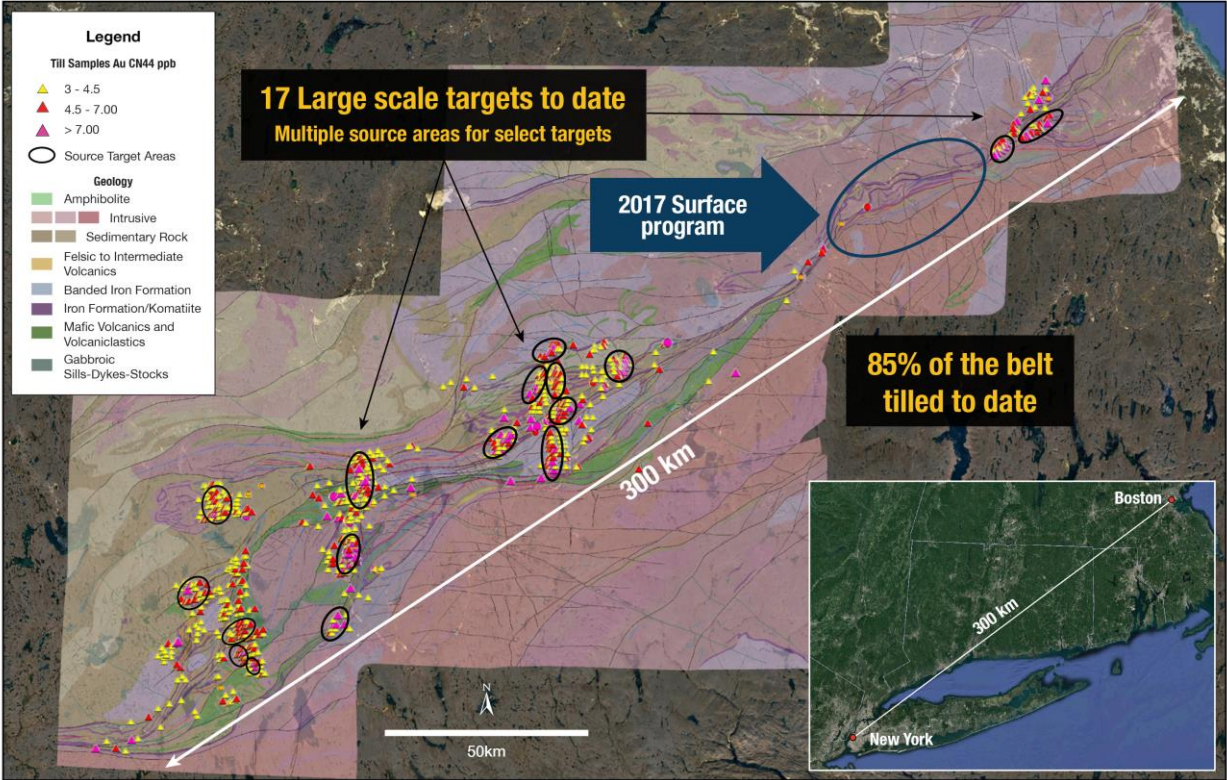


Figure 1: illustrates drill targets defined by the 98th percentile of tills within 5 structural corridors across the Committee Bay belt.

Target Areas – Southeast Region

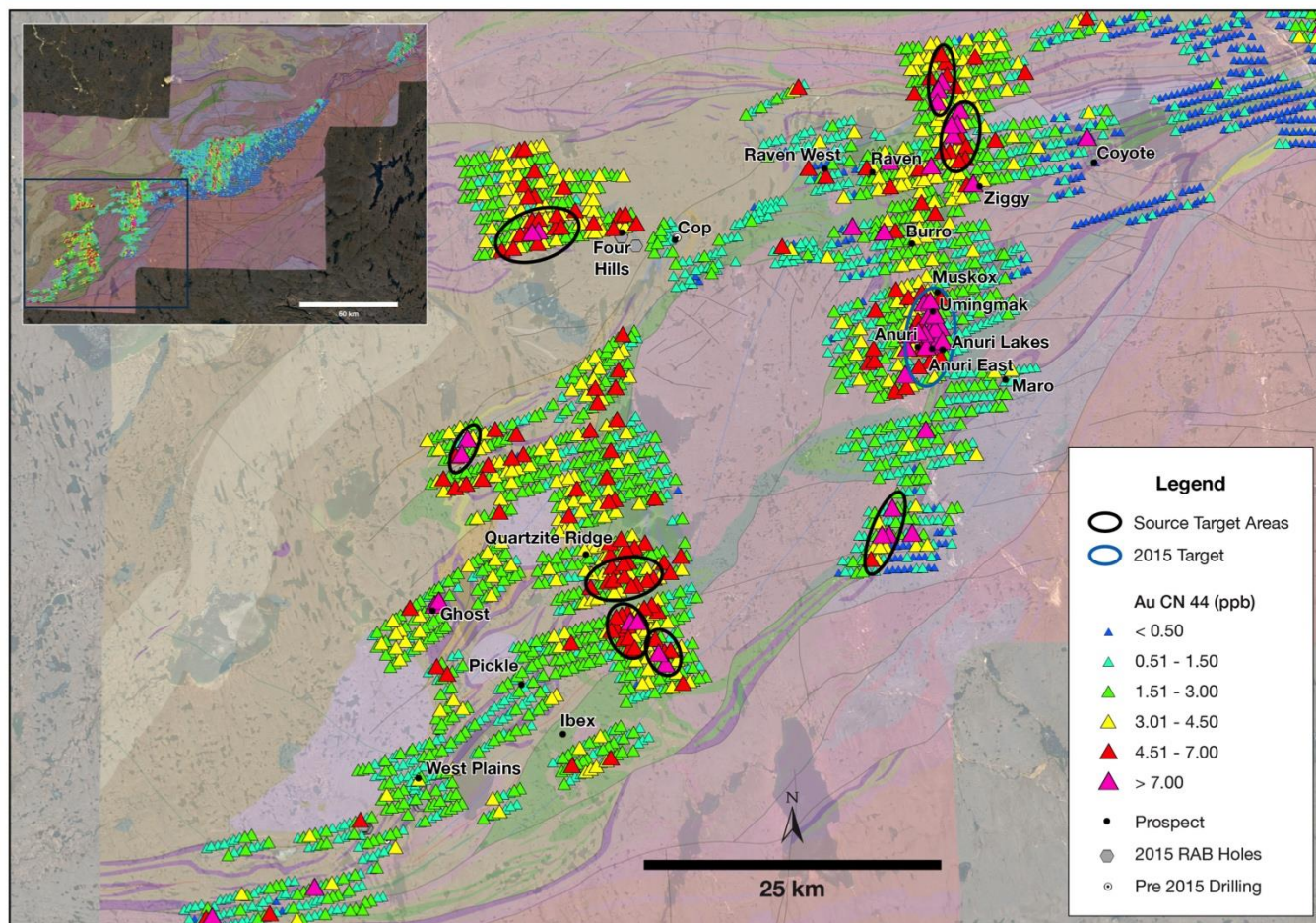


Figure 2: Illustrates the 9 highest priority till anomalies and potential source areas from the south-west region of the Committee Bay Belt.

Target Areas – Three Bluffs Region

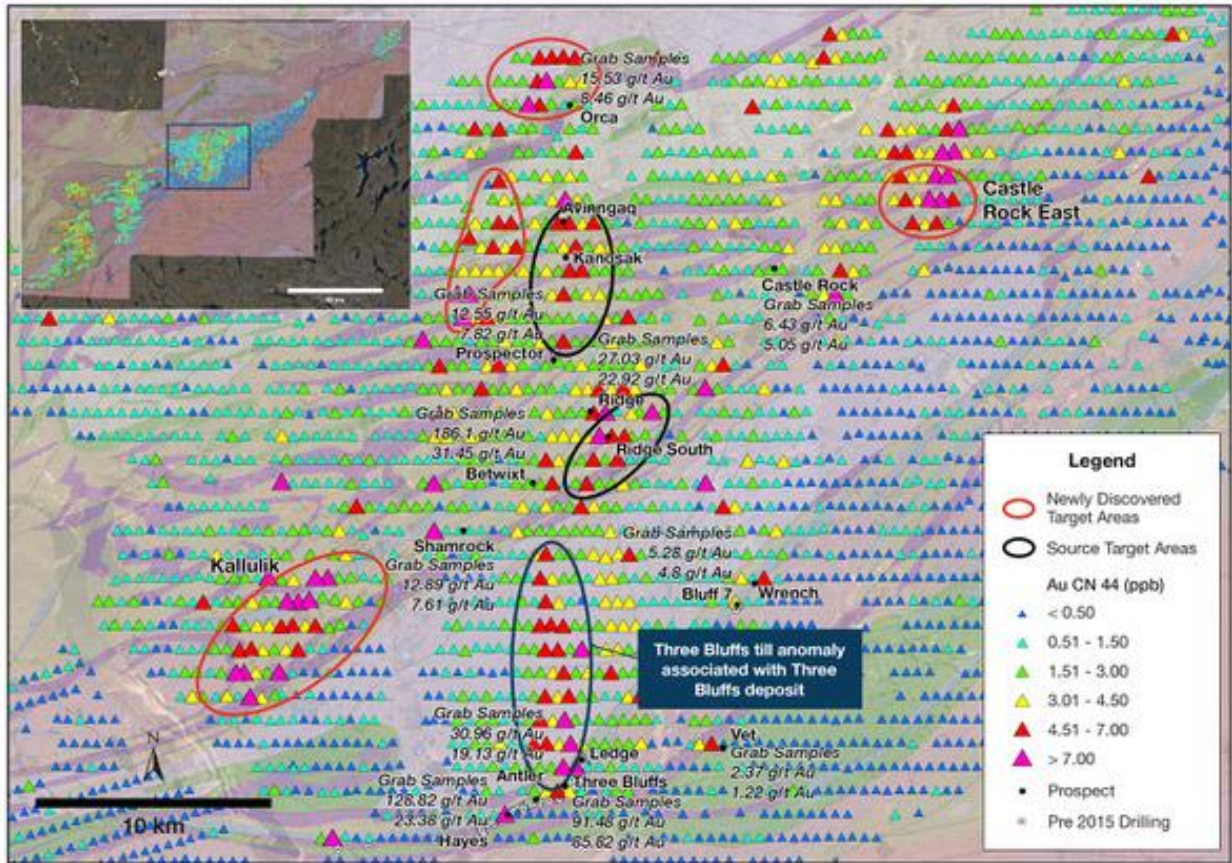


Figure 3: Illustrates the 6 highest priority till anomalies and potential source areas from the Three Bluff region of the Committee Bay Belt.

Target Areas – Northeast Region

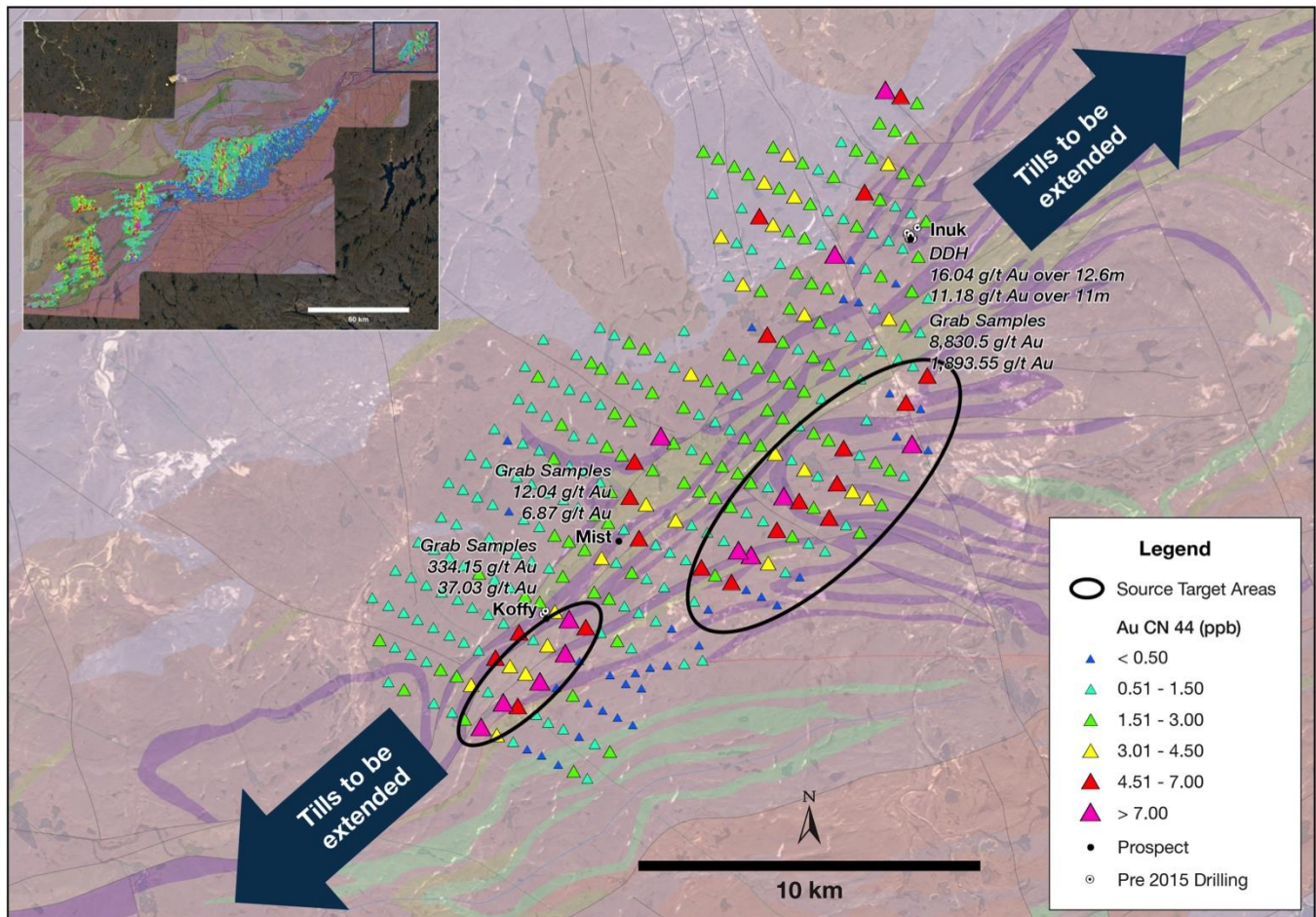


Figure 4: Illustrates the 2 highest priority till anomalies and potential source areas from the north-east region of the Committee Bay Belt in the vicinity of the Inuk prospect.

Four Hills Till Anomaly Similar to Three Bluffs in Scale

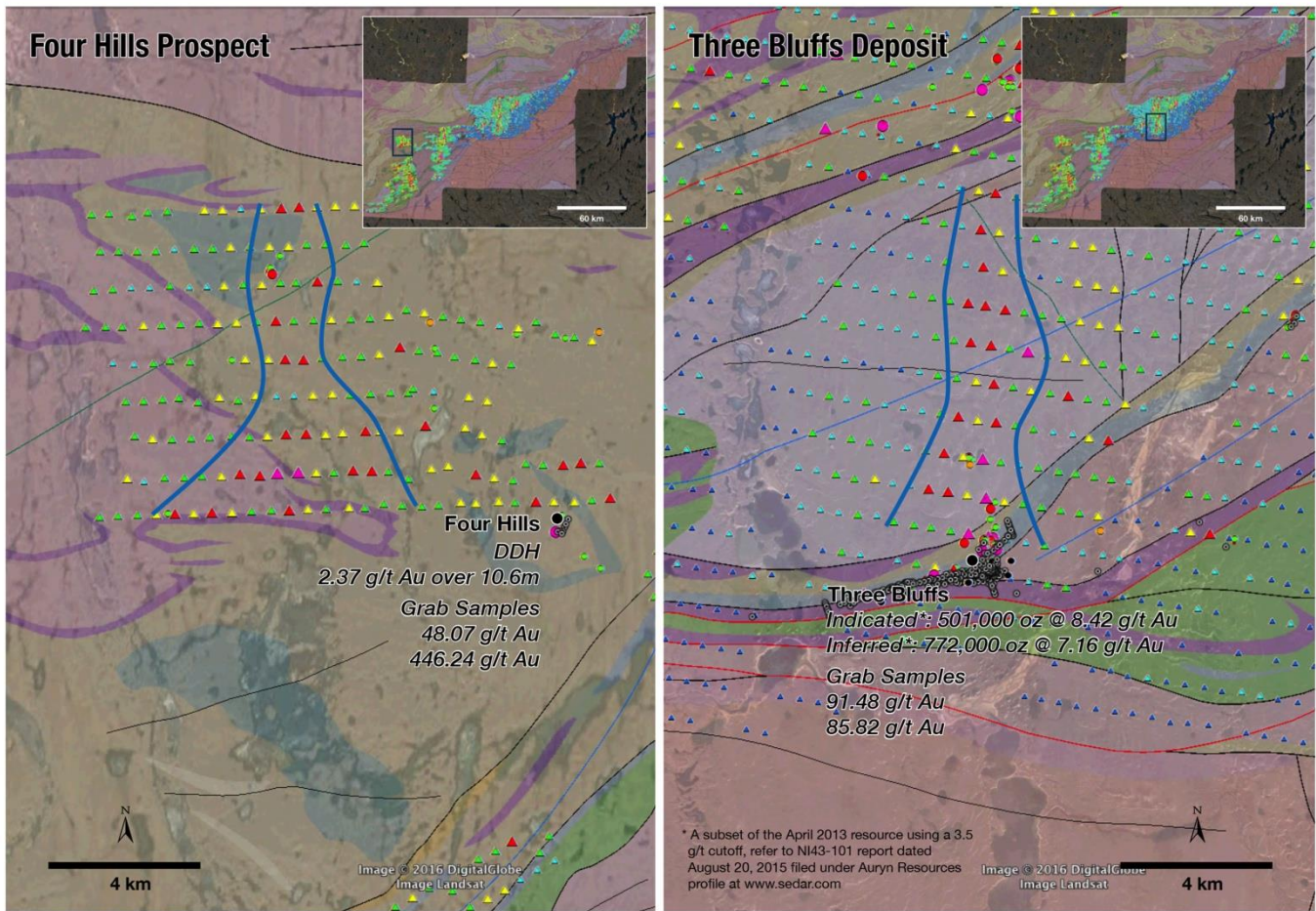


Figure 5: Illustrates the similarity between the Four Hills and Three Bluffs deposit till anomalies. Note that the Four Hills till anomaly has a 3.5 km potential source area.

Three Bluffs Playing Field Till Anomalies

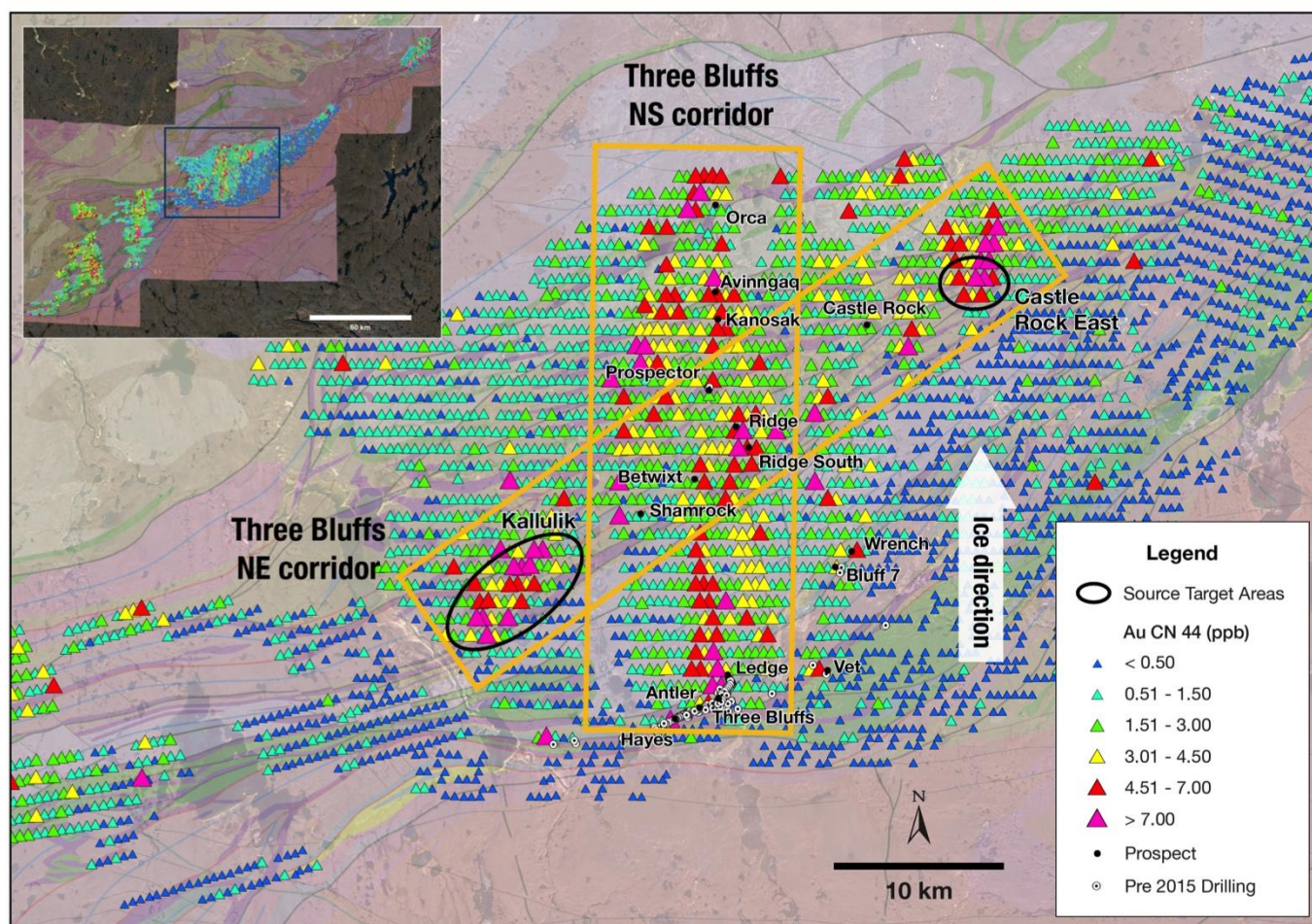


Figure 6: Illustrates the two mineralized trends within the Three Bluffs region of the Committee Bay Belt. The north-south trend is defined by the Three Bluffs deposit, Ridge, Prospector, Kanosak, Avinngaq, and Orca till anomalies and are situated along a corridor of subtle north-south trending structures identified in the 2016 high resolution airborne magnetics and electro-magnetics geophysical survey.