

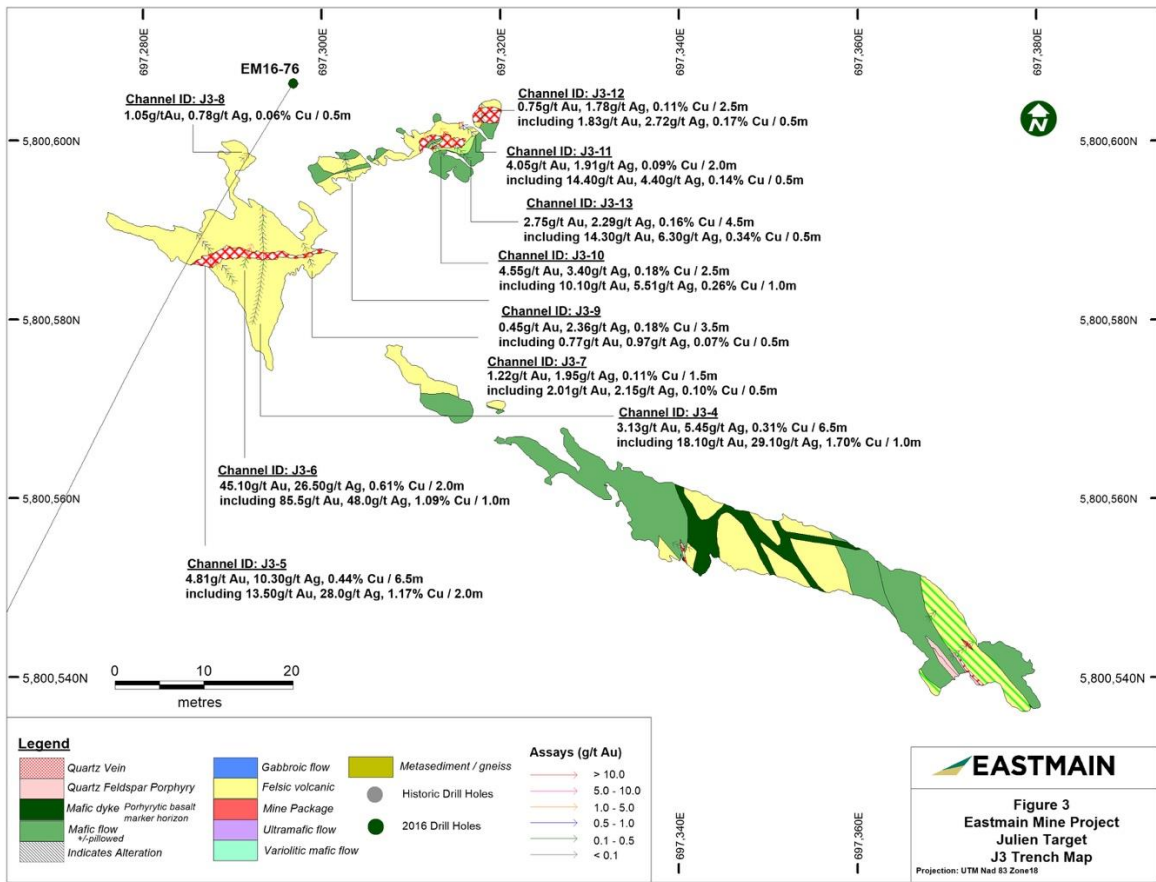
| | | |
|--|-----------------------|-----------------------|
| Legend | | |
| Quartz Vein | Gabbroic flow | Metasediment / gneiss |
| Quartz Feldspar Porphyry | Felsic volcanic | Historic Drill Holes |
| Mafic dyke Porphyritic basalt marker horizon | Mine Package | 2016 Drill Holes |
| Mafic flow +/- pillowed | Ultramafic flow | |
| Indicates Alteration | Variolitic mafic flow | |

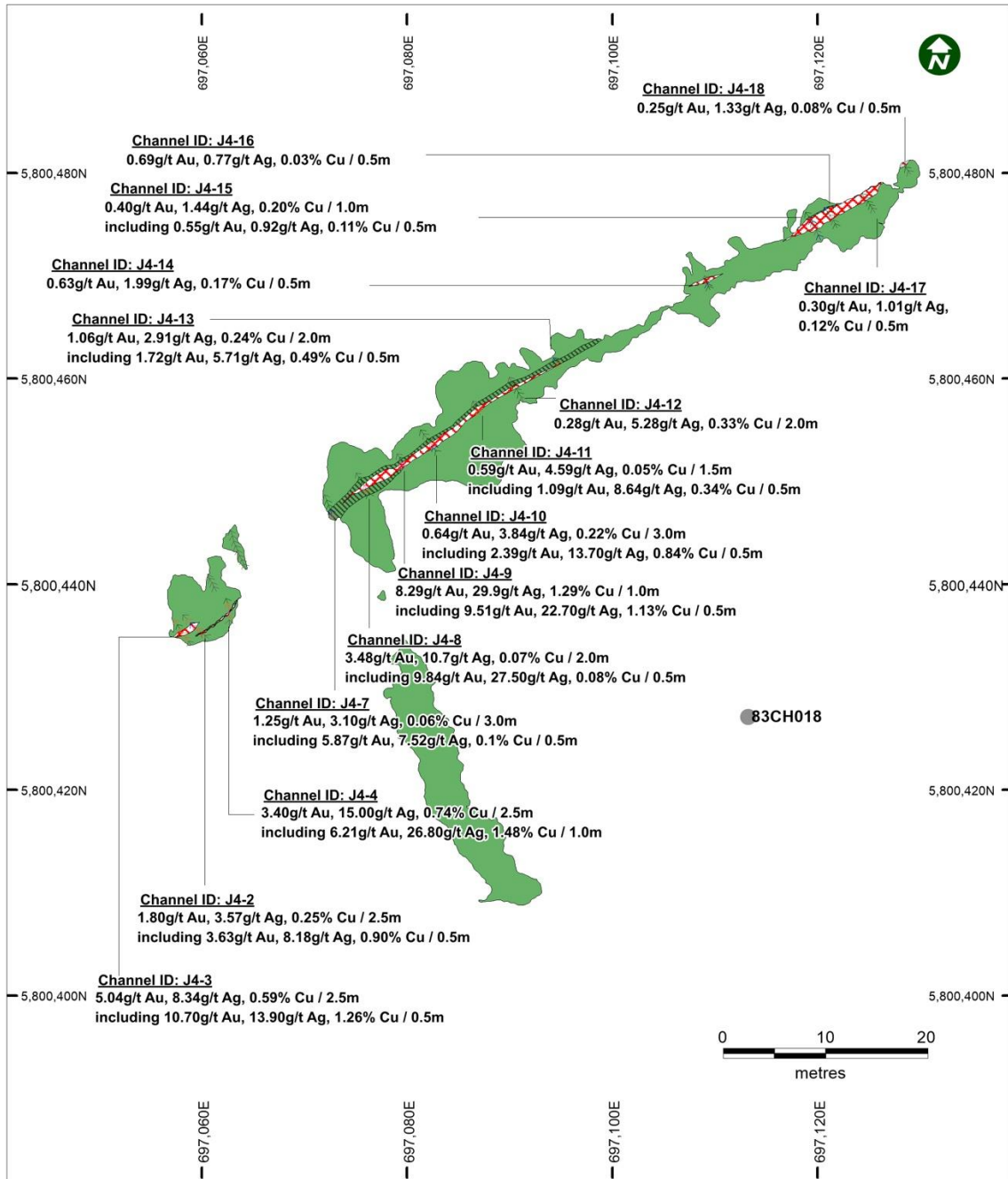
| |
|------------------------|
| Assays (g/t Au) |
| > 10.0 |
| 5.0 - 10.0 |
| 1.0 - 5.0 |
| 0.5 - 1.0 |
| 0.1 - 0.5 |
| < 0.1 |

EASTMAIN

Figure 2
Eastmain Mine Project
Julien Target
J1 Trench Map

Projection: UTM Nad 83 Zone18





Legend

- | | | |
|--|-----------------------|-----------------------|
| Quartz Vein | Gabbroic flow | Metasediment / gneiss |
| Quartz Feldspar Porphyry | Felsic volcanic | Historic Drill Holes |
| Mafic dyke Porphyritic basalt marker horizon | Mine Package | 2016 Drill Holes |
| Mafic flow +/-pillowed | Ultramafic flow | |
| Indicates Alteration | Variolitic mafic flow | |

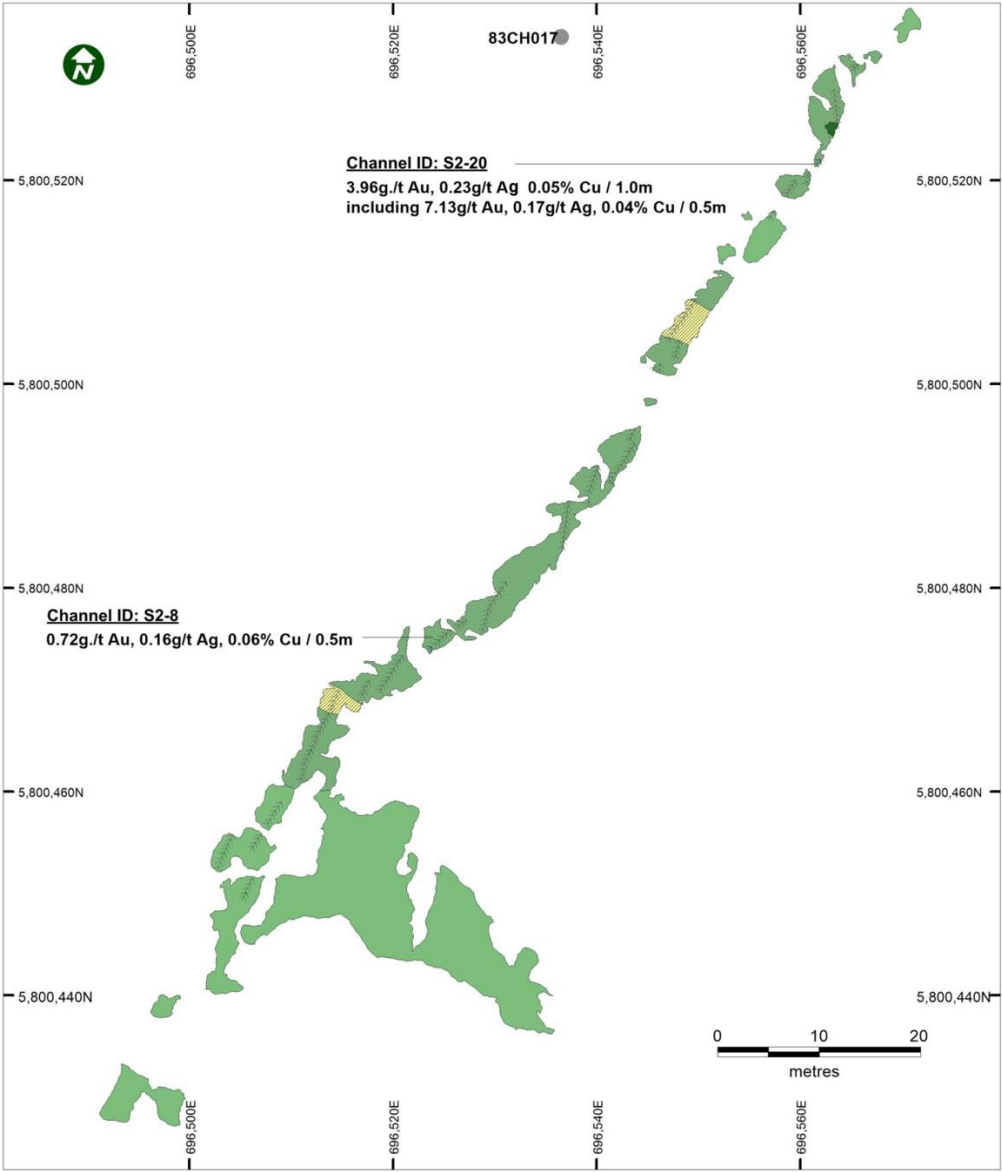
Assays (g/t Au)

- | | |
|--|------------|
| | > 10.0 |
| | 5.0 - 10.0 |
| | 1.0 - 5.0 |
| | 0.5 - 1.0 |
| | 0.1 - 0.5 |
| | < 0.1 |



Figure 4
Eastmain Mine Project
Julien Target
J4 Trench Map

Projection: UTM Nad 83 Zone18



| | | | |
|---|--|---|--|
| Legend | | | Assays (g/t Au) > 10.0 5.0 - 10.0 1.0 - 5.0 0.5 - 1.0 0.1 - 0.5 < 0.1 |
| Quartz Vein Quartz Feldspar Porphyry Mafic dyke Mafic flow Mafic flow Pillowed Indicates Alteration | Gabbroic flow Felsic volcanic Mine Package Ultramafic flow Variolitic mafic flow | Metasediment / gneiss Historic Drill Holes 2016 Drill Holes | |

EASTMAIN

Figure 5
Eastmain Mine Project
Suzanna Target
S2 Trench Map

Projection: UTM Nad 83 Zone 18