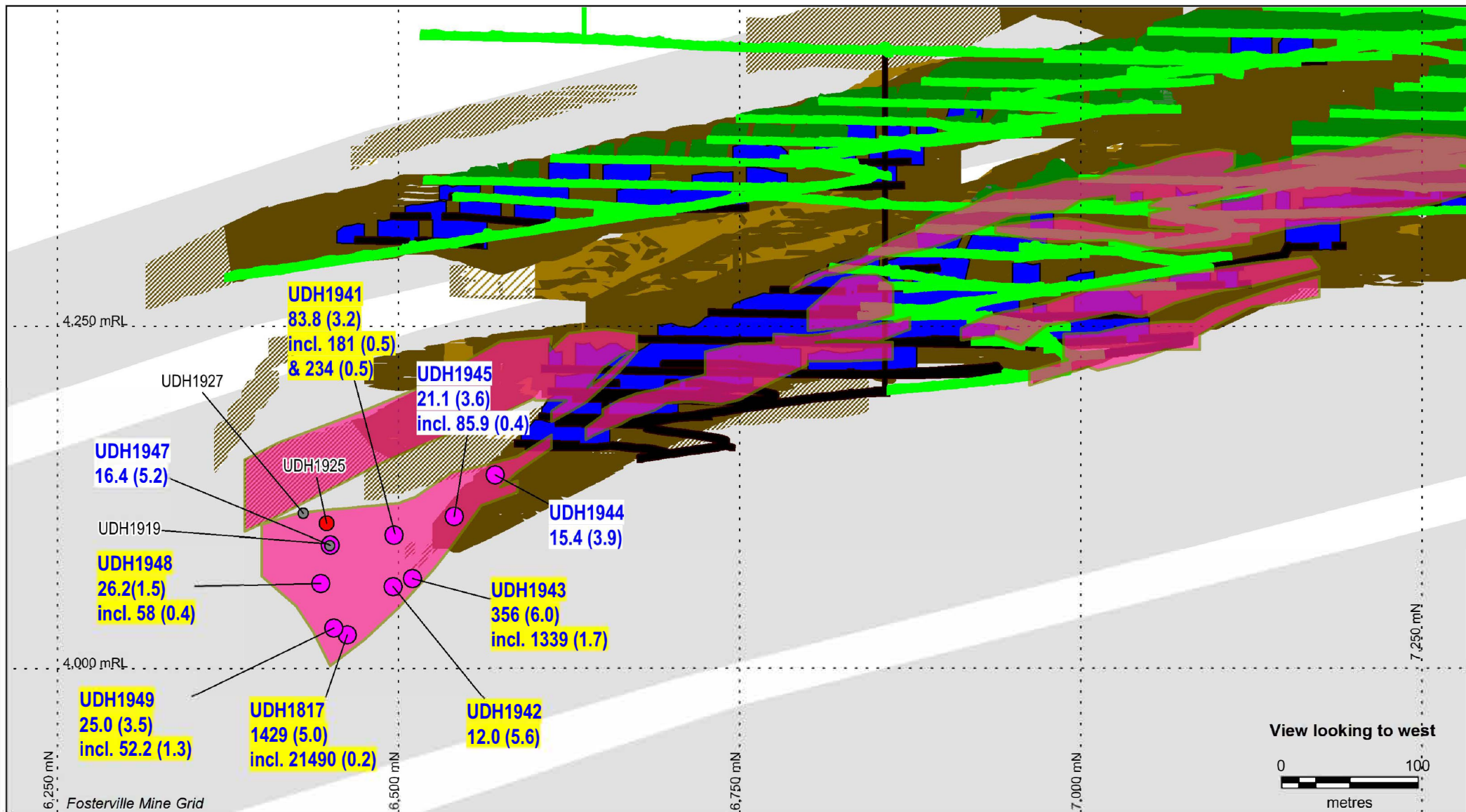


# Longitudinal Projection, Fosterville Gold Mine

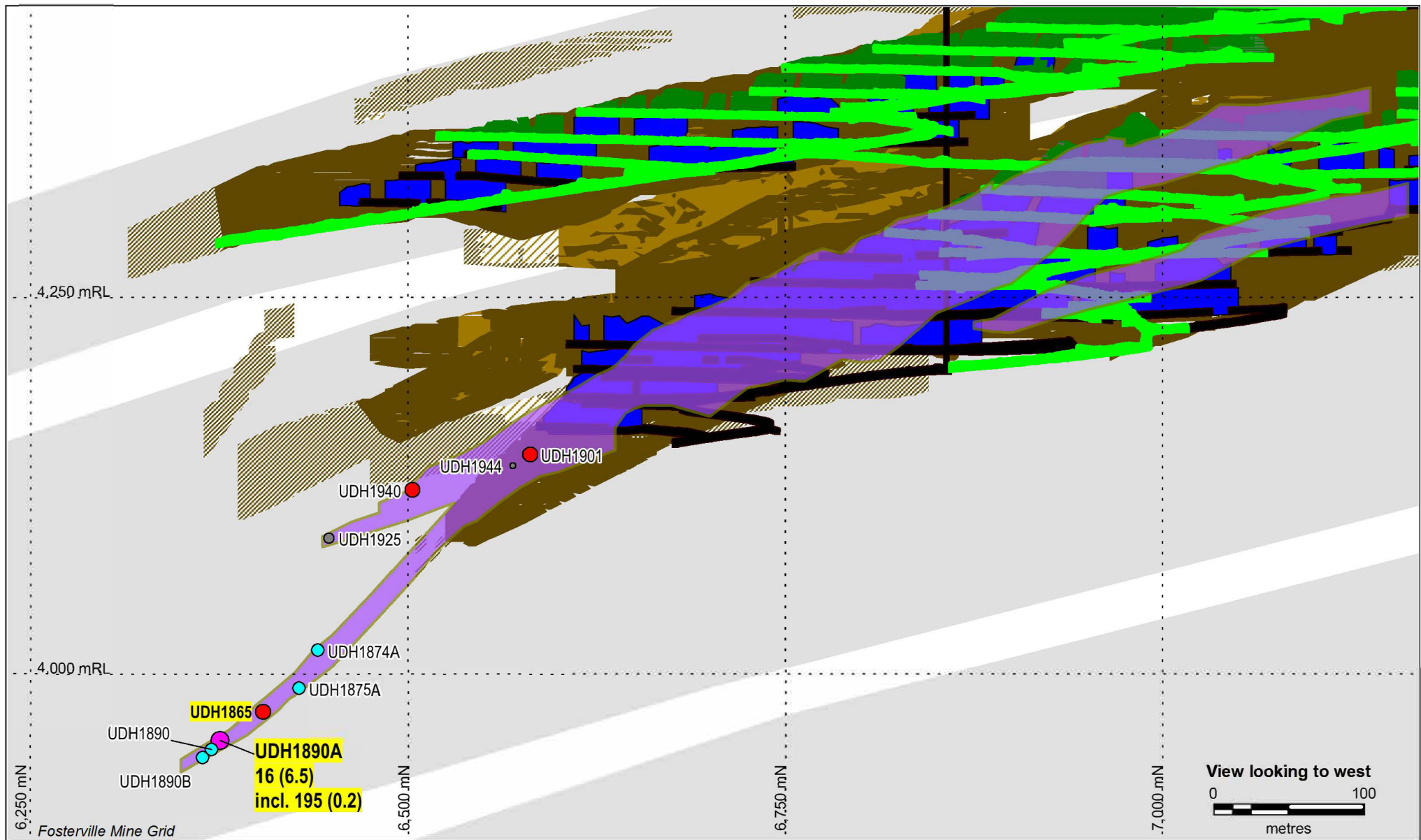
Figure 1



**LEGEND**

<p><b>MINING</b></p> <ul style="list-style-type: none"> <li>Mined Stopes</li> <li>Mined Development</li> </ul> <p><i>(Mineral Resources, Reserves and Mining as at December 31, 2015)</i></p>	<p><b>RESOURCE GRADE SHELLS</b></p> <table border="0"> <tr> <td>Indicated</td> <td>Inferred</td> </tr> <tr> <td>&gt;3 g/t Au</td> <td>&gt;3 g/t Au</td> </tr> <tr> <td>1.5 g/t Au</td> <td>1.5 g/t Au</td> </tr> </table>	Indicated	Inferred	>3 g/t Au	>3 g/t Au	1.5 g/t Au	1.5 g/t Au	<p><b>TARGET AREAS</b></p> <ul style="list-style-type: none"> <li>Trend</li> </ul> <p><b>MINERALIZATION</b></p> <ul style="list-style-type: none"> <li>Lower Phoenix FW</li> </ul>	<p><b>DRILL INTERCEPTS</b> (Coloured By *Gram-Metre)</p> <ul style="list-style-type: none"> <li>&gt;30</li> <li>15 to 30</li> <li>5 to 15</li> <li>1 to 5</li> <li>0 to 1</li> </ul>	<p><b>DRILL INTERCEPT LABELS</b> (Shown for &gt;30 *Gram-Metres or Visible Gold)</p> <ul style="list-style-type: none"> <li>Hole Name</li> <li>Grade (g/t Au) &amp; (Estimated True Width (m))</li> <li>Visible Gold highlighted in yellow</li> </ul> <p>*Gram-Metre = Gold Grade x Estimated True Width</p>
Indicated	Inferred									
>3 g/t Au	>3 g/t Au									
1.5 g/t Au	1.5 g/t Au									

**Figure 2**      **Longitudinal Projection of Lower Phoenix FW Mineralization, Fosterville Gold Mine**      January 2017



**MINING**

- Mined Stopes
- Reserve
- Mined Development
- Mine Design

(Mineral Resources, Reserves and Mining as at December 31, 2015)

**RESOURCE GRADE SHELLS**

- |  |  |
|--|--|
| <p><b>Indicated</b></p> <ul style="list-style-type: none"> <li><span style="display: inline-block; width: 15px; height: 15px; background-color: brown; border: 1px solid black; margin-right: 5px;"></span> &gt;3 g/t Au</li> <li><span style="display: inline-block; width: 15px; height: 15px; background-color: olive; border: 1px solid black; margin-right: 5px;"></span> 1.5 g/t Au</li> </ul> | <p><b>Inferred</b></p> <ul style="list-style-type: none"> <li><span style="display: inline-block; width: 15px; height: 15px; background: repeating-linear-gradient(45deg, transparent, transparent 2px, black 2px, black 4px); border: 1px solid black; margin-right: 5px;"></span> &gt;3 g/t Au</li> <li><span style="display: inline-block; width: 15px; height: 15px; background: repeating-linear-gradient(-45deg, transparent, transparent 2px, black 2px, black 4px); border: 1px solid black; margin-right: 5px;"></span> 1.5 g/t Au</li> </ul> |
|--|--|

**TARGET AREAS**

- Trend
- Eagle

**DRILL INTERCEPTS**

- (Coloured By \*Gram-Metre)
- >30
  - 15 to 30
  - 5 to 15
  - 1 to 5
  - 0 to 1

**DRILL INTERCEPT LABELS**

- (Shown for >30 \*Gram-Metres or Visible Gold)
- Hole Name
  - Grade (g/t Au) & (Estimated True Width (m))
  - Visible Gold highlighted in yellow

\*Gram-Metre = Gold Grade x Estimated True Width

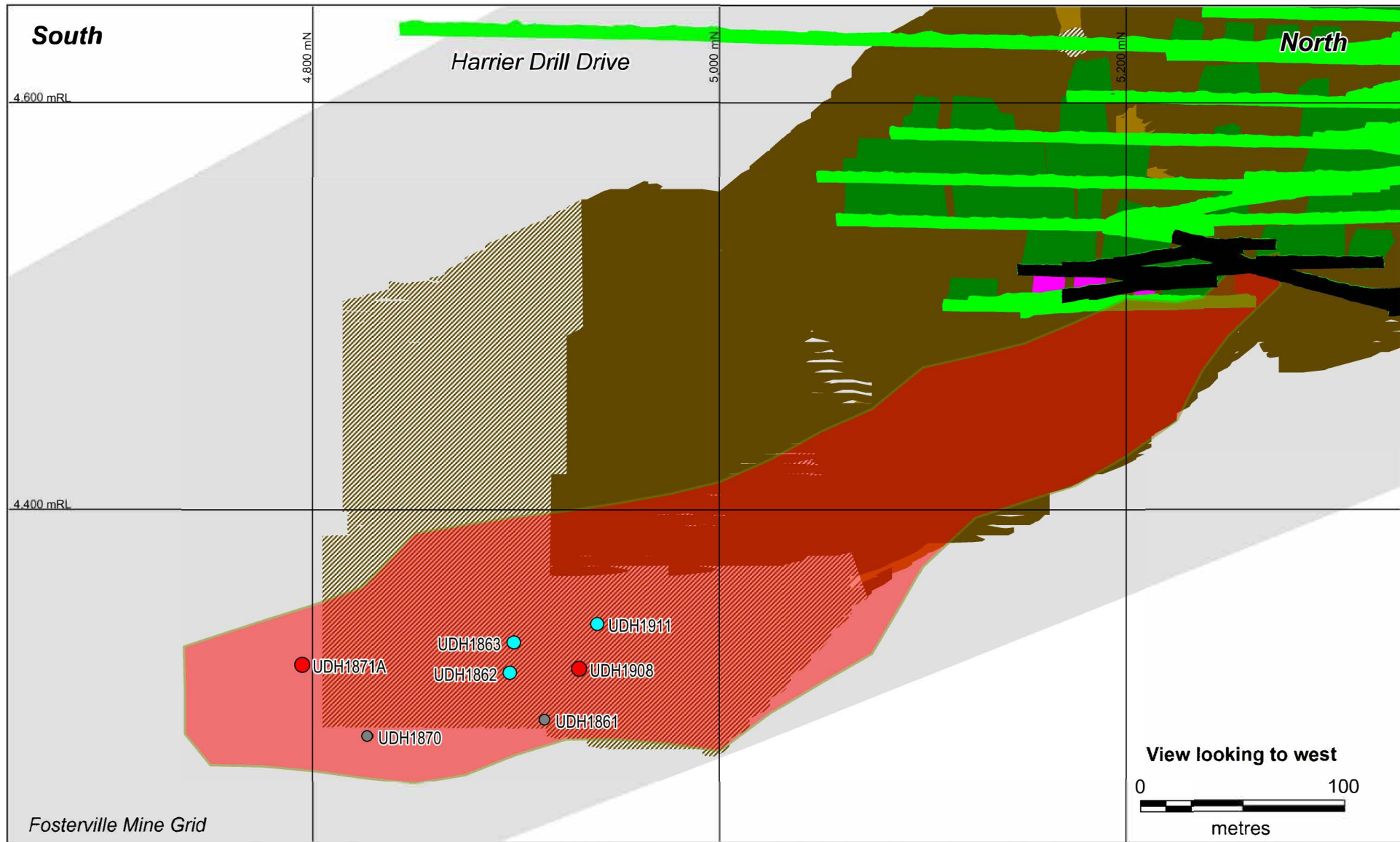


**KIRKLAND LAKE GOLD**

**Figure 3**

**Longitudinal Projection of Eagle Mineralization, Fosterville Gold Mine**

January 2017



**MINING**

- Mined Stopes
- Mined Development

- Reserve
- Mine Design

**RESOURCE GRADE SHELLS**

- |   |   |
|---|---|
| <b>Indicated</b>  | <b>Inferred</b>   |
| <span style="display: inline-block; width: 15px; height: 15px; background-color: #808000; border: 1px solid black; margin-right: 5px;"></span> >3 g/t Au  | <span style="display: inline-block; width: 15px; height: 15px; background: repeating-linear-gradient(45deg, transparent, transparent 2px, #808000 2px, #808000 4px); border: 1px solid black; margin-right: 5px;"></span> >3 g/t Au   |
| <span style="display: inline-block; width: 15px; height: 15px; background-color: #FFD700; border: 1px solid black; margin-right: 5px;"></span> 1.5 g/t Au | <span style="display: inline-block; width: 15px; height: 15px; background: repeating-linear-gradient(-45deg, transparent, transparent 2px, #FFD700 2px, #FFD700 4px); border: 1px solid black; margin-right: 5px;"></span> 1.5 g/t Au |

**LEGEND**

**TARGET AREAS**

- Trend
- MINERALIZATION**
- Harrier Base

**DRILL INTERCEPTS**  
(Coloured By \*Gram-Metre)

- >30
- 15 to 30
- 5 to 15
- 1 to 5
- 0 to 1

**DRILL INTERCEPT LABELS**

- (Shown for >30 \*Gram-Metres or Visible Gold)
- Hole Name
  - Grade (g/t Au) & (Estimated True Width (m))
  - Visible Gold highlighted in yellow

\*Gram-Metre = Gold Grade x Estimated True Width

(Mineral Resources, Reserves and Mining as at December 31, 2015)



**Figure 4**

**Longitudinal Projection of Harrier Base Mineralization, Fosterville Gold Mine**

January 2017