

Nunavut Gold Deposits - Magnetics Signature

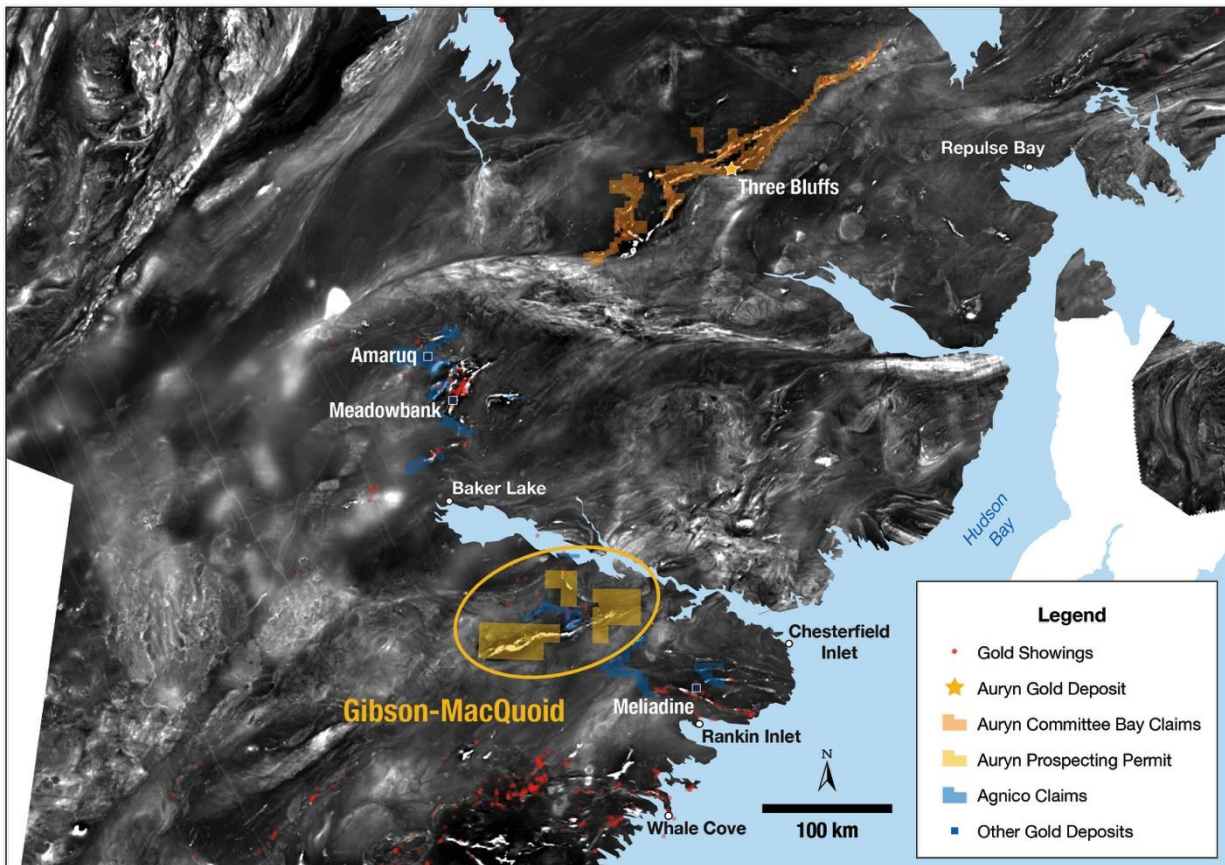


Figure 1: Illustrates the position of the Gibsons MacQuoid greenstone belt in the eastern Arctic between the Meliadine and Meadowbank deposits on a regional magnetics background. Importantly, all significant known deposits in the Eastern Arctic are located on greenstone belts that have a highly magnetic signature such as the Meliadine, Meadowbank, Amaruq and the Three Bluffs deposits.