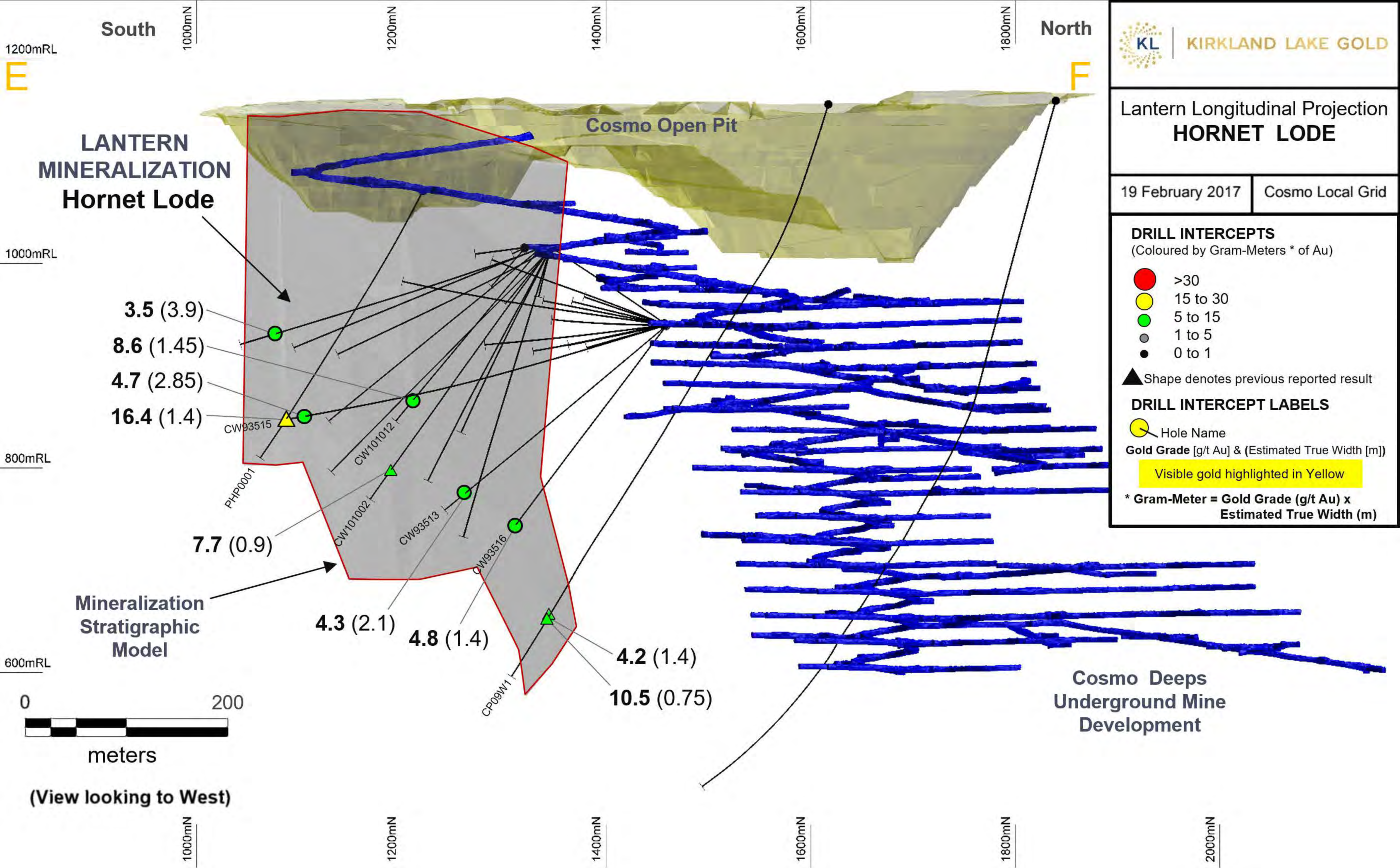


* Gram-Meter = Gold Grade x Est. True Width



Lantern Section 1270mN (+/- 15m)



Lantern Longitudinal Projection
HORNET LODGE

19 February 2017 | Cosmo Local Grid

DRILL INTERCEPTS
(Coloured by Gram-Meters * of Au)

- >30
- 15 to 30
- 5 to 15
- 1 to 5
- 0 to 1

▲ Shape denotes previous reported result

DRILL INTERCEPT LABELS

- Hole Name
- Gold Grade [g/t Au] & (Estimated True Width [m])
- Visible gold highlighted in Yellow

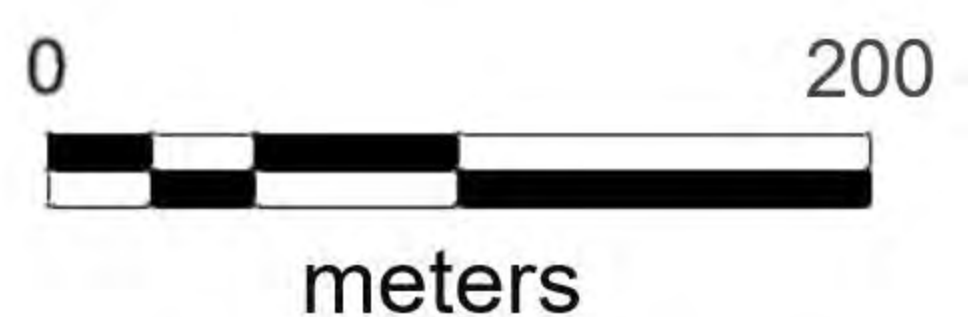
* Gram-Meter = Gold Grade (g/t Au) x Estimated True Width (m)

LANTERN MINERALIZATION Hornet Lode

Cosmo Open Pit

Cosmo Deeps Underground Mine Development

Mineralization Stratigraphic Model



(View looking to West)

3.5 (3.9)
8.6 (1.45)
4.7 (2.85)
16.4 (1.4)

7.7 (0.9)

4.3 (2.1)

4.8 (1.4)

4.2 (1.4)

10.5 (0.75)

CW93515

CW101012

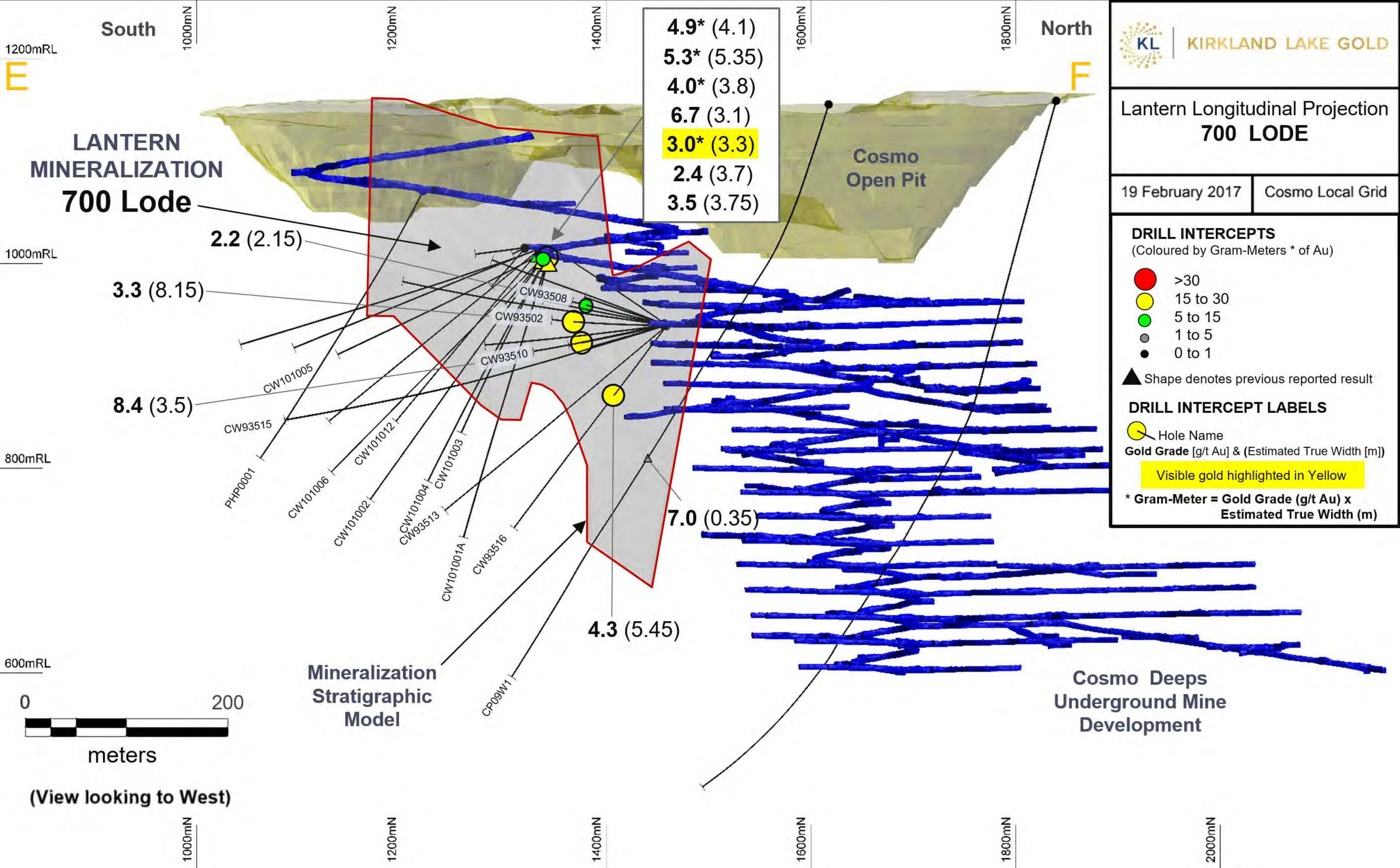
CW93513

CW93516

PHP0001

CW101002

CP09W1



E

F

Lantern Longitudinal Projection
W1 LODE

19 February 2017 | Cosmo Local Grid

DRILL INTERCEPTS
(Coloured by Gram-Meters * of Au)

- >30
- 15 to 30
- 5 to 15
- 1 to 5
- 0 to 1

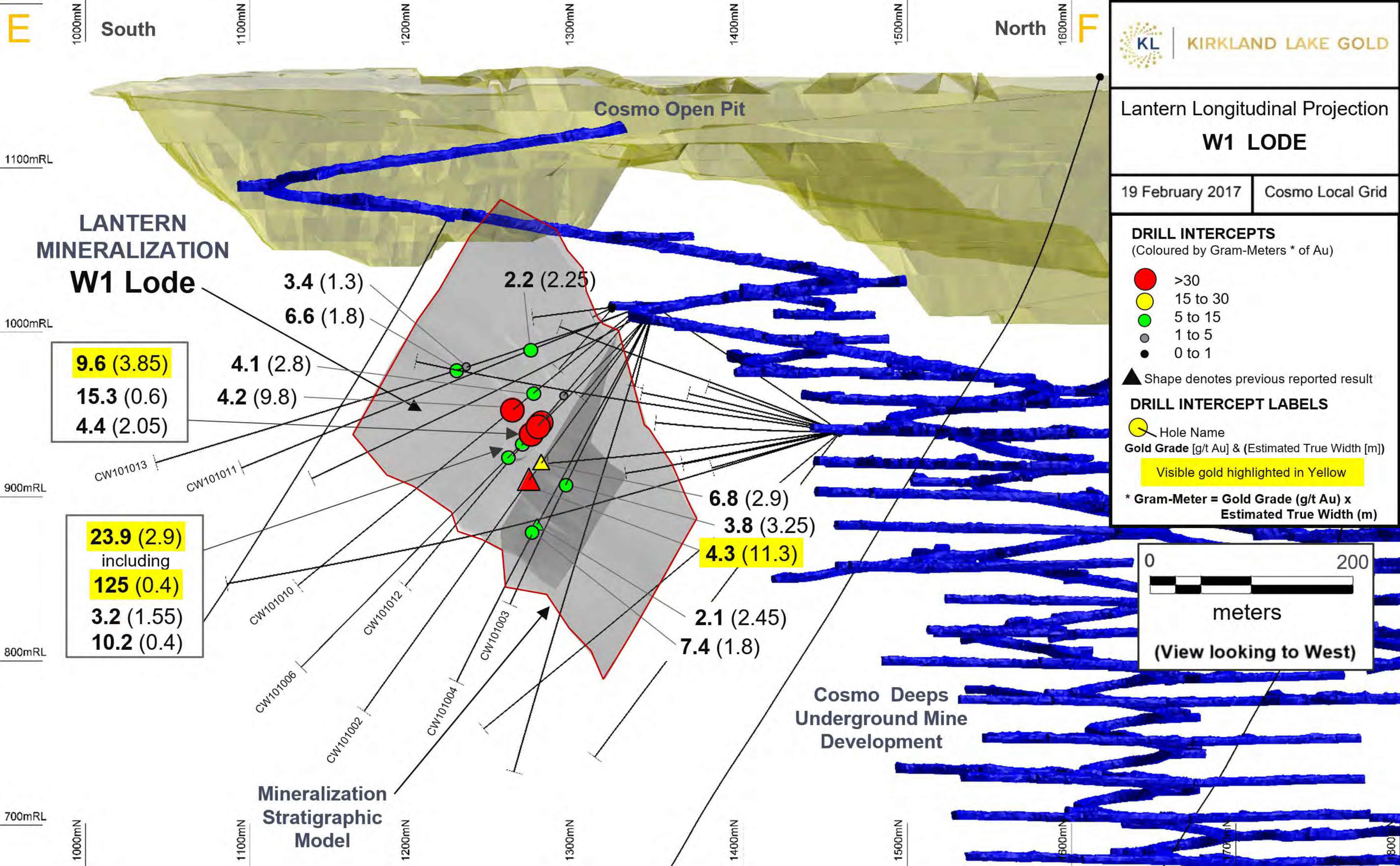
▲ Shape denotes previous reported result

DRILL INTERCEPT LABELS

○ Hole Name
Gold Grade [g/t Au] & (Estimated True Width [m])

Visible gold highlighted in Yellow

* Gram-Meter = Gold Grade (g/t Au) x Estimated True Width (m)



LANTERN MINERALIZATION W1 Lode

Cosmo Open Pit

Cosmo Deeps Underground Mine Development

Mineralization Stratigraphic Model

0 200
meters
(View looking to West)

9.6 (3.85)
15.3 (0.6)
4.4 (2.05)

23.9 (2.9) including
125 (0.4)
3.2 (1.55)
10.2 (0.4)

3.4 (1.3)
6.6 (1.8)

2.2 (2.25)

4.1 (2.8)
4.2 (9.8)

6.8 (2.9)
3.8 (3.25)
4.3 (11.3)

2.1 (2.45)
7.4 (1.8)

CW101013

CW101011

CW101010

CW101012

CW101003

CW101006

CW101002

CW101004

1100mRL

1000mRL

900mRL

800mRL

700mRL

1000mN

1100mN

1200mN

1300mN

1400mN

1500mN

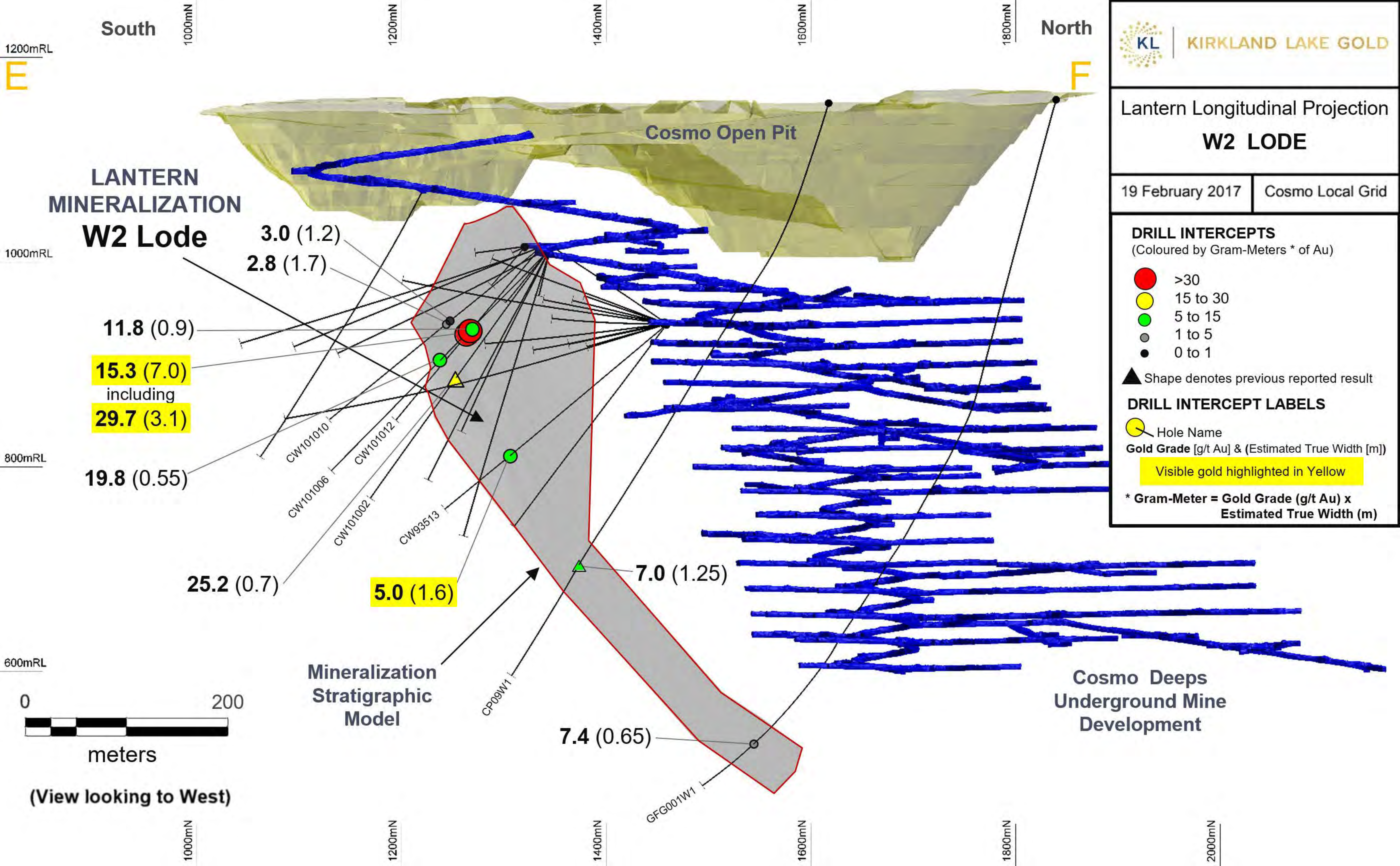
1600mN

1700mN

1800mN

South

North



E

F

Lantern Longitudinal Projection
W3 LODE

19 February 2017 | Cosmo Local Grid

DRILL INTERCEPTS
(Coloured by Gram-Meters * of Au)

- >30
- 15 to 30
- 5 to 15
- 1 to 5
- 0 to 1

▲ Shape denotes previous reported result

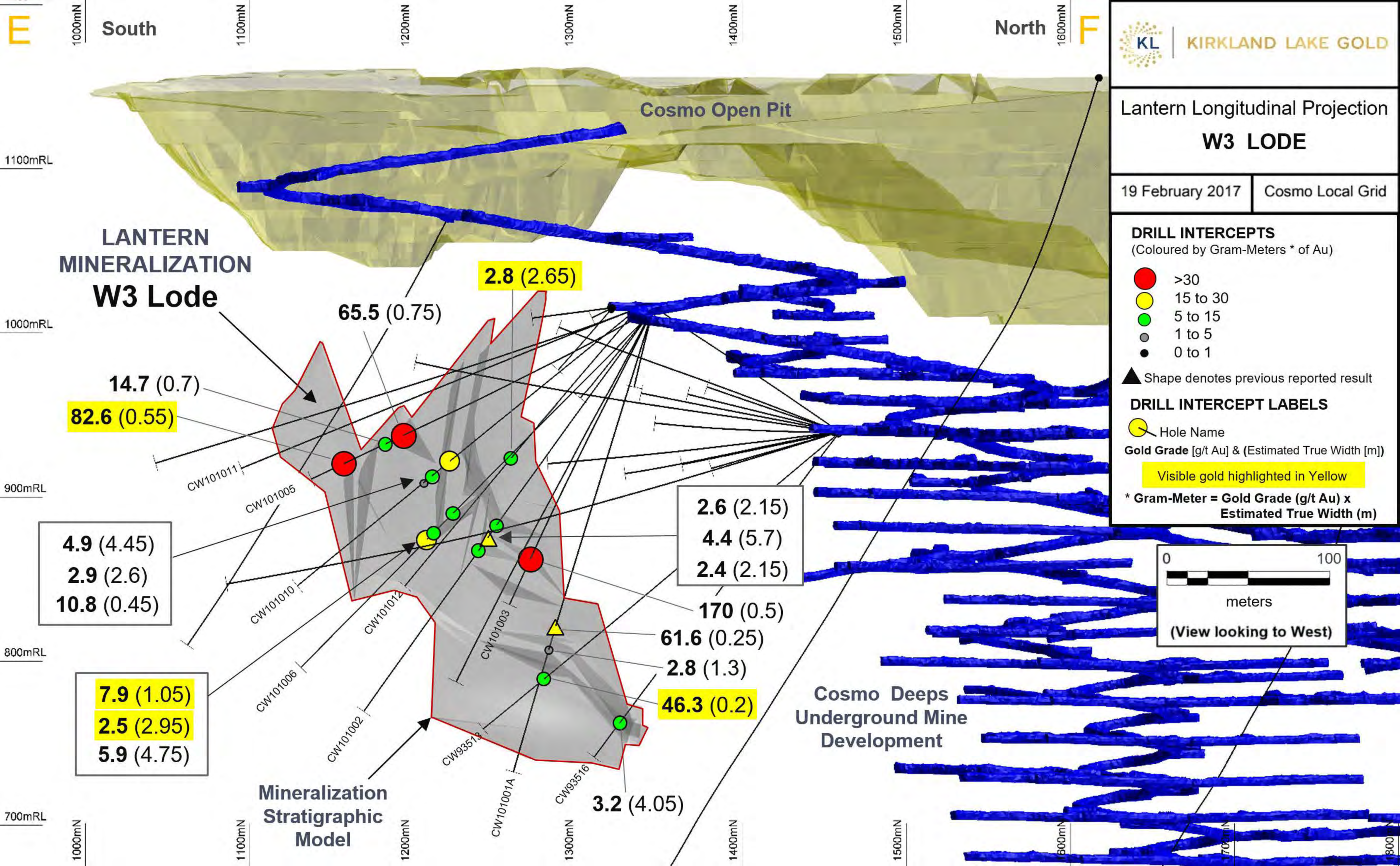
DRILL INTERCEPT LABELS

○ Hole Name

Gold Grade [g/t Au] & (Estimated True Width [m])

Visible gold highlighted in Yellow

* Gram-Meter = Gold Grade (g/t Au) x Estimated True Width (m)



Cosmo Open Pit

LANTERN MINERALIZATION W3 Lode

Mineralization Stratigraphic Model

Cosmo Deeps Underground Mine Development

0 100
meters
(View looking to West)

82.6 (0.55)

2.8 (2.65)

65.5 (0.75)

14.7 (0.7)

4.9 (4.45)
2.9 (2.6)
10.8 (0.45)

2.6 (2.15)
4.4 (5.7)
2.4 (2.15)

7.9 (1.05)
2.5 (2.95)
5.9 (4.75)

170 (0.5)
61.6 (0.25)
2.8 (1.3)
46.3 (0.2)

3.2 (4.05)

CW101011

CW101005

CW101010

CW101012

CW101003

CW101006

CW101002

CW93513

CW101001A

CW93516

1100mRL

1000mRL

900mRL

800mRL

700mRL

1000mN

1100mN

1200mN

1300mN

1400mN

1500mN

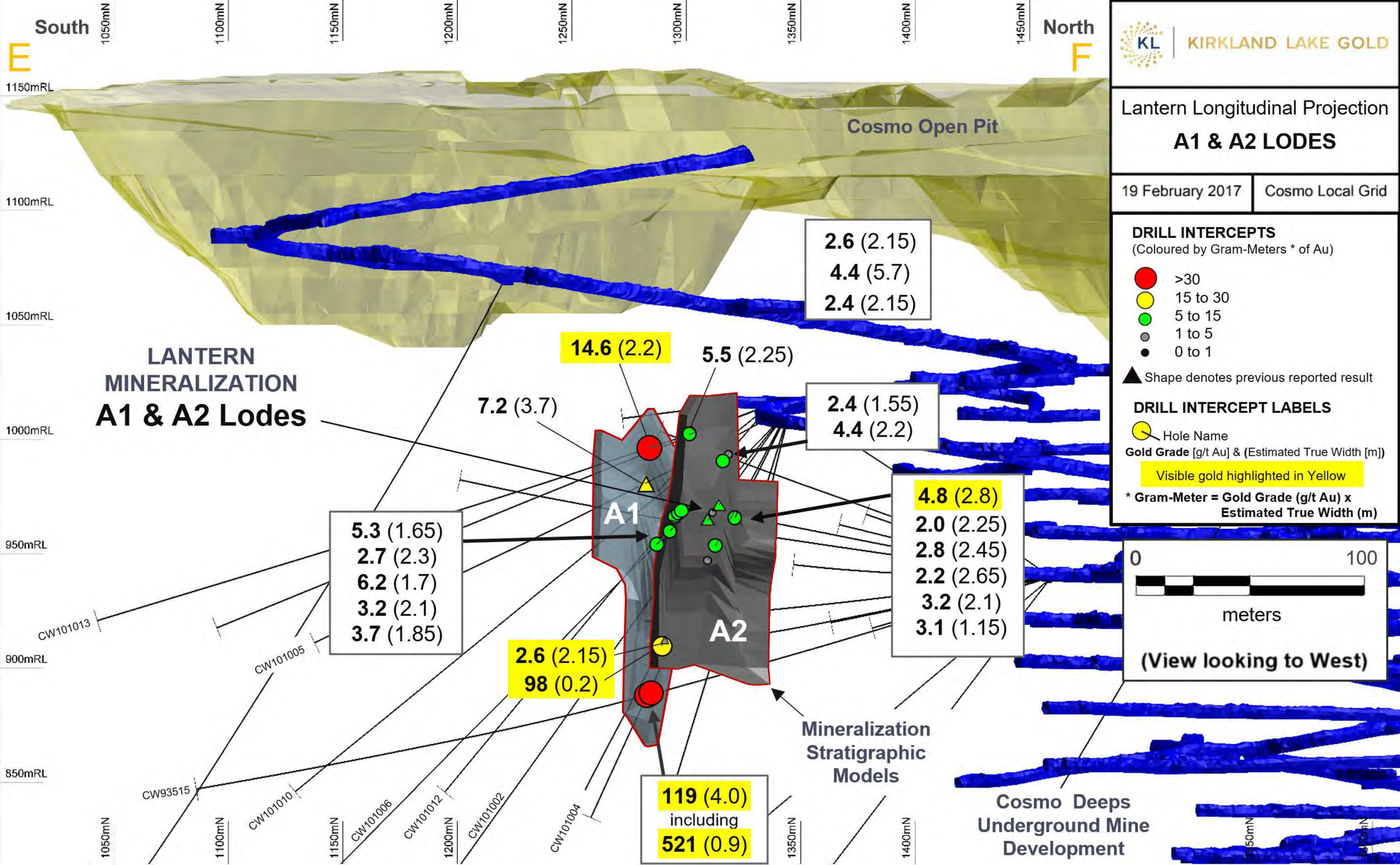
1600mN

1700mN

1800mN

South

North



Lantern Longitudinal Projection
A1 & A2 LODES

19 February 2017 | Cosmo Local Grid

DRILL INTERCEPTS
(Coloured by Gram-Meters * of Au)

- >30
- 15 to 30
- 5 to 15
- 1 to 5
- 0 to 1

▲ Shape denotes previous reported result

DRILL INTERCEPT LABELS


○ Hole Name

Gold Grade [g/t Au] & (Estimated True Width [m])

Visible gold highlighted in Yellow

* Gram-Meter = Gold Grade (g/t Au) x Estimated True Width (m)

0 100



meters

(View looking to West)

Cosmo Open Pit

**LANTERN
MINERALIZATION
A1 & A2 Lodes**

2.6 (2.15)
 4.4 (5.7)
 2.4 (2.15)

14.6 (2.2) 5.5 (2.25)

2.4 (1.55)
 4.4 (2.2)

4.8 (2.8)
 2.0 (2.25)
 2.8 (2.45)
 2.2 (2.65)
 3.2 (2.1)
 3.1 (1.15)

5.3 (1.65)
 2.7 (2.3)
 6.2 (1.7)
 3.2 (2.1)
 3.7 (1.85)

2.6 (2.15)
 98 (0.2)

119 (4.0)
 including
 521 (0.9)

**Mineralization
Stratigraphic
Models**

**Cosmo Deeps
Underground Mine
Development**

South E

North F

1150mRL
 1100mRL
 1050mRL
 1000mRL
 950mRL
 900mRL
 850mRL

1050mN | 1100mN | 1150mN | 1200mN | 1250mN | 1300mN | 1350mN | 1400mN

CW101013 | CW101005 | CW101010 | CW101006 | CW101012 | CW101002 | CW101004 | CW93515