

Torq Claims: 120,000 ha

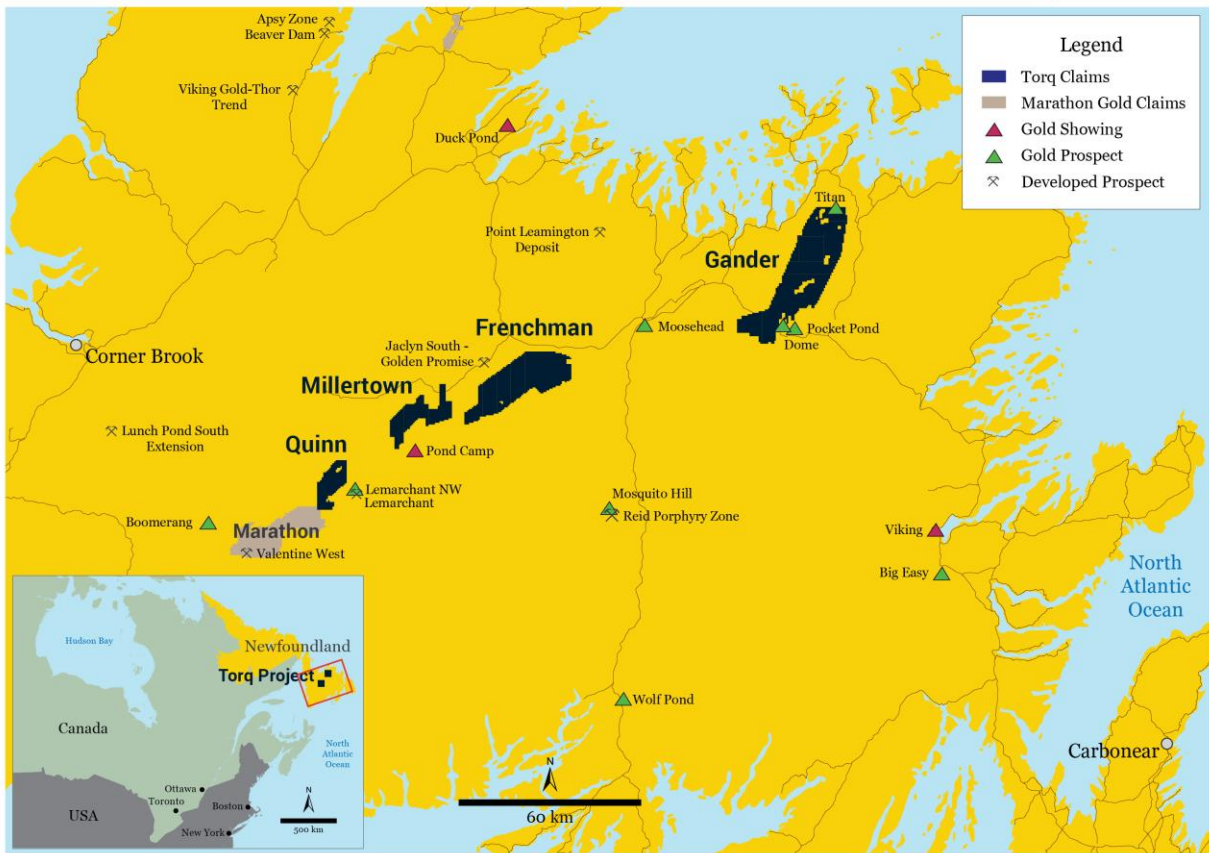
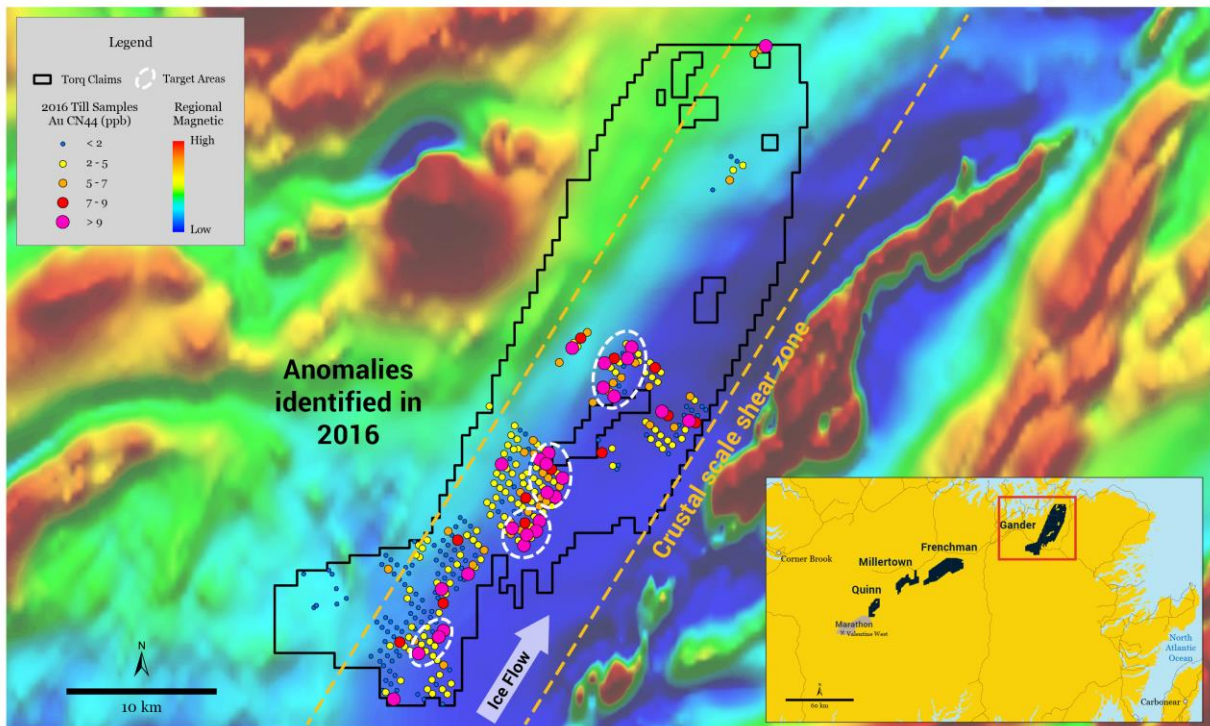


Figure 1: Illustrates the position of Torq's 120,000 hectare land position in central and eastern Newfoundland. The Gander Block is targeting high grade gold vein mineralization and the Quinn, Millertown, and Frenchman Blocks are targeting bulk tonnage style gold mineralization.

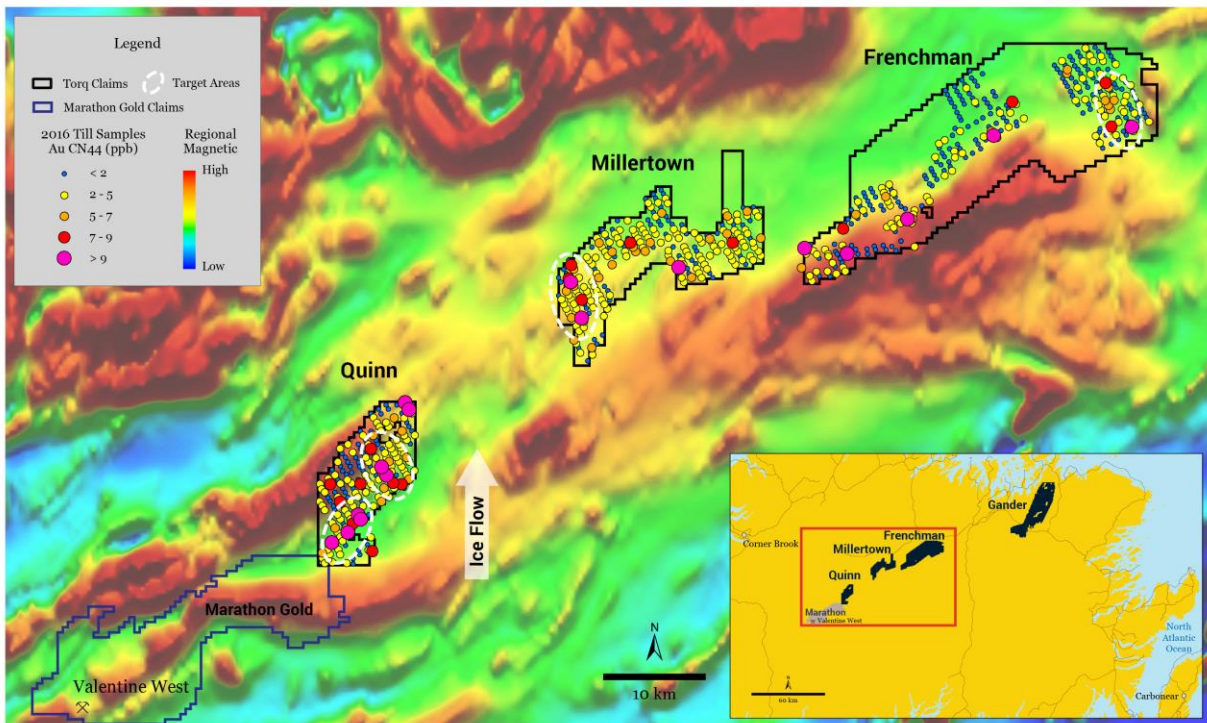
Gander Block: 4 New Gold Anomalies



- Complete first pass regional till sampling program - 1,000 samples (Nov - Dec 2016)
- Complete infill sampling on the first 8 robust anomalies identified - 2,000 samples (Jun 2017)

Figure 2: Illustrates the location of five newly identified gold in till anomalies within a crustal scale structural corridor. These results represent only 15% of the area of the Gander Block with the remaining 85% to be sampled during June of 2017.

Quinn, Millertown & Frenchman Blocks



- Complete first pass regional till sampling program - 1,000 samples (Nov - Dec 2016)
- Complete infill sampling on the first 8 robust anomalies identified - 2,000 samples (Jun 2017)

Figure 3: Illustrates the location of gold in till anomalies from the Quinn, Millertown, and Frenchman Blocks within central Newfoundland. Torq plans to conduct infill sampling on these anomalies to identify potential source areas of gold mineralization and advance these targets toward drill stage by conducting additional surface work in Q3 and Q4 of 2017.