

W

SECTION 1.989.865-N

E

1200m

1100m

1000m

900m

800m

700m

1200m

1100m

1000m

900m

800m

SST-01
3.5m- 305.5 g/t Au-1,6% Cu

SST-39
3.5m- 4.1 g/t Au-0,7% Cu

SST-49
6.2m- 16.1 g/t Au-2,1% Cu

SST-19
3.5m- 162.2 g/t Au-0,0% Cu

SST-53
13.9m- 8.7 g/t Au-0,3% Cu

SST-21
3.5m- 1.0 g/t Au-0,2% Cu

SST-49
9.7m- 39.1 g/t Au-0,1% Cu

SST-01
3.5m- 13.4 g/t Au-0,1% Cu

SST-39
6.4m- 3.7 g/t Au-0,2% Cu

SST-08
3.5m- 11.5 g/t Au-0,8% Cu

SST-53
3.5m- 32.0 g/t Au-0,0% Cu

SST-53
4.8m- 23.4 g/t Au-0,1% Cu

SST-54
8.4m- 13.3 g/t Au-3,6% Cu

SST-06
3.7m- 26.7 g/t Au-0,2% Cu

SST-08
4.1m- 10.3 g/t Au-2,3% Cu

SST-54
11.9m- 9.2 g/t Au-3,1% Cu

SST-32
3.7m- 19.9 g/t Au-0,1% Cu

SST-54
13.0m- 32.1 g/t Au-0,4% Cu

SST-08
9.4m- 5.5 g/t Au-1,1% Cu

SST-19
3.5m- 58.4 g/t Au-0,7% Cu

SST-88
3.6m- 2.9 g/t Au-0,2% Cu

SST-88
3.6m- 2.6 g/t Au-0,2% Cu

SST-88
3.6m- 11.6 g/t Au-0,0% Cu

SST-01
3.8m- 7.4 g/t Au-0,1% Cu

SST-04
3.5m- 1.1 g/t Au-0,6% Cu

SST-36
10.6m- 9.1 g/t Au-3,4% Cu

Legend

Lithology

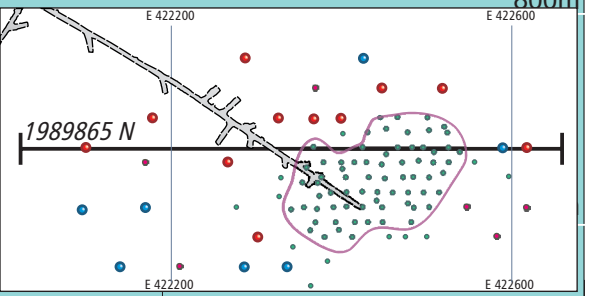
- Gravels
- Exoskarn
- Endoskarn
- FBHQ
- Granodiorite
- Hornfels
- Marble/Limestone

2017 Infill drill holes

Step-Out drill holes

2016 drill holes

Reported Intercepts



422100 422300 422500 422700 422900