

*Fig. 1: Douglas Lake minerals Handeni properties outlined in red with the Kwandege (purple) and Magambazi (blue) target areas diagrammatically indicated.*

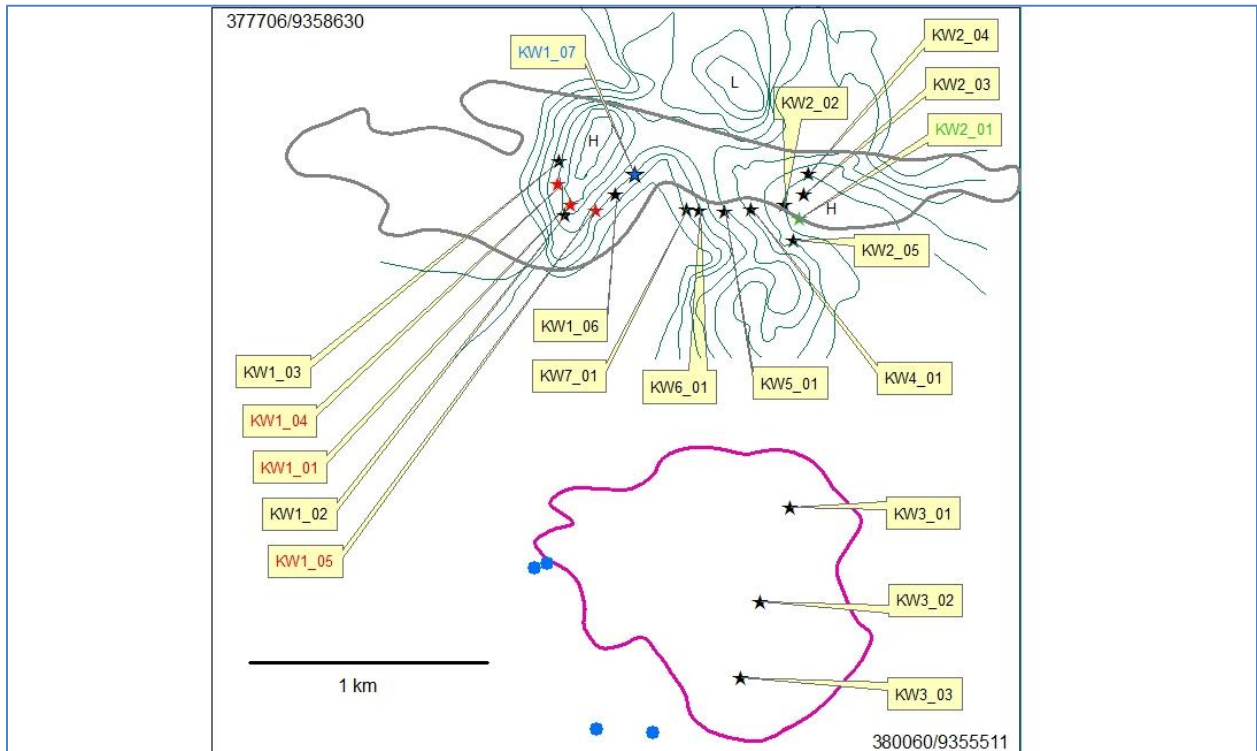


Fig.2: Drill-hole positions at the DLKM Kwandege target. Holes for which gold assay results have been received are represented as red stars. Blue star represents the hole currently being drilled and green star a hole with visible gold in core. Elevation high (H) and lows (L) are indicated as contours, resistivity anomaly (main anomaly) outlined in grey and chargeability anomaly (secondary anomaly) outlined in purple. Current artisanal active areas represented as blue dots.