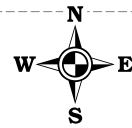
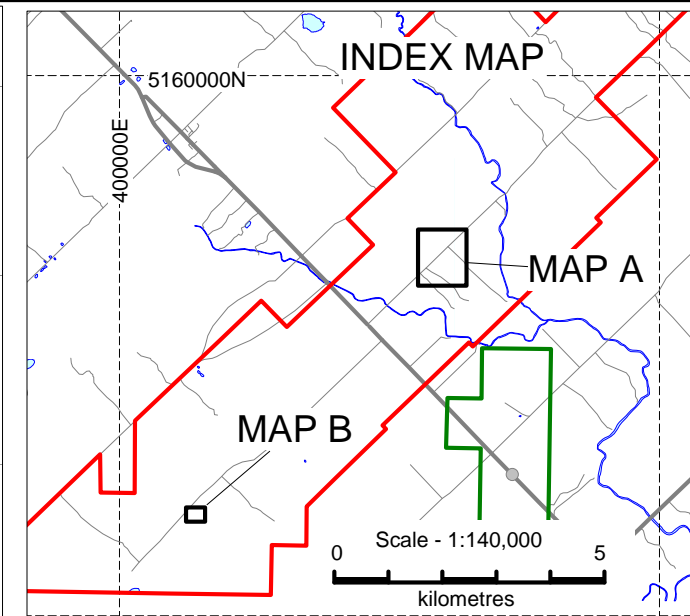
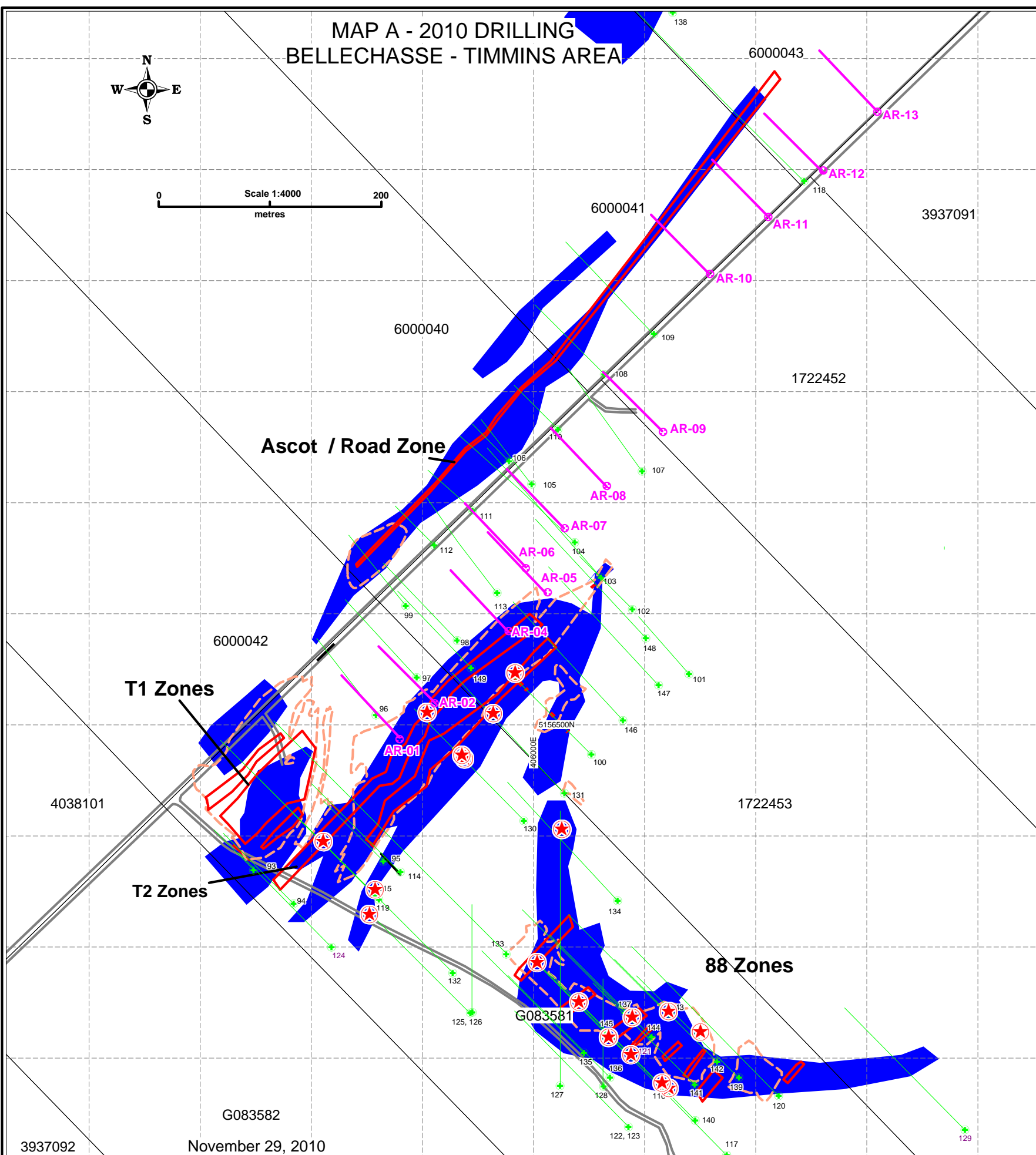


**MAP A - 2010 DRILLING  
BELLECHASSE - TIMMINS AREA**

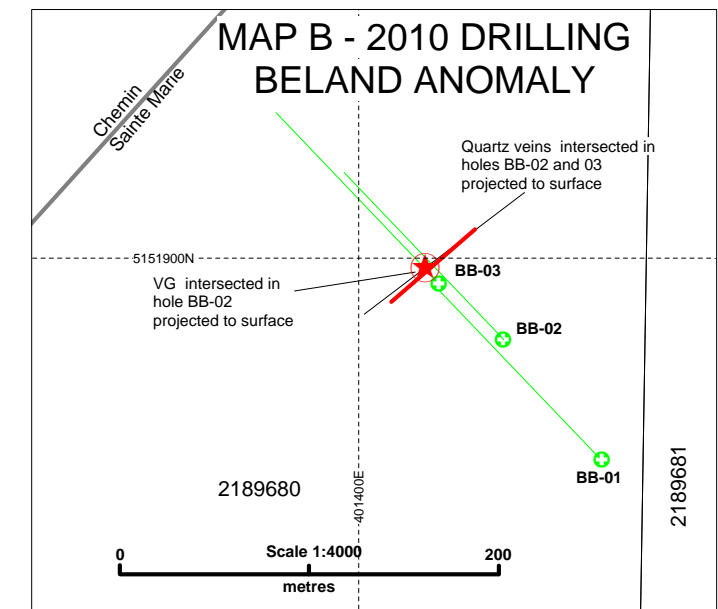


Scale 1:4000  
metres



- Bellechasse - Timmins Claims
- General Golden Hope Mines Limited Claims

Coordinates: U.T.M. NAD83 - Zone 19



- 2010 Drill Holes (numbers prefixed by BD2010)
- Proposed Exploration Drill Holes
- Approximate Limit of Fine to Medium grained Diorite with Quartz Veins (intersected by 2010 Drilling)
- ★ VG (visible gold) Intersected in 2010 Drilling
- Quartz Veins Intersected in 2010 Drilling
- Au Mineralized Zones (projected to surface)
- Limit of Diorite on surface

**Golden Hope Mines Limited  
Bellechasse Project  
Preliminary Compilation  
2010 Drilling  
Bellechasse Timmins Area  
(April 13 to November 29, 2010)**