

Figure 1: Drill hole location map at Namiquipa Silver Project over Google Image

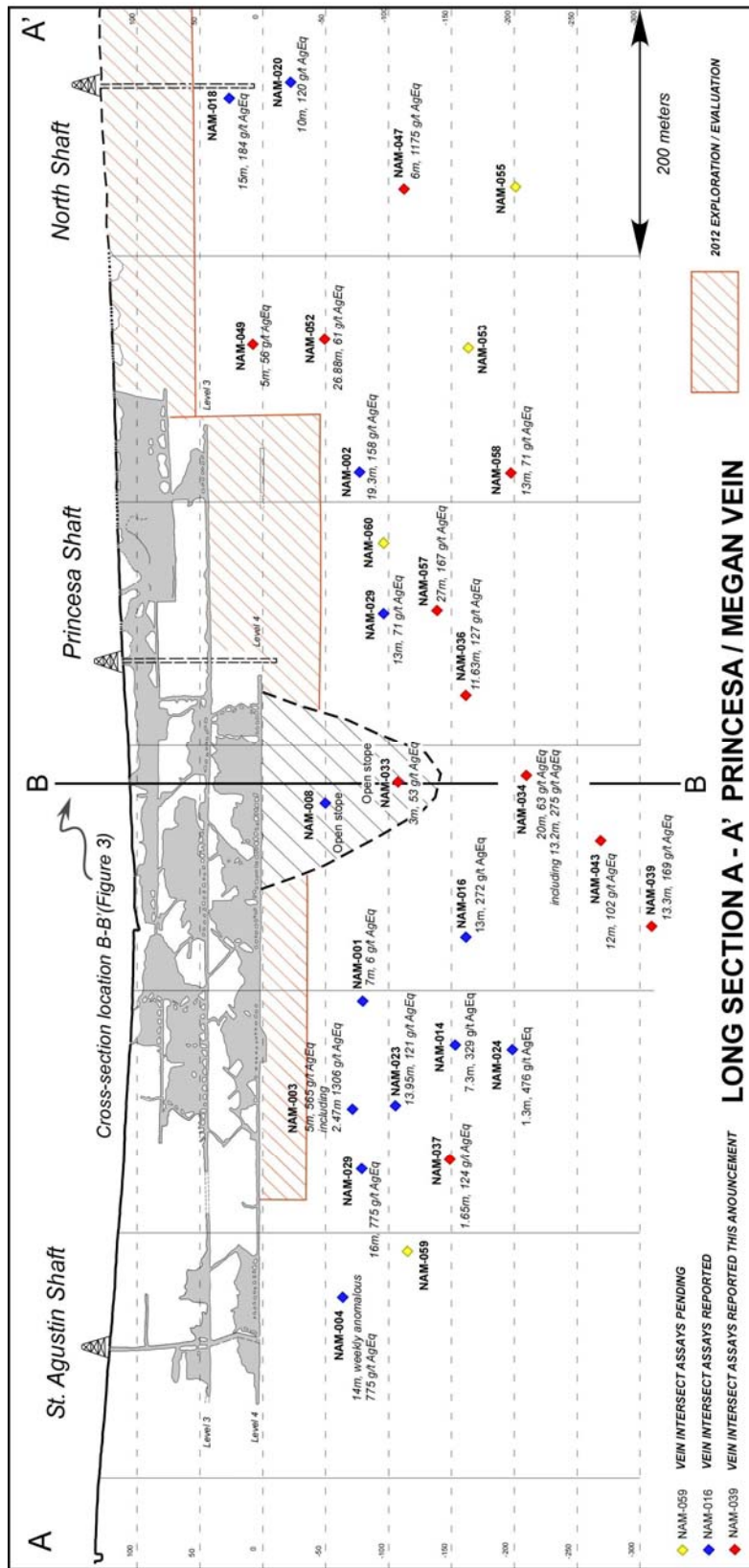


Figure 2: Long Section A-A' (refer Figure 1) Princesa/Megan Vein

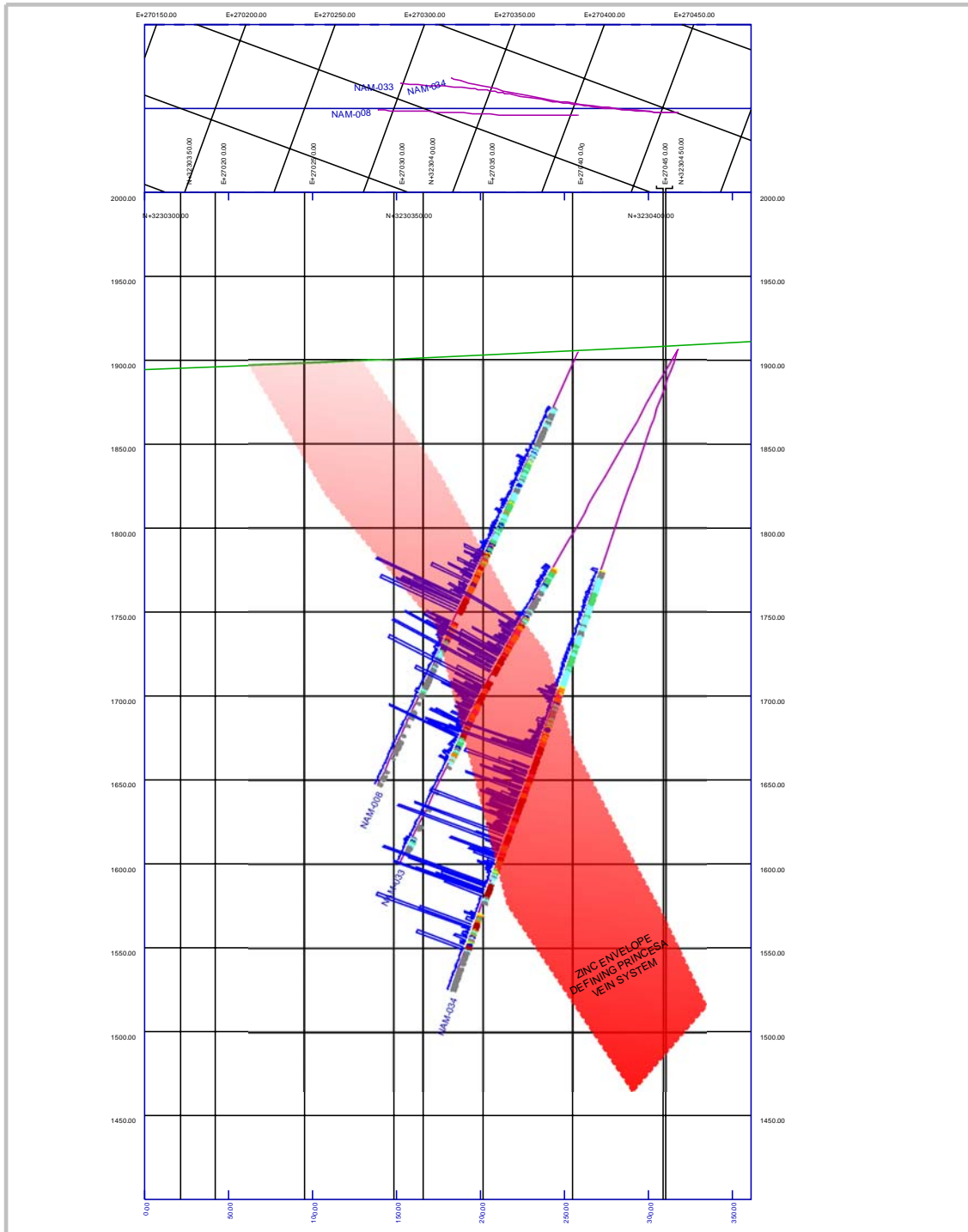


Figure 3: Cross Section B-B' (refer Figure 1) through Princesa/Megan System showing NAM-008, NAM-033 and NAM-034

Table 1: Princesa and Megan Vein Drill Intercepts

HOLE ID	FROM (m)	TO (m)	LENGTH (m)	Ag g/t	PB (%)	ZN (%)	AgEq (g/t)
NAM-033	213.27	213.76	0.49	96.3	2.5	8.92	409
NAM-033	222.8	228.0	5.2	OPEN STOPE			
NAM-033	230.25	233.32	3.07	5.6	0.64	1.11	53
NAM-034	140.0	141.0	1.0	135	.02	.05	136
NAM-034	252.48	252.98	0.5	8.2	1.32	2.31	107
NAM-034	257.0	268.4	11.4	19.1	0.73	2.17	98
NAM-034	290.0	310.9	20.9	35.7	0.22	0.79	63
including	309.58	310.9	1.32	49.3	0.41	7.85	275
NAM-034	344.0	346.5	2.5	5.6	0.65	0.83	46
NAM-034	362.58	366.86	4.28	55.6	0.39	1.05	95
including	365.56	366.86	1.30	169	0.17	0.84	195
NAM-034	377.15	378.5	1.35	15.1	3.66	2.75	190
NAM-036	236.9	237.15	.25	49.8	14.65	6.19	621
NAM-036	243.37	255.0	11.63	20.5	1.13	2.78	127
NAM-036	270.45	273.95	3.5	12.5	2.40	2.54	148
including	244.3	245.45	1.15	109	4.12	8.37	451
NAM-036	330.46	343.0	12.54	10.9	1.24	3.06	129
NAM-036	365.0	366.00	1.0	50.1	1.16	0.68	100
NAM-037	320.0	321.0	1.0	9.0	0.85	2.44	99
NAM-037	339.35	341.0	1.65	32.2	0.63	1.34	124
NAM-039	376.73	390.05	13.32	27.2	2.18	3.00	169
including	376.73	377.14	0.41	50.6	13.55	1.6	465
including	388.00	388.58	0.58	53.02	6.53	18.65	743
including	389.12	390.05	0.93	305.0	19.0	23.60	1473
NAM-043	343.0	354.0	12.0	7.16	1.00	2.48	102
including	349.50	350.50	1.0	25.6	4.41	10.20	426
NAM-047	163.00	169.00	6.0	1,133	0.51	1.02	1,175
including	163.00	164.0	1.0	652	.05	0.15	657
including	164.00	164.59	0.59	294	0.04	0.19	300
including	164.59	166.00	1.41	3,540	1.02	1.43	3,607
including	166.00	166.50	0.5	371	0.17	1.54	417
including	166.50	167.00	0.5	843	1.08	3.17	959
including	167.00	167.64	0.64	420	0.91	1.65	489
NAM-047	177.00	191.00	14.00	22.2	0.37	0.75	52
NAM-047	202.00	220.6	18.60	44.98	1.14	1.86	127
including	212.70	213.47	0.77	183.0	0.20	0.39	199

<i>including</i>	214.00	215.00	1.0	227.0	0.33	0.61	252.83
<i>including</i>	216.10	217.10	1.0	197.00	9.54	7.28	658.22
<i>including</i>	219.90	220.60	0.70	62.4	1.90	10.80	410
NAM-049	102.00	107.00	5.0	44.03	0.29	0.13	56
NAM-052*	156.00	182.88	26.88	54.14	0.07	.019	61
NAM-057	231.00	234.00	3.00	193.45	2.84	9.99	545
<i>Including</i>	233.00	234.00	1.00	401.0	0.07	0.11	405
NAM-057	281.00	284.00	3.00	6.03	0.96	0.78	54
NAM-057	332.00	359.00	27.00	20.57	1.34	4.03	167
<i>Including</i>	339.00	340.00	1.00	142.00	2.56	9.71	478
<i>Including</i>	344.00	344.42	0.42	139.00	5.10	12.30	616
NAM-058	283.00	296.00	13.00	6.63	0.81	1.56	71
NAM-058	320.00	326.00	6.00	7.8	1.00	1.31	79
NAM-058	344.90	347.00	2.10	5.62	0.52	1.73	67

The Silver equivalent grades ("AgEq") have been calculated using metal prices of US\$25oz Silver; US\$1.00/lb Zinc; and US\$1.00/lb Lead. Metal recoveries are not considered in this calculation. Further drilling is required to provide a more accurate assessment of vein thickness and true width may vary.

NAM-052 Intersected workings at 167m core was reduced to NQ however the hole had to be terminated because of strongly broken rock which also resulted in low core recovery between 162 to 182.88m. NAM-057 was drilled below NAM-052 and was successful in intersecting target zone.