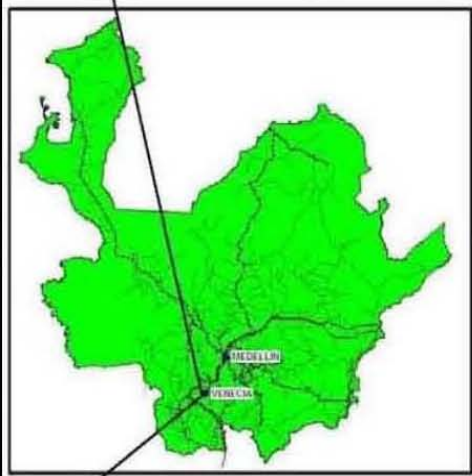
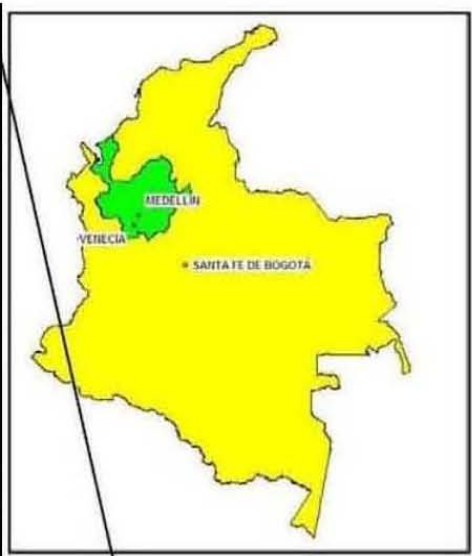
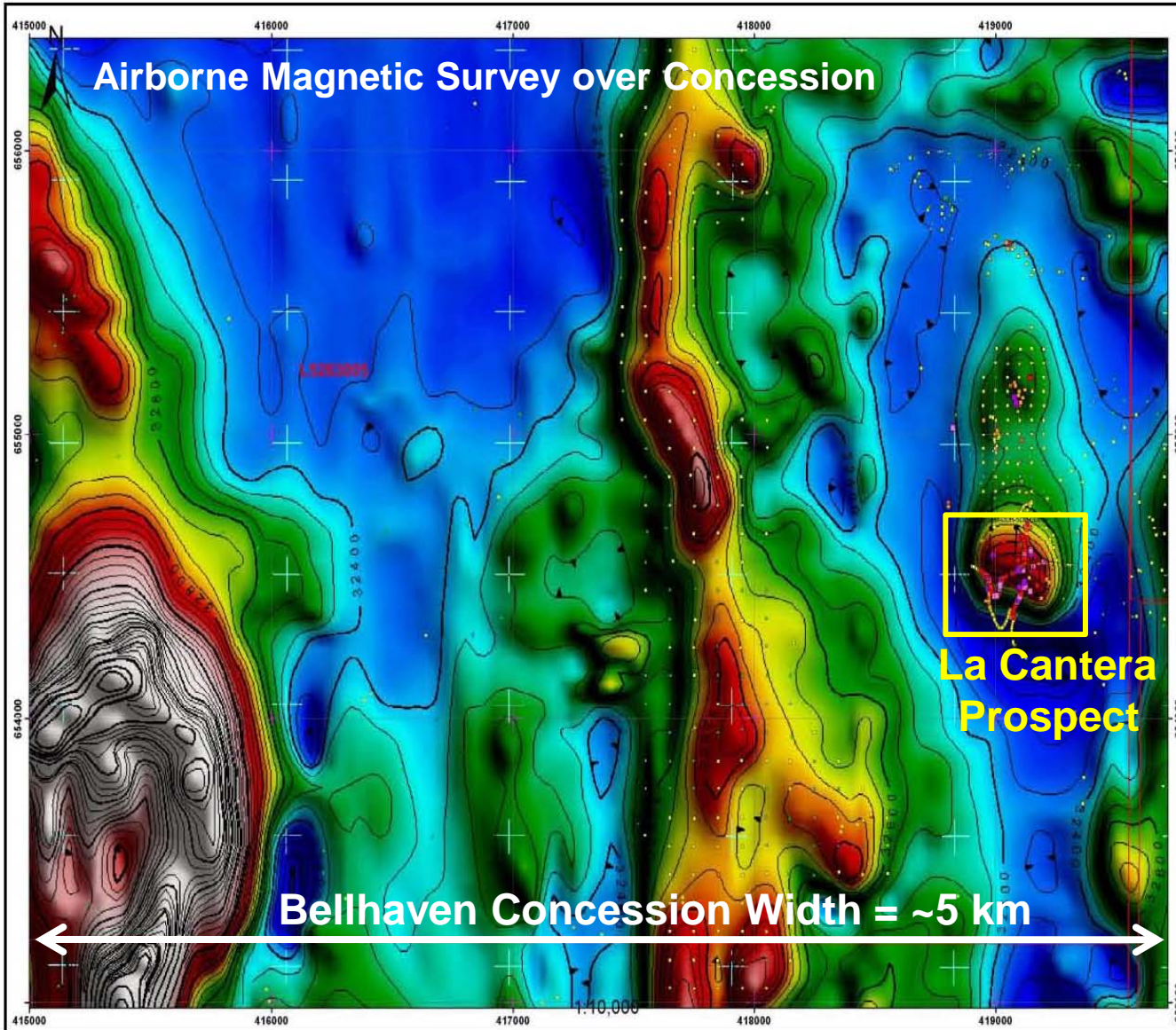




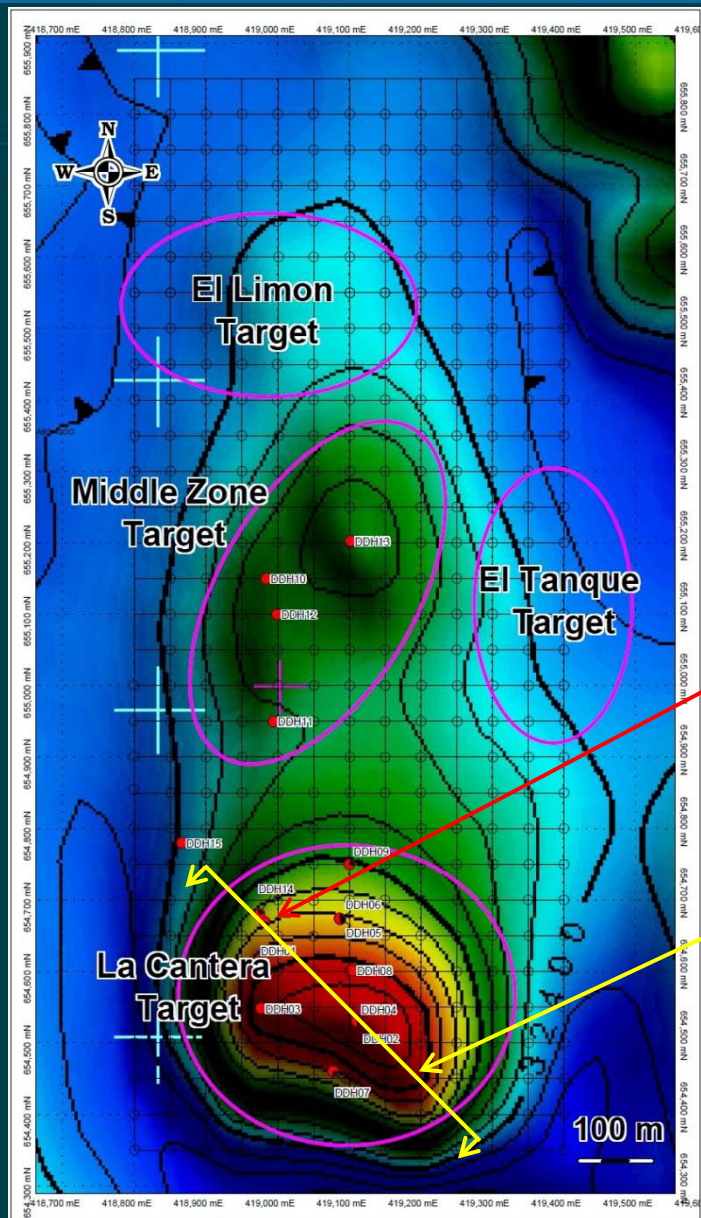
# La Mina—Location & Concession Maps



LOCATION MAP



# La Mina – Drill-Hole Location Map



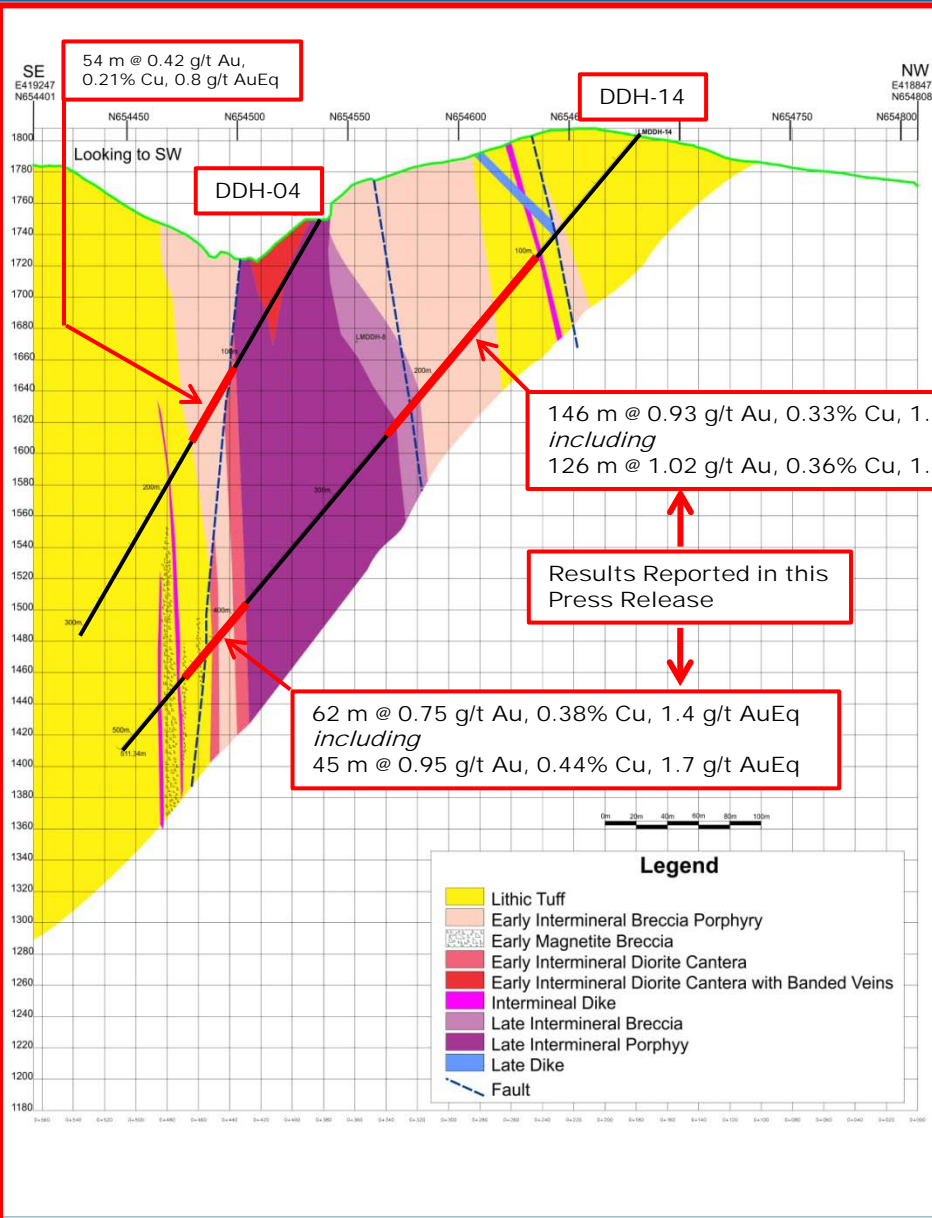
Airborne Magnetic Survey Map Showing the Locations of the Principal Prospects at La Mina and the 14 Drill Holes Completed to Date.

Location of DDH-14

Trace of Cross Section Over La Cantera Prospect (Cross Section Looking to SW). See Next Slide.



# La Mina – Cross Section (Looking to SW)



Cross section through the La Cantera prospect

Notes:

The second (down-hole) intercept extends known mineralization ~150 m below the intercept contained in DDH-04. The total vertical distance between the low end of the second intercept contained in DDH-14 and the surface is ~300 m.

Both zones shown in DDH-14 are open to depth.

DDH-04 was drilled in 2006 by prior workers. DDH-14 was drilled in 2010 by Bellhaven.