



65 Queen Street West, Suite 800, Toronto, ON, Canada, M5H 2M5

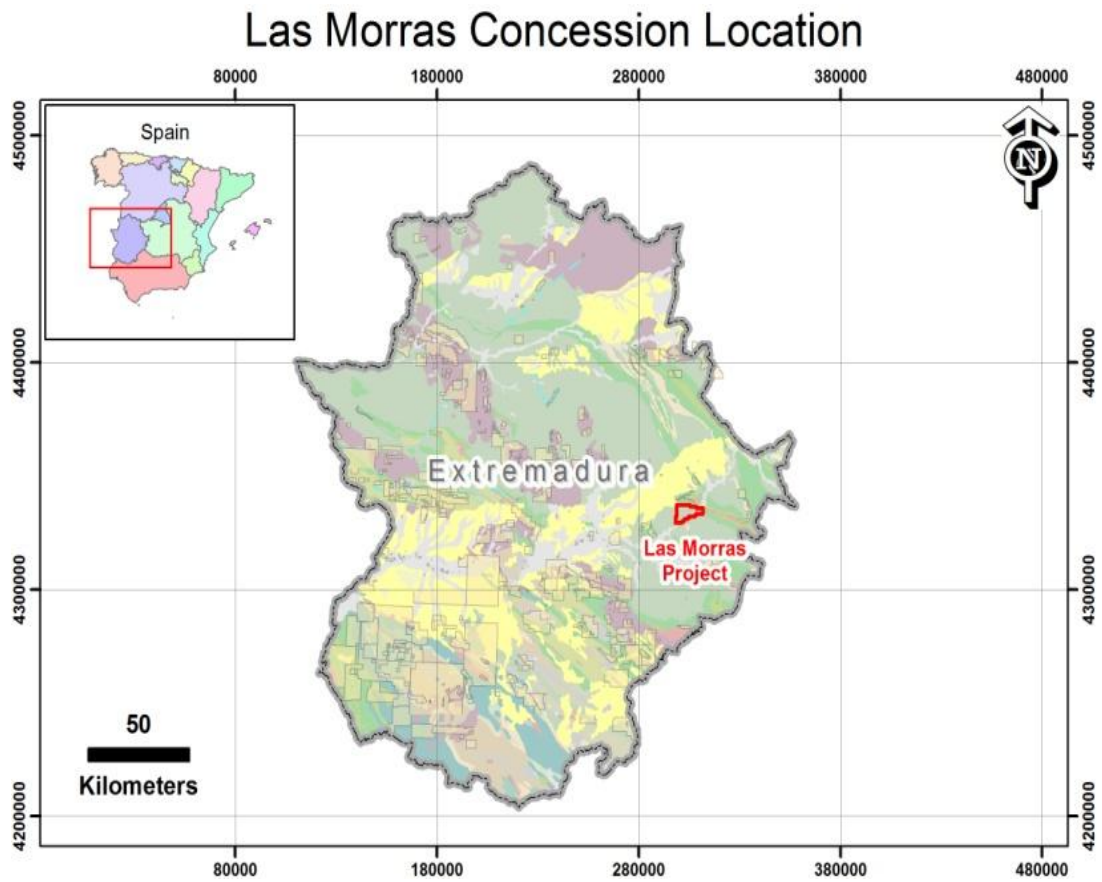


Figure 1: Location Map – Las Morras Property.



65 Queen Street West, Suite 800, Toronto, ON, Canada, M5H 2M5

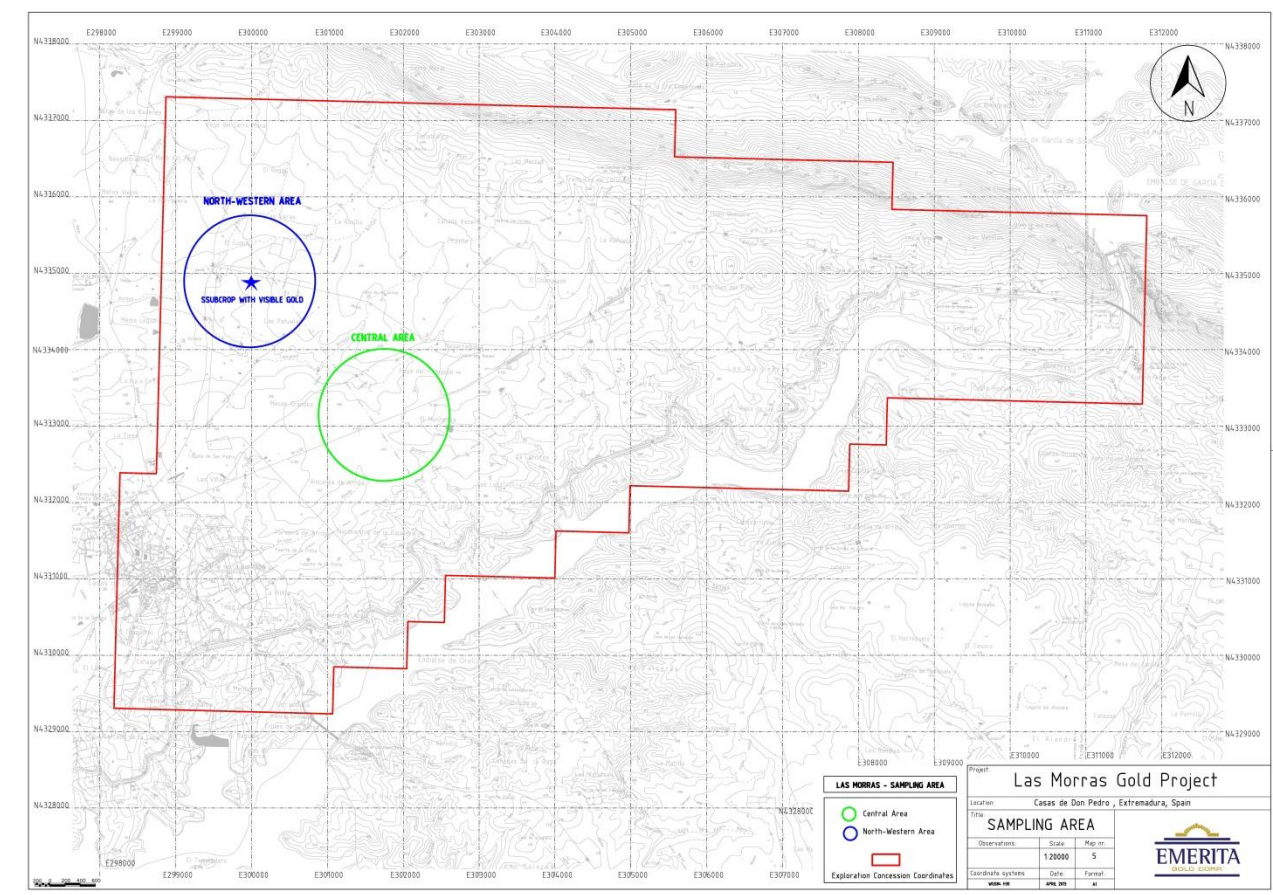


Figure 2: Location map showing the Property boundary and the Central Area from which geochemical survey results have been received by the Company to date and the Northwest Area where visible gold has been identified in suboutcrop and sampling is ongoing.



65 Queen Street West, Suite 800, Toronto, ON, Canada, M5H 2M5

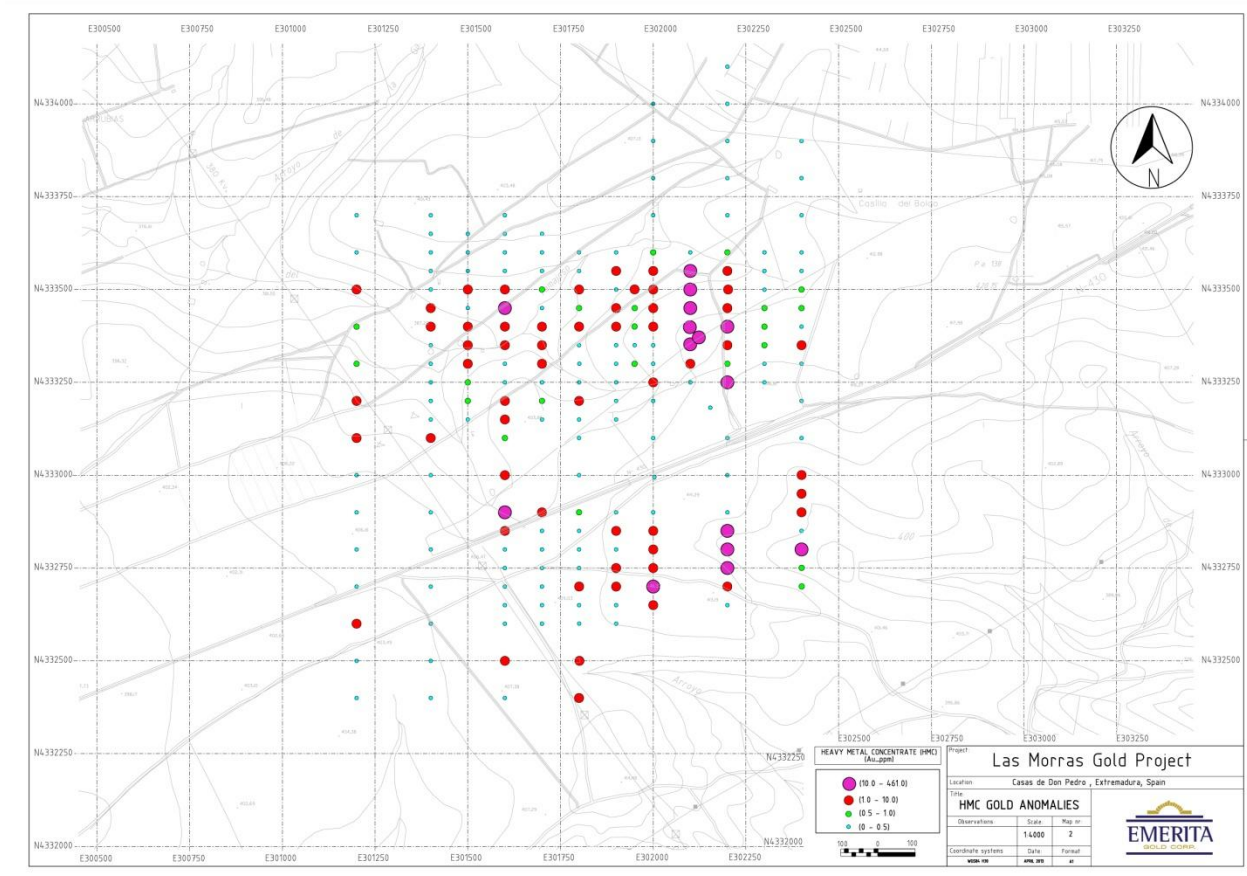


Figure 3: Heavy metal concentrate survey results received to date. Note: two anomalous trends (North and South) approximately 500 meters apart.



65 Queen Street West, Suite 800, Toronto, ON, Canada, M5H 2M5

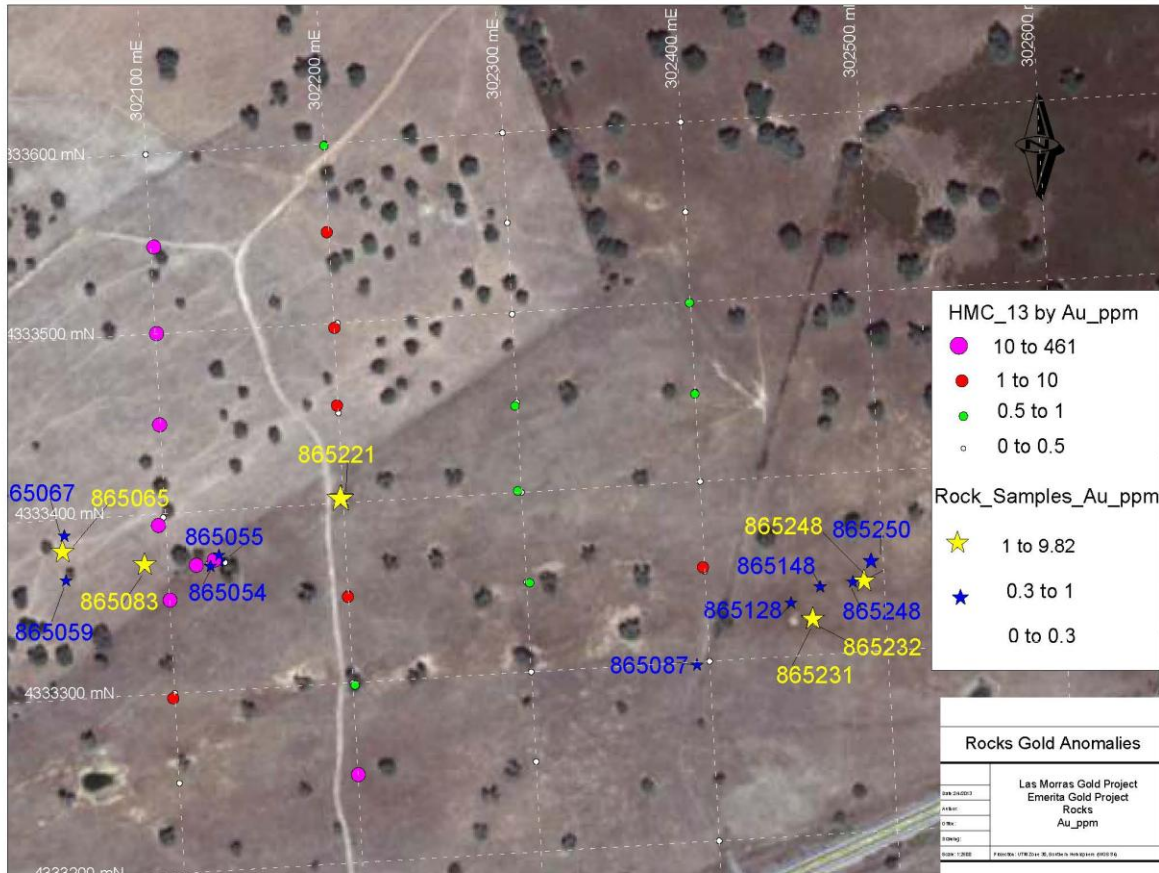


Figure 4: Location of mineralized rock samples referred to in Table 1 above. These are rock chip samples from outcrops from the initial mapping and demonstrate that there is a potential bedrock source for the gold in the soils and the numerous nuggets that have been identified.