

Figure 1

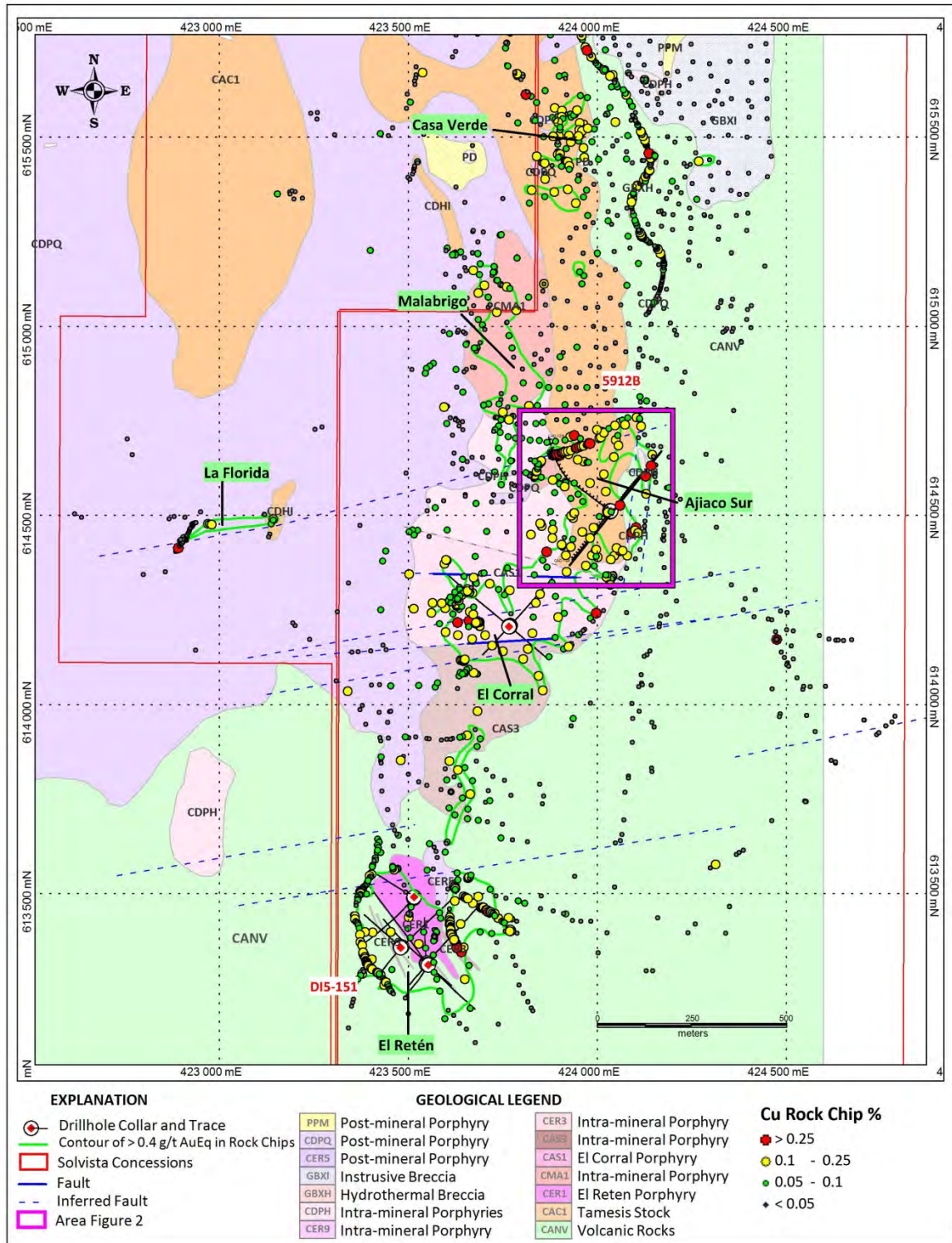


Figure 1: Approximate representation of the Caramanta Porphyry Cluster showing surface traces of all drill holes completed as part of the 8,000 metre, Phase 1 program, as well as interpreted surface geology and rock chip geochemical anomalies. The green lines show the currently defined surface expression of the five drill targets based on a 0.4 g/t AuEq cutoff.

**Figure 2**

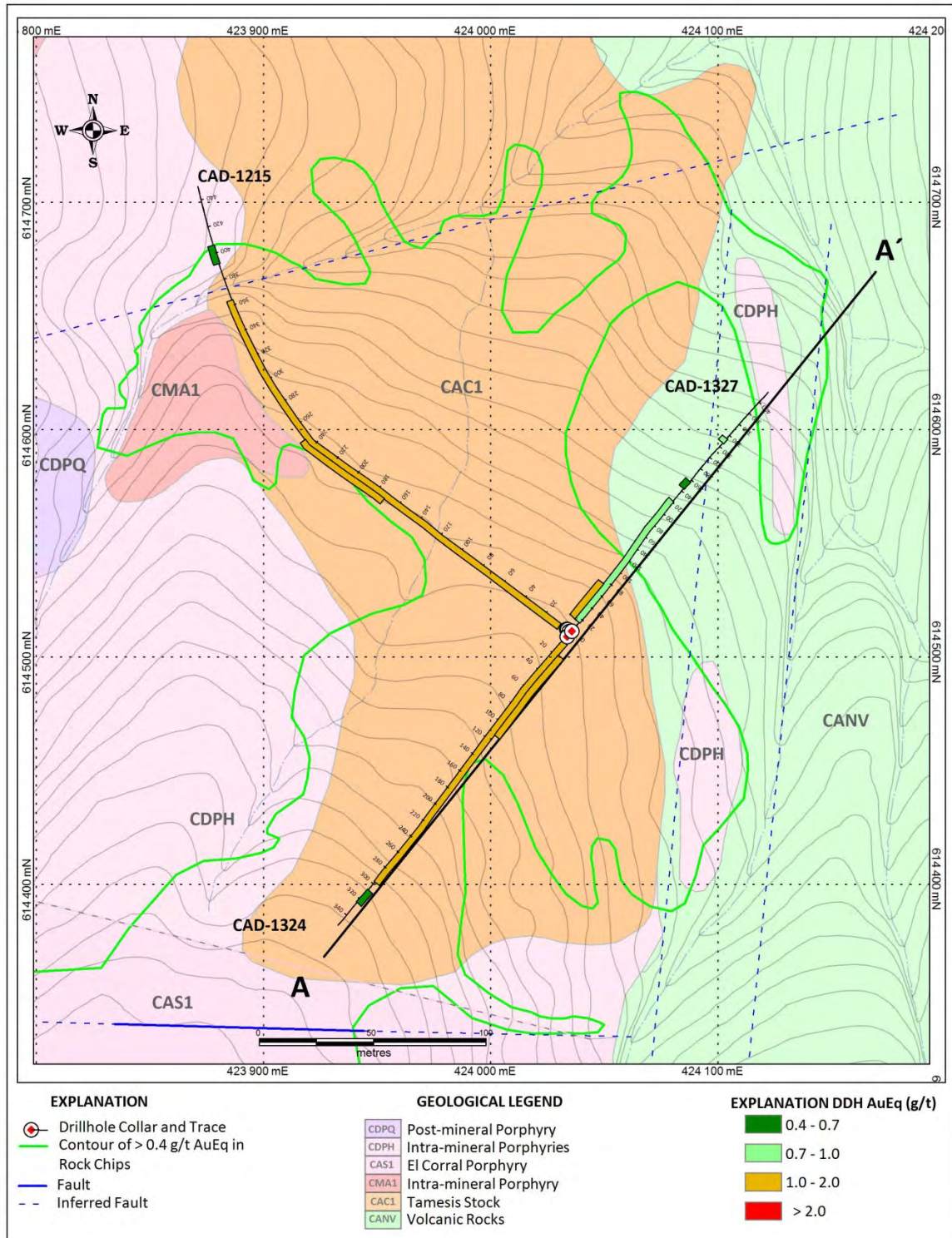


Figure 2: Approximate representation of the Ajiaco Sur target area showing surface traces of all drill holes completed to-date as well as interpreted surface geology and rock-chip geochemical anomalies. The green line shows the surface expression of the Ajiaco Sur anomaly based on a 0.4 g/t AuEq cutoff.



**Figure 3**

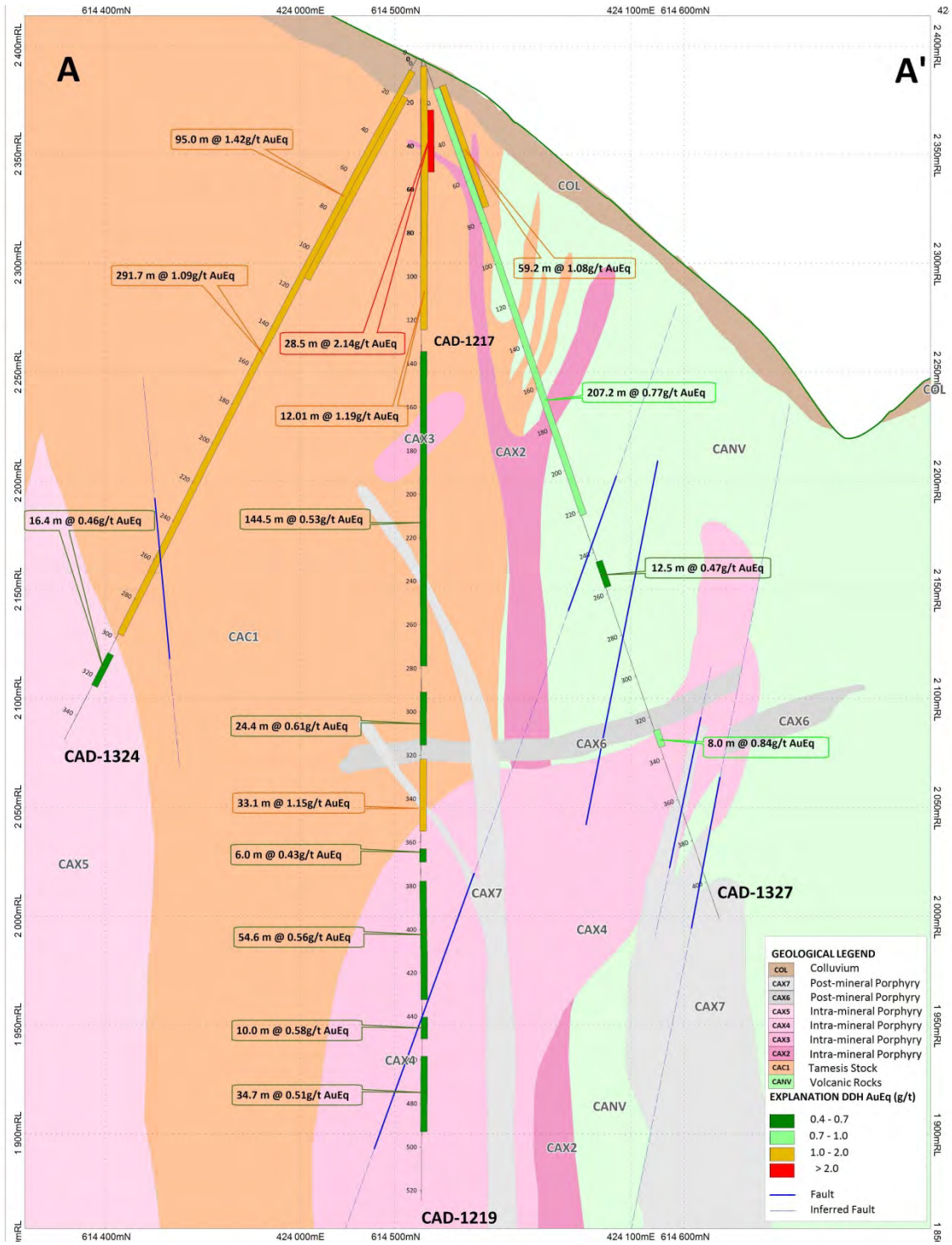


Figure 3: Northeast-southwest cross-section (approximate representation) showing drill holes CAD-1219, CAD-1324, and CAD-1327.