

Anuri Corridor: Refined Targets Defined by Gold Geochemistry, EM Conductors and Magnetic Stratigraphy

- Recently acquired 50m spaced airborne magnetics data shows clear structural control on targets: Shear zones and fold hinges

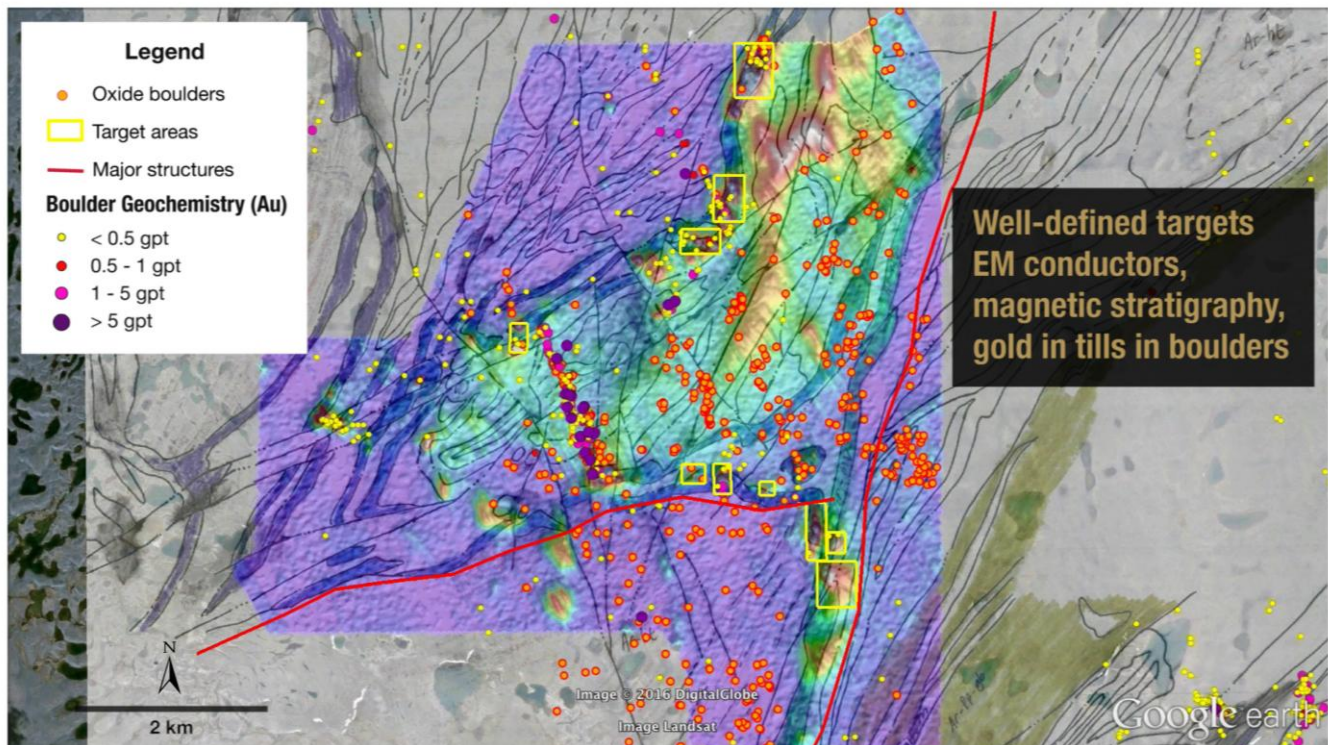


Figure 2: Anuri drill targets based on recently acquired 50-meter line spaced airborne electromagnetic and magnetic data, gold bearing boulder trains, and till geochemistry.