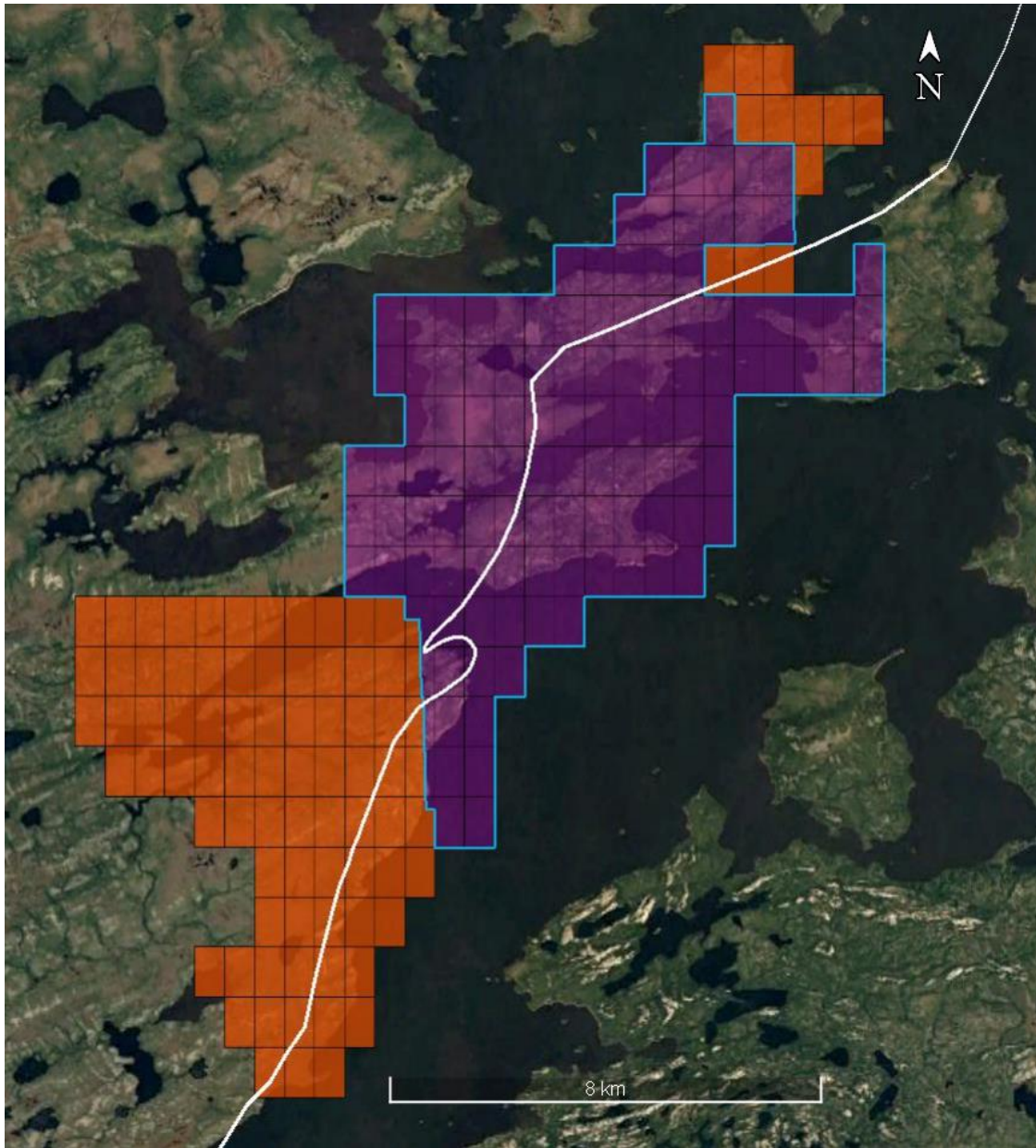


Figure 1: Sakami Property – Claim Cells



- 1- In purple, the 120 claim cells of the Sakami Property at of August 16, 2013, at the signature of the agreement between Matamec Explorations Inc. And Canada Strategic Metals.
- 2- In orange, the 93 additional claim cells titles acquired since August 16, 2013 located within a radius of 5 km and now part of the Sakami property.
- 3- The property covers a major geological contact (white line) between two sub-provinces that are very favourable for hosting gold deposits. This geological setting comprises the Opinaca sediments, the La Grande mafic volcanics, and iron formations in association with a strong deformation zone, notably near the tectonic contact of the La Grande-Opinaca sub-provinces.