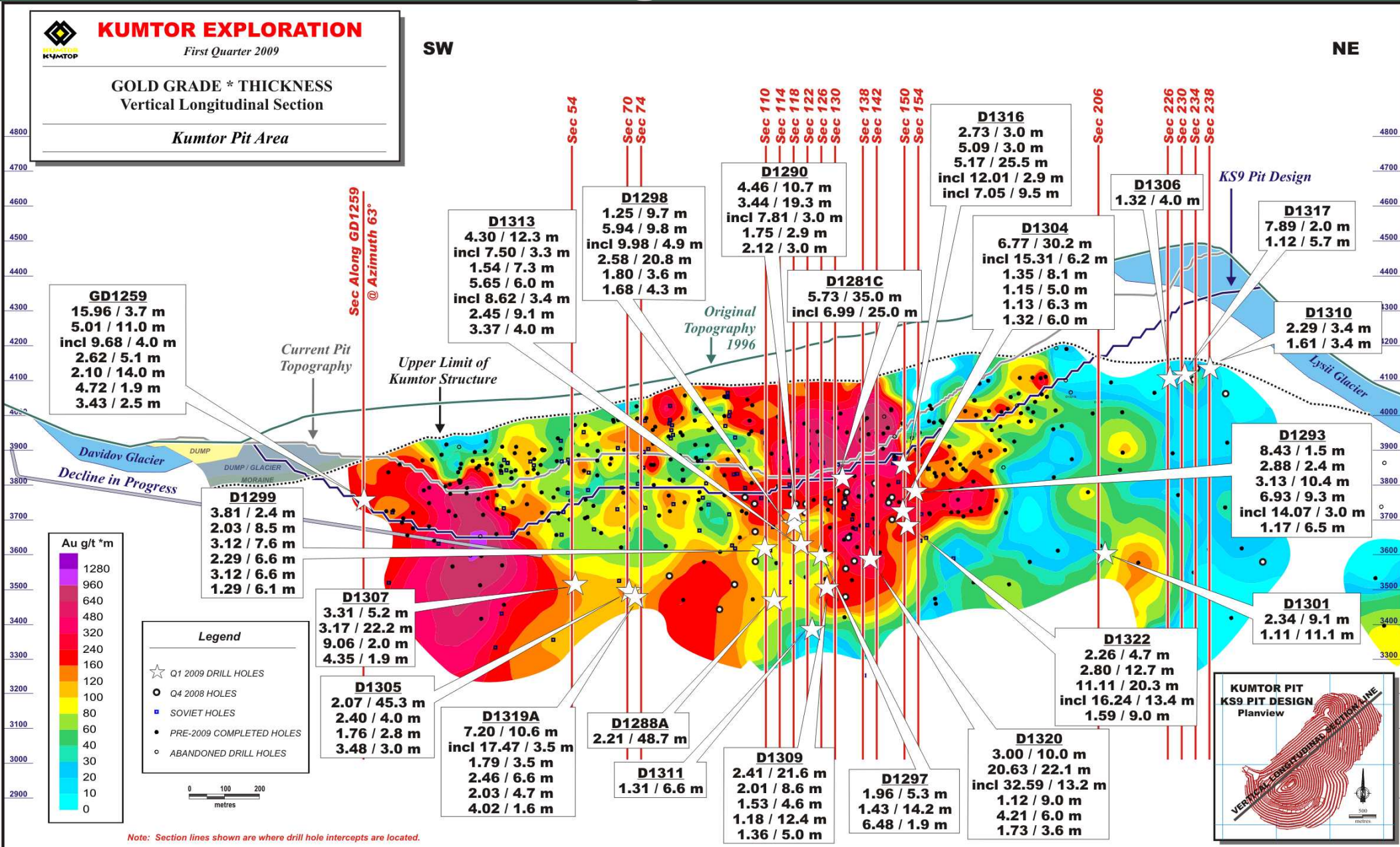


Kumtor Q1 2009 – Au Grade * Thickness Vertical Longitudinal Section





2009 Kumtor Project Drilling Results

Period January 1st to March 31st, 2009

Drill Hole	Location	Drill Hole Collar Location (Section Line)	From (m)	To (m)	Core Length (m)	Au (g/t)	
D1281B	Stockwork Zone	142	<i>Hole was stopped due to technical difficulties before target was reached</i>				
D1281C	Stockwork Zone	142	249.0	284.0	35.00	5.73	
			<i>includes</i>	252.0	277.0	25.00	6.99
D1288A	Stockwork Zone	110	597.2	645.9	48.70	2.21	
D1290	Stockwork Zone	122	337.4	348.1	10.70	4.46	
			<i>includes</i>	355.4	374.7	19.30	3.44
			365.0	368.0	3.00	7.81	
			437.8	440.7	2.90	1.75	
			444.4	447.4	3.00	2.12	
D1293	Stockwork Zone	150	258.6	260.1	1.50	8.43	
			<i>includes</i>	263.8	266.2	2.40	2.88
			270.8	281.2	10.40	3.13	
			287.6	296.9	9.30	6.93	
			289.3	292.3	3.00	14.07	
			325.5	332.0	6.50	1.17	
D1297	Stockwork Zone	126	374.1	379.4	5.30	1.96	
			<i>includes</i>	464.7	478.9	14.20	1.43
			498.7	500.6	1.90	6.48	
D1298	Stockwork Zone	118	344.0	353.7	9.70	1.25	
			<i>includes</i>	362.6	372.4	9.80	5.94
			366.7	371.6	4.90	9.98	
			375.2	396.0	20.80	2.58	
			458.8	462.4	3.60	1.80	
			486.4	490.7	4.30	1.68	
D1299	Stockwork Zone	110	258.8	261.2	2.40	3.81	
			<i>includes</i>	326.5	335.0	8.50	2.03
			342.7	350.3	7.60	3.12	
			374.9	381.5	6.60	2.29	
			387.1	393.7	6.60	3.12	
			451.6	457.7	6.10	1.29	
D1301	Northeast Extension	214	820.9	830.0	9.10	2.34	
			865.0	876.1	11.10	1.11	
D1304	Stockwork Zone	150	268.1	298.3	30.20	6.77	
			<i>includes</i>	269.1	275.3	6.20	15.31
			335.8	343.9	8.10	1.35	
			346.9	351.9	5.00	1.15	
			363.8	370.1	6.30	1.13	
			372.1	378.1	6.00	1.32	
D1305	Saddle Zone	70	402.4	447.7	45.30	2.07	
			<i>includes</i>	519.0	523.0	4.00	2.40
			553.0	555.8	2.80	1.76	
			587.6	590.6	3.00	3.48	
D1306	Northeast Extension	226	93.5	97.5	4.00	1.32	
D1307	Saddle Zone	62	435.2	440.4	5.20	3.31	
			<i>includes</i>	451.1	473.3	22.20	3.17
			496.1	498.1	2.00	9.06	
			590.8	592.7	1.90	4.35	
D1309	Stockwork Zone	126	465.1	486.6	21.55	2.41	
			<i>includes</i>	490.5	499.1	8.60	2.01
			516.9	521.5	4.60	1.53	
			533.6	546.0	12.40	1.18	
			564.0	569.0	5.00	1.36	

Notes: Significant mineralized intervals are greater than 1.00 g/t Au
 Individual assays are top cut to 60 g/t Au prior to composite calculation
 Lower cut-off for higher grade sub-intervals is 7.0 g/t Au
 True widths for mineralized zones are about 40% to 95% of stated down hole interval
 This information should be read together with our news release of April 30st, 2009. Ian Atkinson, a Certified Professional Geologist, is Centerra's qualified person for the purpose of National Instrument 43-101
 Tables are current as of April 01, 2009.



2009 Kumtor Project Drilling Results

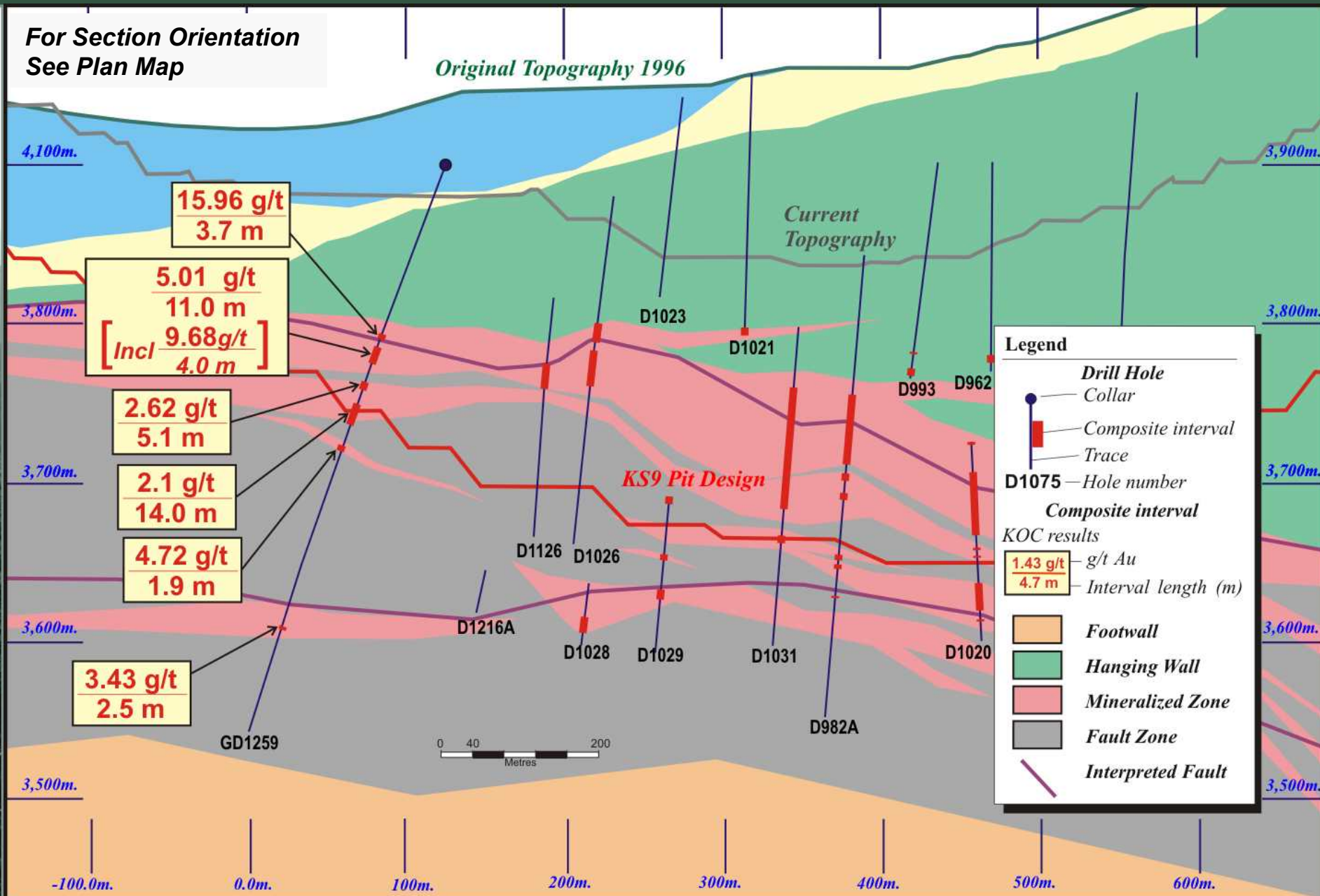
Period January 1st to March 31st, 2009

Drill Hole	Location	Drill Hole Collar Location (Section Line)	From (m)	To (m)	Core Length (m)	Au (g/t)	
D1310	Northeast Extension	238	71.6	75.0	3.40	2.29	
			86.6	90.0	3.40	1.61	
D1311	Stockwork Zone	118	718.0	724.6	6.60	1.31	
D1313	Stockwork Zone	118	371.6	383.9	12.30	4.30	
			<i>includes</i>	373.6	376.9	3.30	7.50
				390.7	398.0	7.30	1.54
				430.9	436.9	6.00	5.65
			<i>includes</i>	433.5	436.9	3.40	8.62
				442.6	451.7	9.10	2.45
			468.0	472.0	4.00	3.37	
D1314	Northeast Extension	222	<i>Hole was stopped due to technical difficulties before target was reached</i>				
D1314A	Northeast Extension	222	<i>Hole was stopped due to technical difficulties before target was reached</i>				
D1316	Stockwork Zone	150	31.3	34.3	3.00	2.73	
				141.0	144.0	3.00	5.09
				220.5	246.0	25.50	5.17
			<i>includes</i>	223.5	226.4	2.90	12.01
	<i>includes</i>	234.0	243.5	9.50	7.05		
D1317	Northeast Extension	226	95.5	97.5	2.00	7.89	
			230.2	235.9	5.70	1.12	
D1319	Saddle Zone	70	<i>Hole was stopped due to technical difficulties before target was reached</i>				
D1319A	Saddle Zone	70	483.5	494.1	10.60	7.20	
			<i>includes</i>	486.5	490.0	3.50	17.47
				511.5	515.0	3.50	1.79
				605.6	612.2	6.60	2.46
				670.1	674.8	4.70	2.03
			763.8	765.4	1.60	4.02	
D1320	Stockwork Zone	142	377.3	387.3	10.00	3.00	
				425.8	447.9	22.10	20.63
			<i>includes</i>	425.8	439.0	13.20	32.59
				461.0	470.0	9.00	1.12
				509.7	515.7	6.00	4.21
			523.7	527.3	3.60	1.73	
D1321	Northeast Extension	198	<i>Hole was stopped due to technical difficulties before target was reached</i>				
D1321A	Northeast Extension	198	<i>Hole was stopped due to technical difficulties before target was reached</i>				
D1321B	Northeast Extension	198	<i>Hole was stopped due to technical difficulties before target was reached</i>				
D1322	Stockwork Zone	150	262.9	267.6	4.70	2.26	
				333.5	346.2	12.70	2.80
				362.8	383.1	20.30	11.11
			<i>includes</i>	363.6	377.0	13.40	16.24
			395.7	404.7	9.00	1.59	
D1323	Stockwork Zone	138	<i>Hole was stopped due to technical difficulties before target was reached</i>				
D1326	Northeast Extension	206	<i>Hole was stopped due to technical difficulties before target was reached</i>				
GD1259	Southwest Extension	-2	114.9	118.6	3.70	15.96	
				123.8	134.8	11.00	5.01
			<i>includes</i>	126.7	130.7	4.00	9.68
				147.1	152.2	5.10	2.62
				161.7	175.7	14.00	2.10
				189.7	191.6	1.90	4.72
			308.5	311.0	2.50	3.43	

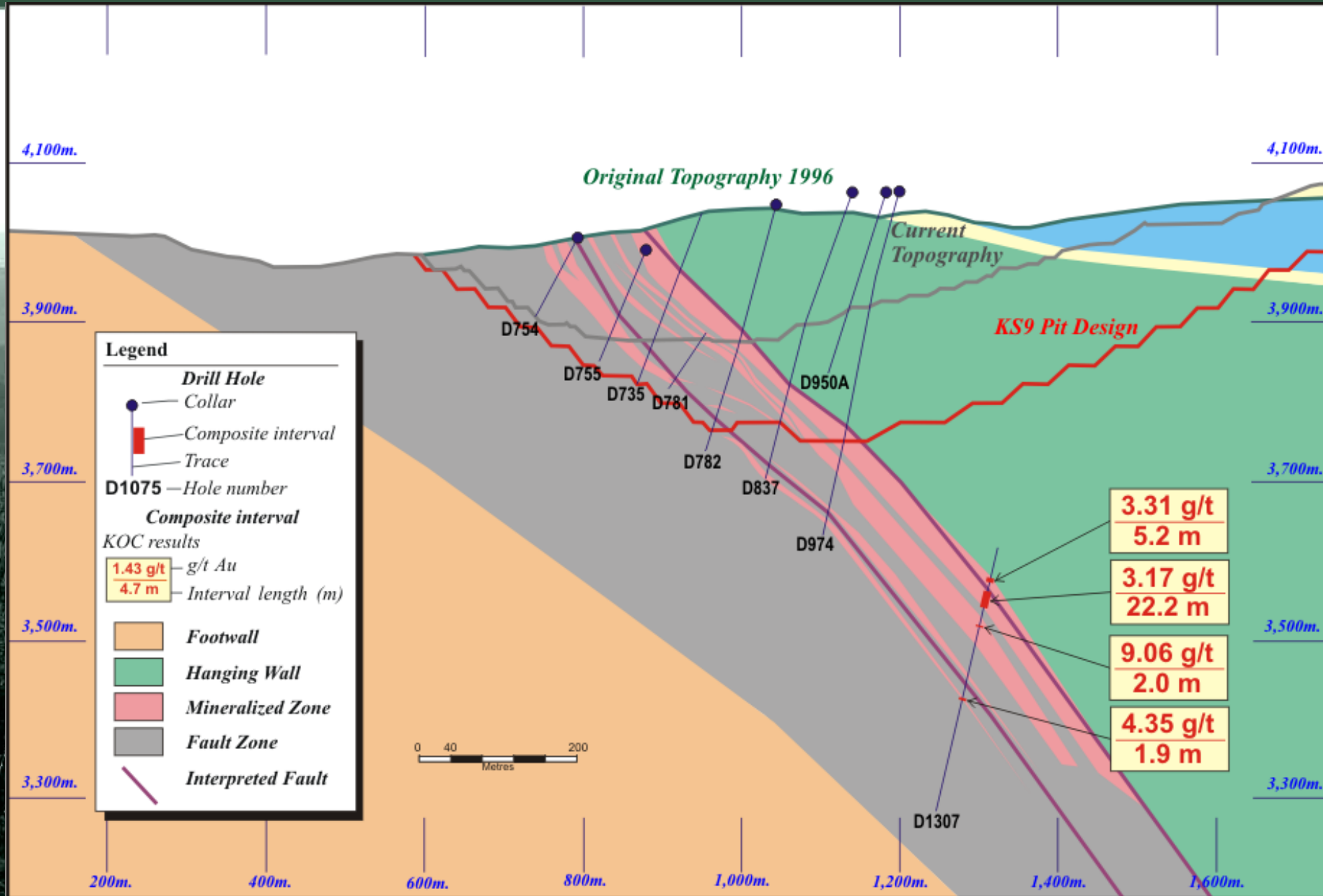
Notes: Significant mineralized intervals are greater than 1.00 g/t Au
 Individual assays are top cut to 60 g/t Au prior to composite calculation
 Lower cut-off for higher grade sub-intervals is 7.0 g/t Au
 True widths for mineralized zones are about 40% to 95% of stated down hole interval
 This information should be read together with our news release of April 30st, 2009. Ian Atkinson, a Certified Professional Geologist, is Centerra's qualified person for the purpose of National Instrument 43-101
 Tables are current as of April 01, 2009.

Kumtor – Section along GD1259

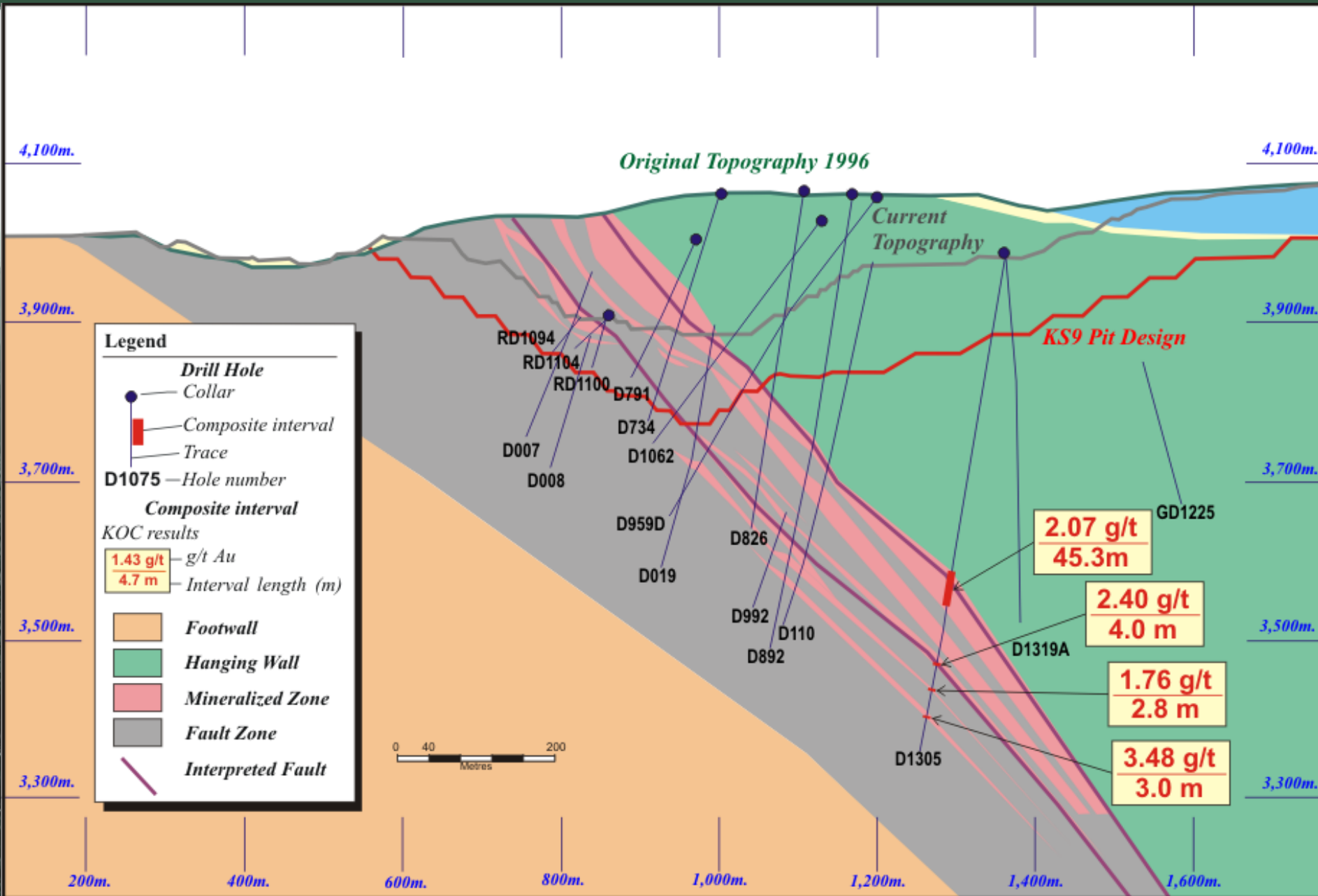
Section at Azimuth 063° - Looking North



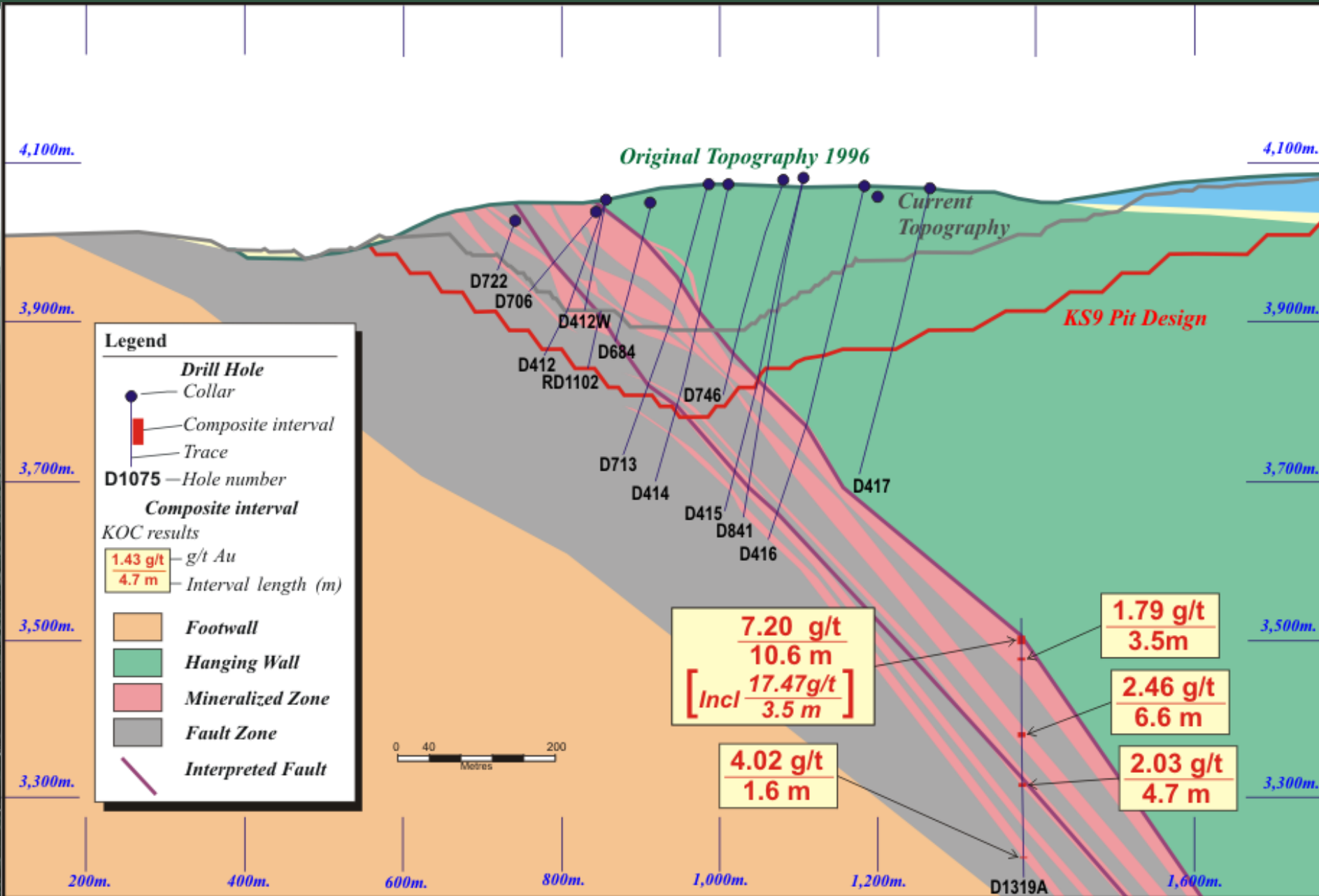
Kumtor – Section 54



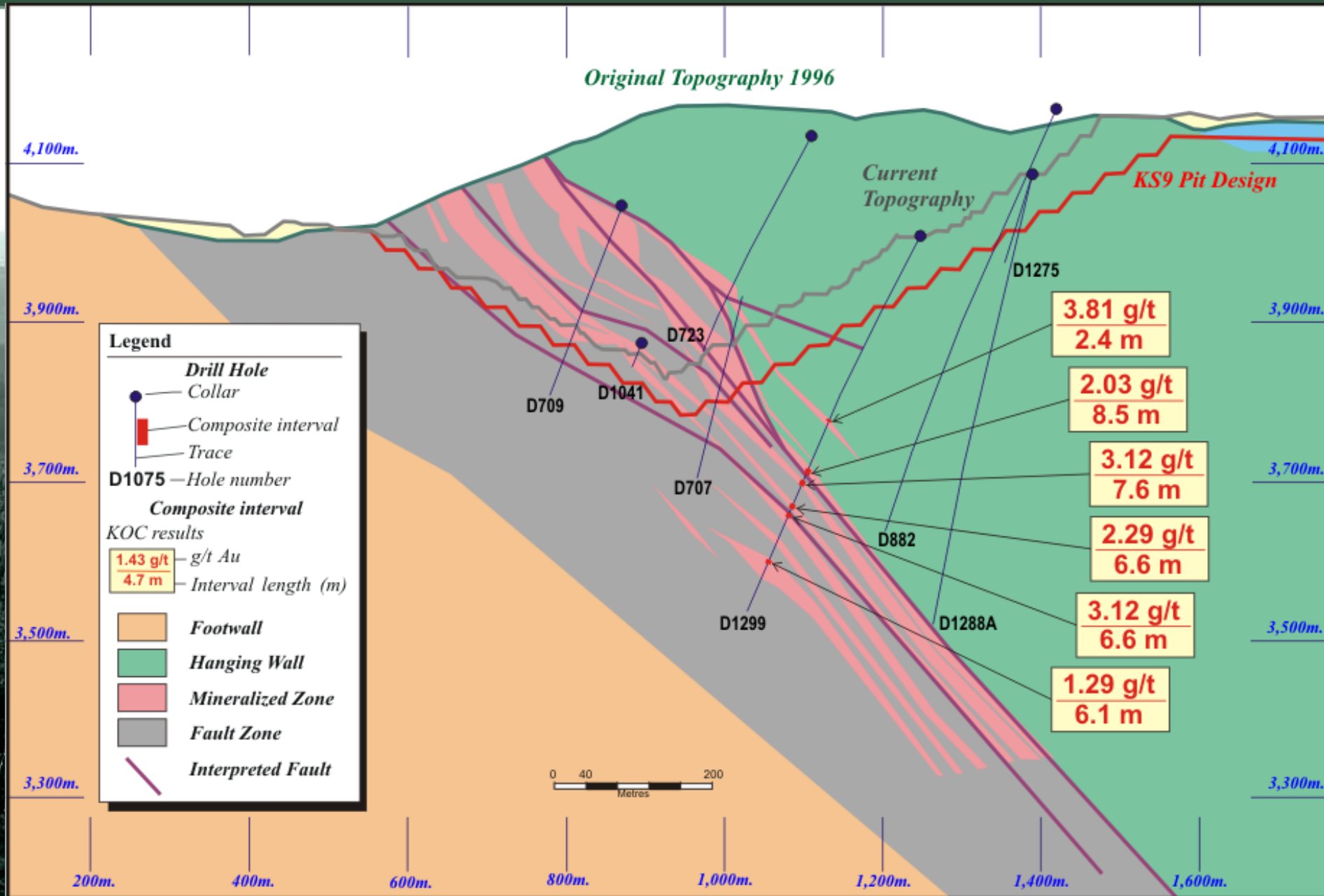
Kumtor – Section 70



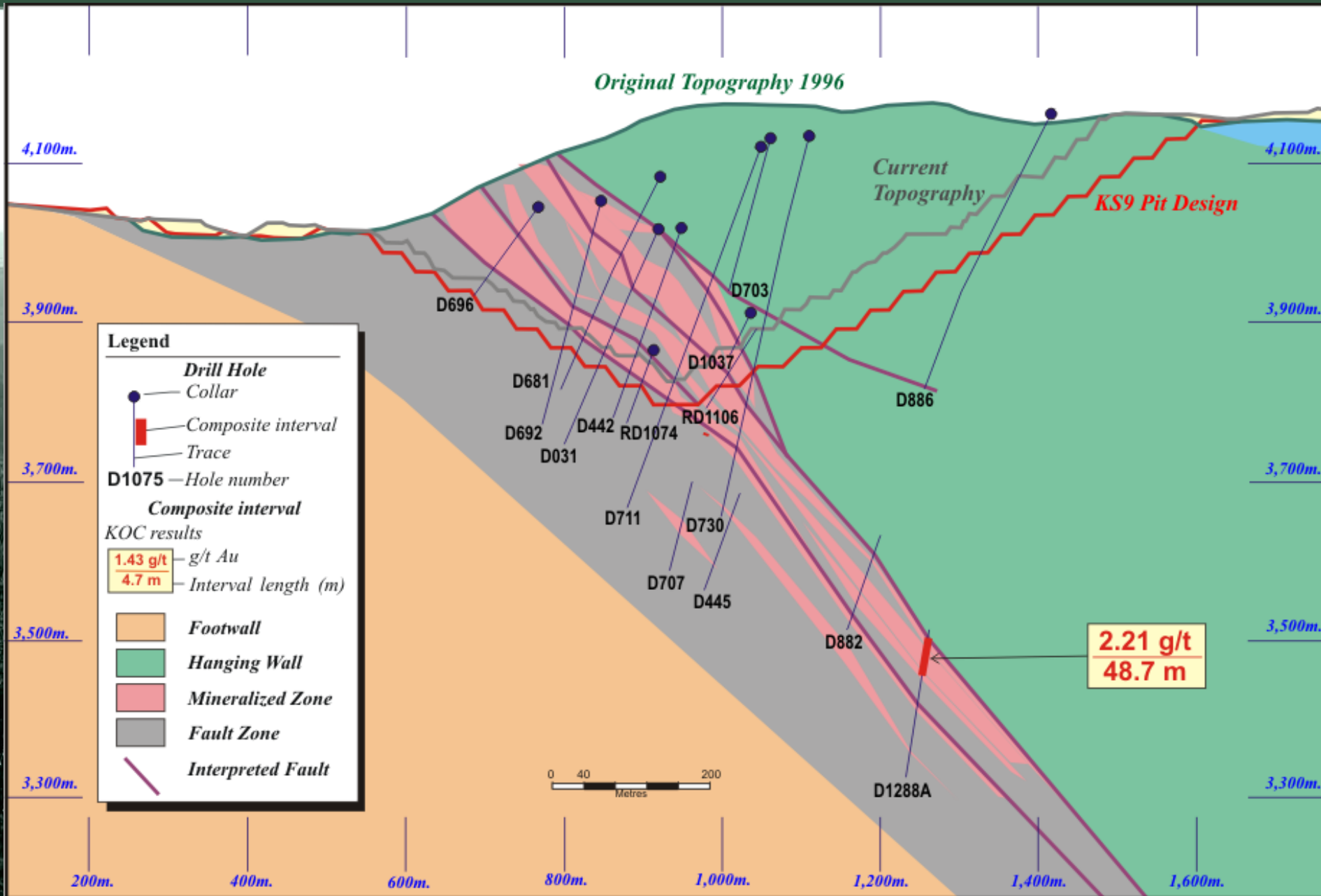
Kumtor – Section 74



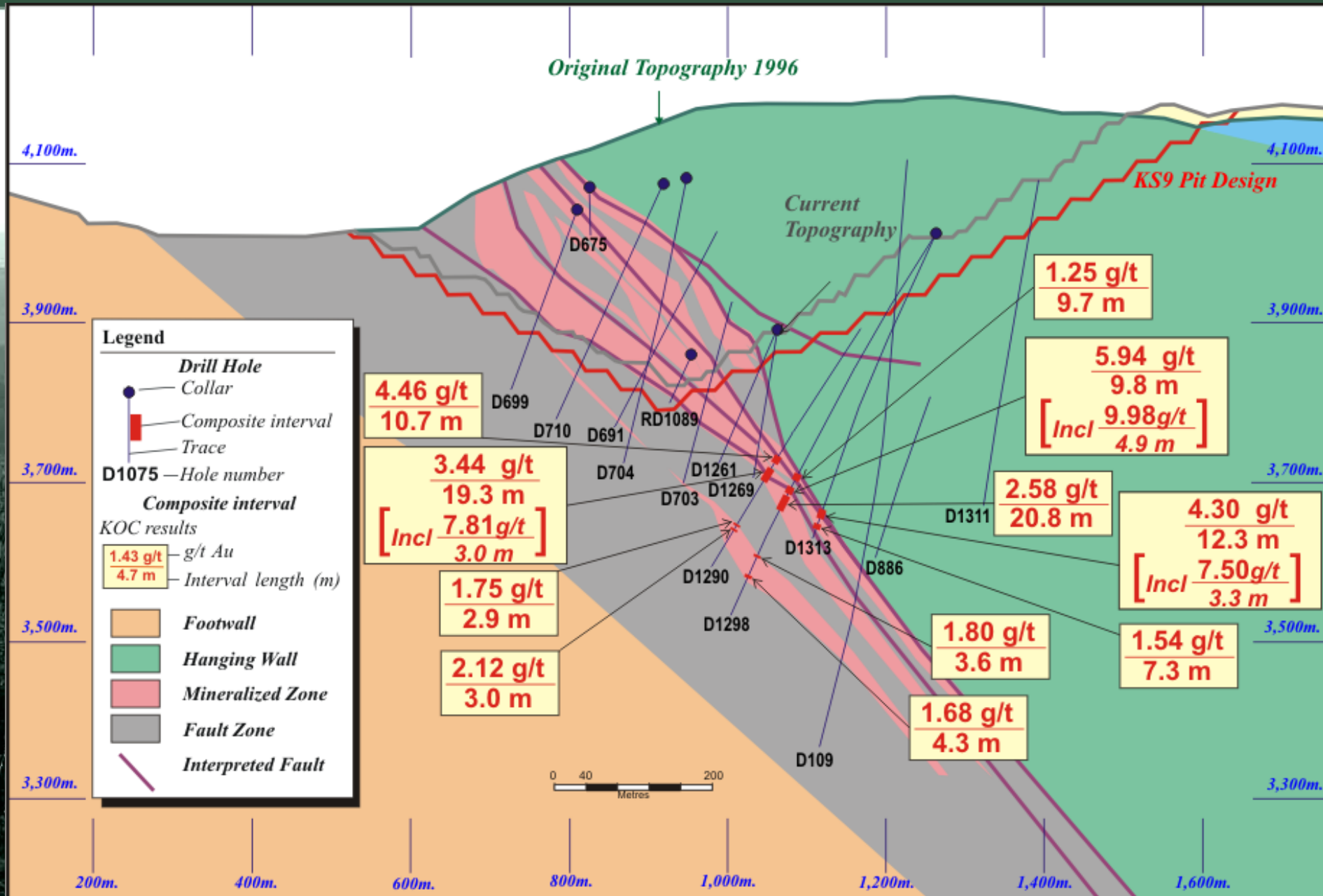
Kumtor – Section 110



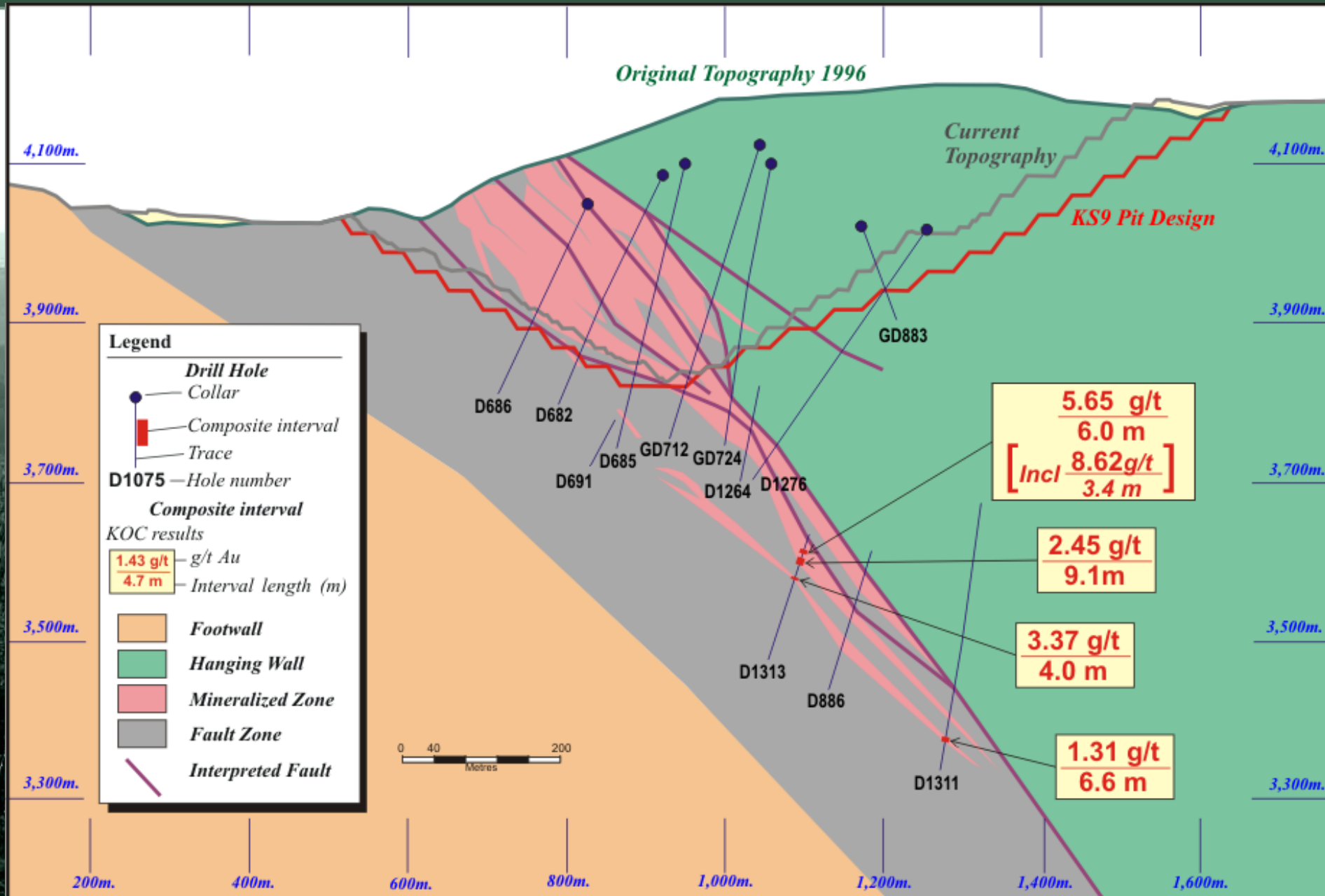
Kumtor – Section 114



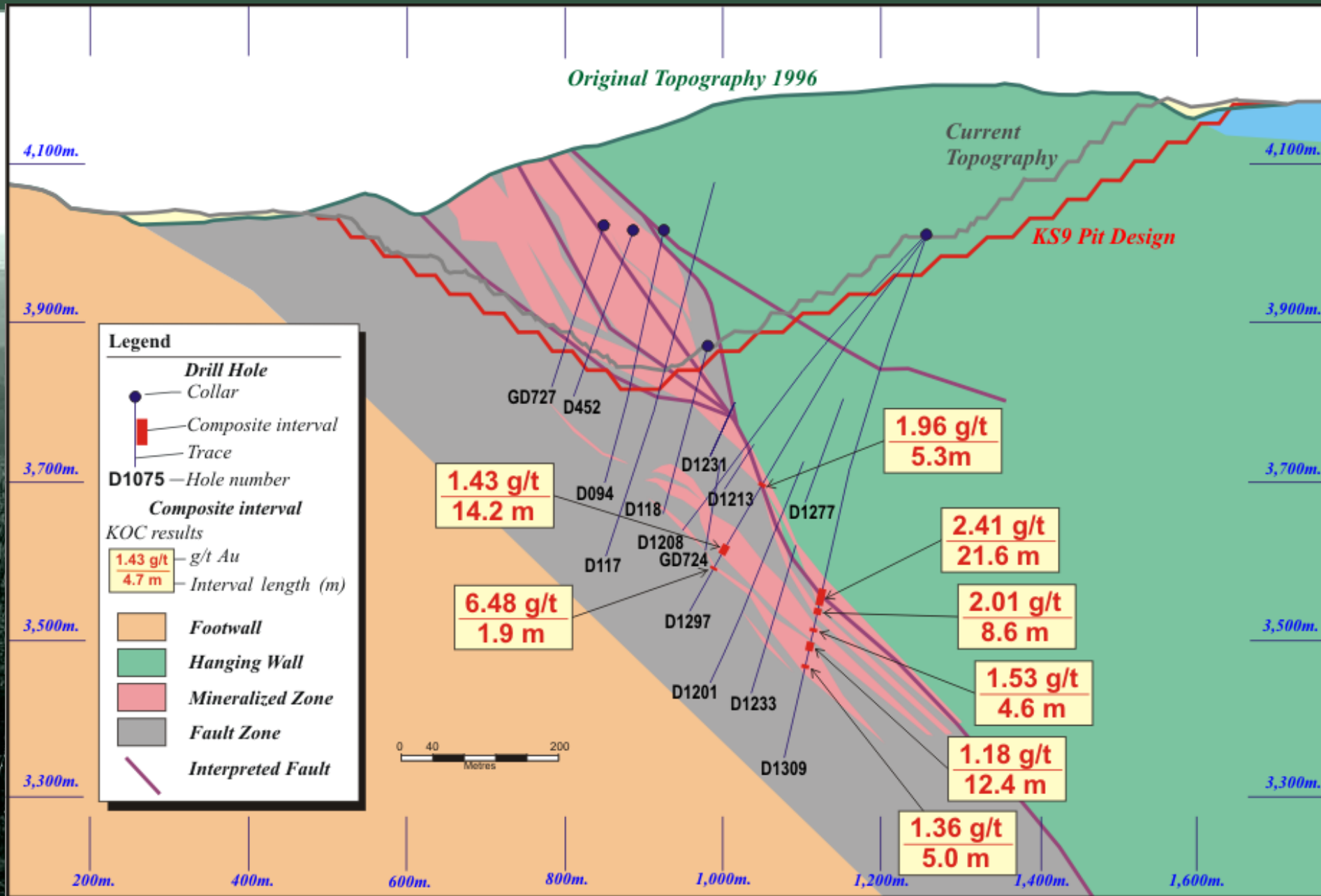
Kumtor – Section 118



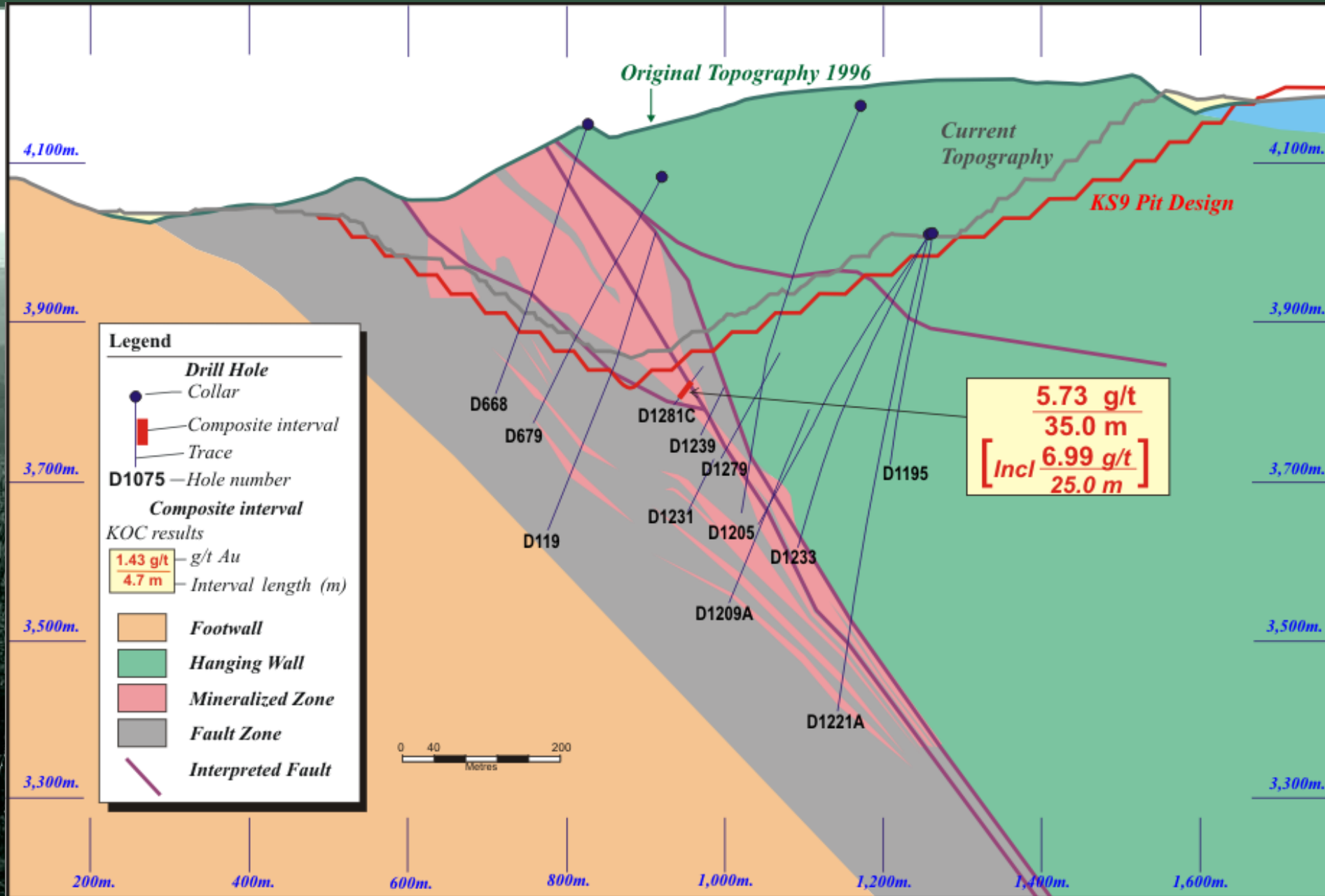
Kumtor – Section 122



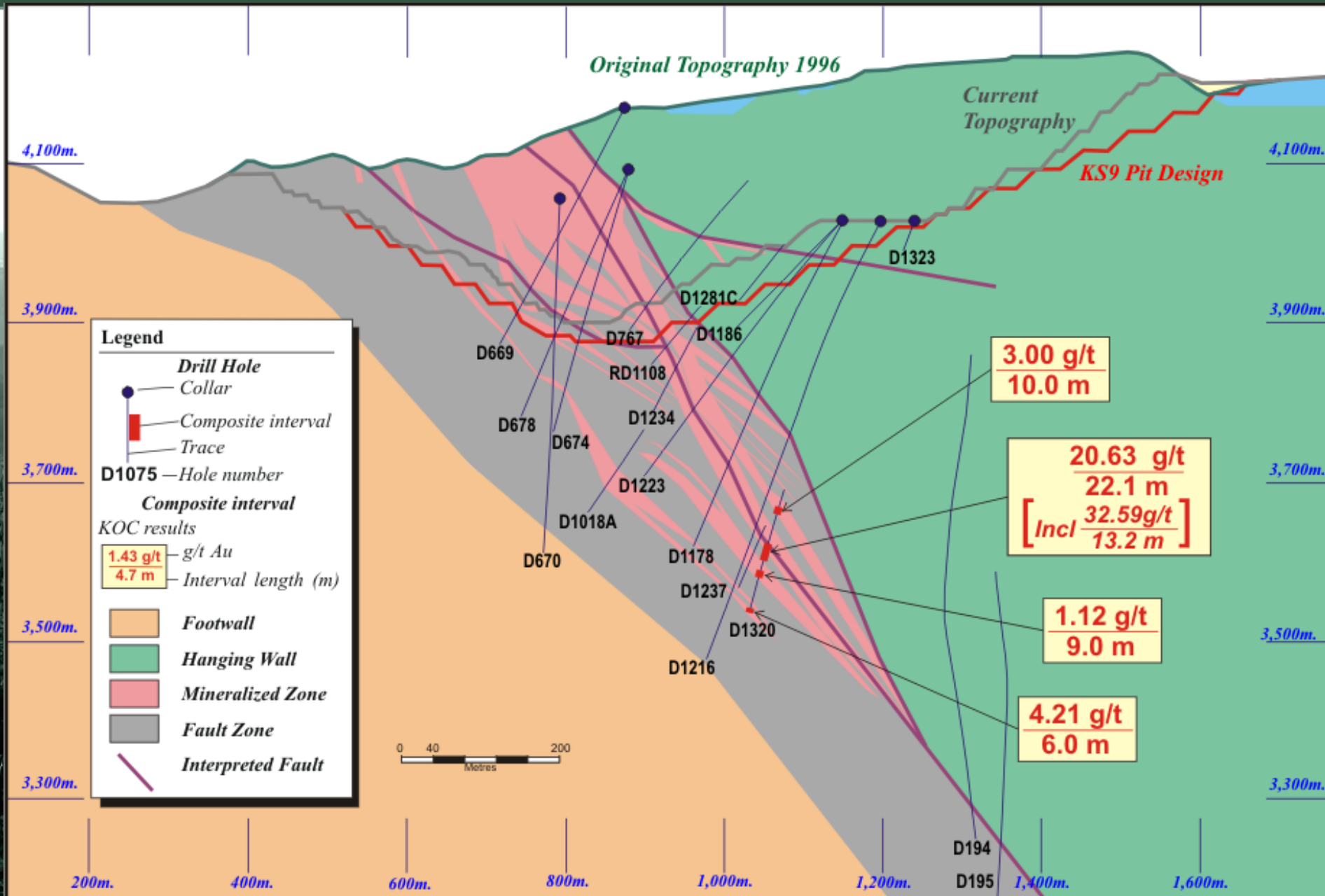
Kumtor – Section 126



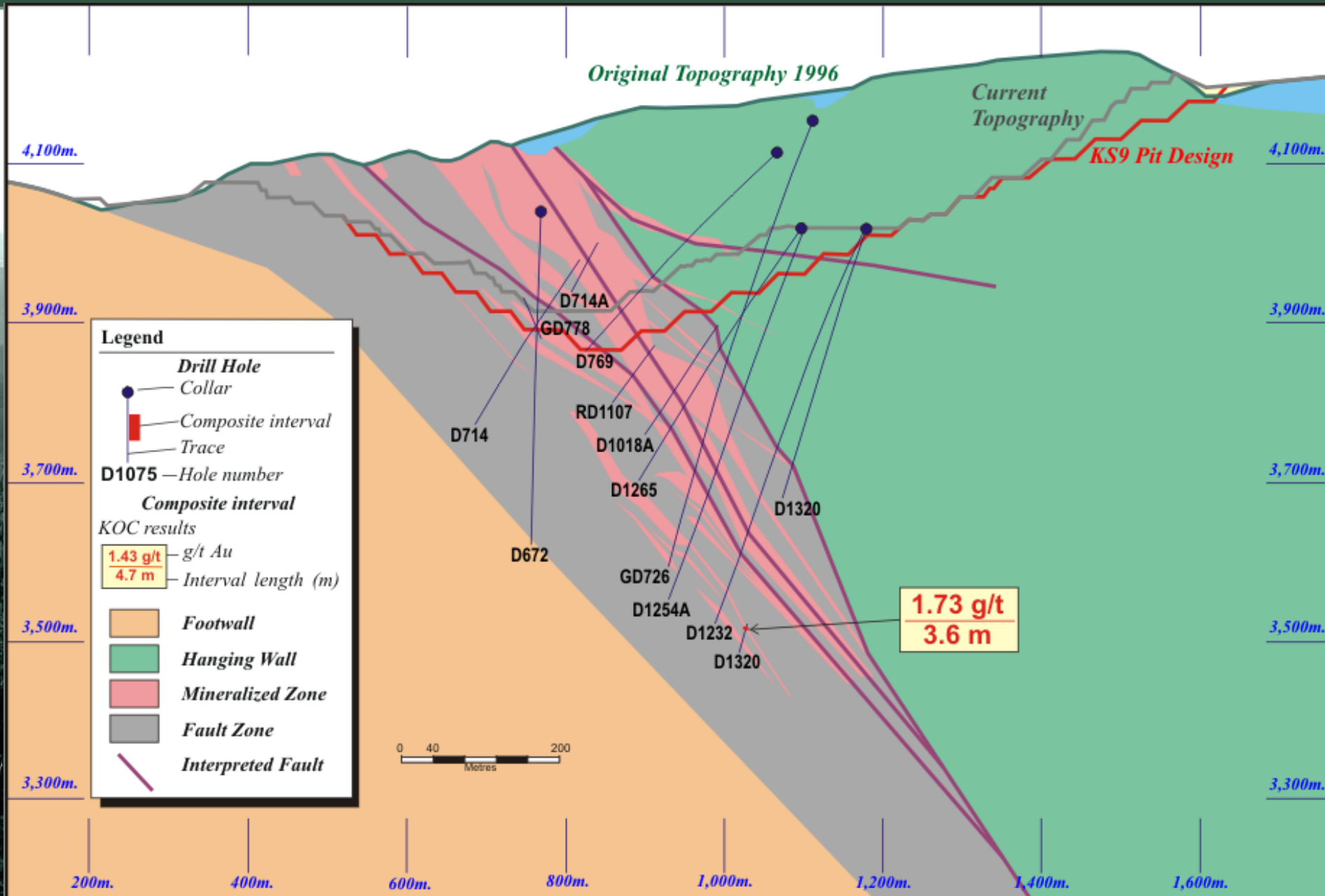
Kumtor – Section 130



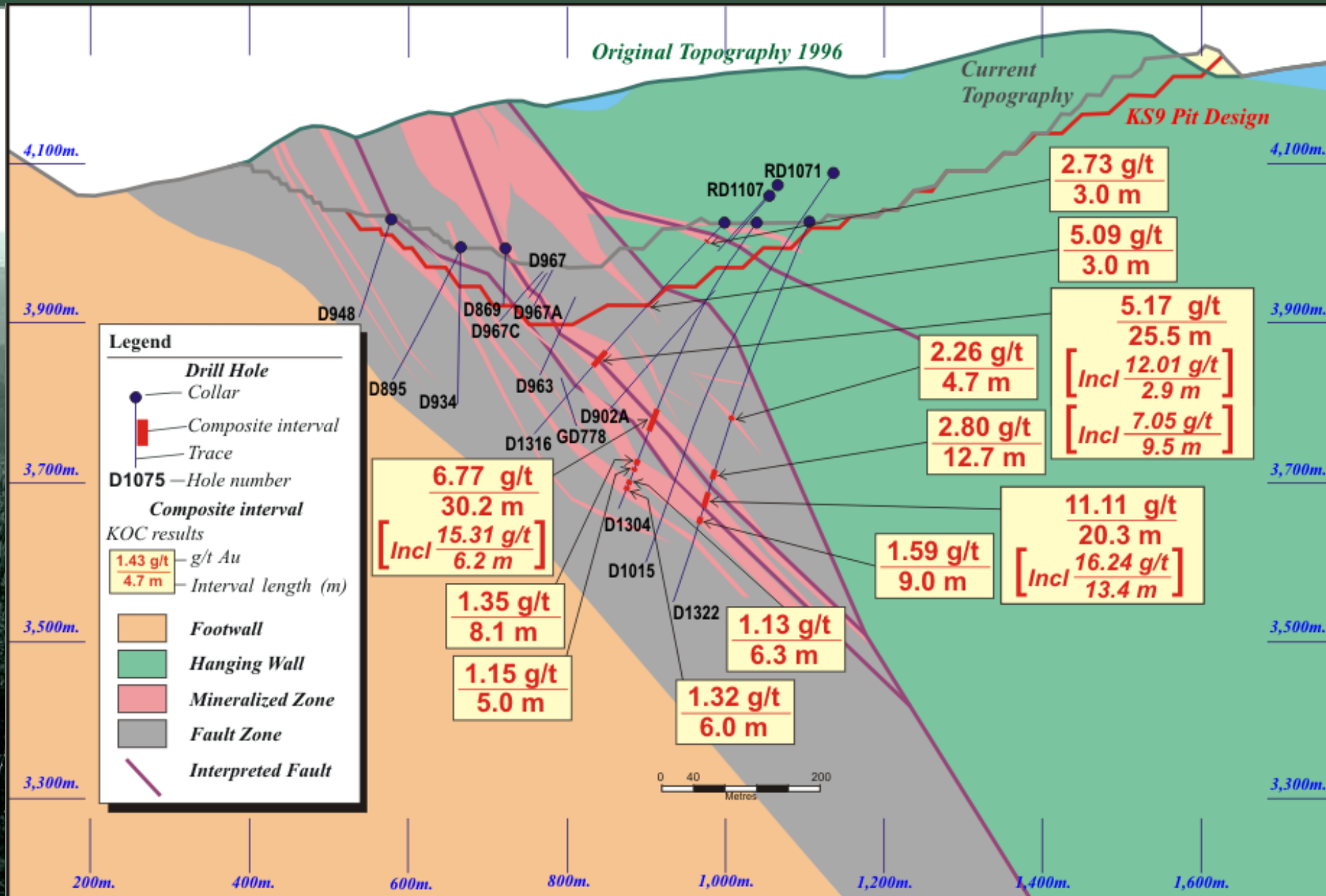
Kumtor – Section 138



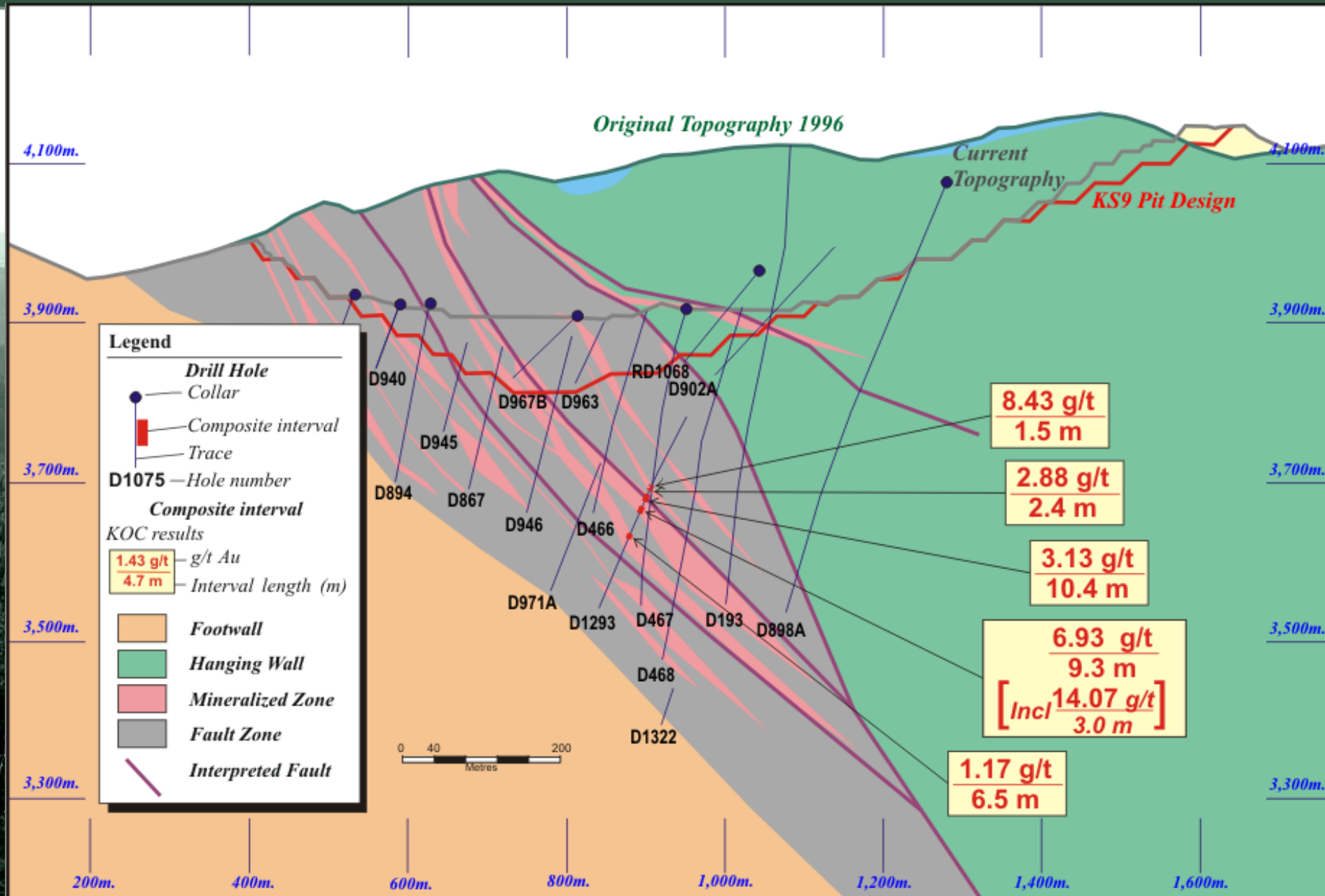
Kumtor – Section 142



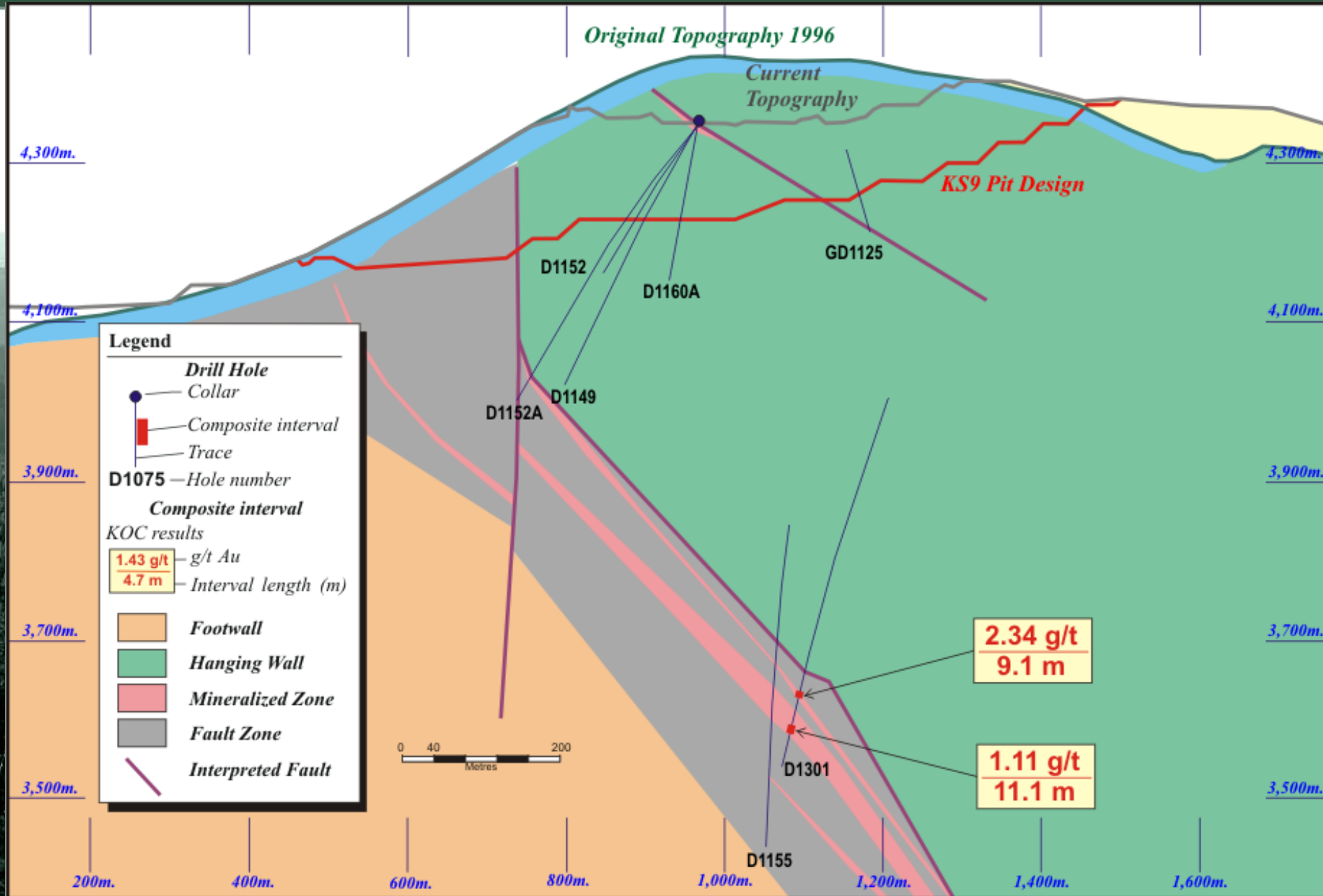
Kumtor – Section 150



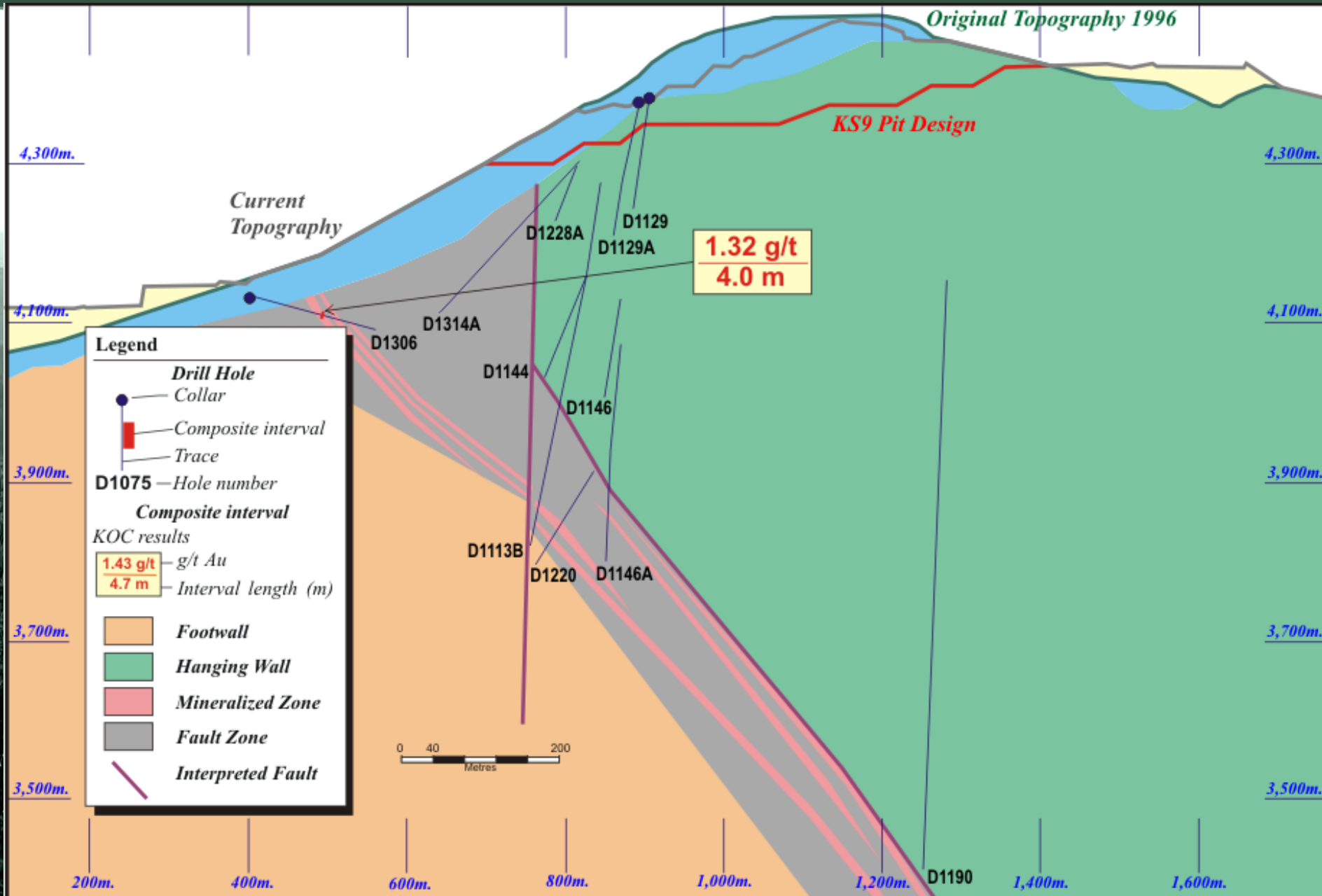
Kumtor – Section 154



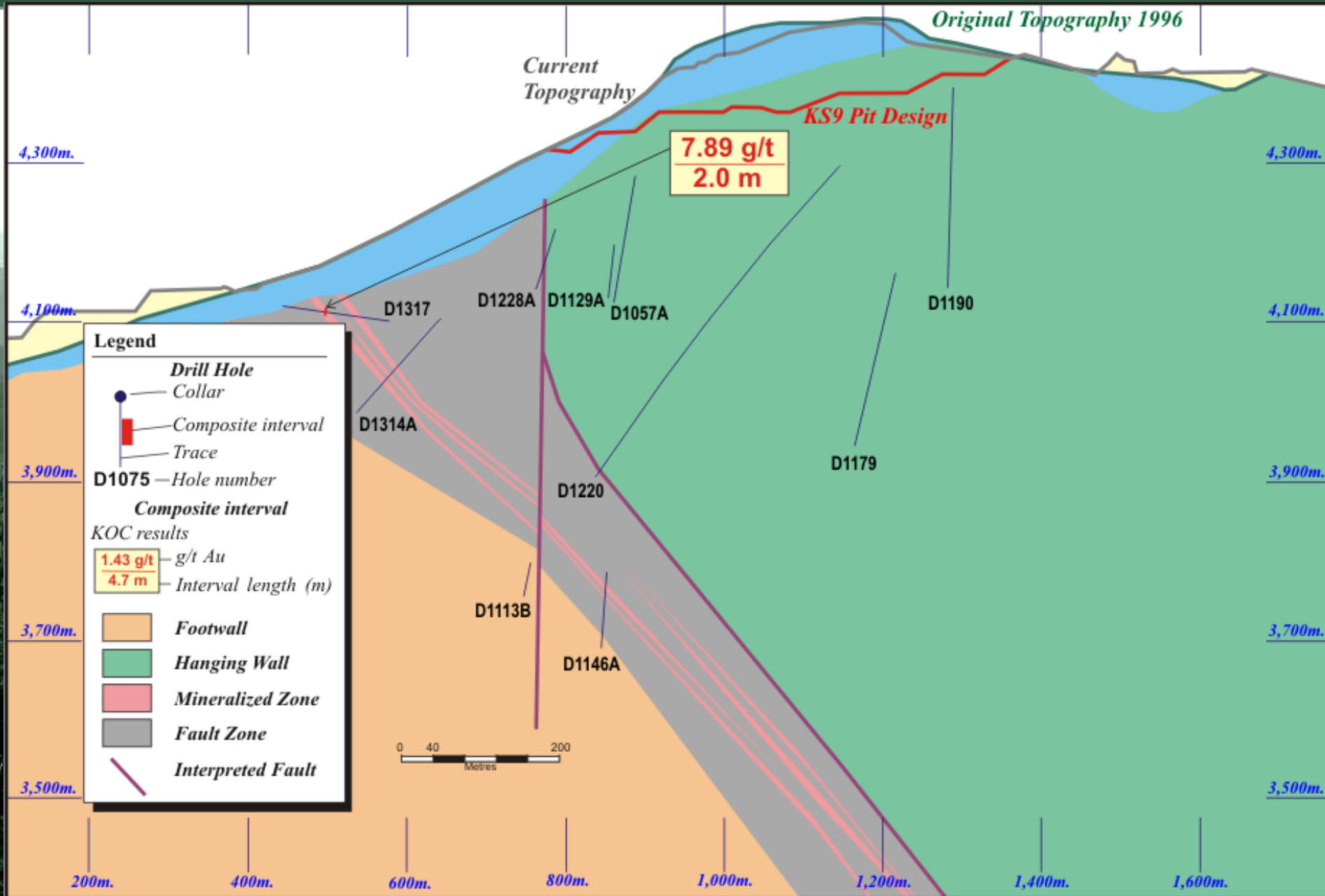
Kumtor – Section 206



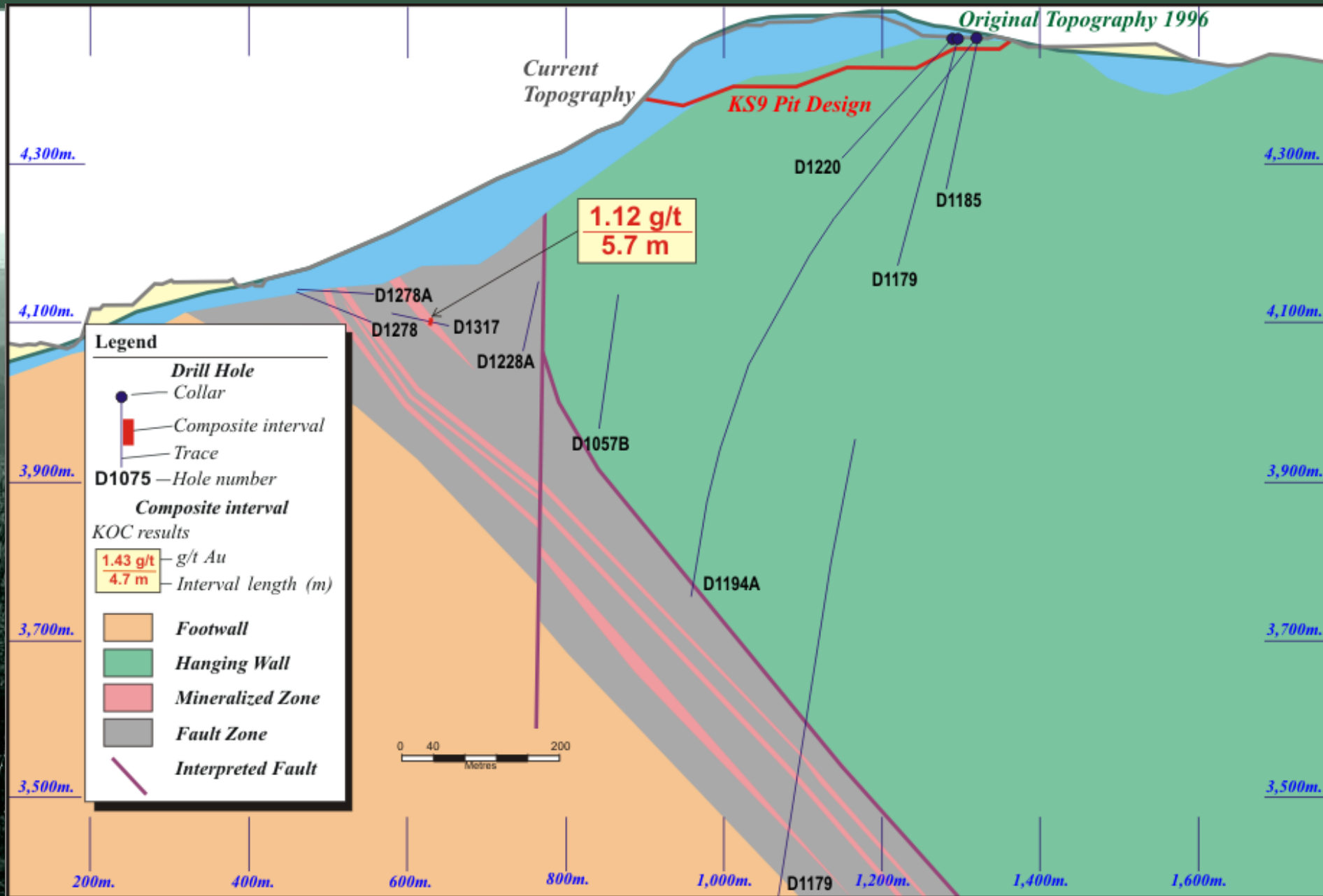
Kumtor – Section 226



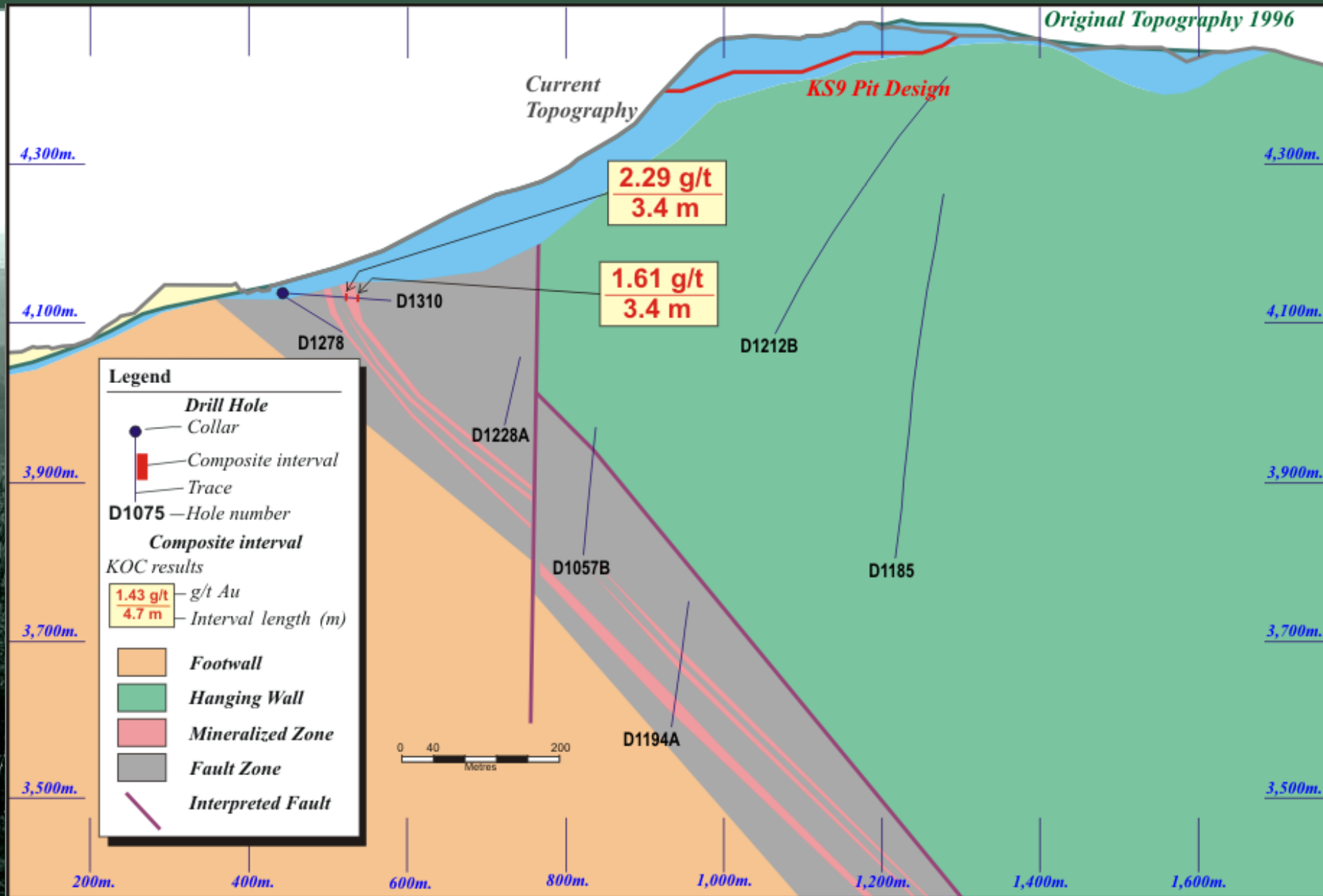
Kumtor – Section 230



Kumtor – Section 234



Kumtor – Section 238



Kumtor Drillhole Plan Map

Drillholes Completed in Q1 2009

