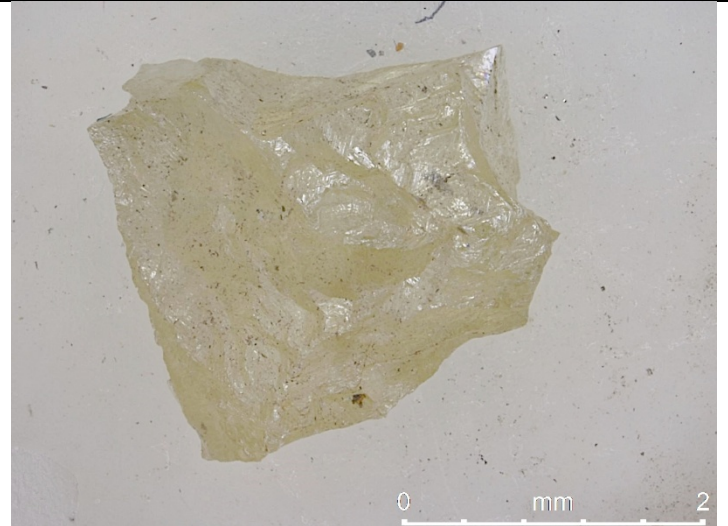




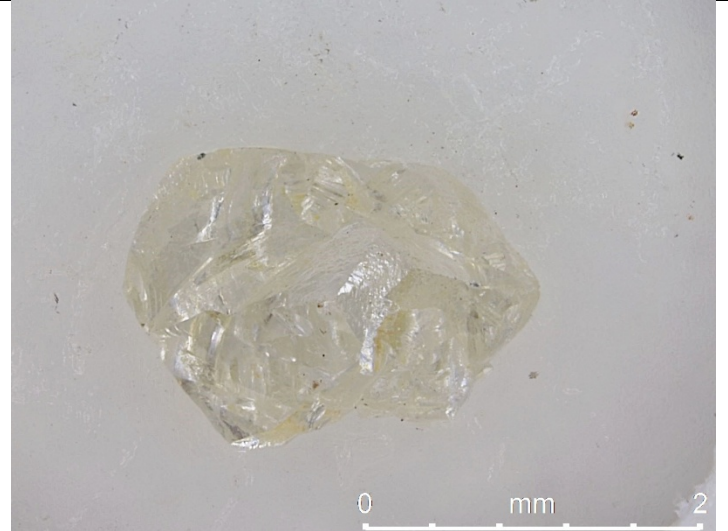
A) Sample J1-1: Greenish-yellow transparent broken complex crystal, size fraction  $-2.36 \text{ mm} +1.70 \text{ mm}$ , 0.1385 carats



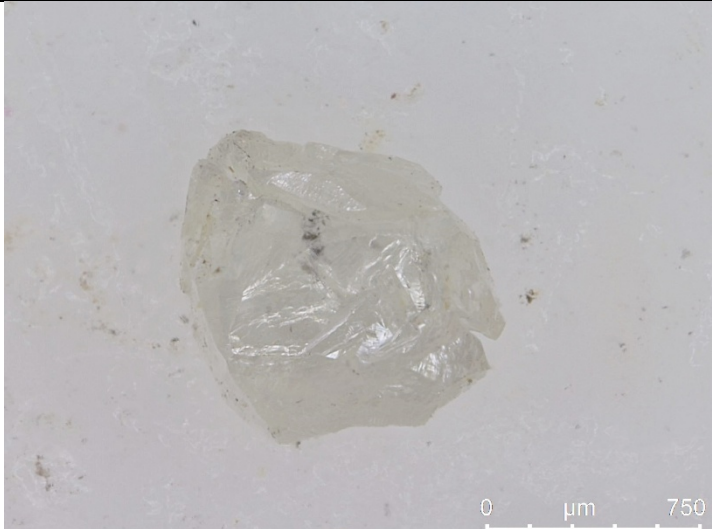
B) Sample J2-1: Yellow translucent broken dodecahedron with inclusion, size fraction  $-3.35 \text{ mm} +2.36 \text{ mm}$ , 0.1771 carats



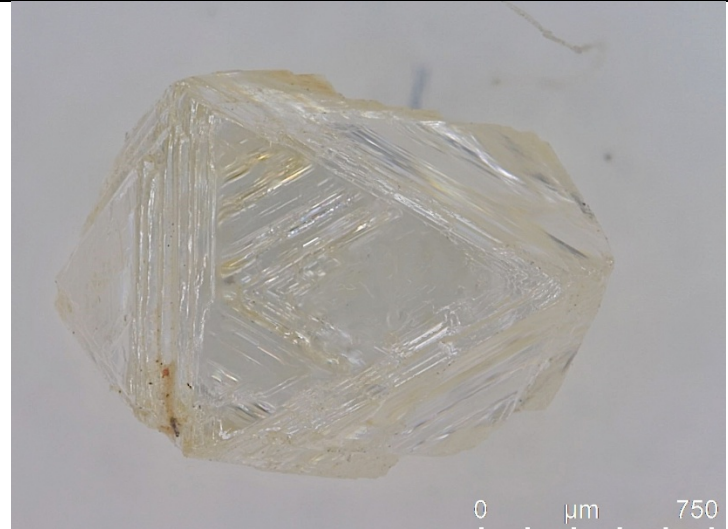
C) Sample J3-1: White transparent octahedron, size fraction  $-2.36 \text{ mm} +1.70 \text{ mm}$ , 0.0707 carats



D) Sample J3-2: White transparent composite crystal, size fraction  $-2.36 \text{ mm} +1.70 \text{ mm}$ , 0.1037 carats



E) Sample J4-1: White translucent broken octahedron, size fraction  $-1.18 \text{ mm} +0.85 \text{ mm}$ , 0.00576 carats



F) Sample J4-1: White transparent octahedral contact twin, size fraction  $-1.18 \text{ mm} +0.85 \text{ mm}$ , 0.02115 carats