

Figure 1: Crocodile Gold Northern Territory Location Map

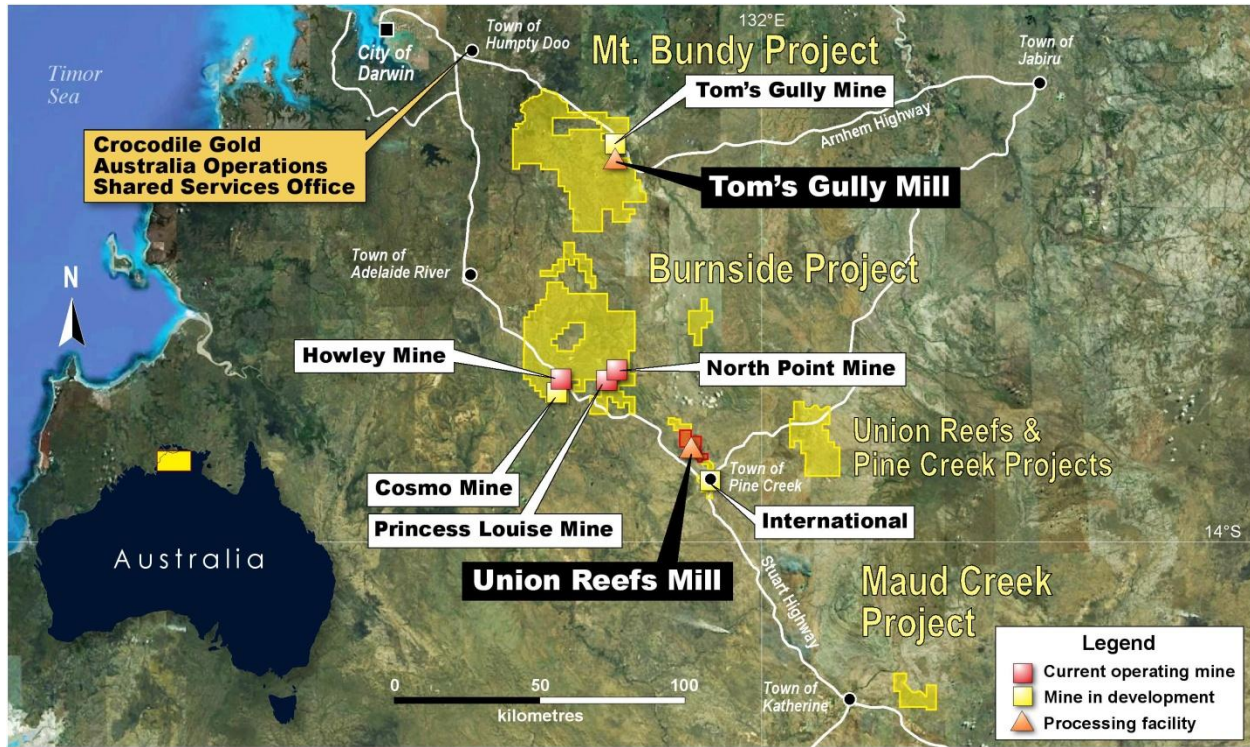


Figure 2: Longitudinal Section Prospect Deposit

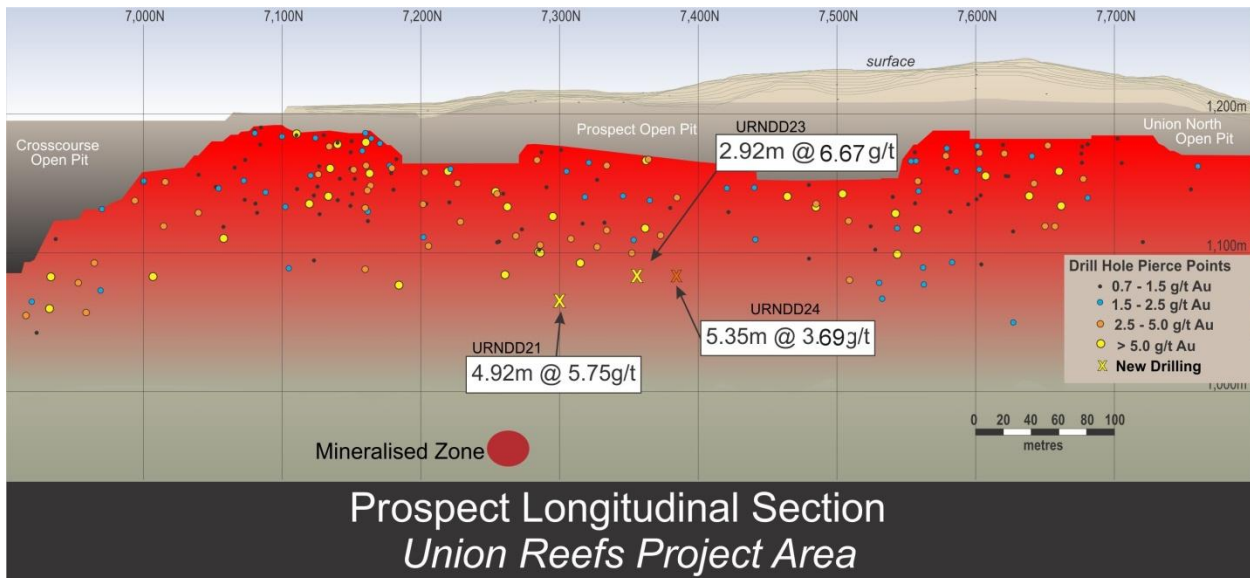


Figure 3: Cross Section showing URNDD21 at Prospect Deposit, Union Reefs

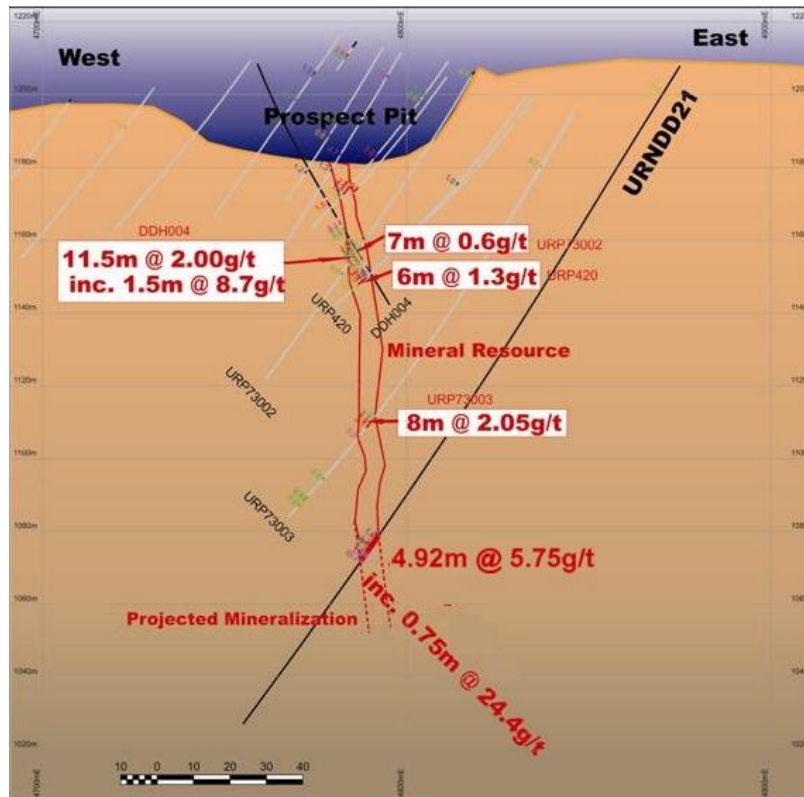


Figure 4: Cross Section showing URNDD23 at Prospect Deposit, Union Reefs

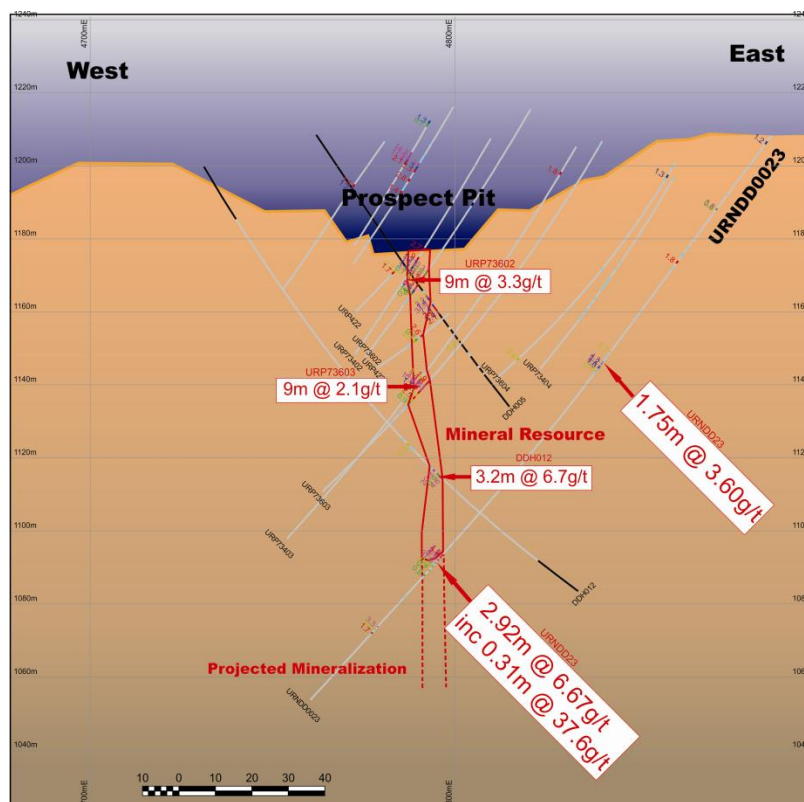
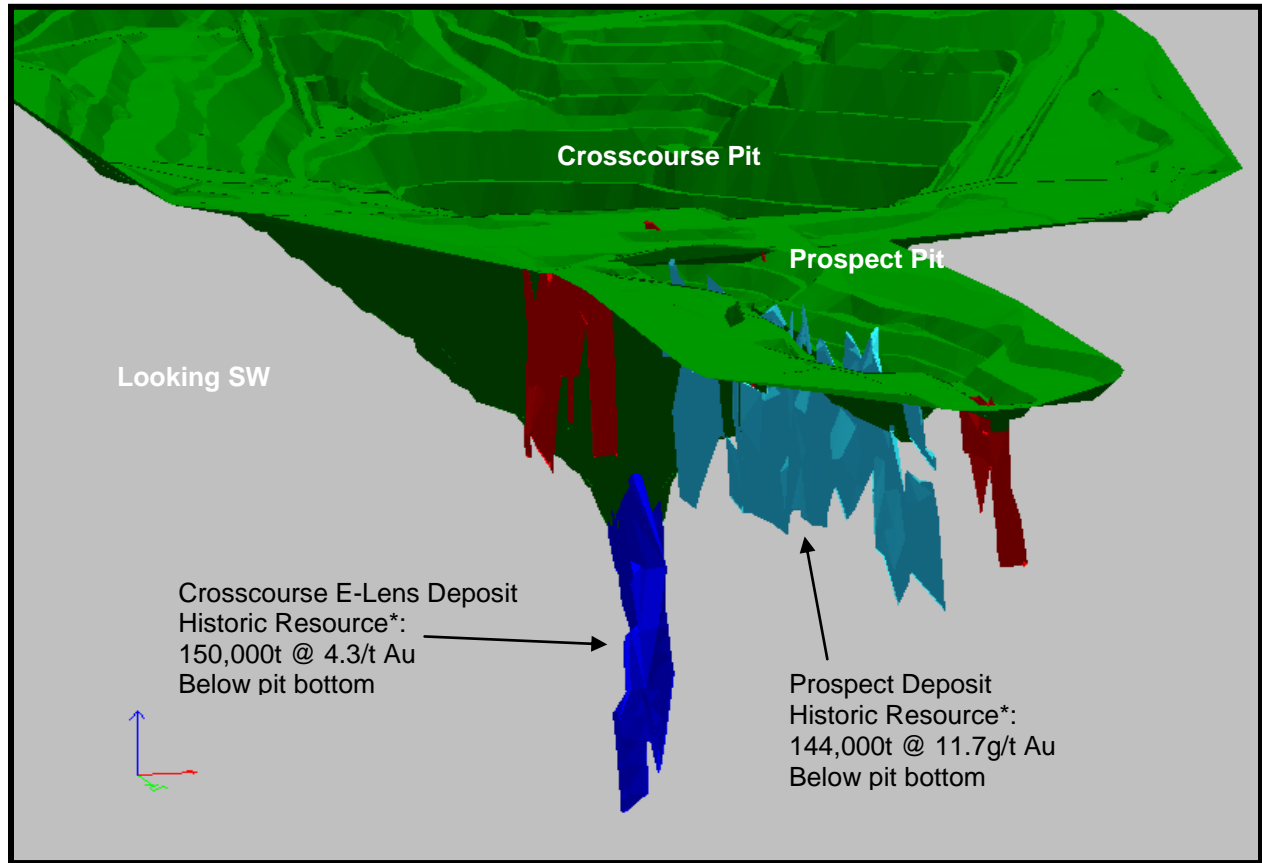


Figure 5: 3D Representation of the Crosscourse and Prospect Deposits



* Historical estimates derived from the internal report titled "Mine Closure Report, Union Reefs Gold Mine (Pine Creek)" prepared by Crosby, Q., Makar, B., Chen Chow, K., Sheehan, E., Davis, G., December 12, 2006. This report was not prepared in accordance with currently accepted guidelines for the preparation of Mineral Resources and Mineral Reserves, and does not comply with National Instrument 43-101 ("NI 43-101") and is not considered by Crocodile Gold as current mineral resources or mineral reserves. These resource estimates may have also been depleted by past mining, and although possibly demonstrative of the potential grade of the deposits, the historical estimates of tonnage and grade are not considered indicative of the remnant potential resource. A qualified person, as such term is defined under NI 43-101, has not done sufficient work to classify the historical estimate as current mineral resources or mineral reserves. Crocodile Gold is not treating the historical estimate as current mineral resources or mineral reserves and the historical estimate should not be relied upon.

Figure 6: Collar Plan for Union Reefs North Drilling

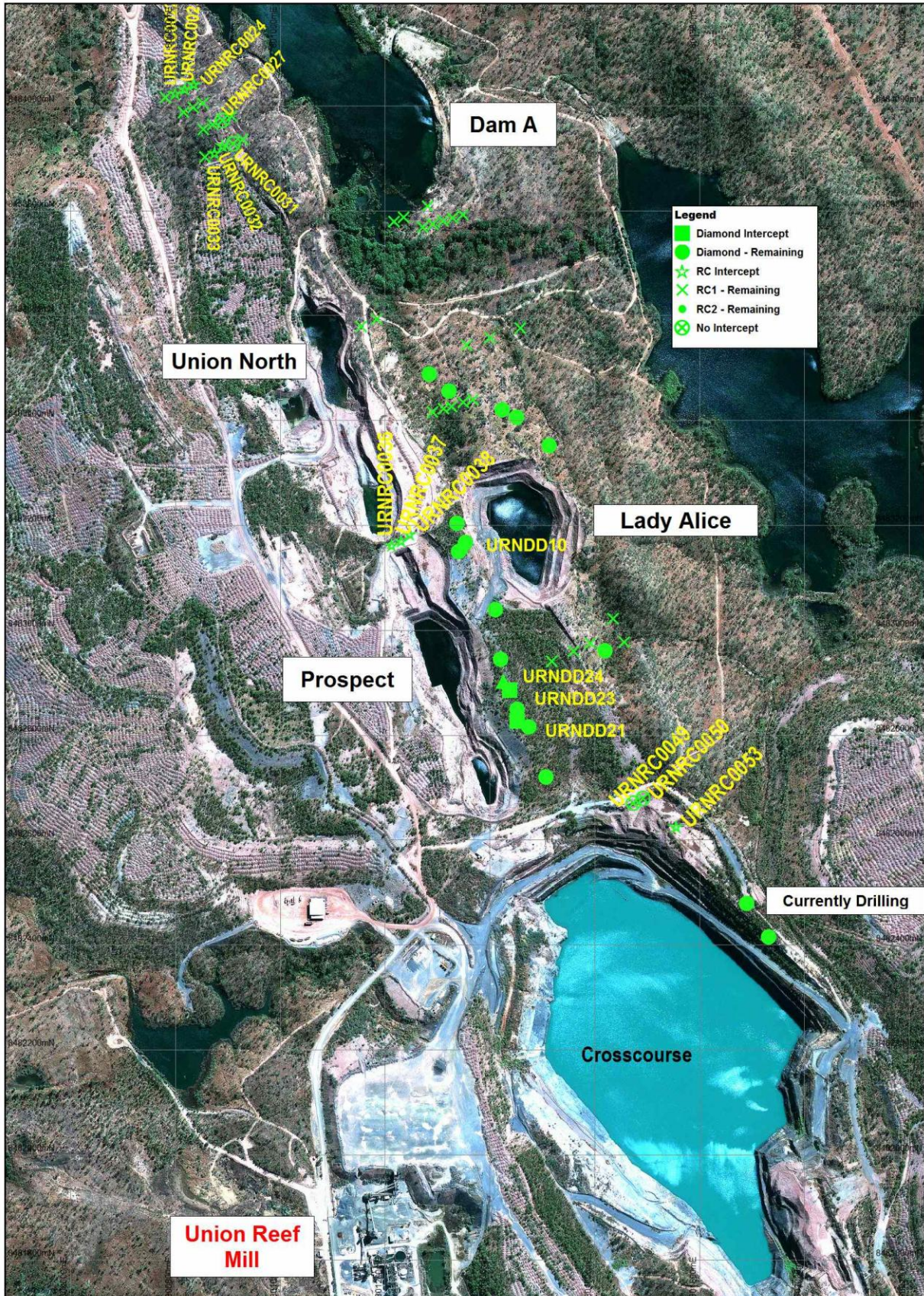


Figure 7: Collar Plan for Union Reefs South Drilling

