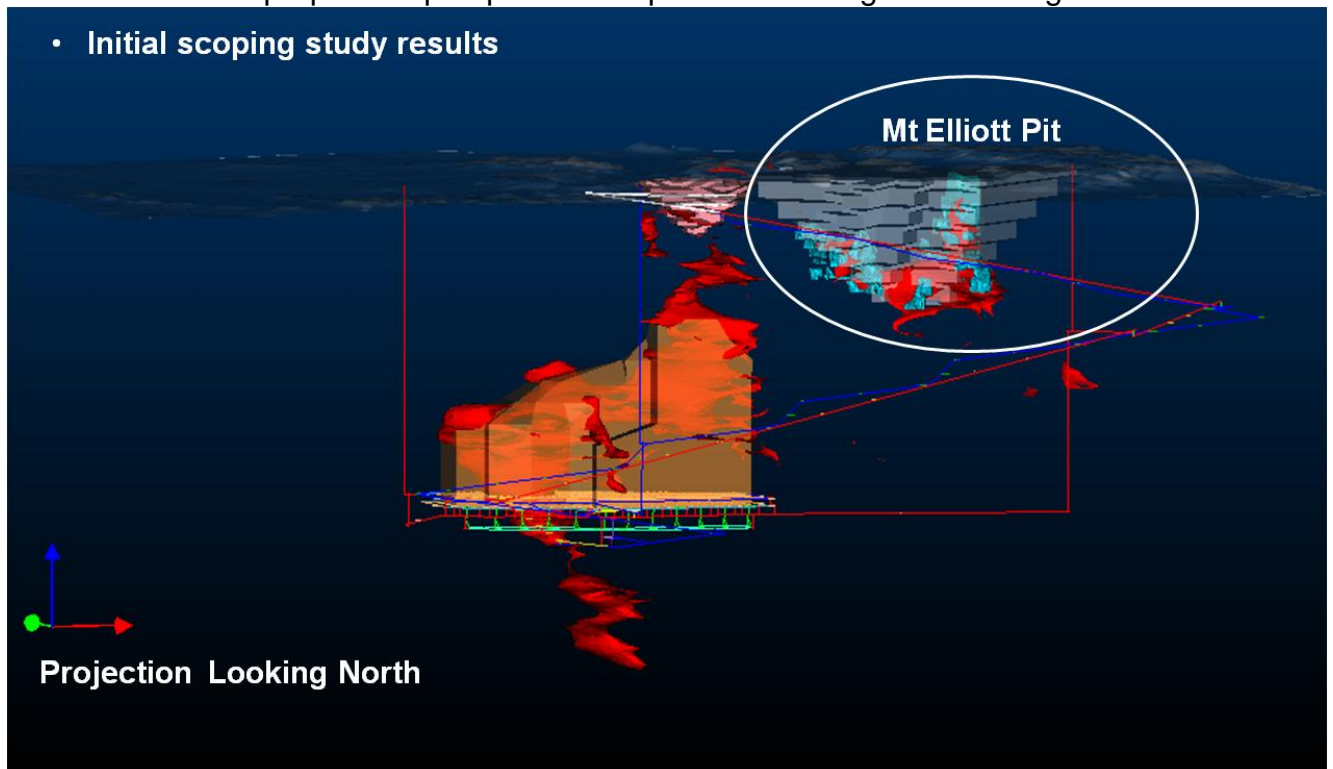
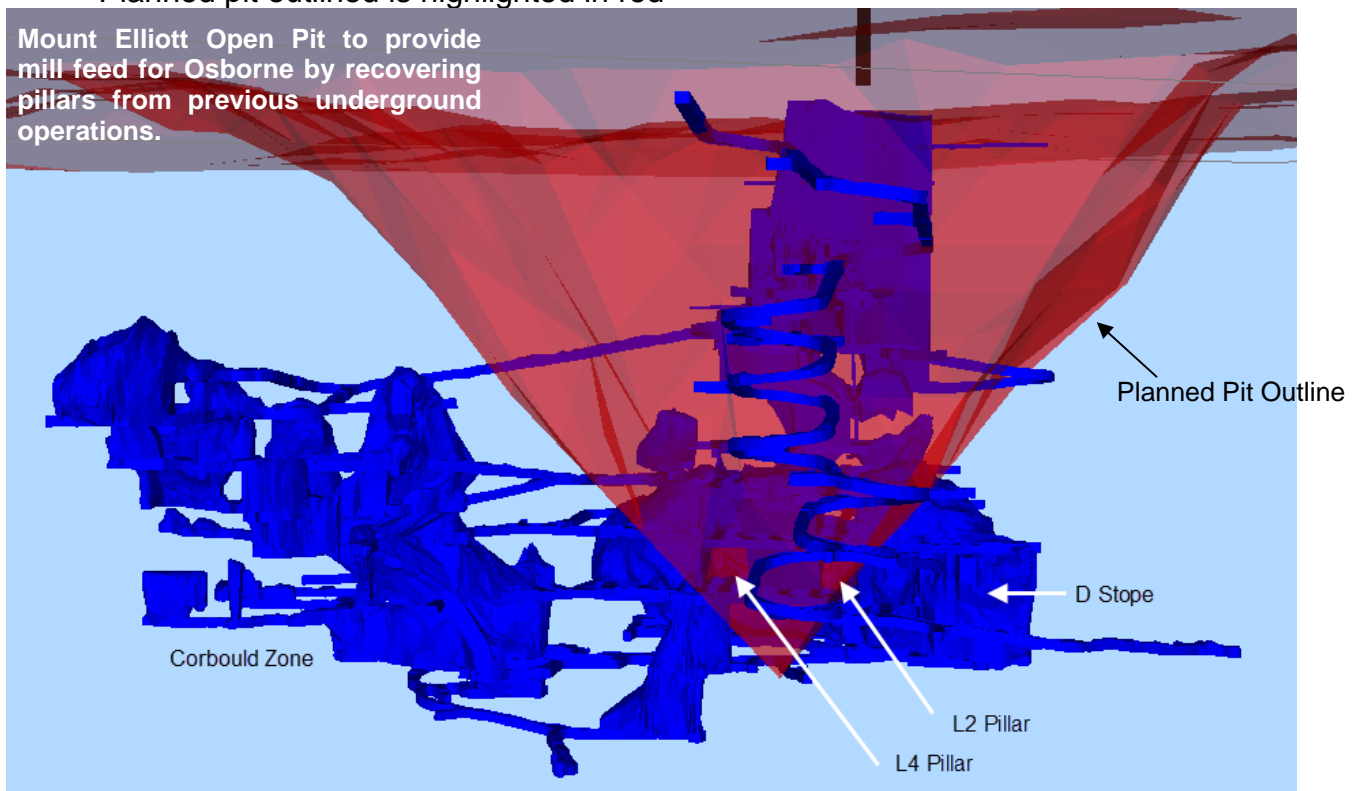


Figure 2 – Mount Elliott Open Pit – to Provide Mill Feed for Osborne

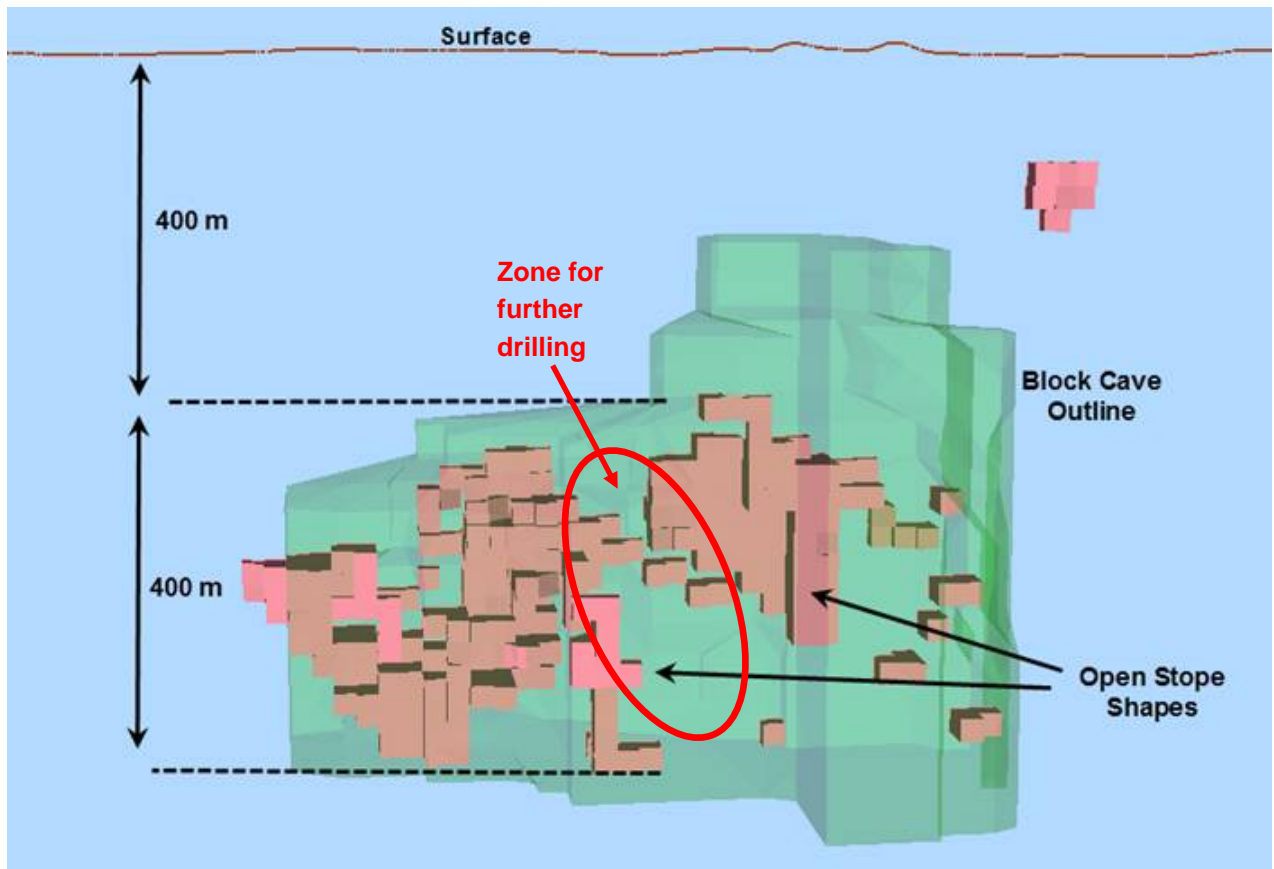
- Location of proposed open pit takes in previous underground mining area
- Initial scoping study results



- Planned pit outlined is highlighted in red

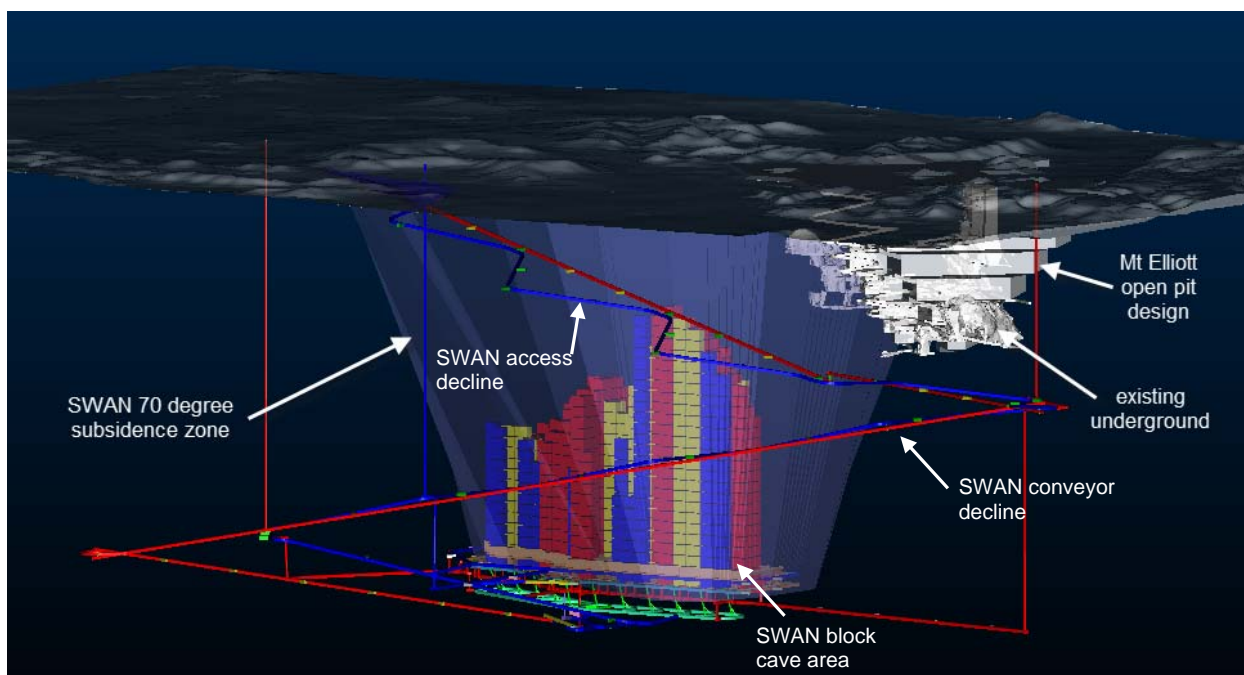


**Figure 3 – SWAN Sub-Level Open-Stope Design**



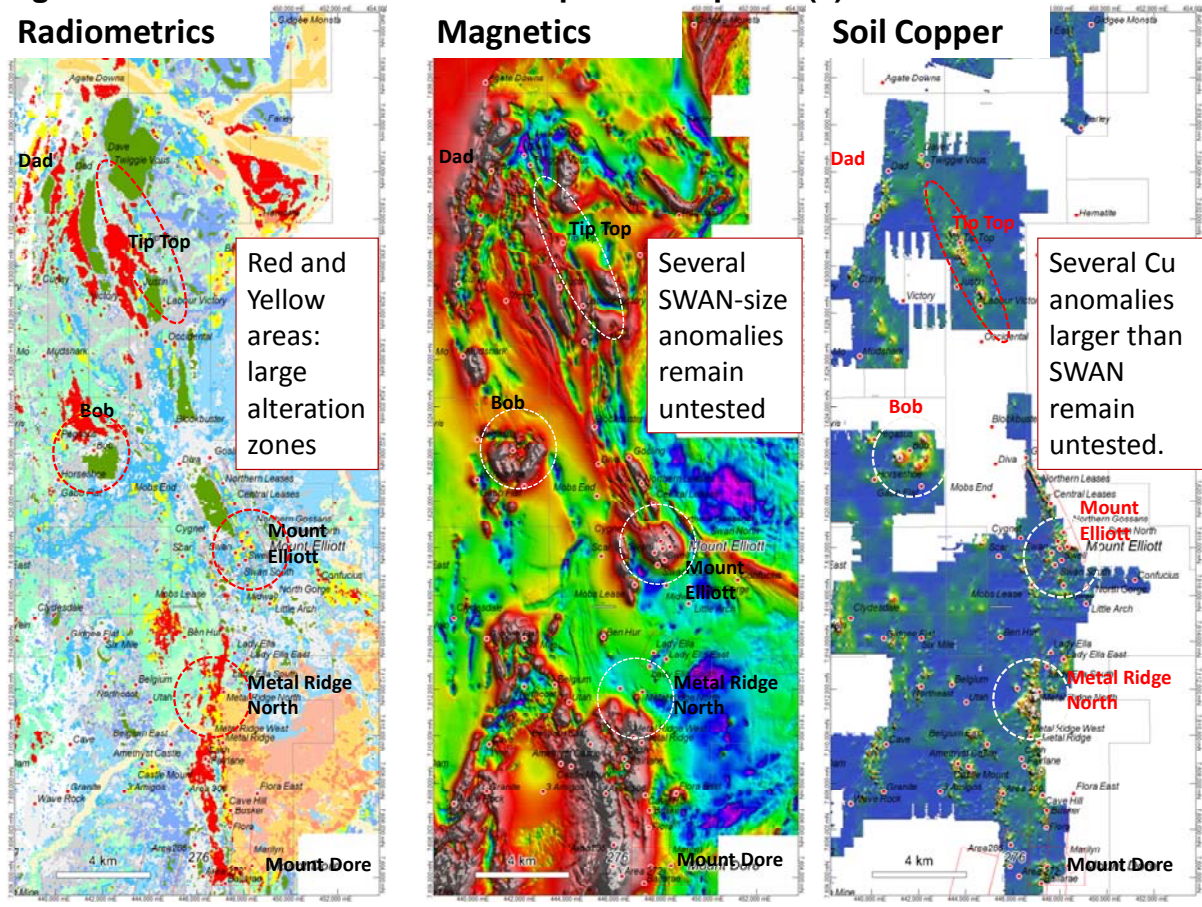
Note: the access decline can be developed into SWAN ore body before final mining decision (Sub-Level Open-Stope or Block Cave) is required

**Figure 4 – SWAN Block Cave Design**





**Figure 5 – Mount Elliott Resource Expansion Upside (1)**



**Figure 6 – Mount Elliott Resource Expansion Upside (2)**

- Untested anomalies exist at depth under SWAN and near-mine.

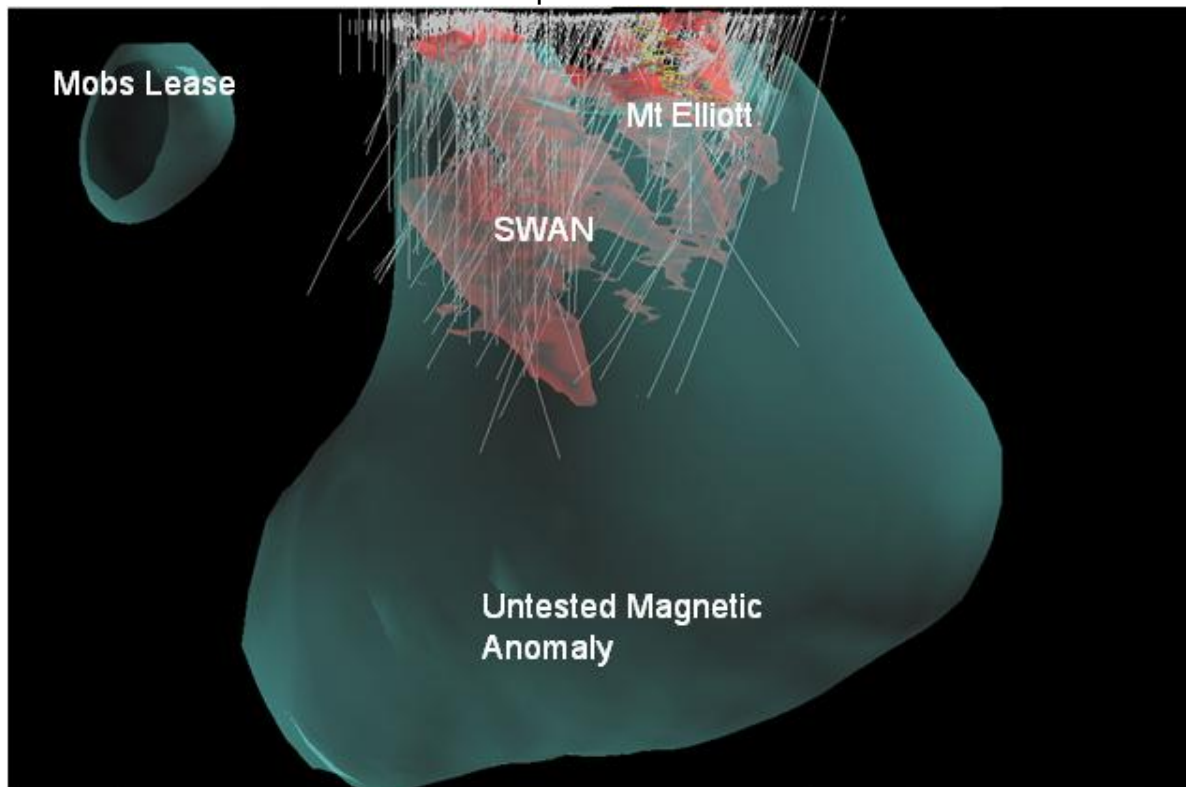
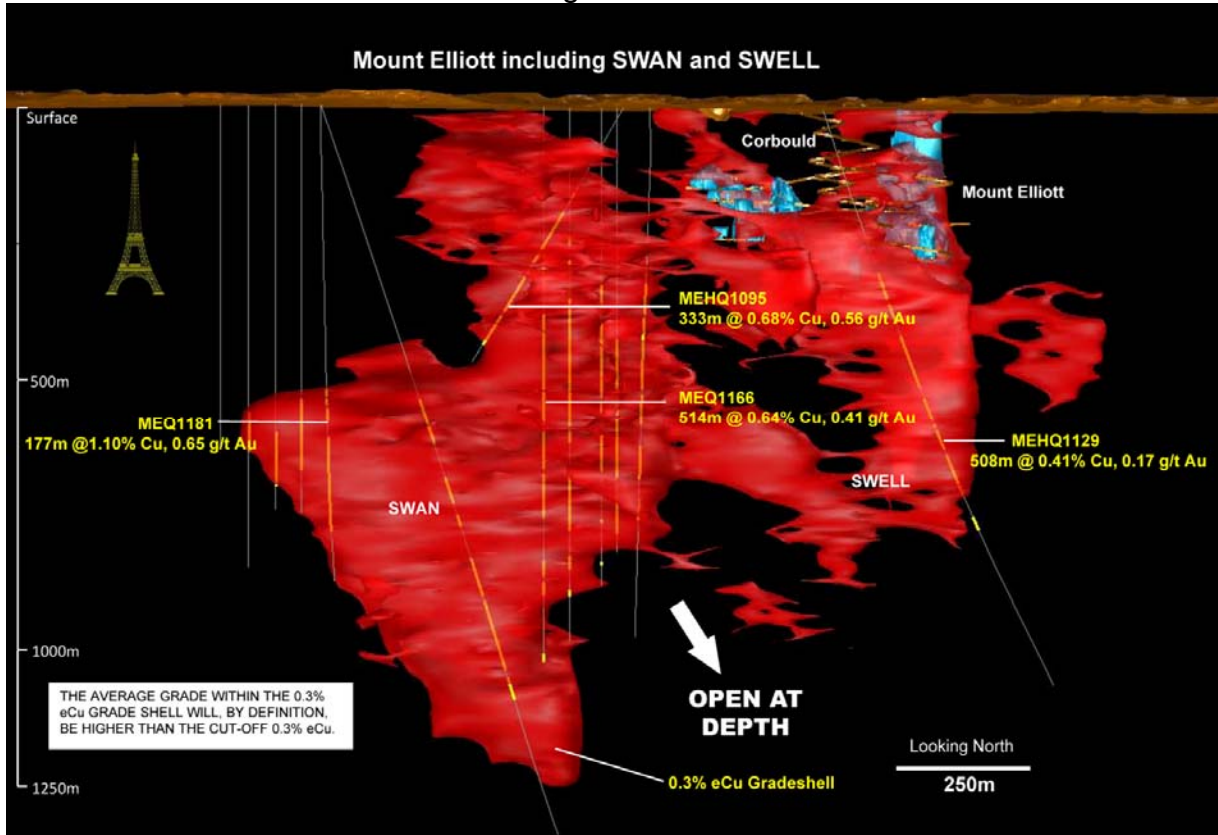
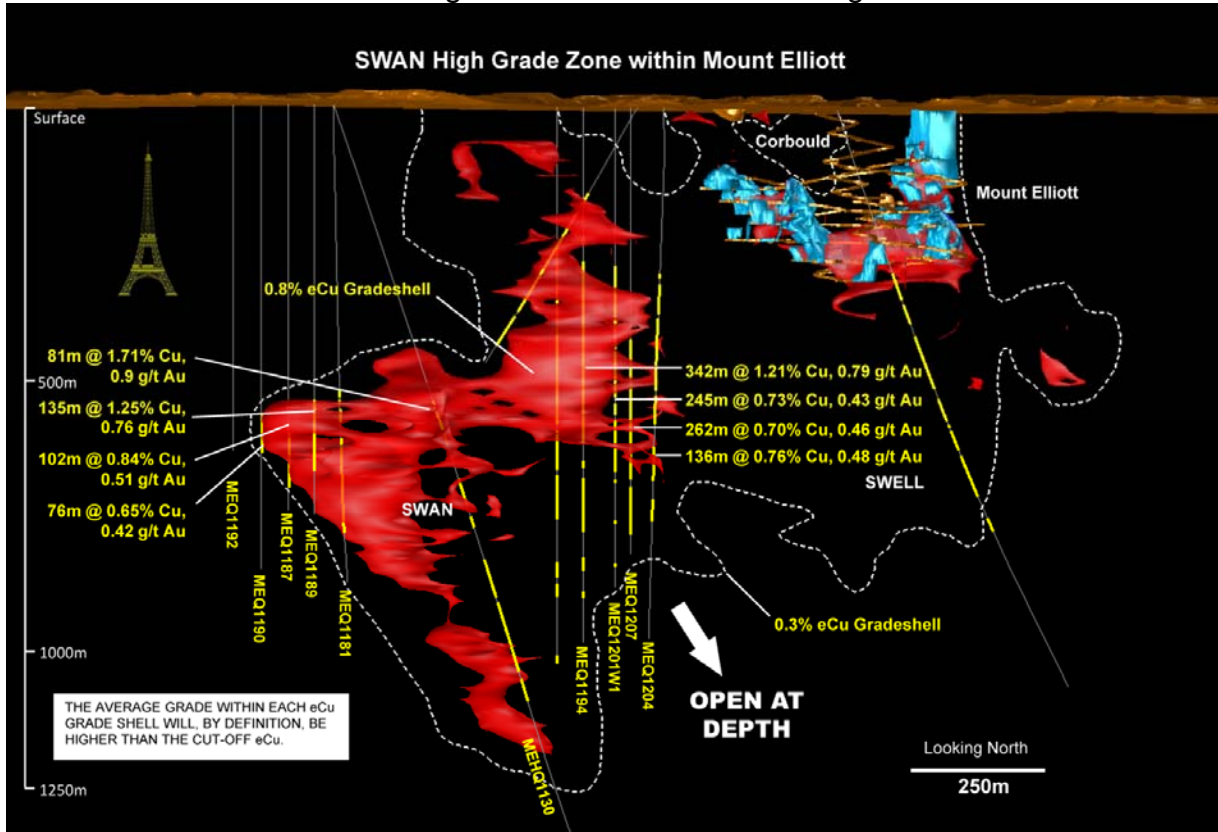


Figure 7 – Mount Elliott Grade Shells

- Mount Elliott overall – 0.3% eCu grade shell



- Mount Elliott – SWAN High-Grade Zone – 0.8% eCu grade shell





**Figure 8 – Mount Elliott Regional Map**

