

APPENDIX A

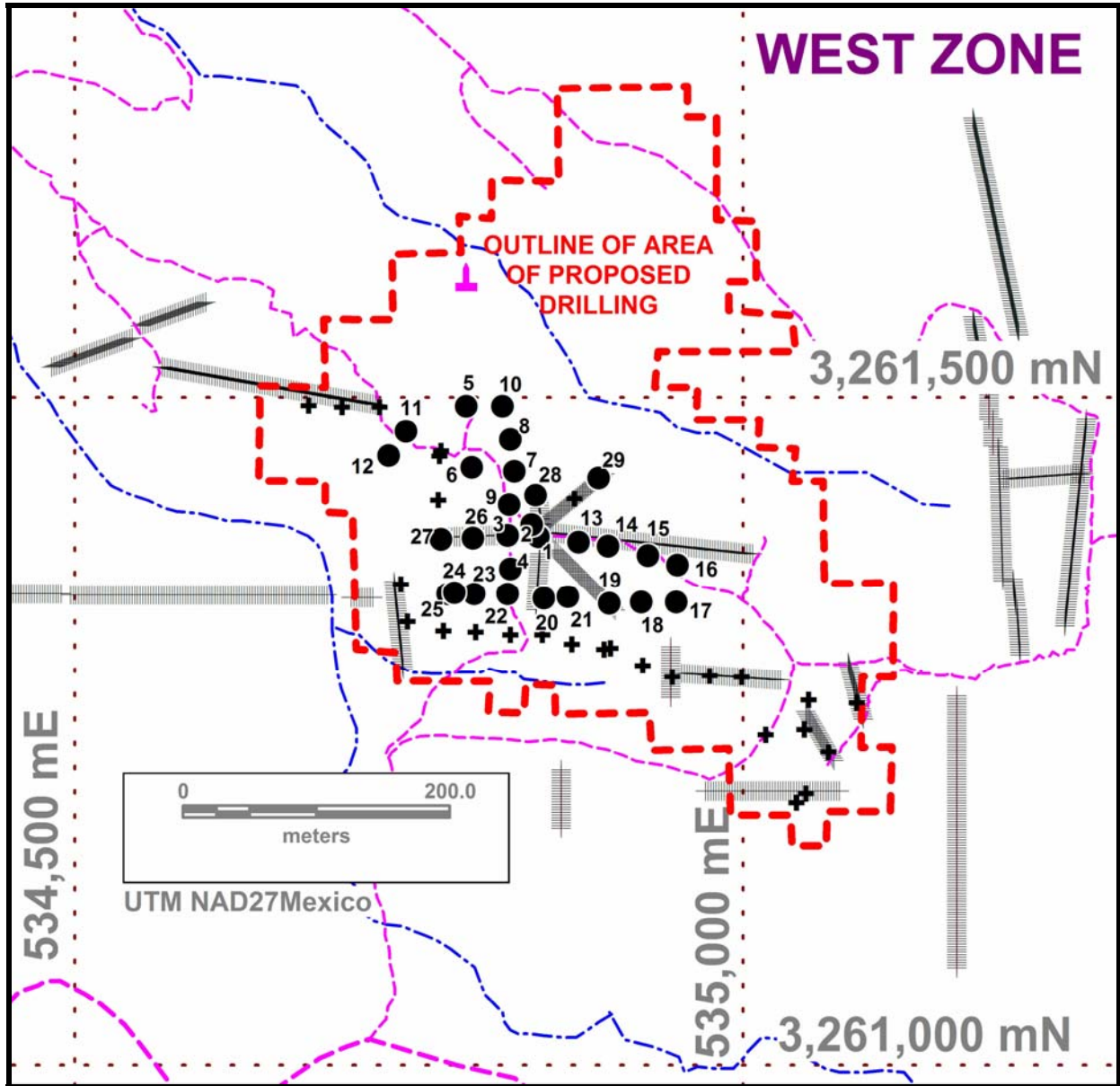


Figure A1. Reverse circulation drill holes completed on the West Zone of the Don Luis Property, Sonora, Mexico. Holes DLS11RC001 to 029, subject of this report, are labeled. Holes drilled but not reported are marked by crosses. Trenches are marked by hash marks.

TABLE A1. Silver results for DLS11RC001 to 029 from the West Zone of the **Don Luis Property**, Sonora, Mexico. All silver analyzes in grams per tonne (gpt) were done by certified Pioneer Laboratories Inc. of Richmond, BC, Canada. Total length of these 29 RC holes is 2,748 meters. Black entries used a cutoff of 6 gpt and red (including) entries used a cutoff of 12 gpt. Data was composited using the Discover Module in MapInfo with parameters defined in Table A6.

RC Hole Name/ Length Meters	From Meters	To Meters	Interval Meters	Silver Gpt	Hole Average Silver Gpt	Maximum 1.5 Meter Interval: Silver Gpt
DLS11RC001	24.0	51.0	27.0	14		
DLS11RC001	60.0	96.0	36.0	16		
Including	60.0	82.5	22.5	19		
DLS11RC001/96.0			63.0	15	12	55
DLS11RC002	22.5	43.5	21.0	12		
DLS11RC002	51.0	73.5	22.5	22		
Including	51.0	69.0	18.0	25		
DLS11RC002	79.5	94.5	15.0	10		
DLS11RC002/103.5			58.5	15	11	47
DLS11RC003	0.0	9.0	9.0	8		
DLS11RC003	48.0	63.0	15.0	11		
DLS11RC003	69.0	79.5	10.5	15		
DLS11RC003/100.5			34.5	11	7	37
DLS11RC004	10.5	45.0	34.5	10	7	27
DLS11RC004/100.5			34.5	10	7	27
DLS11RC005	0.0	51.0	51.0	13		
Including	0.0	22.5	22.5	19		
DLS11RC005/100.5			51.0	13	8	43
DLS11RC006	0.0	78.0	78.0	11		
Including	4.5	15.0	10.5	17		
Including	24.0	43.5	19.5	15		
DLS11RC006/79.5			78.0	11	10	32
DLS11RC007	0.0	57.0	57.0	25		
Including	36.0	51.0	15.0	49		
DLS11RC007/93.0			57.0	25	17	141

DLS11RC008	0.0	66.0	66.0	12		
Including	34.5	58.5	24.0	16		
DLS11RC008/100.5			66.0	12	10	64
DLS11RC009	4.5	13.5	9.0	10		
DLS11RC009/90.0			9.0	10	5	22
DLS11RC010	0.0	54.0	54.0	8		
DLS11RC010	67.5	82.5	15.0	8		
DLS11RC010/102.0			69.0	8	7	16
DLS11RC011	0.0	54.0	54.0	11		
Including	7.5	42.0	34.5	13		
DLS11RC011/102.0			54.0	11	8	22
DLS11RC012	0.0	52.5	52.5	9		
DLS11RC012/87.0			52.5	9	7	20
DLS11RC013	22.5	70.5	48.0	13		
Including	43.5	52.5	9.0	31		
DLS11RC013/102.0			48.0	13	9	49
DLS11RC014	1.5	102.0	100.5	30		
Including	12.0	27.0	15.0	57		
Including	31.5	99.0	67.5	30		
DLS11RC014/102.0			100.5	30	30	140
DLS11RC015	0.0	102.0	102.0	20		
Including	1.5	13.5	12.0	14		
Including	31.5	52.5	21.0	49		
Including	57.0	67.5	10.5	13		
Including	90.0	102.0	12.0	21		
DLS11RC015/102.0			102.0	20	20	132
DLS11RC016	0.0	37.5	37.5	17		
Including	7.5	31.5	24.0	22		
DLS11RC016/82.5			37.5	17	11	60
DLS11RC017	16.5	52.5	36.0	10		

DLS11RC017	72.0	91.5	19.5	7		
DLS11RC017/102.0			55.5	9	7	25
DLS11RC018	0.0	18.0	18.0	7		
DLS11RC018/93.0	0.0	18.0	18.0	7	4	14
DLS11RC019	1.5	27.0	25.5	9		
DLS11RC019	67.5	99.0	31.5	13		
Including	72.0	88.5	16.5	16		
DLS11RC019/99.0			57.0	11	9	27
DLS11RC020	1.5	55.5	54.0	11		
DLS11RC020	3.0	13.5	10.5	15		
DLS11RC020/90.0			54.0	11	8	50
DLS11RC021	0.0	87.0	87.0	18		
Including	12.0	24.0	12.0	15		
Including	51.0	82.5	31.5	32		
DLS11RC021/87.0			87.0	18	18	148
DLS11RC022	0.0	22.5	22.5	8		
DLS11RC022	30.0	43.5	13.5	8		
DLS11RC022	67.5	84.0	16.5	7		
DLS11RC022/90.0			52.5	8	7	19
DLS11RC023/100.5					4	10
DLS11RC024/31.5					4	9
DLS11RC025/99.0					2	6
DLS11RC026	15.0	63.0	48.0	7		
DLS11RC026/100.5			48.0	7	6	13
DLS11RC027	18.0	28.5	10.5	6		
DLS11RC027/102.0			10.5	6	4	10
DLS11RC028	36.0	82.5	46.5	15		
DLS11RC028/102.0			46.5	15	11	69
DLS11RC029	9.0	103.5	94.5	18		
Including	19.5	97.5	78.0	20		

<i>DLS11RC029/108.0</i>			94.5	18	17	55
-------------------------	--	--	-------------	-----------	-----------	-----------

TABLE A2. Gold results for DLS11RC001 to 029 from the West Zone of the **Don Luis Property**, Sonora, Mexico. Total length of these 29 RC holes is 2,748 meters. All gold analyzes in grams per tonne (gpt) were done by certified Pioneer Laboratories Inc. of Richmond, BC, Canada. Black entries used a cutoff of 0.05 gpt and red (including) entries used a cutoff of 0.10 gpt. Data was composited using the Discover Module in MapInfo with parameters defined in Table A6.

RC Hole Name/ Length Meters	From Meters	To Meters	Interval Meters	Gold Gpt	Hole Average Gold Gpt	Maximum 1.5 Meter Interval: Gold Gpt
DLS11RC001	82.5	96.0	13.5	0.116		
<i>DLS11RC001/96.0</i>			13.5	0.116	0.036	0.235
DLS11RC002	70.5	79.5	9.0	0.405		
<i>DLS11RC002/103.5</i>			9.0	0.405	0.164	6.120
DLS11RC003	0.0	36.0	36.0	0.098		
DLS11RC003	40.5	58.5	18.0	0.054		
<i>DLS11RC003/100.5</i>			54.0	0.083	0.045	0.380
DLS11RC004	4.5	28.5	24.0	0.453		
<i>DLS11RC004</i>	10.5	27.0	16.5	0.631		
DLS11RC004	55.5	64.5	9.0	0.060		
DLS11RC004	72.0	82.5	10.5	0.067		
<i>DLS11RC004/100.5</i>			43.5	0.278	0.133	2.540
DLS11RC005	0.0	31.5	31.5	0.212		
<i>DLS11RC005</i>	0.0	22.5	22.5	0.255		
<i>DLS11RC005/100.5</i>			31.5	0.212	0.105	1.780
DLS11RC006	0.0	31.5	31.5	0.190		
<i>DLS11RC006</i>	0.0	24.0	24.0	0.233		
DLS11RC006	39.0	79.5	40.5	0.121		
<i>DLS11RC006</i>	45.0	75.0	30.0	0.142		
<i>DLS11RC006/79.5</i>			72.0	0.152	0.140	0.880
<i>DLS11RC007/93.0</i>					0.115	1.740
<i>DLS11RC008/100.5</i>					0.165	3.610
DLS11RC009	10.5	24.0	13.5	0.324		

DLS11RC009/90.0			13.5	0.324	0.081	1.320
DLS11RC010	3.0	12.0	9.0	0.156		
DLS11RC010	24.0	48.0	24.0	0.434		
DLS11RC010	30.0	45.0	15.0	0.588		
DLS11RC010	52.5	64.5	12.0	0.163		
DLS11RC010	81.0	96.0	15.0	0.250		
DLS11RC010	82.5	94.5	12.0	0.297		
DLS11RC010/102.0			60.0	0.292	0.191	1.510
DLS11RC011/102.0					0.116	3.850
DLS11RC012	4.5	18.0	13.5	0.110		
DLS11RC012	37.5	46.5	9.0	0.522		
DLS11RC012	60.0	87.0	27.0	0.166		
DLS11RC012	60.0	78.0	18.0	0.213		
DLS11RC012/87.0			49.5	0.216	0.132	2.720
DLS11RC013	0.0	12.0	12.0	0.489		
DLS11RC013	0.0	10.5	10.5	0.551		
DLS11RC013	88.5	102.0	13.5	0.121		
DLS11RC013	91.5	102.0	10.5	0.135		
DLS11RC013/102.0			25.5	0.294	0.109	1.345
DLS11RC014/102.0					0.052	0.395
DLS11RC015	16.5	36.0	19.5	0.380		
DLS11RC015	16.5	31.5	15.0	0.482		
DLS11RC015/102.0			19.5	0.380	0.102	1.320
DLS11RC016	1.5	19.5	18.0	0.154		
DLS11RC016	55.5	70.5	15.0	0.108		
DLS11RC016/82.5			33.0	0.133	0.068	0.895
DLS11RC017	4.5	13.5	9.0	0.203		
DLS11RC017/102.0			9.0	0.203	0.060	0.495
DLS11RC018/93.0					0.013	0.135
DLS11RC019/99.0					0.029	0.760

DLS11RC020	79.5	90.0	10.5	0.634		
DLS11RC020/90.0			10.5	0.634	0.193	1.810
DLS11RC021	58.5	73.5	15.0	0.780		
DLS11RC021	58.5	73.5	15.0	0.780		
DLS11RC021/87.0			15.0	0.780	0.239	3.380
DLS11RC022	1.5	24.0	22.5	0.529		
DLS11RC022	31.5	48.0	16.5	0.119		
DLS11RC022/90.0			39.0	0.356	0.166	5.950
DLS11RC023	0.0	27.0	27.0	0.129		
DLS11RC023	0.0	12.0	12.0	0.122		
DLS11RC023/100.5			27.0	0.129	0.105	2.180
DLS11RC024/31.5					0.247	4.180
DLS11RC025	9.0	28.5	19.5	0.191		
DLS11RC025	13.5	25.5	12.0	0.263		
DLS11RC025	48.0	60.0	12.0	0.222		
DLS11RC025	48.0	58.5	10.5	0.246		
DLS11RC025/99.0			31.5	0.203	0.088	0.760
DLS11RC026	22.5	54.0	31.5	0.214		
DLS11RC026	28.5	49.5	21.0	0.293		
DLS11RC026	73.5	100.5	27.0	0.345		
DLS11RC026	73.5	84.0	10.5	0.408		
DLS11RC026/100.5			58.5	0.274	0.328	7.920
DLS11RC027	3.0	16.5	13.5	0.952		
DLS11RC027	3.0	16.5	13.5	0.952		
DLS11RC027	70.5	99.0	28.5	0.180		
DLS11RC027/102.0			42.0	0.428	0.190	3.740
DLS11RC028	45.0	55.5	10.5	0.133		
DLS11RC028/102.0			10.5	0.133	0.032	0.315
DLS11RC029/108.0					0.064	1.610

TABLE A3. Tungsten results for DLS11RC001 to 029 from the West Zone of the **Don Luis Property**, Sonora, Mexico. Total length of these 29 RC holes is 2,748 meters. Tungsten analyzes, presented in percent (%), were done in-house with a Niton XRF analyzer on prepared assay pulps. The presented values are qualitative and are not certified. A cutoff of 0.020% was used for compositing using the Discover Module in MapInfo (Table A6).

RC Hole Name/ Length Meters	From Meters	To Meters	Interval Meters	Tungsten %	Hole Average Tungsten %	Maximum 1.5 Meter Interval: Tungsten Gpt
DLS11RC001	3.0	85.5	82.5	0.030		
<i>DLS11RC001/96.0</i>			<i>82.5</i>	<i>0.030</i>	<i>0.028</i>	<i>0.121</i>
DLS11RC002	0.0	28.5	28.5	0.031		
DLS11RC002	33.0	103.5	70.5	0.031		
<i>DLS11RC002/103.5</i>			<i>99.0</i>	<i>0.031</i>	<i>0.030</i>	<i>0.211</i>
DLS11RC003	0.0	70.5	70.5	0.033		
DLS11RC003	76.5	100.5	24.0	0.022		
<i>DLS11RC003/100.5</i>			<i>94.5</i>	<i>0.030</i>	<i>0.029</i>	<i>0.139</i>
DLS11RC004	0.0	42.0	42.0	0.038		
DLS11RC004	49.5	100.5	51.0	0.025		
<i>DLS11RC004/100.5</i>			<i>93.0</i>	<i>0.031</i>	<i>0.030</i>	<i>0.087</i>
DLS11RC005	0.0	79.5	79.5	0.039		
DLS11RC005	87.0	99.0	12.0	0.025		
<i>DLS11RC005/100.5</i>			<i>91.5</i>	<i>0.037</i>	<i>0.035</i>	<i>0.170</i>
DLS11RC006	0.0	79.5	79.5	0.061		
<i>DLS11RC006/79.5</i>			<i>79.5</i>	<i>0.061</i>	<i>0.061</i>	<i>0.646</i>
DLS11RC007	0.0	33.0	33.0	0.032		
DLS11RC007	40.5	85.5	45.0	0.024		
<i>DLS11RC007/93.0</i>			<i>78.0</i>	<i>0.027</i>	<i>0.025</i>	<i>0.088</i>
DLS11RC008	1.5	66.0	64.5	0.043		
DLS11RC008	90.0	100.5	10.5	0.022		
<i>DLS11RC008/100.5</i>			<i>75.0</i>	<i>0.040</i>	<i>0.034</i>	<i>0.584</i>
DLS11RC009	0.0	72.0	72.0	0.031		
DLS11RC009	76.5	90.0	13.5	0.028		
<i>DLS11RC009/90.0</i>			<i>85.5</i>	<i>0.031</i>	<i>0.030</i>	<i>0.096</i>

DLS11RC010	0.0	75.0	75.0	0.028		
DLS11RC010/102.0			75.0	0.028	0.024	0.113
DLS11RC011	0.0	100.5	100.5	0.055		
DLS11RC011/102.0			100.5	0.055	0.054	0.361
DLS11RC012	0.0	87.0	87.0	0.041		
DLS11RC012/87.0			87.0	0.041	0.041	0.204
DLS11RC013	0.0	49.5	49.5	0.030		
DLS11RC013/102.0			49.5	0.030	0.023	0.069
DLS11RC014	0.0	31.5	31.5	0.024		
DLS11RC014	36.0	48.0	12.0	0.023		
DLS11RC014	75.0	100.5	25.5	0.024		
DLS11RC014/102.0			69.0	0.024	0.020	0.068
DLS11RC015	0.0	48.0	48.0	0.077		
DLS11RC015/102.0			48.0	0.077	0.043	1.285
DLS11RC016	0.0	81.0	81.0	0.025		
DLS11RC016/82.5			81.0	0.025	0.025	0.058
DLS11RC017	0.0	102.0	102.0	0.033		
DLS11RC017/102.0			102.0	0.033	0.033	0.051
DLS11RC018	0.0	84.0	84.0	0.033		
DLS11RC018/93.0			84.0	0.033	0.030	0.048
DLS11RC019	0.0	54.0	54.0	0.022		
DLS11RC019	61.5	70.5	9.0	0.021		
DLS11RC019	87.0	99.0	12.0	0.025		
DLS11RC019/99.0			75.0	0.023	0.020	0.037
DLS11RC020	0.0	90.0	90.0	0.037		
DLS11RC020/196.0			90.0	0.037	0.037	0.096
DLS11RC021	3.0	12.0	9.0	0.021		
DLS11RC021	24.0	87.0	63.0	0.032		
DLS11RC021/87.0			72.0	0.030	0.028	0.053
DLS11RC022	0.0	88.5	88.5	0.037		

DLS11RC022/90.0			88.5	0.037	0.037	0.174
DLS11RC023	0.0	100.5	100.5	0.031		
DLS11RC023/100.5			100.5	0.031	0.031	0.062
DLS11RC024	0.0	31.5	31.5	0.032		
DLS11RC024/31.5			31.5	0.032	0.032	0.057
DLS11RC025	0.0	97.5	97.5	0.034		
DLS11RC025/99.0			97.5	0.034	0.034	0.135
DLS11RC026	0.0	100.5	100.5	0.043		
DLS11RC026/100.5			100.5	0.043	0.043	0.155
DLS11RC027	0.0	102.0	102.0	0.045		
DLS11RC027/102.0			102.0	0.045	0.045	0.170
DLS11RC028	0.0	70.5	70.5	0.036		
DLS11RC028	91.5	102.0	10.5	0.027		
DLS11RC028/102.0			81.0	0.035	0.031	0.104
DLS11RC029	0.0	100.5	100.5	0.027		
DLS11RC029/108.0			100.5	0.027	0.026	0.075

TABLE A4. Molybdenum results for DLS11RC001 to 029 from the West Zone of the **Don Luis Property**, Sonora, Mexico. Total length of these 29 RC holes is 2,748 meters. All molybdenum analyzes, presented in percent (%), were done in-house with a Niton XRF analyzer on prepared assay pulps. The presented values are qualitative and are not certified. A cutoff of 0.005% was used for compositing using the Discover Module in MapInfo (Table A6).

RC Hole Name/ Length Meters	From Meters	To Meters	Interval Meters	Molybdenum %	Hole Average Molybdenum %	Maximum 1.5 Meter Interval: Molybdenum %
DLS11RC001/96.0					0.003	0.008
DLS11RC002	6.0	15.0	9.0	0.007		
DLS11RC002	85.5	99.0	13.5	0.010		
DLS11RC002/103.5			22.5	0.009	0.005	0.034
DLS11RC003	16.5	54.0	37.5	0.012		
DLS11RC003/100.5			37.5	0.012	0.006	0.037
DLS11RC004	16.5	31.5	15.0	0.012		
DLS11RC004/100.5			15.0	0.012	0.004	0.021

DLS11RC005	31.5	82.5	51.0	0.016		
DLS11RC005/100.5			51.0	0.016	0.010	0.068
DLS11RC006	6.0	79.5	73.5	0.013		
DLS11RC006/79.5			73.5	0.013	0.012	0.042
DLS11RC007	43.5	54.0	10.5	0.007		
DLS11RC007/93.0			10.5	0.007	0.003	0.013
DLS11RC008	13.5	25.5	12.0	0.007		
DLS11RC008/100.5			12.0	0.007	0.004	0.015
DLS11RC009	51.0	90.0	39.0	0.009		
DLS11RC009/90.0			39.0	0.009	0.005	0.017
DLS11RC010	30.0	45.0	15.0	0.011		
DLS11RC010	49.5	64.5	15.0	0.019		
DLS11RC010	81.0	100.5	19.5	0.013		
DLS11RC010/102.0			49.5	0.014	0.008	0.594
DLS11RC011	13.5	70.5	57.0	0.018		
DLS11RC011/102.0			57.0	0.018	0.012	0.074
DLS11RC012/87.0					0.003	0.026
DLS11RC013	36.0	54.0	18.0	0.009		
DLS11RC013	66.0	90.0	24.0	0.007		
DLS11RC013/102.0			42.0	0.008	0.005	0.020
DLS11RC014	63.0	72.0	9.0	0.006		
DLS11RC014/102.0			9.0	0.006	0.003	0.017
DLS11RC015	18.0	28.5	10.5	0.009		
DLS11RC015/102.0			10.5	0.009	0.003	0.019
DLS11RC016/82.5					0.001	0.009
DLS11RC017/102.0					0.001	0.010
DLS11RC018	1.5	13.5	12.0	0.007		
DLS11RC018/93.0			12.0	0.007	0.002	0.020
DLS11RC019	0.0	16.5	16.5	0.007		
DLS11RC019/99.0			16.5	0.007	0.003	0.015

DLS11RC020	0.0	42.0	42.0	0.012		
DLS11RC020/90.0			42.0	0.012	0.007	0.088
DLS11RC021	3.0	81.0	78.0	0.027		
DLS11RC021/87.0	3.0	81.0	78.0	0.027	0.024	0.120
DLS11RC022	0.0	31.5	31.5	0.015		
DLS11RC022	36.0	58.5	22.5	0.006		
DLS11RC022/90.0			54.0	0.011	0.007	0.049
DLS11RC023	9.0	39.0	30.0	0.011		
DLS11RC023/100.5			30.0	0.011	0.005	0.038
DLS11RC024	4.5	31.5	27.0	0.021		
DLS11RC024/31.5	4.5	31.5	27.0	0.021	0.018	0.133
DLS11RC025	0.0	33.0	33.0	0.018		
DLS11RC025	43.5	61.5	18.0	0.006		
DLS11RC025/99.0			51.0	0.014	0.008	0.055
DLS11RC026	15.0	48.0	33.0	0.015		
DLS11RC026/100.5			33.0	0.015	0.007	0.051
DLS11RC027	9.0	21.0	12.0	0.008		
DLS11RC027	28.5	42.0	13.5	0.006		
DLS11RC027/102.0			25.5	0.007	0.003	0.013
DLS11RC028	39.0	64.5	25.5	0.005		
DLS11RC028	70.5	79.5	9.0	0.016		
DLS11RC028/102.0			34.5	0.008	0.005	0.025
DLS11RC029/108.0					0.001	0.005

TABLE A5. Lead results for DLS11RC001 to 029 from the West Zone of the **Don Luis Property**, Sonora, Mexico. Total length of these 29 RC holes is 2,748 meters. All lead analyzes, presented in percent (%), were done in-house with a Niton XRF analyzer on prepared assay pulps. The presented values are qualitative and are not certified. A cutoff of 0.10% was used for compositing using the Discover Module in MapInfo (Table A6).

RC Hole Name/ Length Meters	From Meters	To Meters	Interval Meters	Lead %	Hole Average Lead %	Maximum 1.5 Meter Interval: Lead %
DLS11RC001	3.0	93.0	90.0	0.18		
DLS11RC001/96.0			90.0	0.18	0.17	0.39
DLS11RC002	0.0	57.0	57.0	0.17		
DLS11RC002	64.5	103.5	39.0	0.16		
DLS11RC002/103.5			96.0	0.17	0.16	0.37
DLS11RC003	0.0	75.0	75.0	0.24		
DLS11RC003	90.0	100.5	10.5	0.15		
DLS11RC003/100.5			85.5	0.23	0.20	0.76
DLS11RC004	0.0	45.0	45.0	0.36		
DLS11RC004	51.0	100.5	49.5	0.18		
DLS11RC004/100.5			94.5	0.27	0.26	2.32
DLS11RC005	0.0	100.5	100.5	0.34		
DLS11RC005/100.5			100.5	0.34	0.34	3.20
DLS11RC006	0.0	79.5	79.5	0.23		
DLS11RC006/79.5			79.5	0.23	0.23	0.55
DLS11RC007	0.0	31.5	31.5	0.19		
DLS11RC007	73.5	93.0	19.5	0.11		
DLS11RC007/93.0			51.0	0.16	0.13	0.43
DLS11RC008	0.0	100.5	100.5	0.21		
DLS11RC008/100.5			100.5	0.21	0.21	0.98
DLS11RC009	0.0	87.0	87.0	0.14		
DLS11RC009/90.0			87.0	0.14	0.14	0.35
DLS11RC010	0.0	100.5	100.5	0.32		
DLS11RC010/102.0			100.5	0.32	0.31	1.19
DLS11RC011/102.0					0.20	0.80

DLS11RC012	0.0	61.5	61.5	0.18		
DLS11RC012	67.5	87.0	19.5	0.19		
DLS11RC012/87.0			81.0	0.19	0.18	0.54
DLS11RC013	0.0	60.0	60.0	0.21		
DLS11RC013	87.0	100.5	13.5	0.24		
DLS11RC013/102.0			73.5	0.22	0.17	0.65
DLS11RC014	0.0	42.0	42.0	0.19		
DLS11RC014	63.0	100.5	37.5	0.18		
DLS11RC014/102.0			79.5	0.19	0.16	0.58
DLS11RC015	0.0	54.0	54.0	0.20		
DLS11RC015	73.5	82.5	9.0	0.22		
DLS11RC015/102.0			63.0	0.20	0.15	0.85
DLS11RC016	22.5	82.5	60.0	0.22		
DLS11RC016/82.5			60.0	0.22	0.19	0.54
DLS11RC017	7.5	19.5	12.0	0.21		
DLS11RC017	60.0	79.5	19.5	0.14		
DLS11RC017/102.0			31.5	0.17	0.11	0.44
DLS11RC018/93.0					0.02	0.08
DLS11RC019	21.0	42.0	21.0	0.24		
DLS11RC019	57.0	75.0	18.0	0.17		
DLS11RC019	87.0	99.0	12.0	0.19		
DLS11RC019/99.0			51.0	0.20	0.14	0.53
DLS11RC020	0.0	90.0	90.0	0.20		
DLS11RC020/90.0			90.0	0.20	0.20	0.54
DLS11RC021	0.0	87.0	87.0	0.32		
DLS11RC021/87.0			87.0	0.32	0.32	10.64
DLS11RC022	0.0	88.5	88.5	0.24		
DLS11RC022/90.0			88.5	0.24	0.24	10.13
DLS11RC023	0.0	88.5	88.5	0.21		
DLS11RC023/100.5			88.5	0.21	0.19	0.85

DLS11RC024	1.5	31.5	30.0	0.20		
DLS11RC024/31.5			30.0	0.20	0.20	0.62
DLS11RC025	0.0	25.5	25.5	0.30		
DLS11RC025	54.0	94.5	40.5	0.13		
DLS11RC025/99.0			66.0	0.19	0.15	0.60
DLS11RC026	15.0	100.5	85.5	0.21		
DLS11RC026/100.5			85.5	0.21	0.19	0.96
DLS11RC027	0.0	24.0	24.0	0.14		
DLS11RC027	34.5	100.5	66.0	0.16		
DLS11RC027/102.0			90.0	0.15	0.15	0.41
DLS11RC028	0.0	79.5	79.5	0.15		
DLS11RC028/102.0			79.5	0.15	0.15	0.39
DLS11RC029	0.0	10.5	10.5	0.21		
DLS11RC029	19.5	51.0	31.5	0.15		
DLS11RC029/108.0			42.0	0.17	0.10	0.32

TABLE A6. Assay composite constraints on RC drill hole assay data from the **Don Luis Property**, Sonora, Mexico. Composite calculations were done in the Discover module of MapInfo.

TABLE NO COLOR	ELEMENT	MINIMUM GRADE	MINIMUM LENGTH	DILUTION ALLOWED	EDGE GRADE
A1 BLACK	SILVER	6 GPT	9 METERS	3 M @ 3 GPT	5 GPT
A1 RED	SILVER	12 GPT	9 METERS	3 M @ 6 GPT	10 GPT
A2 BLACK	GOLD	.050 GPT	9 METERS	3 M @ .025 GPT	.020 GPT
A2 RED	GOLD	.100 GPT	9 METERS	3 M @ .050 GPT	.030 GPT
A3 BLACK	TUNGSTEN	0.020%	9 METERS	3 M @ 100 GPT	75 GPT
A4 BLACK	MOLYBDENUM	0.005%	9 METERS	3 M @ 25 GPT	20 GPT
A5 BLACK	LEAD	0.10%	9 METERS	3 M @ 500 GPT	400 GPT

TABLE A7. Best assays for silver, gold, tungsten, molybdenum and lead from RC drill holes DLS11RC001 to 029, **Don Luis Property**, Sonora, Mexico.

RC Hole Name/ Length Meters	Silver Gpt Best Red	Gold Gpt Best Red	Tungsten % Best Red	Molybdenum % Best Red	Lead % Best Red
DLS11RC004/100.5	7	0.13	0.030	0.004	0.26
DLS11RC005/100.5	8	0.11	0.035	0.010	0.34
DLS11RC006/79.5	10	0.14	0.061	0.012	0.23
DLS11RC007/93.0	17	0.12	0.025	0.003	0.13
DLS11RC010/102.0	7	0.19	0.024	0.008	0.31
DLS11RC011/102.0	8	0.12	0.054	0.012	0.20
DLS11RC014/102.0	30	0.05	0.020	0.003	0.16
DLS11RC015/102.0	20	0.10	0.043	0.003	0.15
DLS11RC021/87.0	18	0.24	0.028	0.024	0.32
DLS11RC022/90.0	7	0.11	0.037	0.007	0.24
DLS11RC024/31.5	4	0.25	0.032	0.018	0.20
DLS11RC026/100.5	6	0.33	0.043	0.007	0.19
DLS11RC027/102.0	4	0.19	0.045	0.003	0.15
DLS11RC029/108.0	17	0.03	0.026	0.001	0.10