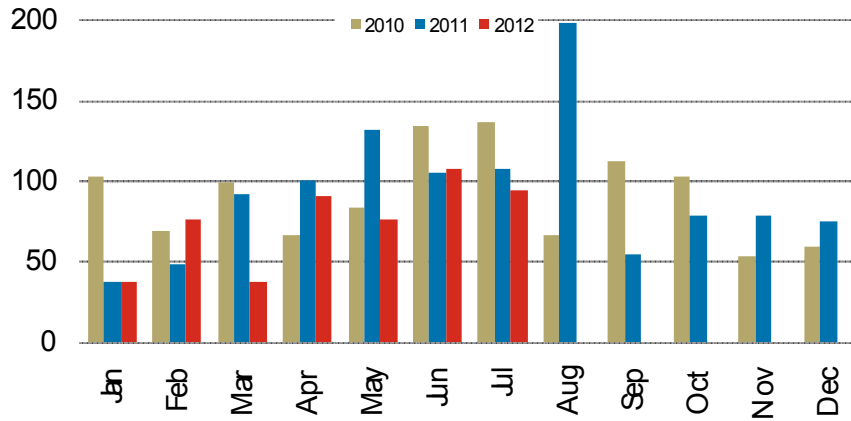


## Monthly Housing Starts



Source: CMHC

TABLE 1: JULY

Municipality	Single-Detached			Semi-Detached			Row			Apartment			Total		
	2011	2012	%	2011	2012	%	2011	2012	%	2011	2012	%	2011	2012	%
Fort Erie	6	10	67 %	0	0	*	3	0	-100 %	0	0	*	9	10	11 %
Port Colborne	1	2	100 %	0	0	*	0	0	*	0	0	*	1	2	100 %
Wainfleet	2	2	*	0	0	*	0	0	*	0	0	*	2	2	*
Pelham	2	1	-50 %	0	0	*	0	0	*	0	0	*	2	1	-50 %
Welland	4	15	275 %	0	0	*	0	0	*	0	0	*	4	15	275 %
Thorold	2	4	100 %	0	0	*	0	0	*	0	0	*	2	4	100 %
Niagara Falls	19	22	16 %	2	2	*	5	4	-20 %	0	0	*	26	28	8 %
Niagara-on-the-Lake	18	10	-44 %	0	0	*	4	6	50 %	0	0	*	22	16	-27 %
St. Catharines	7	3	-57 %	0	0	*	0	5	*	0	0	*	7	8	14 %
Lincoln	13	9	-31 %	0	0	*	20	0	-100 %	0	0	*	33	9	-73 %
<b>St. Catharines-Niagara CMA</b>	<b>74</b>	<b>78</b>	<b>5 %</b>	<b>2</b>	<b>2</b>	<b>*</b>	<b>32</b>	<b>15</b>	<b>-53 %</b>	<b>0</b>	<b>0</b>	<b>*</b>	<b>108</b>	<b>95</b>	<b>-12 %</b>
Grimsby	10	2	-80 %	0	0	*	0	0	*	0	0	*	10	2	-80 %
West Lincoln <sup>1</sup>	*	*	*	*	*	*	*	*	*	*	*	*	*	*	*
<b>Niagara Region<sup>2</sup></b>	<b>84</b>	<b>80</b>	<b>-5 %</b>	<b>2</b>	<b>2</b>	<b>*</b>	<b>32</b>	<b>15</b>	<b>-53 %</b>	<b>0</b>	<b>0</b>	<b>*</b>	<b>118</b>	<b>97</b>	<b>-18 %</b>

TABLE 2: YEAR-TO-DATE (JANUARY-JULY)

Municipality	Single-Detached			Semi-Detached			Row			Apartment			Total		
	2011	2012	%	2011	2012	%	2011	2012	%	2011	2012	%	2011	2012	%
Fort Erie	44	41	-7 %	0	0	*	6	8	33 %	0	0	*	50	49	-2 %
Port Colborne	1	7	600 %	0	0	*	0	0	*	0	0	*	1	7	600 %
Wainfleet	10	8	-20 %	0	0	*	0	0	*	0	0	*	10	8	-20 %
Pelham	23	12	-48 %	2	0	-100 %	0	4	*	0	0	*	25	16	-36 %
Welland	40	43	8 %	2	4	100 %	14	16	14 %	25	0	-100 %	81	63	-22 %
Thorold	30	17	-43 %	0	8	*	7	11	57 %	0	0	*	37	36	-3 %
Niagara Falls	110	96	-13 %	6	6	*	48	52	8 %	0	0	*	164	154	-6 %
Niagara-on-the-Lake	46	58	26 %	2	2	*	24	25	4 %	0	0	*	72	85	18 %
St. Catharines	32	28	-13 %	2	0	-100 %	14	25	79 %	42	0	-100 %	90	53	-41 %
Lincoln	45	41	-9 %	4	4	*	44	6	-86 %	0	0	*	93	51	-45 %
<b>St. Catharines-Niagara CMA</b>	<b>381</b>	<b>351</b>	<b>-8 %</b>	<b>18</b>	<b>24</b>	<b>33 %</b>	<b>157</b>	<b>147</b>	<b>-6 %</b>	<b>67</b>	<b>0</b>	<b>-100 %</b>	<b>623</b>	<b>522</b>	<b>-16 %</b>
Grimsby	66	24	-64 %	0	0	*	0	70	*	0	0	*	66	94	42 %
West Lincoln <sup>1</sup>	*	*	*	*	*	*	*	*	*	*	*	*	*	*	*
<b>Niagara Region<sup>2</sup></b>	<b>447</b>	<b>375</b>	<b>-16 %</b>	<b>18</b>	<b>24</b>	<b>33 %</b>	<b>157</b>	<b>217</b>	<b>38 %</b>	<b>67</b>	<b>0</b>	<b>-100 %</b>	<b>689</b>	<b>616</b>	<b>-11 %</b>

Source: CMHC

\*Not applicable

\*\*Year-over-year change greater than 1000 per cent

<sup>1</sup>Housing starts data for West Lincoln are collected and reported only on a quarterly basis (i.e. in March, June, September, December)

<sup>2</sup>Housing starts data for Niagara Region are accurate at each end-of-quarter month and understated in other months due to reporting conventions used for West Lincoln as described in the note (1) above