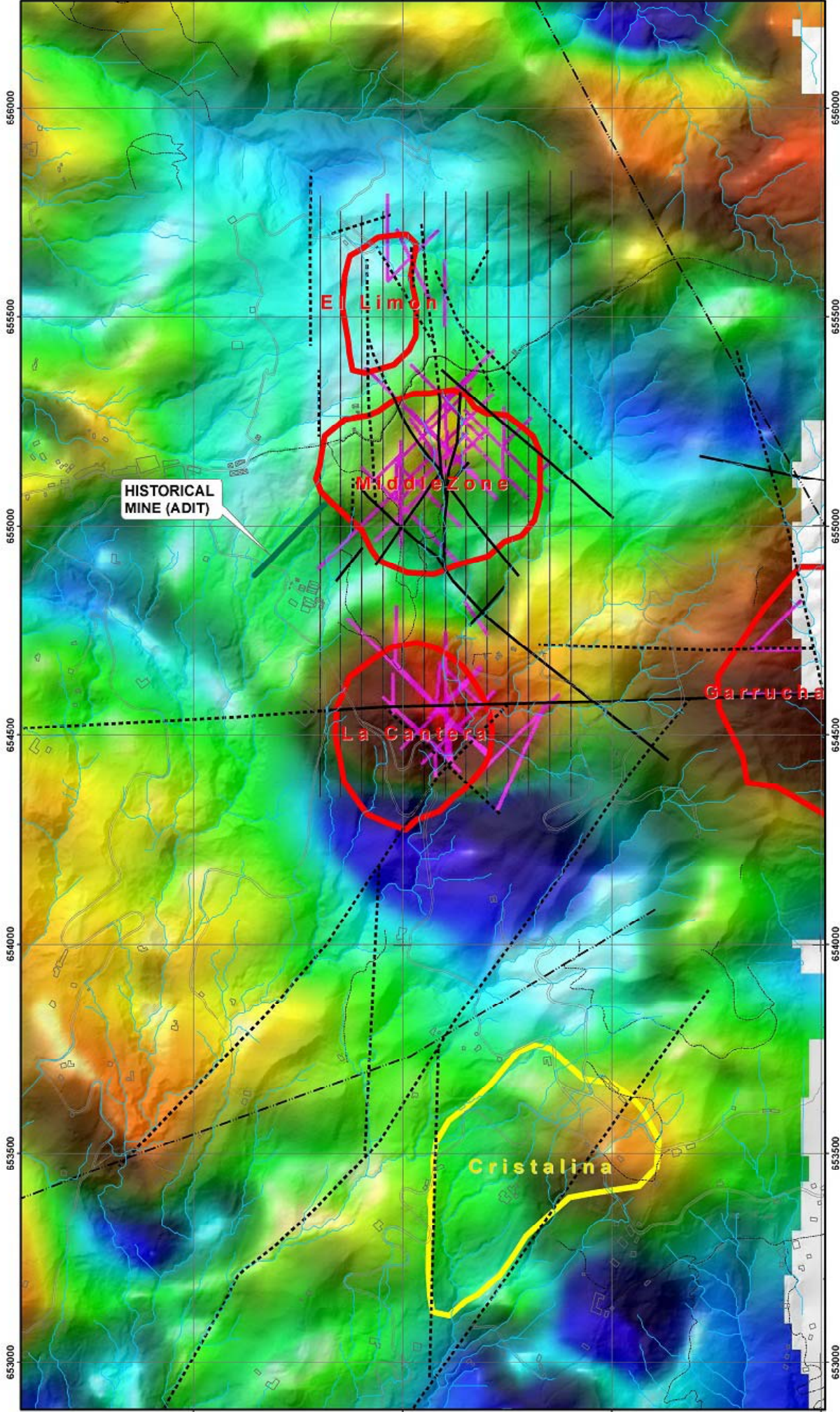


418500 419000 419500 420000

La Mina Geophysical 2012 magnetic susceptibility



HISTORICAL
MINE (ADIT)

El Limon

Middle Zone

La Cantera

Garrucha

Cristalina

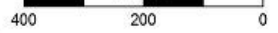
Legend

- Stream
- Infrastructure
- Road
- Trail
- Measured Fault
- Inferred Fault
- Regional Structure
- Cristalina Target
- targets

Projection UTM 12N,
Datum WGS84

1:5,000

Meters



418500 419000 419500 420000

653000

653500

654000

654500

655000

655500

655500

656000

653000

653500

654000

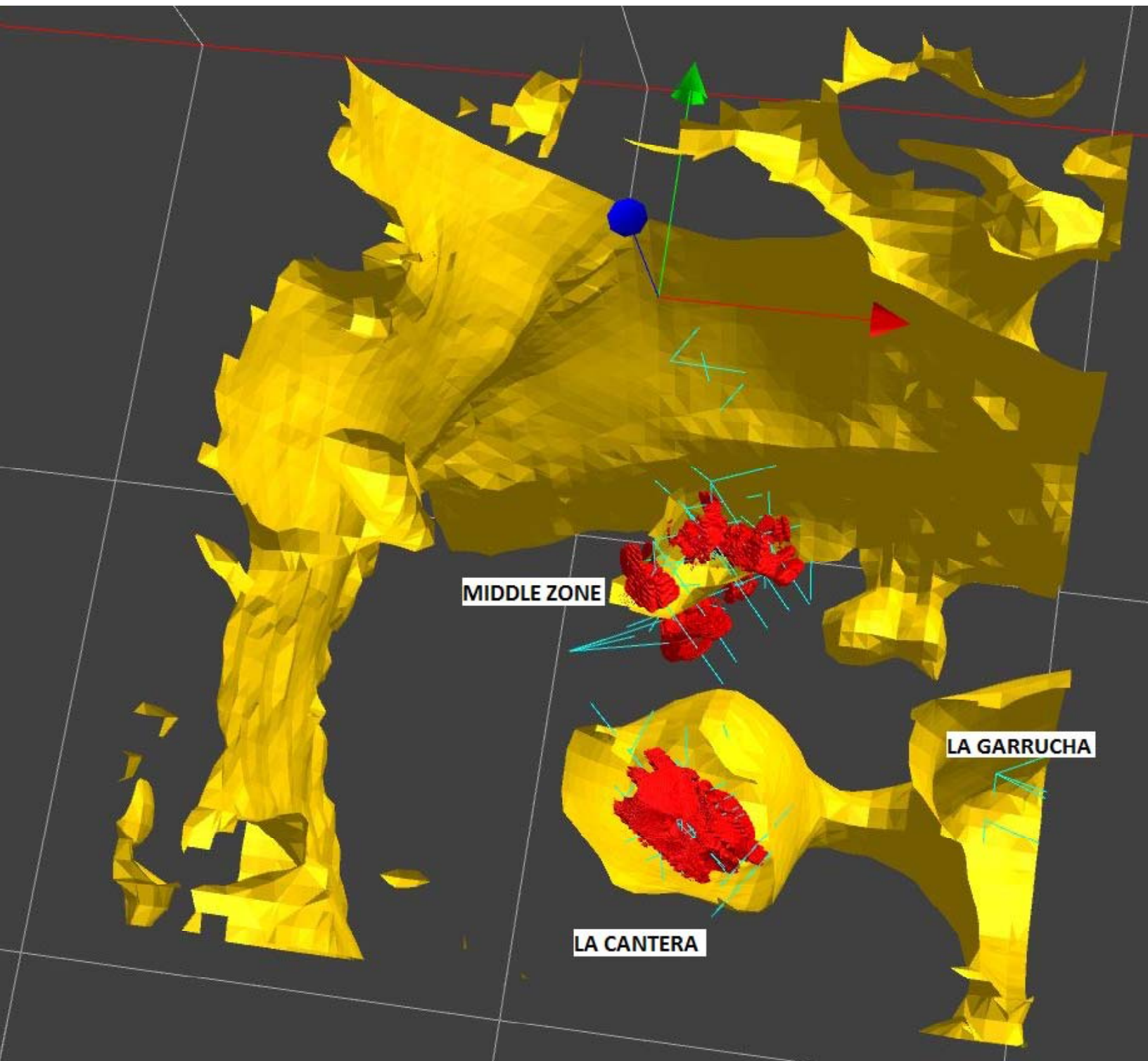
654500

655000

655500

655500

656000



MIDDLE ZONE

LA CANTERA

LA GARRUCHA

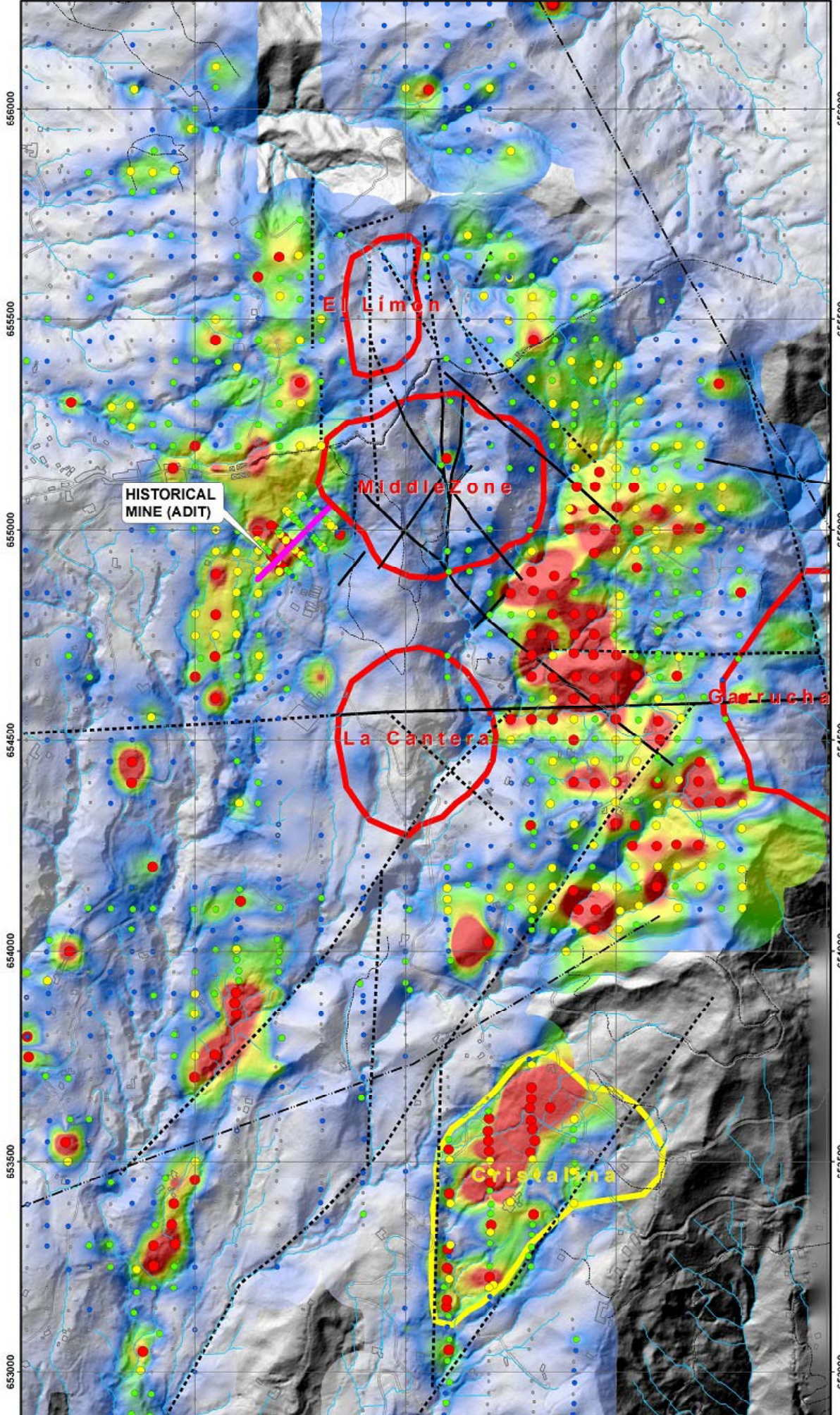
418500

419000

419500

420000

La Mina Soil As (ppm) Top



- Legend**
- Soil As (ppm)
 - 1 - 10.0
 - 10.1 - 25.0
 - 25.1 - 60.0
 - 60.1 - 100
 - 101 - 793
 - Stream
 - Infrastructure
 - Road
 - Trail
 - Measured Fault
 - Inferred Fault
 - Regional_Structure
 - Cristalina Target
 - targets
 - As (ppm)

Projection UTM 12N,
Datum WGS84
1:5,000
Meters

418500

419000

419500

420000

653000

653500

654000

654500

655000

655500

656000

653000

653500

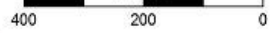
654000

654500

655000

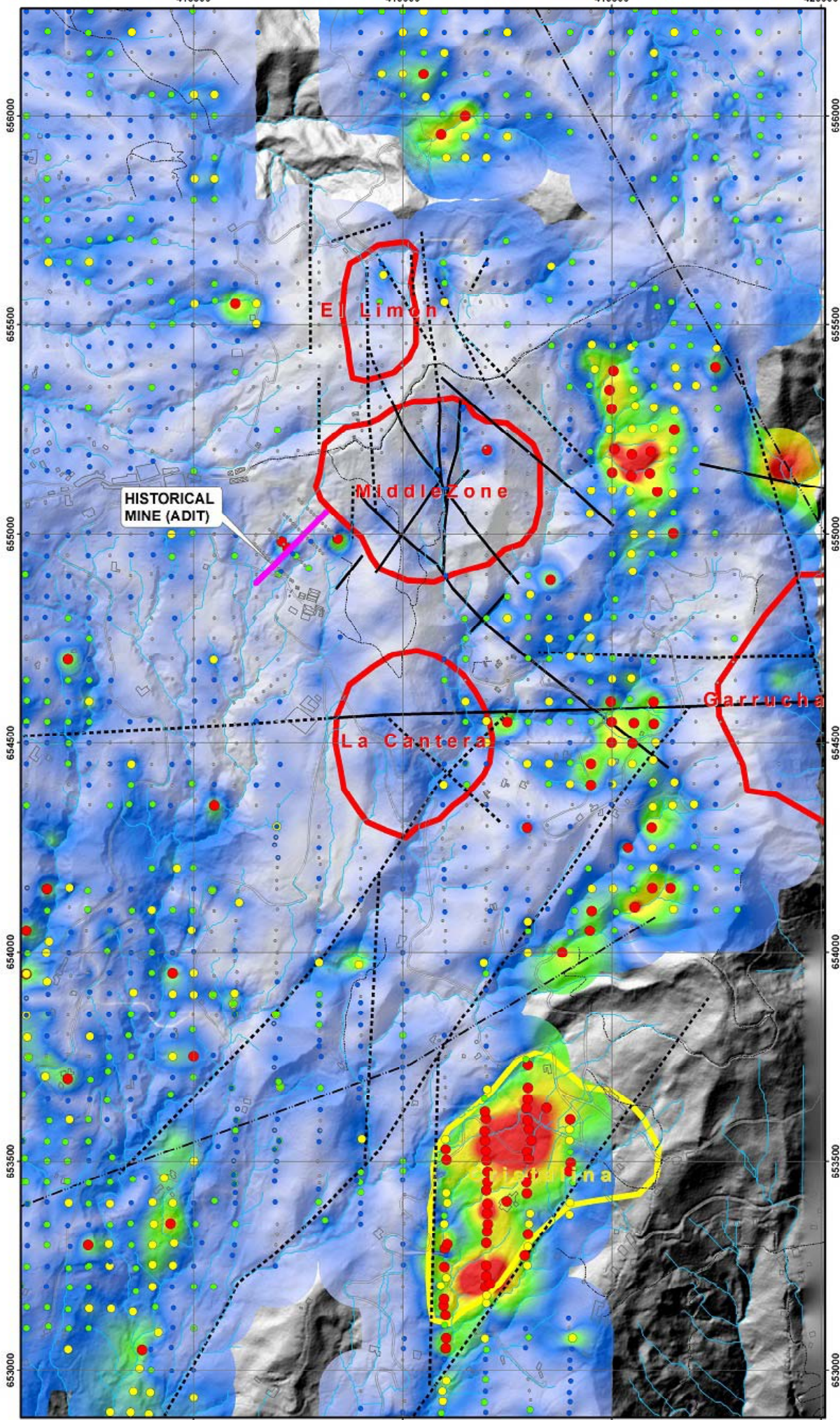
655500

656000



418500 419000 419500 420000

La Mina Soil Zn (ppm) Top

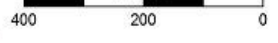


- Legend**
- Soil Zn (ppm)
 - 3 - 58
 - 58.1 - 108
 - 109 - 174
 - 175 - 309
 - 310 - 1630
 - Stream
 - Infrastructure
 - Road
 - Trail
 - Measured Fault
 - Inferred Fault
 - Regional_Structure
 - Cristalina Target
 - Value
 - High : 600
 - Low : 3

Projection UTM 12N,
Datum WGS84

1:5,000

Meters



418500 419000 419500 420000

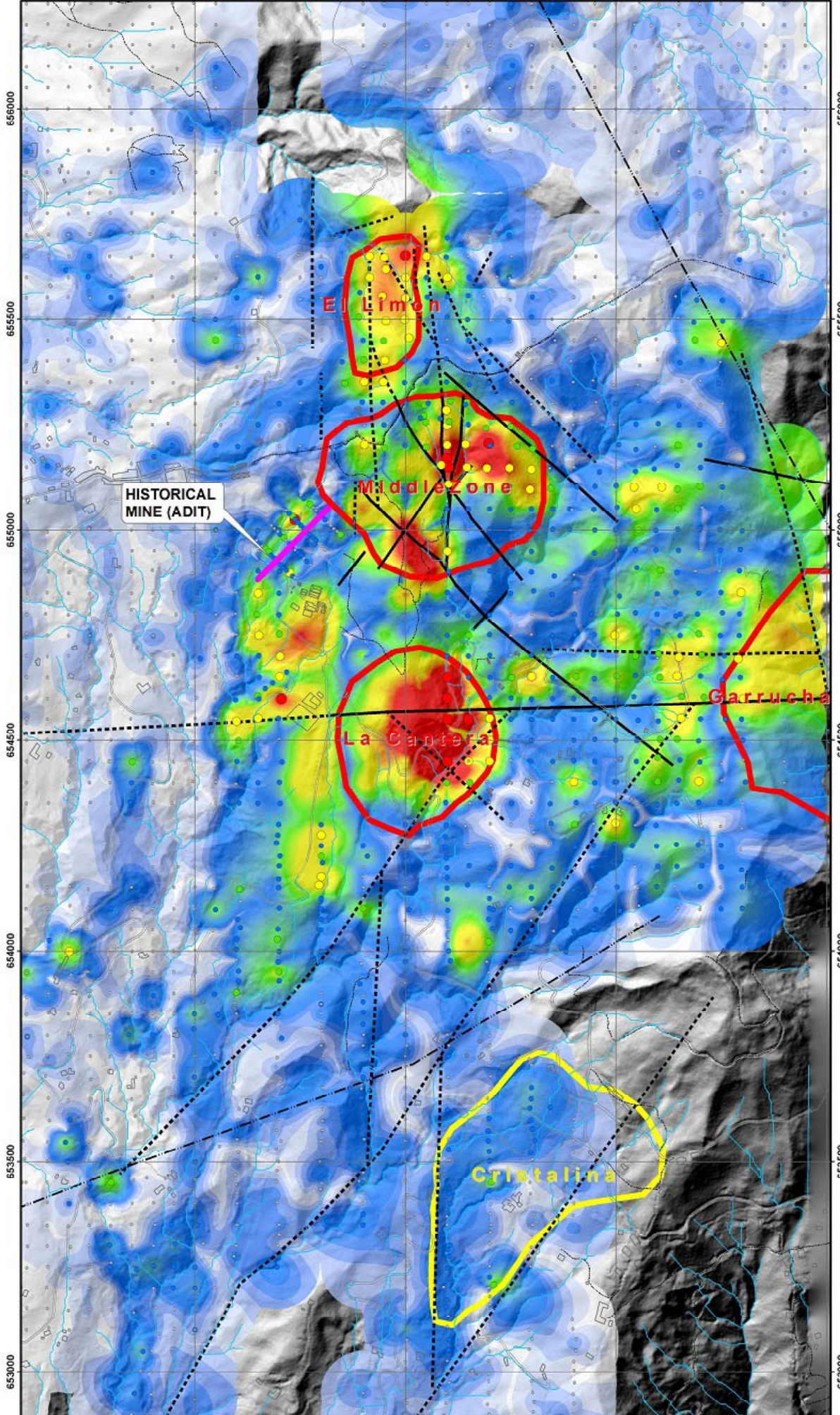
418500

419000

419500

420000

La Mina Soil Au (ppm) Top

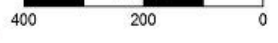


- Legend**
- Soil Au (ppm)
 - 0.0025 - 0.0100
 - 0.0101 - 0.0500
 - 0.0501 - 0.1000
 - 0.1001 - 0.4000
 - 0.4001 - 10.0000
 - Stream
 - Infrastructure
 - Road
 - Trail
 - Measured Fault
 - .. Inferred Fault
 - Regional_Structure
 - Cristalina Target
 - targets
 - Value

Projection UTM 12N,
Datum WGS84

1:5,000

Meters



418500

419000

419500

420000

653000

653500

654000

654500

655000

655500

656000