

Figure 1

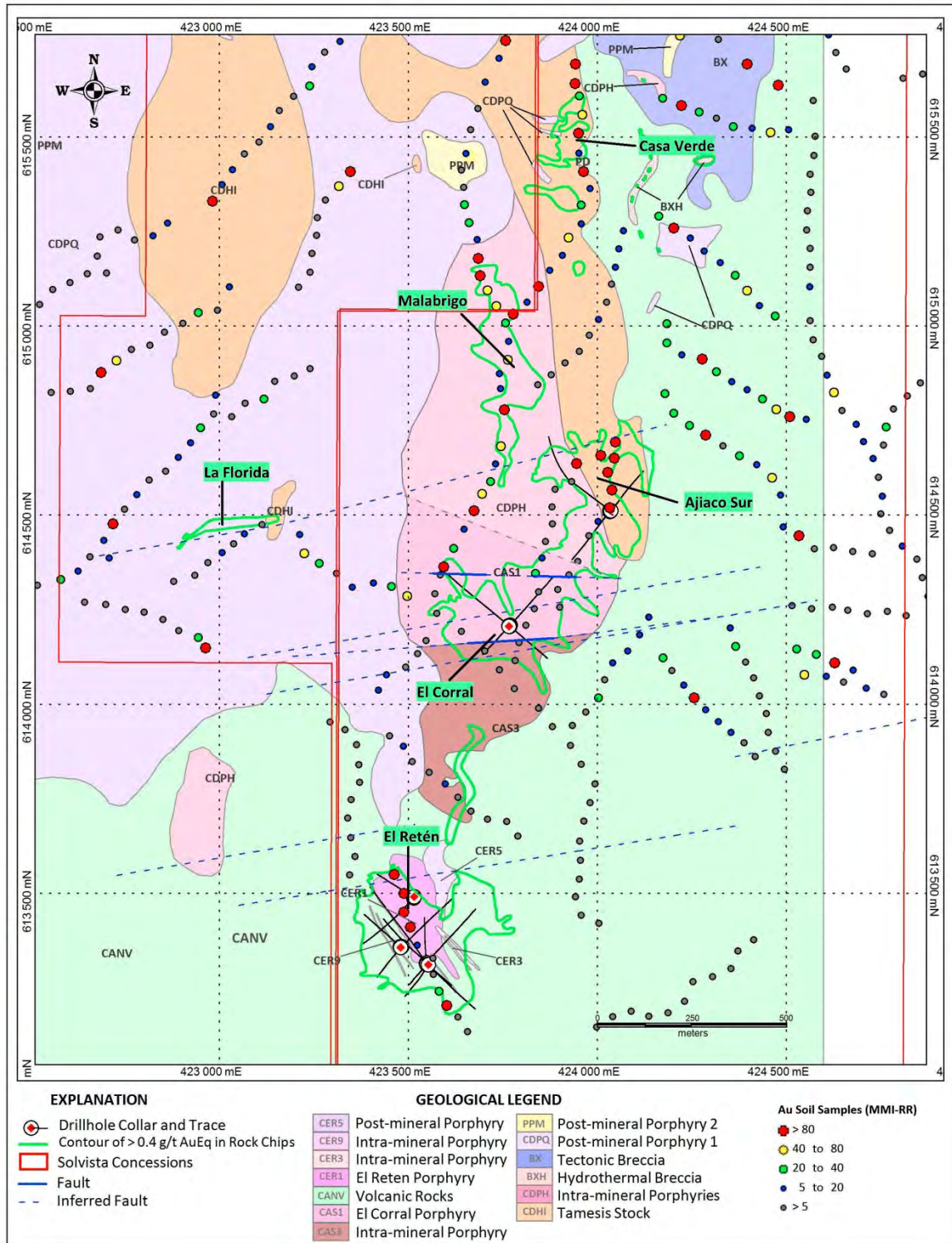


Figure 1: Approximate representation of the Caramanta Porphyry Cluster showing surface traces of all drill holes completed as part of the 8,000 metre, Phase 1 program, as well as interpreted surface geology and geochemical anomalies. The green lines show the newly defined surface expression of the five drill targets based on a 0.4 g/t AuEq cutoff. Drilling is planned at Malabrigo and Casa Verde during Q3 2013.

Figure 2

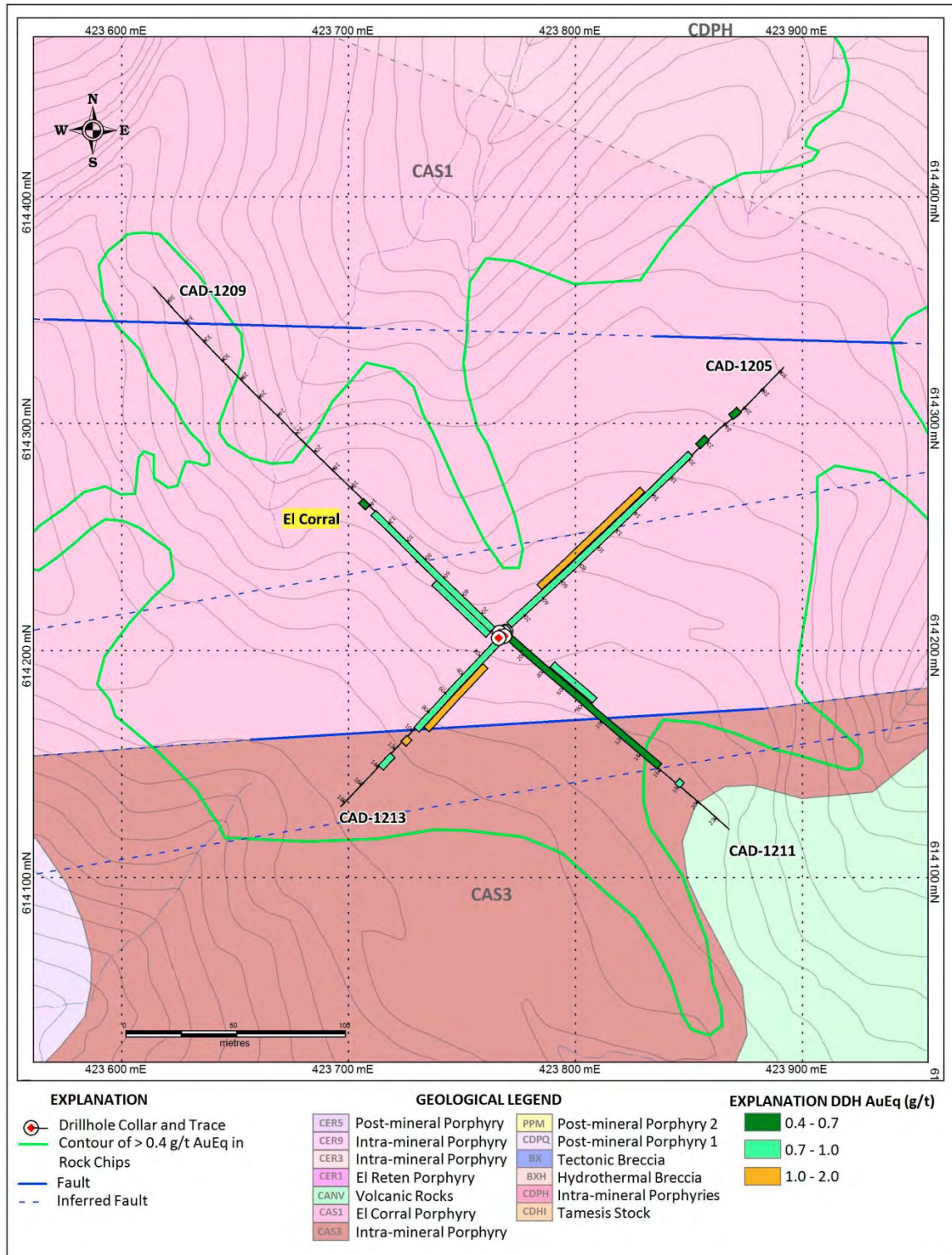


Figure 2: Approximate representation of the El Corral target area showing surface traces of all drill holes completed to-date as well as interpreted surface geology and geochemical anomalies. The green line shows the surface expression of the El Corral anomaly based on a 0.4 g/t AuEq cutoff.

Figure 3

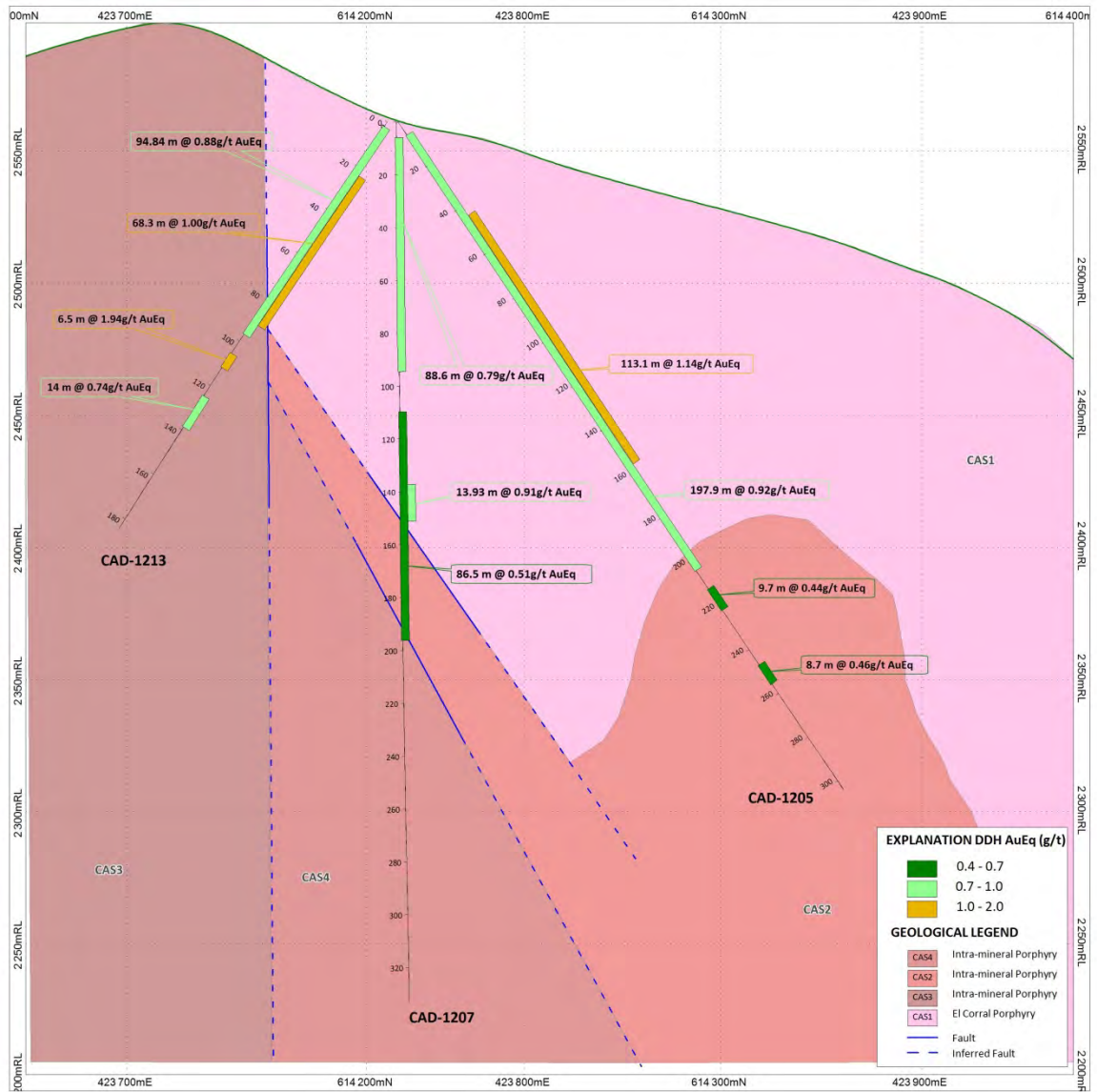


Figure 3: Northeast-southwest cross-section (approximate representation) showing drill holes CAD-1205, CAD-1207, and CAD-1213.