

FIGURE 1: Geological map of the Lac des Iles mine block intrusion showing the surface projection of the Offset Zone and related underground drilling and exploration targets and the surface location of other mineralized zones and exploration targets discussed in this news release.

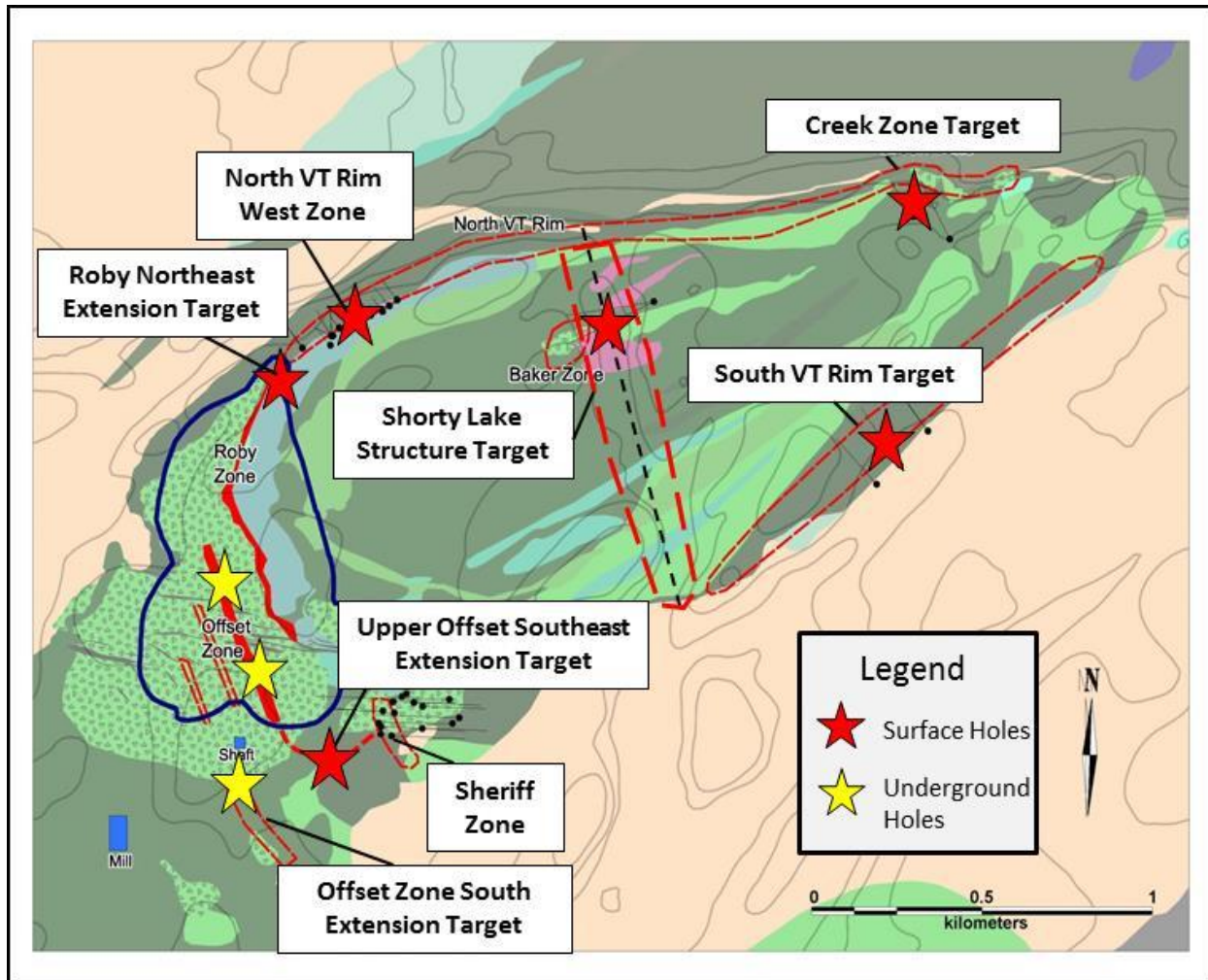


FIGURE 2: Longitudinal view, looking east, of the currently defined limits to the Offset Zone (large red solid) showing location of the Q1/Q2 2013 extension drilling program south of the shaft (500 and 600 series) and infill drilling (800 series) on the Phase 1 Offset Zone reserves (darker red irregular polygon).

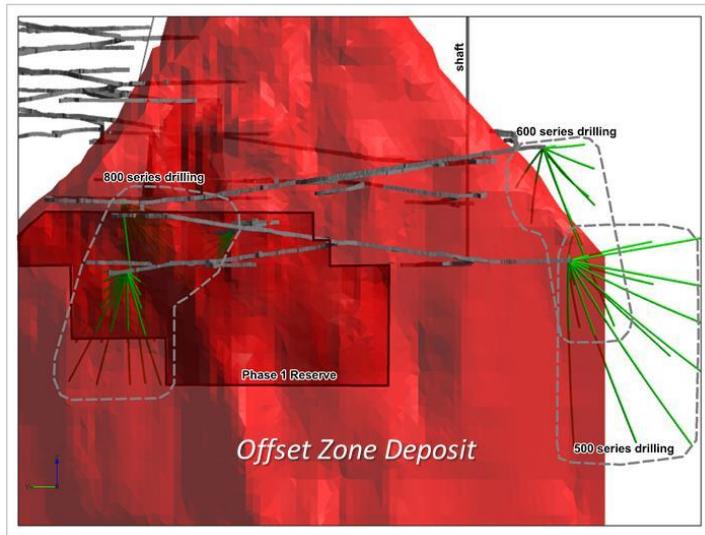


FIGURE 3: Plan view geological map of the southwestern part of the mine block intrusion showing the surface projections of the northern and southern resource shells of the Sheriff Zone deposit relative to the Roby Zone, the Offset fault and the shaft.

