

Figure 1: Inova Resources Tenements – highlighting Confucius

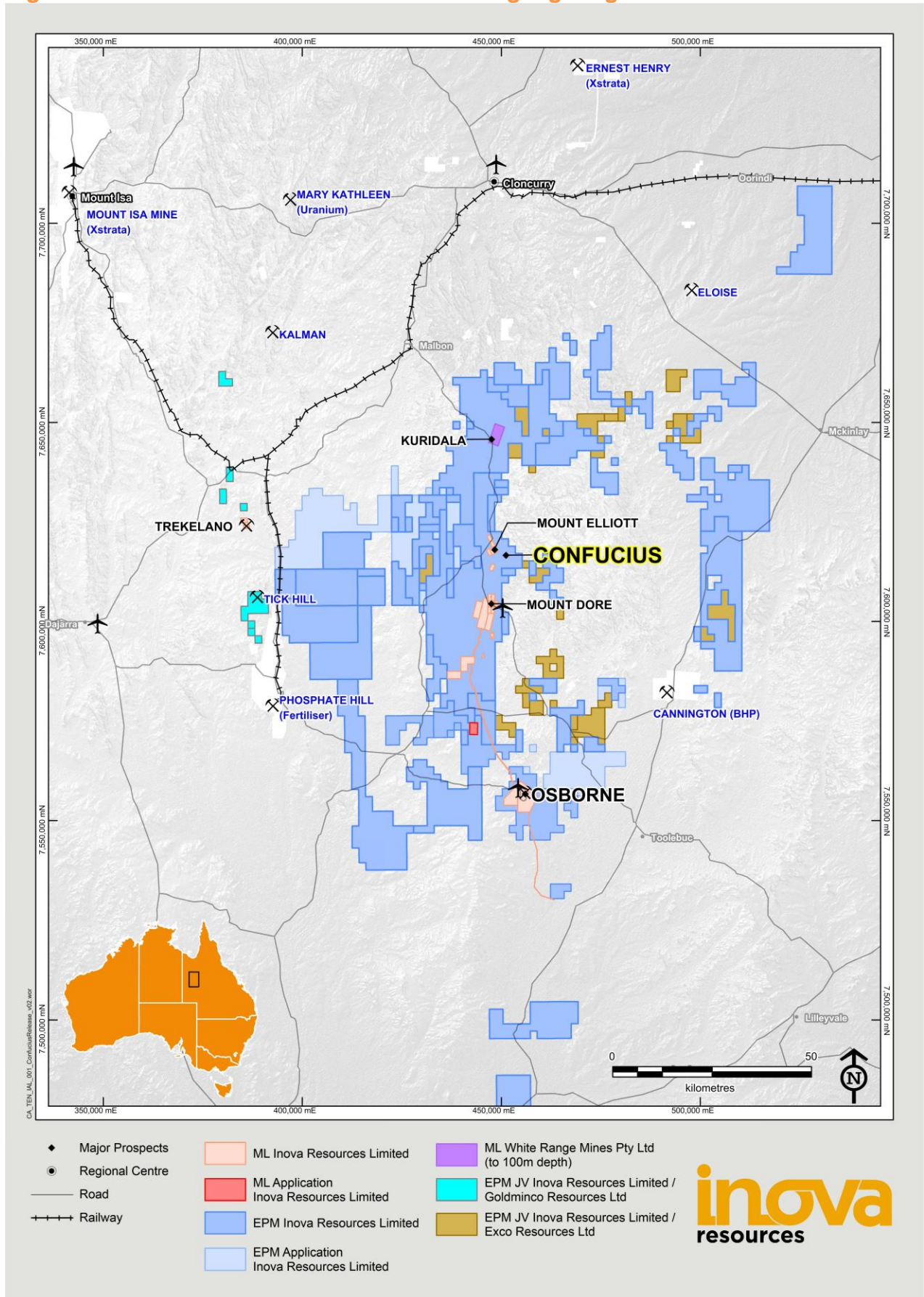
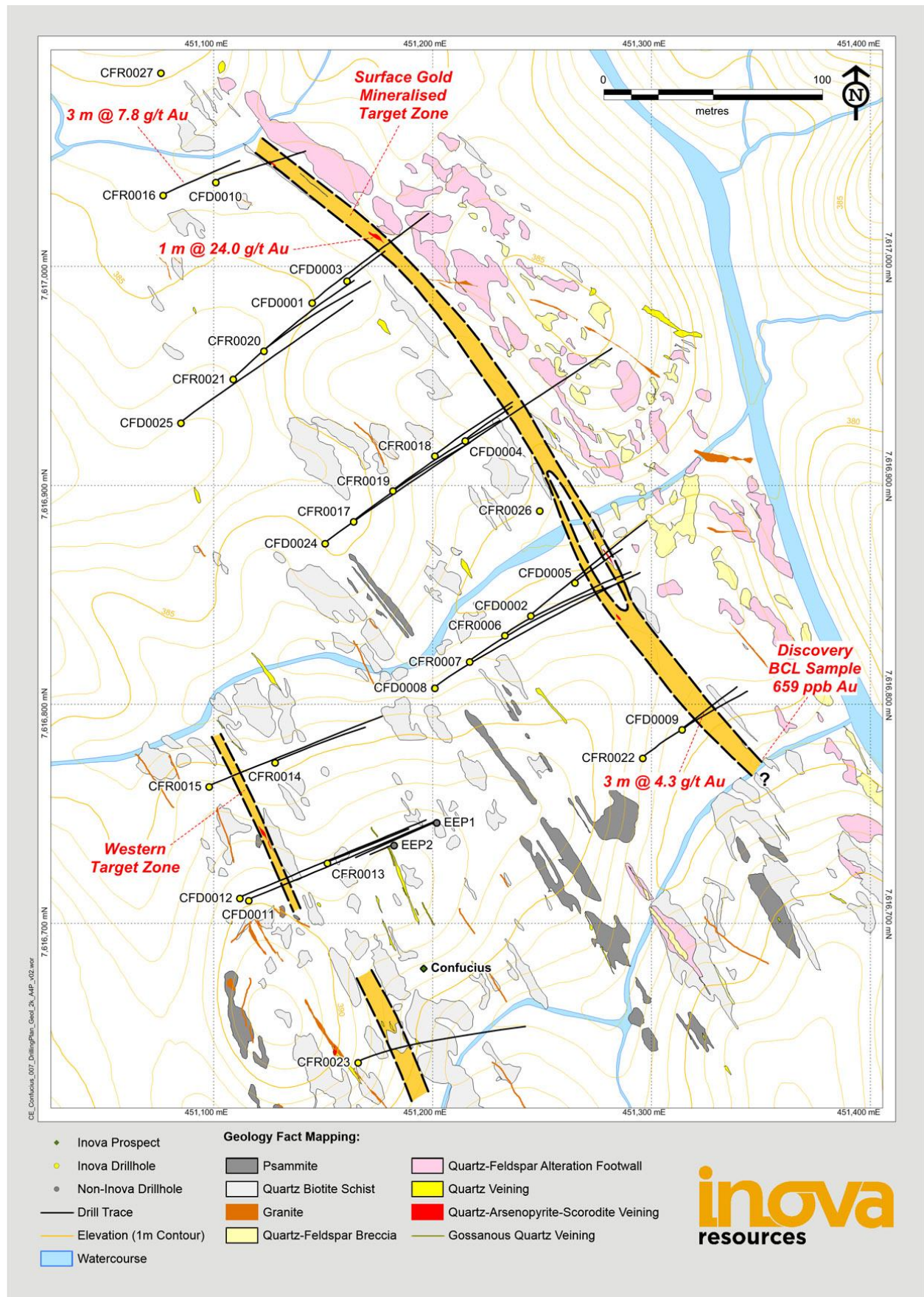
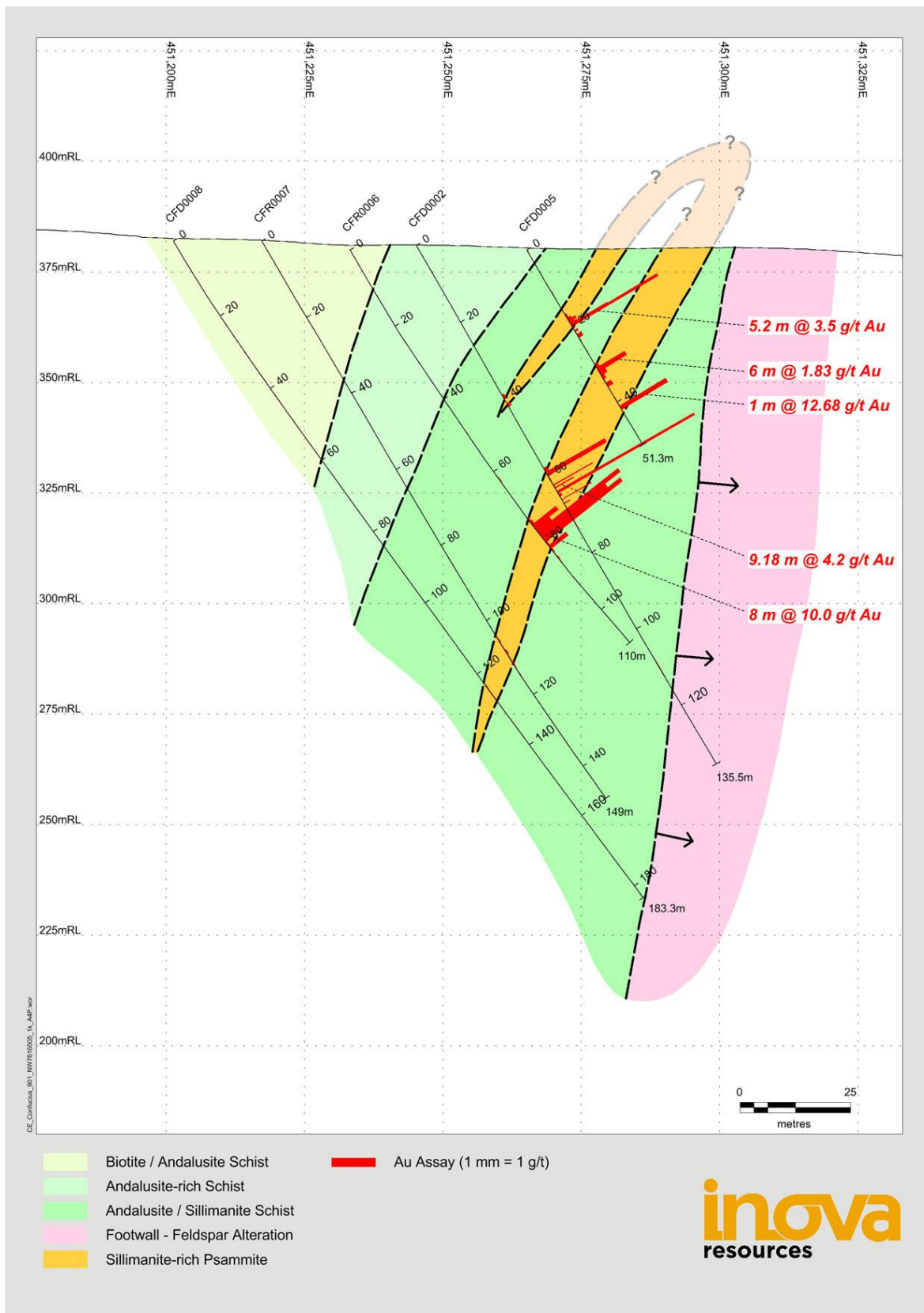


Figure 2: Confucius Drill Hole Locations over Geology



**Figure 3: Confucius Section Showing Geological Interpretation of Gold Mineralisation**



**Table 1: Drill Hole Details and Summary Results**

Confucius			MGA Zone 54 (GDA94)				Dip (°)	EOH (m)	Significant Intercepts >0.5g/t Au
Hole ID	Date	Hole Type	Easting (m)	Northing (m)	RL (m)	Azi (°)			
CFD0001	2012	DDH	451,145	7,616,984	388	53	-60	132.4	<b>0.85m @ 8.3 g/t Au from 43.15m</b>
CFD0002	2012	DDH	451,245	7,616,841	381	50	-60	135.5	<b>9.38m @ 4.2 g/t Au from 58m</b>
CFD0003	2013	DDH	451,161	7,616,994	384	53	-61	43.9	1m @ 0.96 g/t Au from 17m
CFD0004	2013	DDH	451,215	7,616,921	381	53	-60	51.31	No results > 0.5 g/t Au
CFD0005	2013	DDH	451,265	7,616,856	380	53	-60	51.3	<b>24.1m @ 1.76 g/t Au from 17.9m</b>
CFD0008	2013	RC-DDH	451,201	7,616,808	382	53	-60	183.3	No results > 0.5 g/t Au
CFD0009	2013	DDH	451,314	7,616,789	380	53	-60	63.3	<b>3m @ 4.3 g/t Au from 12m</b>
CFD0010	2013	DDH	451,101	7,617,039	383	53	-60	86.1	1m @ 1.1 g/t Au from 57m
CFD0011	2013	DDH	451,116	7,616,711	389	68	-60	179.1	No results > 0.5 g/t Au
CFD0012	2013	DDH	451,112	7,616,712	389.2	68	-70	255.58	No results to date
CFD0024	2013	RC-DDH	451,151	7,616,874	384.6	53	-60	324.4	No results to date
CFD0025	2013	RC-DDH	451,085	7,616,929	387.8	53	-61	186.5	No results to date
CFR0006	2013	RC	451,233	7,616,832	380	53	-60	110	<b>8m @ 10 g/t Au from 74m</b>
CFR0007	2013	RC	451,217	7,616,820	382	54	-60	149	No results > 0.5 g/t Au
CFR0013	2013	RC	451,152	7,616,728	388	68	-60	80	No results > 0.5 g/t Au
CFR0014	2013	RC	451,128	7,616,774	386	68	-60	84	No results to date
CFR0015	2013	RC	451,098	7,616,763	386	68	-60	150	No results > 0.5 g/t Au
CFR0016	2013	RC	451,077	7,617,033	383	66	-62	78	<b>3m @ 7.8 g/t Au from 29m</b>
CFR0017	2013	RC	451,164	7,616,884	385	53	-61	150	No results > 0.5 g/t Au
CFR0018	2013	RC	451,201	7,616,914	382	53	-62	85	1m @ 1 g/t Au from 63m
CFR0019	2013	RC	451,182	7,616,898	383	53	-61	120	No results to date
CFR0020	2013	RC	451,123	7,616,962	385	53	-62	112	No results to date
CFR0021	2013	RC	451,109	7,616,949	387	46	-62	150	No results to date
CFR0022	2013	RC	451,296	7,616,776	382	53	-60	102	No results to date
CFR0023	2013	RC	451,166	7,616,637	385	68	-61	120	No results to date
CFR0026	2013	RC	451,249	7,616,889	381	360	-90	80	No results to date
CFR0027	2013	RC	451,076	7,617,089	385	360	-90	80	No results to date
EEP1	1999	RC	451,202	7,616,746	388	246	-60	81	No results > 0.5 g/t Au
EEP2	1999	RC	451,182	7,616,736	389	246	-60	24	No results > 0.5 g/t Au