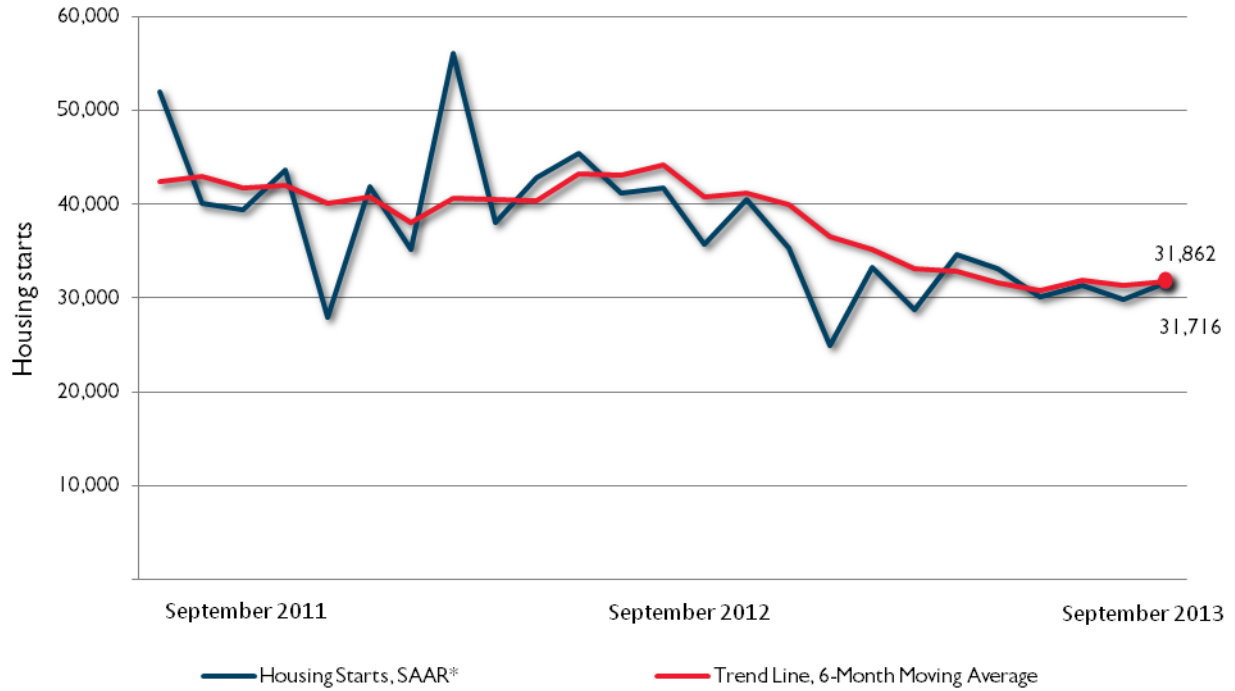


Housing starts in Quebec urban centres



*SAAR: Seasonally Adjusted Annual Rate

Preliminary Housing Starts Data September 2013		
Quebec	August 2013	September 2013
<i>Trend¹, urban centres²</i>	31,383	31,862
<i>SAAR, urban centres²</i>	29,943	31,716
	September 2012	September 2013
Actual, urban centres ²		
September - Single-detached	896	758
September - Multiples	2,766	2,099
September - Total	3,662	2,857
January to September - Single-detached	8,205	6,299
January to September - Multiples	21,861	16,172
January to September - Total	30,066	22,471

Source : CMHC

¹ Census Metropolitan Area

² The trend is a six-month moving average of the monthly seasonally adjusted annual rates (SAAR).
Detailed data available upon request

**Quebec - Preliminary Actual Housing Starts Data by Intended Market
September / 2012-2013**

Urban Centres		Singles		Multiples		Total	
		2012	2013	2012	2013	2012	2013
Urban Centres 100,000+	<i>Montréal CMA</i>	305	227	1,611	1,177	1,916	1,404
	<i>Ottawa-Gatineau CMA (QC)</i>	84	69	83	153	167	222
	<i>Québec CMA</i>	90	108	644	387	734	495
	<i>Saguenay CMA</i>	39	26	36	29	75	55
	<i>Sherbrooke CMA</i>	48	31	79	14	127	45
	<i>Trois-Rivières CMA</i>	27	11	13	16	40	27
	Urban Centres 50,000-99,999	<i>Drummondville CA</i>	27	36	4	9	31
	<i>Grandby CA</i>	16	19	32	18	48	37
	<i>Rimouski CA</i>	12	16			12	16
	<i>Saint-Hyacinthe CA</i>	2	1	24	33	26	34
	<i>Saint-Jean-sur-Richelieu V CA</i>	25	9	46	29	71	38
	<i>Shawinigan CA</i>	5	8		8	5	16
Urban Centres 10,000+	<i>Total Urban Starts</i>	896	758	2,766	2,099	3,662	2,857

Source : CMHC

**Quebec - Preliminary Actual Housing Starts Data by Intended Market
Year-to-Date / 2012-2013**

Urban Centres		Freehold-Single ²		Freehold-Multi ²		Total	
		2012	2013	2012	2013	2012	2013
Urban Centres 100,000+	<i>Montréal CMA</i>	3,025	2,275	12,178	8,794	15,203	11,069
	<i>Ottawa-Gatineau CMA (QC)</i>	545	354	1,565	942	2,110	1,296
	<i>Québec CMA</i>	937	754	3,971	2,650	4,908	3,404
	<i>Saguenay CMA</i>	311	252	413	485	724	737
	<i>Sherbrooke CMA</i>	506	345	776	586	1 282	931
	<i>Trois-Rivières CMA</i>	234	172	514	470	748	642
	Urban Centres 50,000-99,999	<i>Drummondville CA</i>	335	206	140	114	475
	<i>Grandby CA</i>	201	155	337	261	538	416
	<i>Rimouski CA</i>	135	82	108	141	243	223
	<i>Saint-Hyacinthe CA</i>	75	38	189	138	264	176
	<i>Saint-Jean-sur-Richelieu V CA</i>	158	125	162	136	320	261
	<i>Shawinigan CA</i>	77	81	86	26	163	107
Urban Centres 10,000+	<i>Total Urban Starts</i>	8,205	6,299	21,861	16,172	30,066	22,471

Source : CMHC

Quebec Preliminary Actual Housing Starts Data							
Current Quarter / 2012 - 2013							
Urban Centres		Singles		Multiples		Total	
		2012	2013	2012	2013	2012	2013
Urban Centres 10,000-49,999	Alma CA/AR	22	13	24	16	46	29
	Amos CA/AR	4	30	--	--	4	30
	Baie-Comeau CA/AR	4	2	--	--	4	2
	Campbellton CA/AR (QC)	--	--	--	--	--	--
	Cowansville CA/AR	10	12	46	16	56	28
	Dolbeau-Mistassini CA/AR	9	6	5	--	14	6
	Gaspé V	45	20	14	10	59	30
	Hawkesbury CA/AR (QC)	12	--	--	--	12	--
	Joliette CA/AR	41	32	49	31	90	63
	La Tuque V	3	9	--	--	3	9
	Lachute CA/AR	8	7	33	--	41	7
	Les Îles-de-la-Madeleine MÉ	10	--	2	--	12	--
	Marieville V	n/a	1	n/a	6	n/a	7
	Matane CA/AR	16	7	6	4	22	11
	Mont-Laurier V	9	21	8	19	17	40
	Montmagny V	5	2	4	11	9	13
	Prévost V	10	19	15	4	25	23
	Rawdon MÉ	17	9	22	18	39	27
	Rimouski CA/AR	45	n/a	62	n/a	107	n/a
	Rivière-du-Loup CA/AR	35	12	4	12	39	24
	Roberval	7	5	4	2	11	7
	Rouyn-Noranda CA/AR	42	63	30	30	72	93
	Saint-Félicien V	3	10	4	18	7	28
	Saint-Georges CA/AR	27	20	19	11	46	31
	Saint-Lin-Laurentides V	44	27	29	34	73	61
	Sainte-Adèle V	23	15	4	1	27	16
	Sainte-Agathe-des-Monts V	n/a	18	n/a	--	n/a	18
	Sainte-Marie V	15	7	22	20	37	27
	Sainte-Sophie MÉ	34	59	44	10	78	69
	Salaberry-de-Valleyfield CA/AR	21	19	31	26	52	45
	Sept-Îles CA/AR	71	17	64	2	135	19
	Sorel-Tracy CA/AR	26	28	39	90	65	118
	Thetford Mines CA/AR	12	12	--	24	12	36
	Val d'Or CA/AR	61	38	2	48	63	86
	Victoriaville CA/AR	41	52	51	60	92	112
	Urban Centres 10,000-49,999	732	592	637	523	1,369	1,115

Source : CMHC

Quebec Preliminary Actual Housing Starts Data							
Year to Date / 2012 - 2013							
Urban Centres		Singles		Multiples		Total	
		2012	2013	2012	2013	2012	2013
Urban Centres 10,000-49,999	Alma CA/AR	61	40	88	58	149	98
	Amos CA/AR	26	47	3	20	29	67
	Baie-Comeau CA/AR	7	4	6	--	13	4
	Campbellton CA/AR (QC)	--	--	--	--	--	--
	Cowansville CA/AR	48	30	76	49	124	79
	Dolbeau-Mistassini CA/AR	22	16	5	4	27	20
	Gaspé V	45	40	14	21	59	61
	Hawkesbury CA/AR (QC)	14	3	--	2	14	5
	Joliette CA/AR	145	92	148	140	293	232
	La Tuque V	3	9	--	--	3	9
	Lachute CA/AR	22	18	54	32	76	50
	Les Îles-de-la-Madeleine MÉ	10	--	2	--	12	--
	Marieville V	n/a	13	n/a	15	n/a	28
	Matane CA/AR	28	22	8	4	36	26
	Mont-Laurier V	30	44	8	23	38	67
	Montmagny V	21	8	70	15	91	23
	Prévost V	83	38	15	17	98	55
	Rawdon MÉ	44	31	42	22	86	53
	Rimouski CA/AR	135	n/a	108	n/a	243	n/a
	Rivière-du-Loup CA/AR	61	39	4	40	65	79
	Roberval	15	13	4	12	19	25
	Rouyn-Noranda CA/AR	111	149	32	72	143	221
	Saint-Félicien V	6	18	4	20	10	38
	Saint-Georges CA/AR	77	64	61	75	138	139
	Saint-Lin-Laurentides V	129	97	104	127	233	224
	Sainte-Adèle V	43	36	12	61	55	97
	Sainte-Agathe-des-Monts V	n/a	31	n/a	29	n/a	60
	Sainte-Marie V	35	27	95	56	130	83
	Sainte-Sophie MÉ	118	126	78	27	196	153
	Salaberry-de-Valleyfield CA/AR	54	42	90	58	144	100
	Sept-Îles CA/AR	89	45	66	14	155	59
	Sorel-Tracy CA/AR	114	86	166	157	280	243
	Thetford Mines CA/AR	31	30	40	34	71	64
	Val d'Or CA/AR	96	85	11	62	107	147
	Victoriaville CA/AR	76	117	118	163	194	280
	Urban Centres 10,000-49,999	1,799	1,460	1,532	1,429	3,331	2,889

Source : CMHC