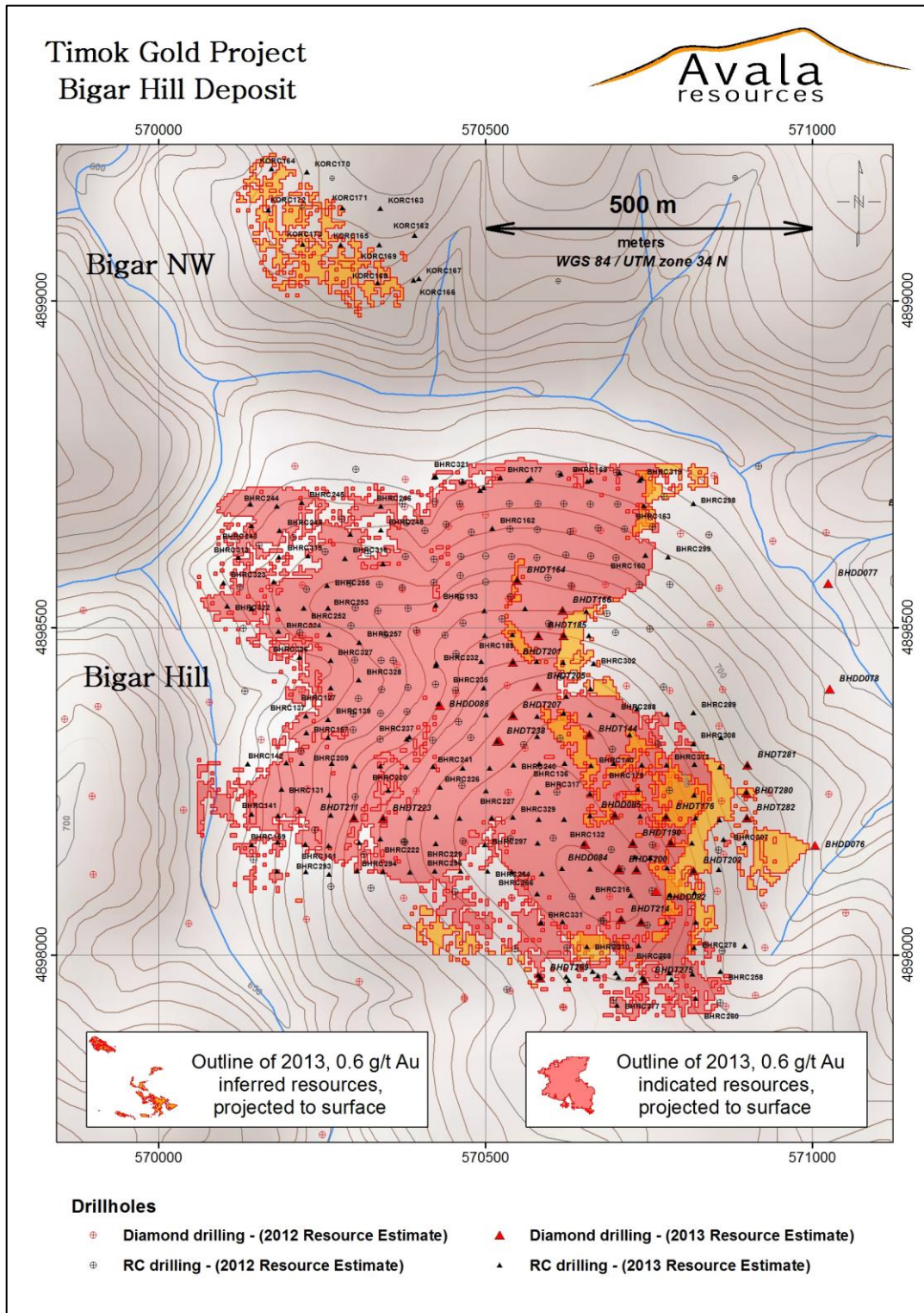
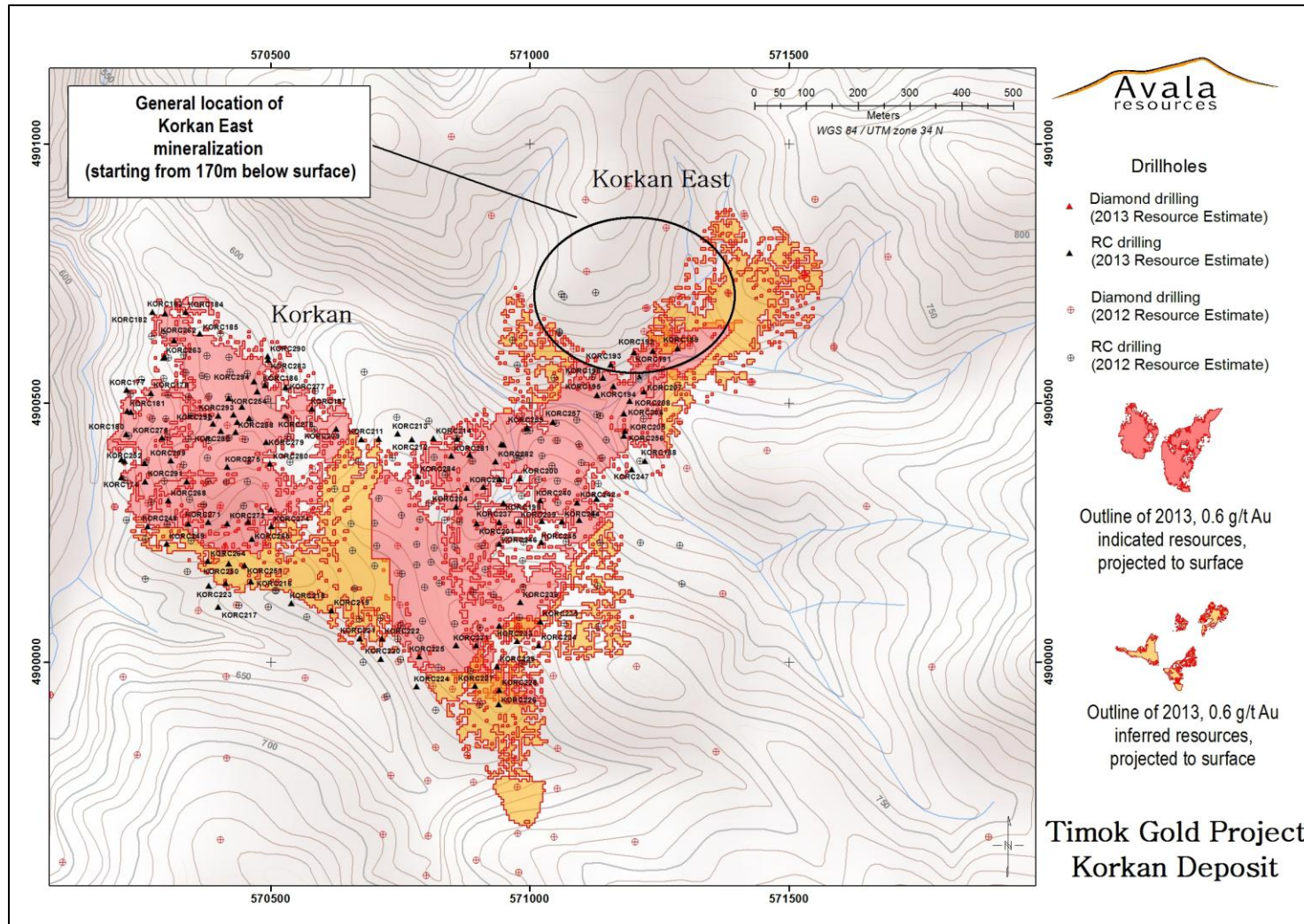


**Figure 1:** Location of the Korkan-Bigar and Kraku Pester area within the greater sediment-hosted gold belt, as defined in this image by mapped 'target stratigraphy' (yellow) and anomalous gold soil geochemistry within the Timok Gold Project. The total metal contour plots for Korkan, Bigar Hill and Kraku Pester have been superimposed on the sediment-hosted gold belt, as defined to date by drilling.



**Figure 2:** Bigar Hill infill drilling summary plan and a plan projection of categorized Local MIK resource blocks greater than 0.6g/t Au.





**Figure 3:** Korkan infill drilling summary plan and a plan projection of categorized Local MIK resource blocks greater than 0.6g/t Au along with the location of excised blocks from the Korkan East sector.

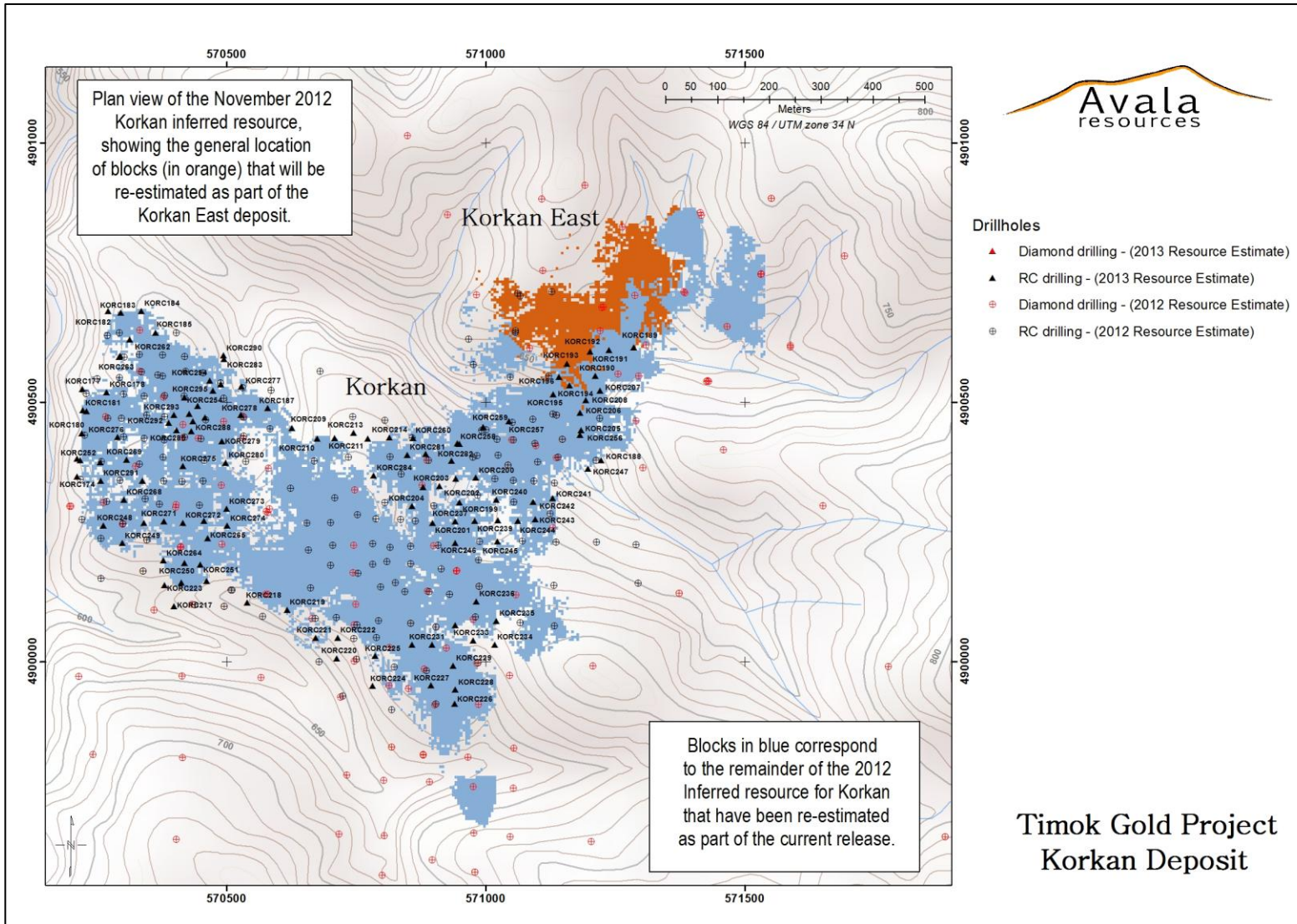


Figure 4: Location of excised blocks from the Korkan East sector.



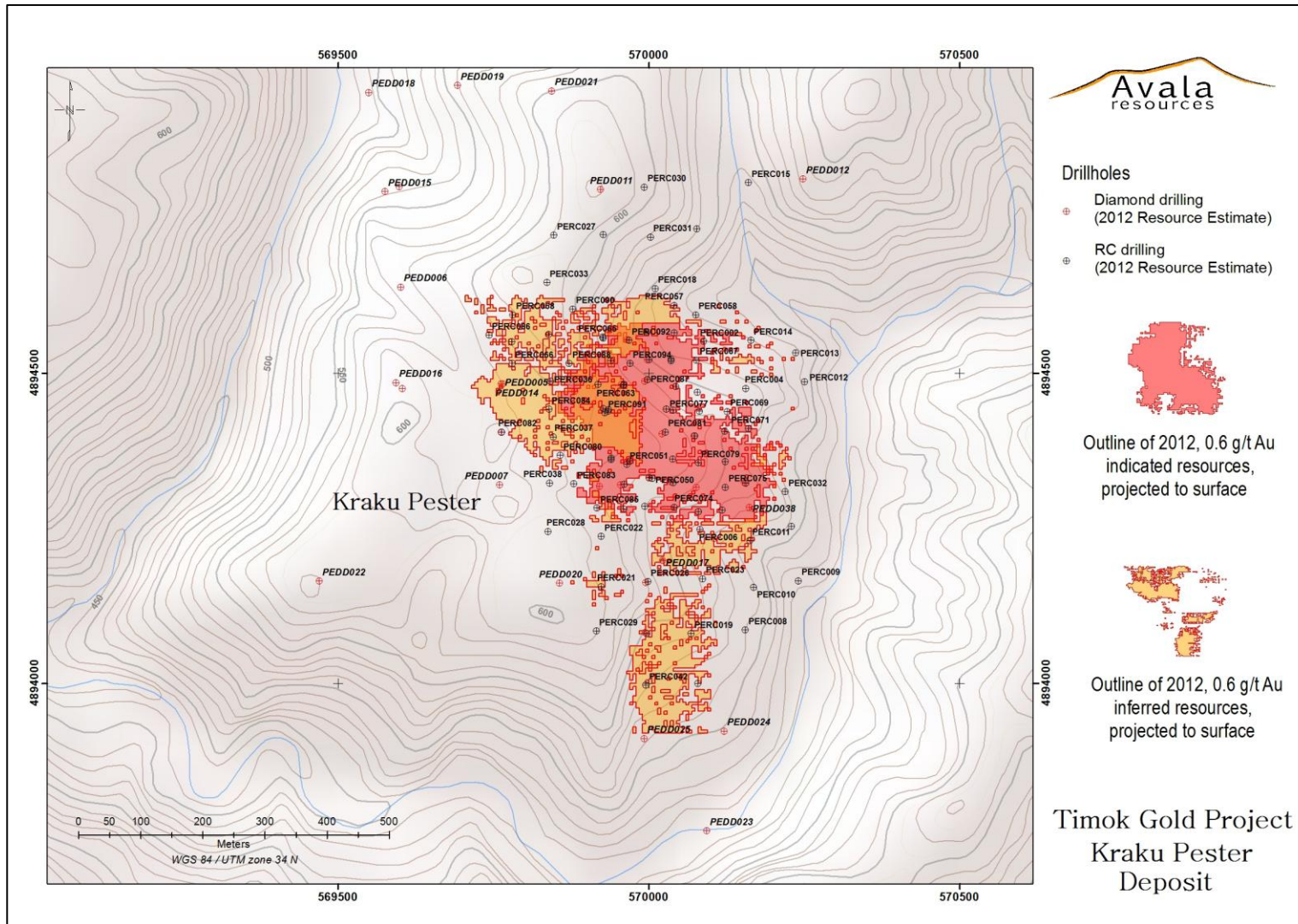


Figure 5: Kraku Pester infill drilling summary plan and a plan projection of categorized Local MIK resource blocks greater than 0.6g/t Au.