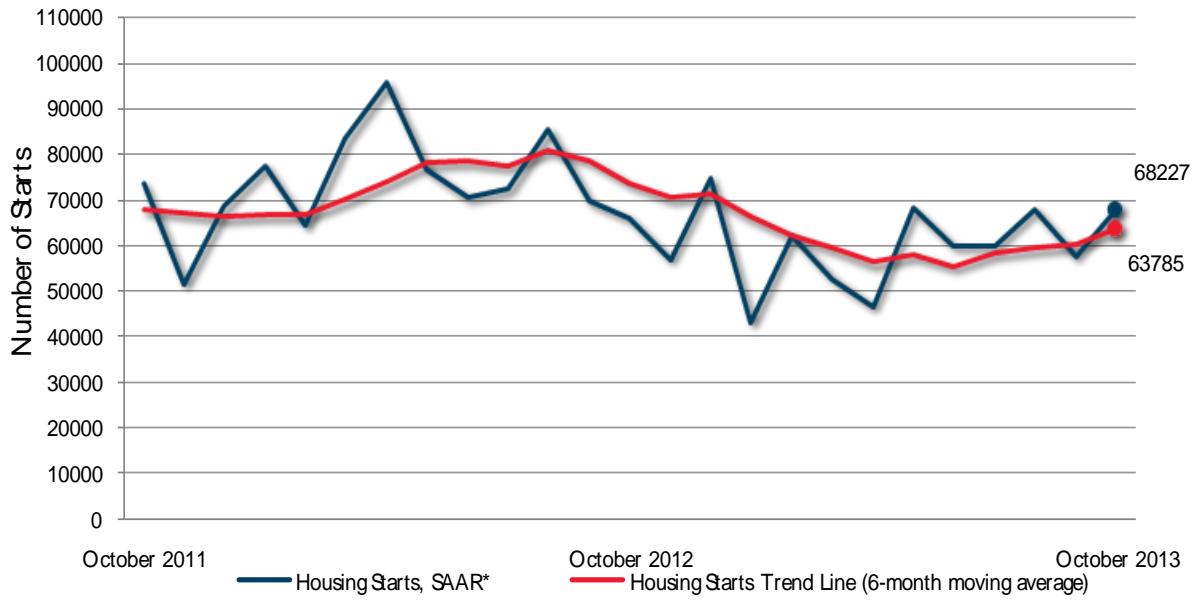


## Provincial Housing Starts - Urban Areas



**Preliminary Housing Start Data  
October 2013**

<b>Province</b>	<b>September 2013</b>	<b>October 2013</b>
<i>Trend</i> <sup>1</sup> , urban centres <sup>2</sup>	60,207	63,785
SAAR, urban centres <sup>2</sup>	57,811	68,227
	<b>2012</b>	<b>2013</b>
Actual, urban centres <sup>2</sup>		
October- Single-Detached	2167	1901
October - Multiples	3584	4008
October- Total	5751	5909
January to October- Single-Detached	19,582	17,541
January to October - Multiples	43,267	31,165
January to October - Total	62,849	48,706

Source: CMHC

<sup>1</sup>The trend is a six-month moving average of the monthly seasonally adjusted annual rates (SAAR).

<sup>2</sup>Urban centres with a population of 10,000 and over.

Detailed data available upon request