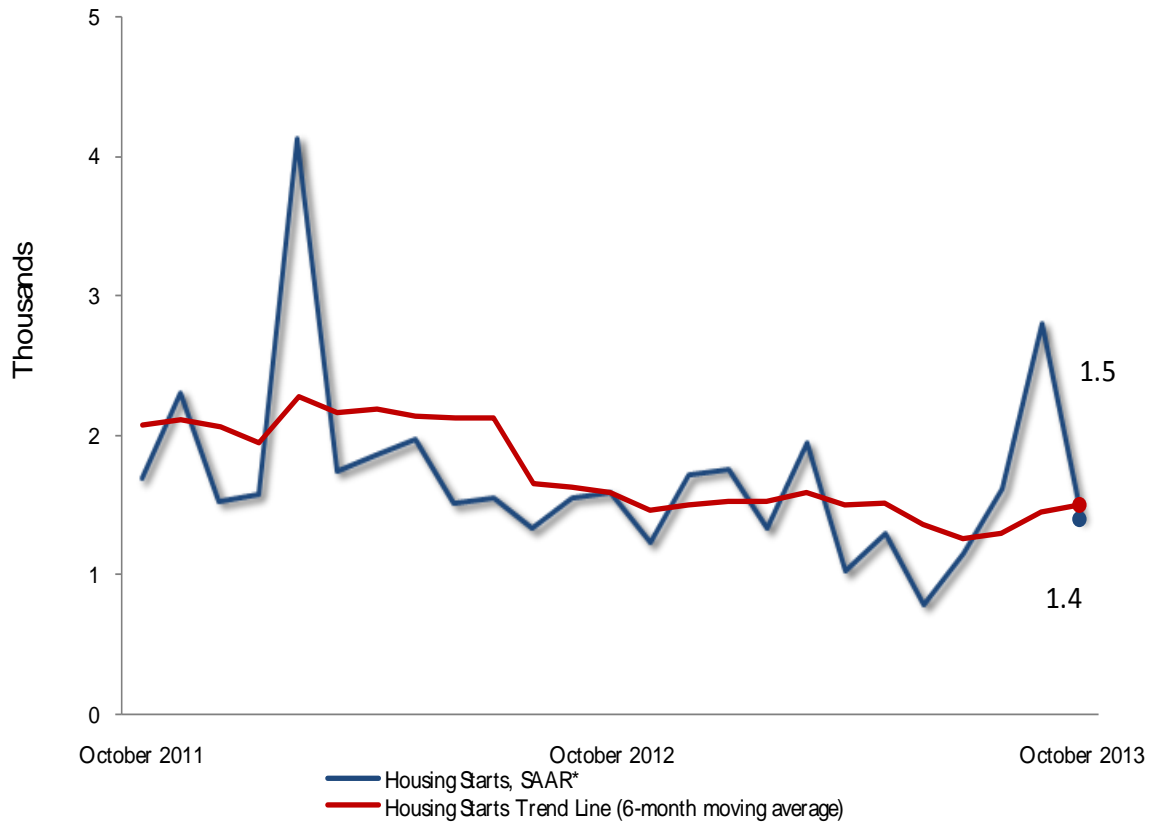


Oshawa CMA Housing Starts



**Preliminary Housing Start Data
October 2013**

Oshawa CMA¹	September 2013	October 2013
<i>Trend²</i>	1,442	1,507
SAAR	2,799	1,410
	October 2012	October 2013
Actual		
October - Single-detached	98	85
October - Multiples	36	33
October - Total	134	118
January to October - Single-detached	971	753
January to October - Multiples	580	455
January to October - Total	1,551	1,208

Source: CMHC

¹Census Metropolitan Area

²The trend is a six-month moving average of the monthly seasonally adjusted annual rates (SAAR).

Detailed data available upon request

**Preliminary Actual Housing Start Data by Type
October/ 2012-2013**

	Single		Semi		Row		Apt		Total	
	2012	2013	2012	2013	2012	2013	2012	2013	2012	2013
	List of Zones									
Whitby	49	23	0	0	8	18	0	0	57	41
Oshawa City	8	48	16	0	6	0	0	15	30	63
Clarington	41	14	0	0	6	0	0	0	47	14
Total Oshawa CMA	98	85	16	0	20	18	0	15	134	118
Pickering	5	18	0	0	5	6	0	0	10	24
Ajax	18	17	0	0	14	0	0	0	32	17
Uxbridge	2	5	0	0	0	0	0	0	2	5
Brock	0	0	0	0	0	0	0	0	0	0
Scugog	3	4	0	0	0	0	0	0	3	4

**Preliminary Actual Housing Start Data by Type
Year to Date / 2012-2013**

	Single		Semi		Row		Apt		Total	
	2012	2013	2012	2013	2012	2013	2012	2013	2012	2013
	List of Zones									
Whitby	239	171	0	0	133	39	211	2	583	212
Oshawa City	222	368	26	28	57	24	0	249	305	669
Clarington	510	214	6	30	65	83	82	0	663	327
Total Oshawa CMA	971	753	32	58	255	146	293	251	1551	1208
Pickering	241	78	0	22	46	176	0	0	287	276
Ajax	284	271	42	12	184	91	0	0	510	374
Uxbridge	40	36	0	0	0	0	0	0	40	36
Brock	8	15	0	0	0	0	0	0	8	15
Scugog	15	24	0	0	0	0	0	0	15	24