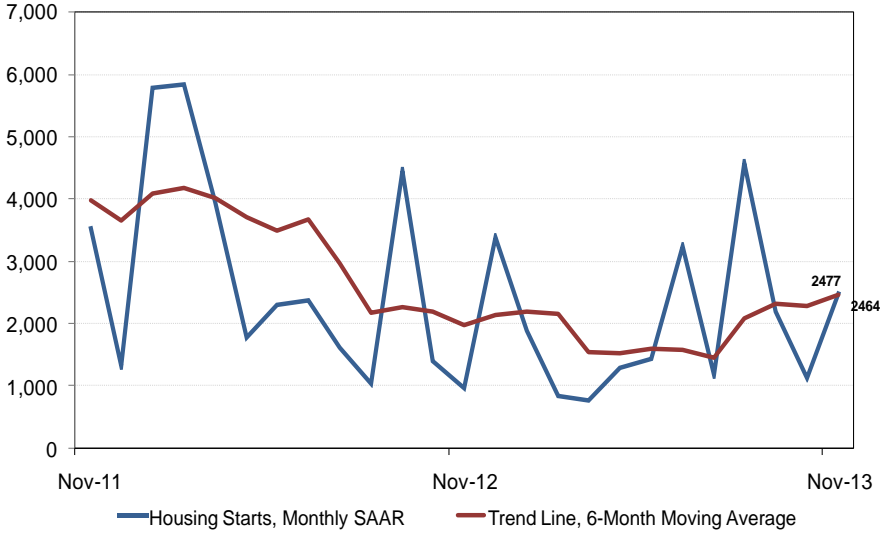


KCW CMA Housing Starts



Preliminary Housing Start Data November 2013		
Kitchener-Cambridge-Waterloo, CMA¹	October 2013	November 2013
<i>Trend²</i>	2290	2464
<i>SAAR³</i>	1129	2477
Actual	November 2012	November 2013
November - Single-Detached	41	52
November - Multiples	30	139
November - Total	71	191
January to November - Single-Detached	819	644
January to November - Multiples	1803	1106
January to November - Total	2622	1750

Source: CMHC

¹ Census Metropolitan Area

² The trend is a six-month moving average of the monthly seasonally adjusted annual rates (SAAR).

³ Seasonally Adjusted at Annual Rates

Detailed data available upon request.

Kitchener-Cambridge-Waterloo Preliminary Actual Housing Start Data by Type November 2013										
Kitchener-Cambridge-Waterloo, CMA ¹	Single		Semi		Row		Apt		Total	
	2012	2013	2012	2013	2012	2013	2012	2013	2012	2013
List of Sub-markets										
Kitchener City	17	23	2	2	3	11	0	40	22	76
Cambridge City	8	9	0	0	13	3	0	0	21	12
North Dumfries TP	5	6	2	0	0	0	0	0	7	6
Waterloo City	5	13	2	2	8	15	0	66	15	96
Woolwich TP	6	1	0	0	0	0	0	0	6	1
Total Kitchener-Cambridge-Waterloo Starts	41	52	6	4	24	29	0	106	71	191
Kitchener-Cambridge-Waterloo Preliminary Actual Housing Start Data by Type Year to Date / 2012-2013										
Kitchener-Cambridge-Waterloo, CMA ¹	Single		Semi		Row		Apt		Total	
	2012	2013	2012	2013	2012	2013	2012	2013	2012	2013
List of Sub-markets										
Kitchener City	412	267	10	22	202	209	402	314	1026	812
Cambridge City	154	138	0	0	115	21	3	135	272	294
North Dumfries TP	43	32	24	2	25	0	0	0	92	34
Waterloo City	92	153	4	2	45	61	971	338	1112	554
Woolwich TP	118	54	0	2	0	0	2	0	120	56
Total Kitchener-Cambridge-Waterloo Starts	819	644	38	28	387	291	1378	787	2622	1750

¹Census Metropolitan Area