

Figure 1: Location of the Cascabel concession in Northern Ecuador. Access is via a 3 hour drive on a paved road from the capital city Quito. The elevation ranges from 750 m to 210 m above sea level.

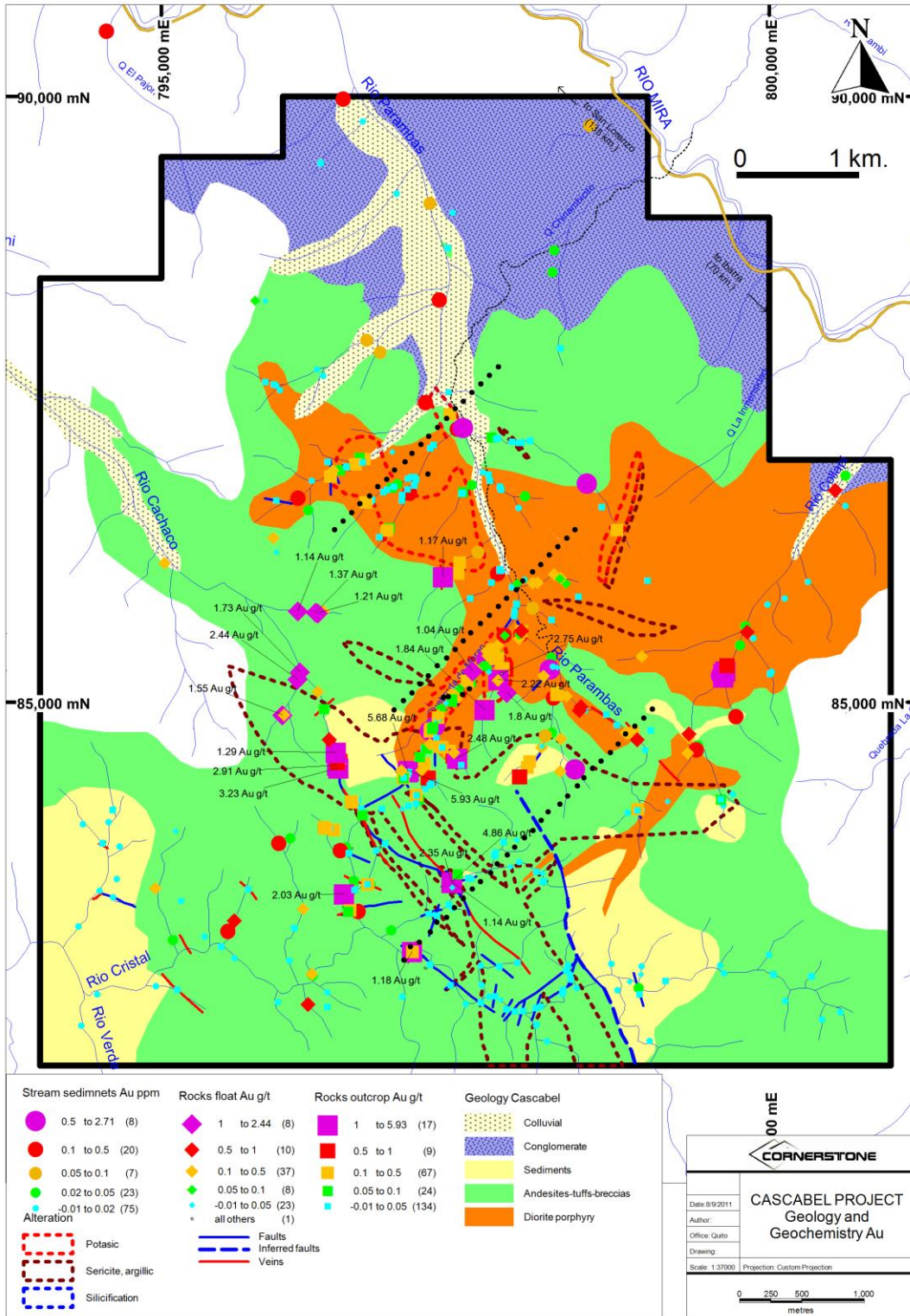


Figure 2: Gold in representative rock chip and stream sediment samples. The black dots mark the soil sampling orientation survey which has been completed and forms the basis for an ongoing 200 m x 100 m systematic soil sampling program.



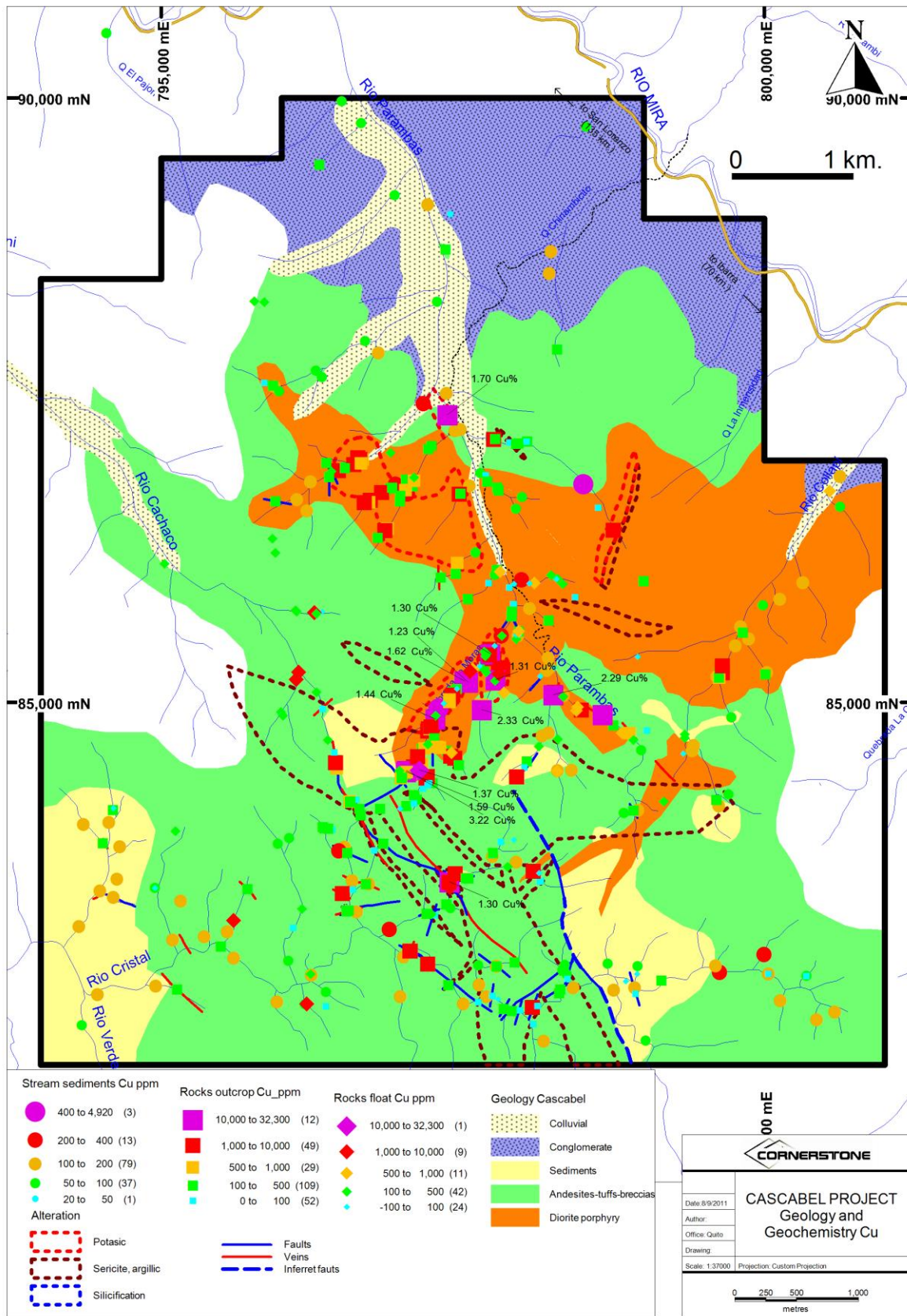


Figure 3: Copper in representative rock chip and stream sediment sampling.



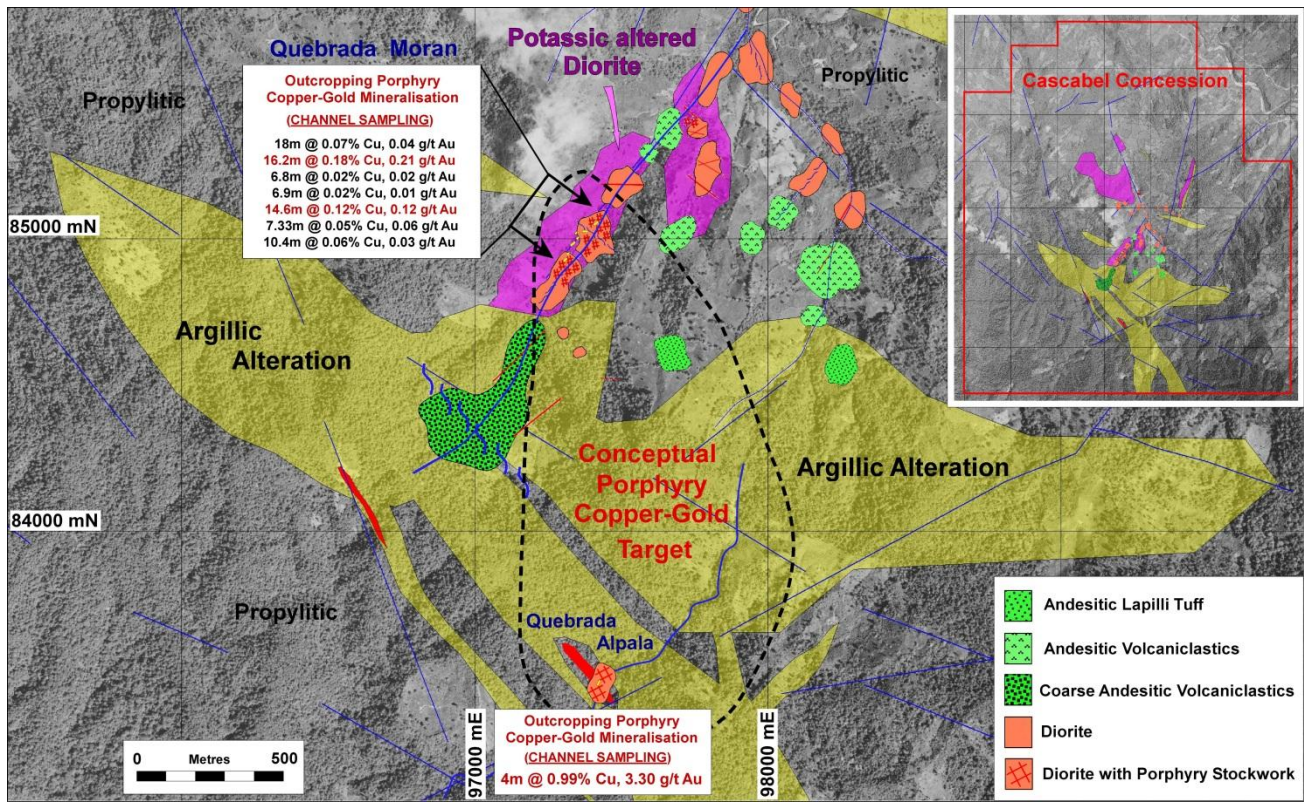


Figure 4: The Quebrada Moran and Quebrada Alpala areas defining the 2 km x 1 km porphyry gold-copper target. Also shown are the channel sampling assay results completed to date at both areas.

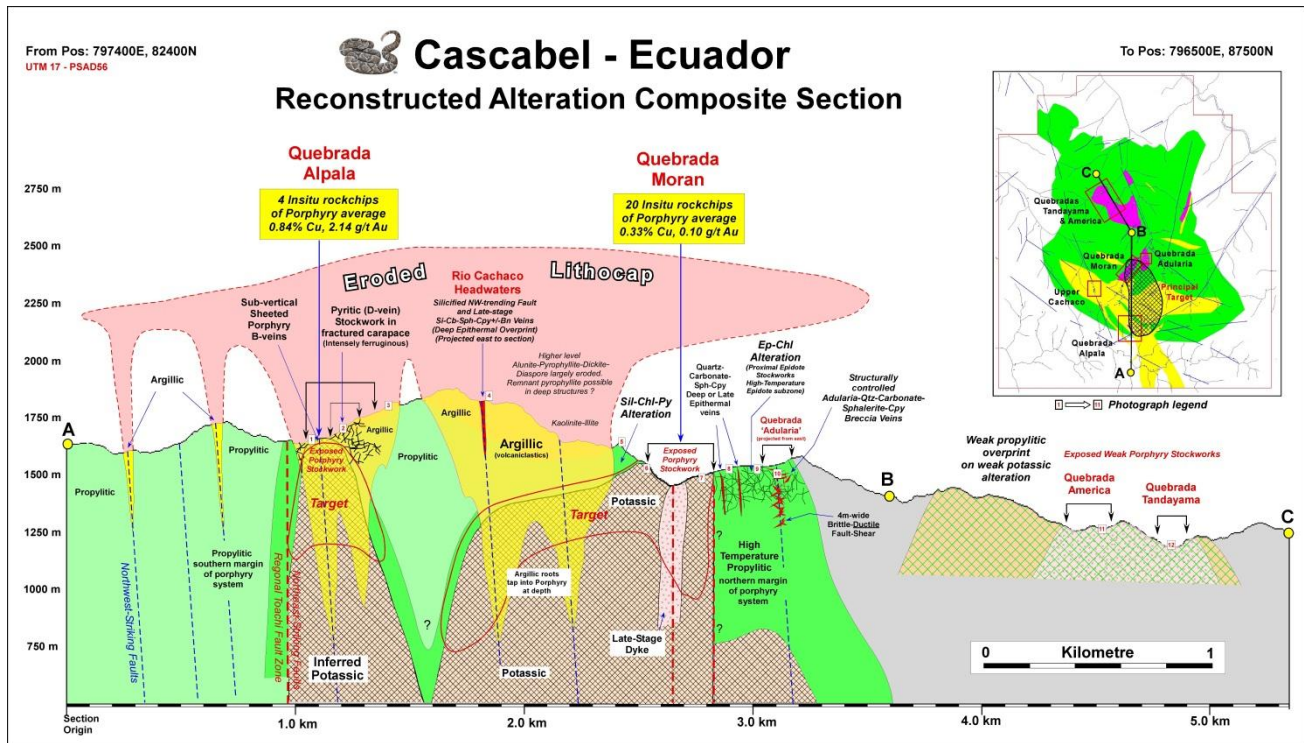


Figure 5: A composite interpretation section through the project area based on geological mapping to date. Ongoing exploration will test this interpretation, which may evolve prior to drill targeting.