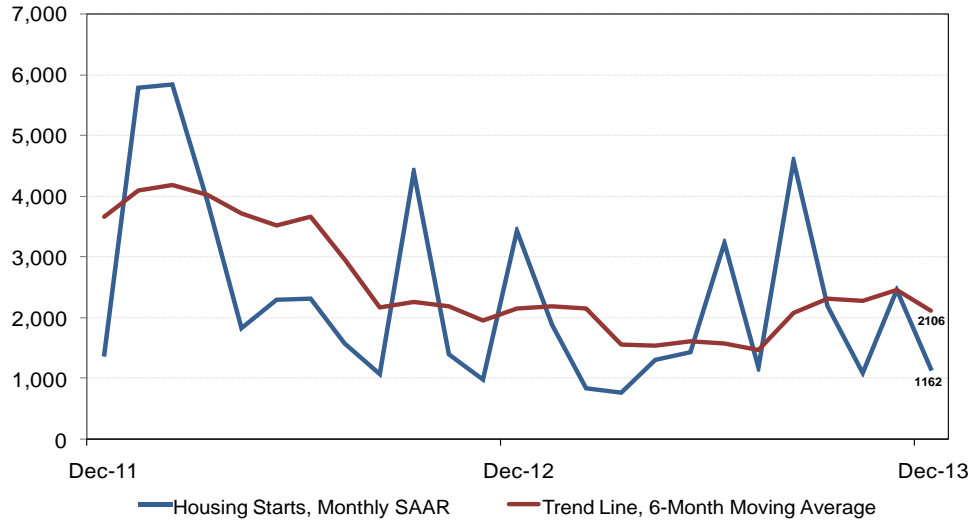


KCWCMA Housing Starts



Preliminary Housing Start Data December 2013		
Kitchener-Cambridge-Waterloo, CMA¹	November 2013	December 2013
<i>Trend²</i>	2451	2106
<i>SAAR³</i>	2460	1162
Actual	December 2012	December 2013
December - Single-Detached	52	46
December - Multiples	226	44
December - Total	278	90
January to December - Single-Detached	871	690
January to December - Multiples	2029	1150
January to December - Total	2900	1840

Source: CMHC

¹ Census Metropolitan Area

² The trend is a six-month moving average of the monthly seasonally adjusted annual rates (SAAR).

³ Seasonally Adjusted at Annual Rates

Detailed data available upon request.

Kitchener-Cambridge-Waterloo Preliminary Actual Housing Start Data by Type December 2013										
Kitchener-Cambridge-Waterloo, CMA ¹	Single		Semi		Row		Apt		Total	
	2012	2013	2012	2013	2012	2013	2012	2013	2012	2013
List of Sub-markets										
Kitchener City	25	25	2	0	40	9	170	20	237	54
Cambridge City	5	9	0	0	0	11	8	0	13	20
North Dumfries TP	1	2	2	0	0	0	0	0	3	2
Waterloo City	13	9	0	0	4	4	0	0	17	13
Woolwich TP	8	1	0	0	0	0	0	0	8	1
Total Kitchener-Cambridge-Waterloo Starts	52	46	4	0	44	24	178	20	278	90
Kitchener-Cambridge-Waterloo Preliminary Actual Housing Start Data by Type Year to Date / 2012-2013										
Kitchener-Cambridge-Waterloo, CMA ¹	Single		Semi		Row		Apt		Total	
	2012	2013	2012	2013	2012	2013	2012	2013	2012	2013
List of Sub-markets										
Kitchener City	437	292	12	22	242	218	572	334	1263	866
Cambridge City	159	147	0	0	115	32	11	135	285	314
North Dumfries TP	44	34	26	2	25	0	0	0	95	36
Waterloo City	105	162	4	2	49	65	971	338	1129	567
Woolwich TP	126	55	0	2	0	0	2	0	128	57
Total Kitchener-Cambridge-Waterloo Starts	871	690	42	28	431	315	1556	807	2900	1840

¹Census Metropolitan Area