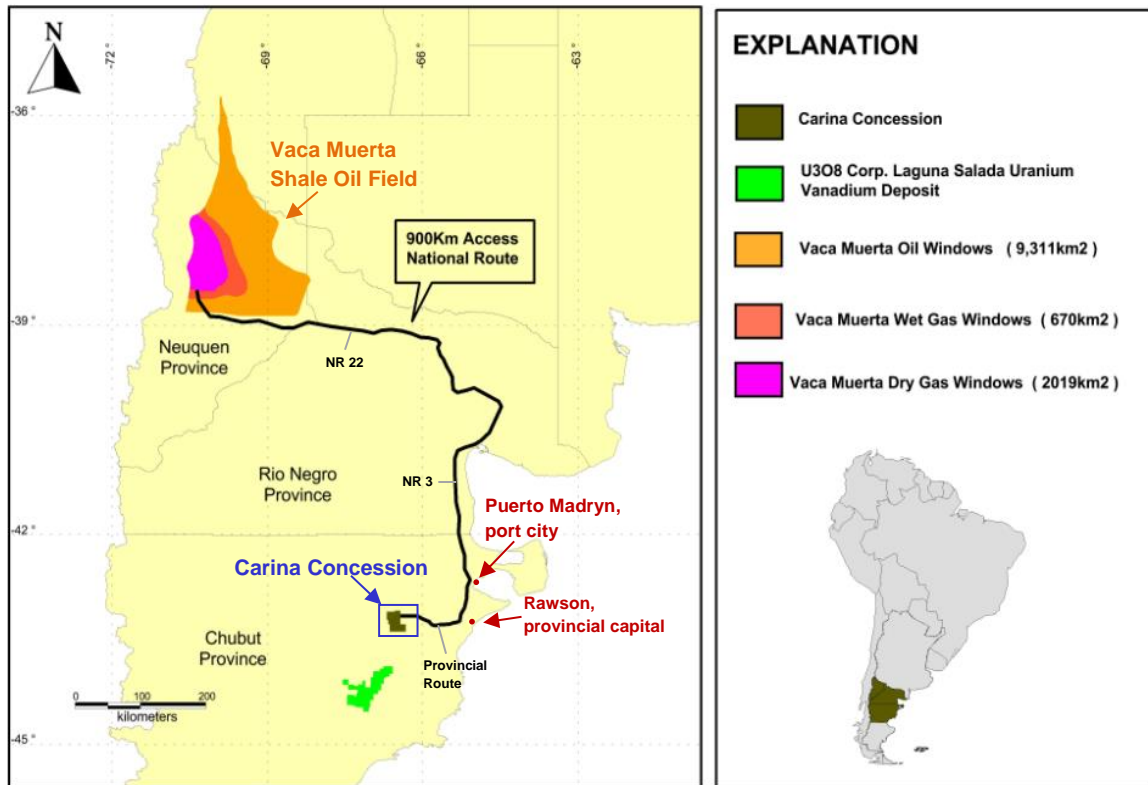


Figure 1 – Location of the Carina Concession Relative to the Vaca Muerta Shale and the Deep Water Port of Puerto Madryn in Argentina



The Carina concession (marked by a blue box) in Chubut Province on which quartz sand that contains the silica beads is exposed at surface over an area of approximately 500Ha. A joint venture agreement has been reached with an Argentine operator on a 100Ha area of Carina. The Carina property is located approximately 900km by road on National Routes 3 and 22 from the Vaca Muerta shale oil field in Neuquen Province.