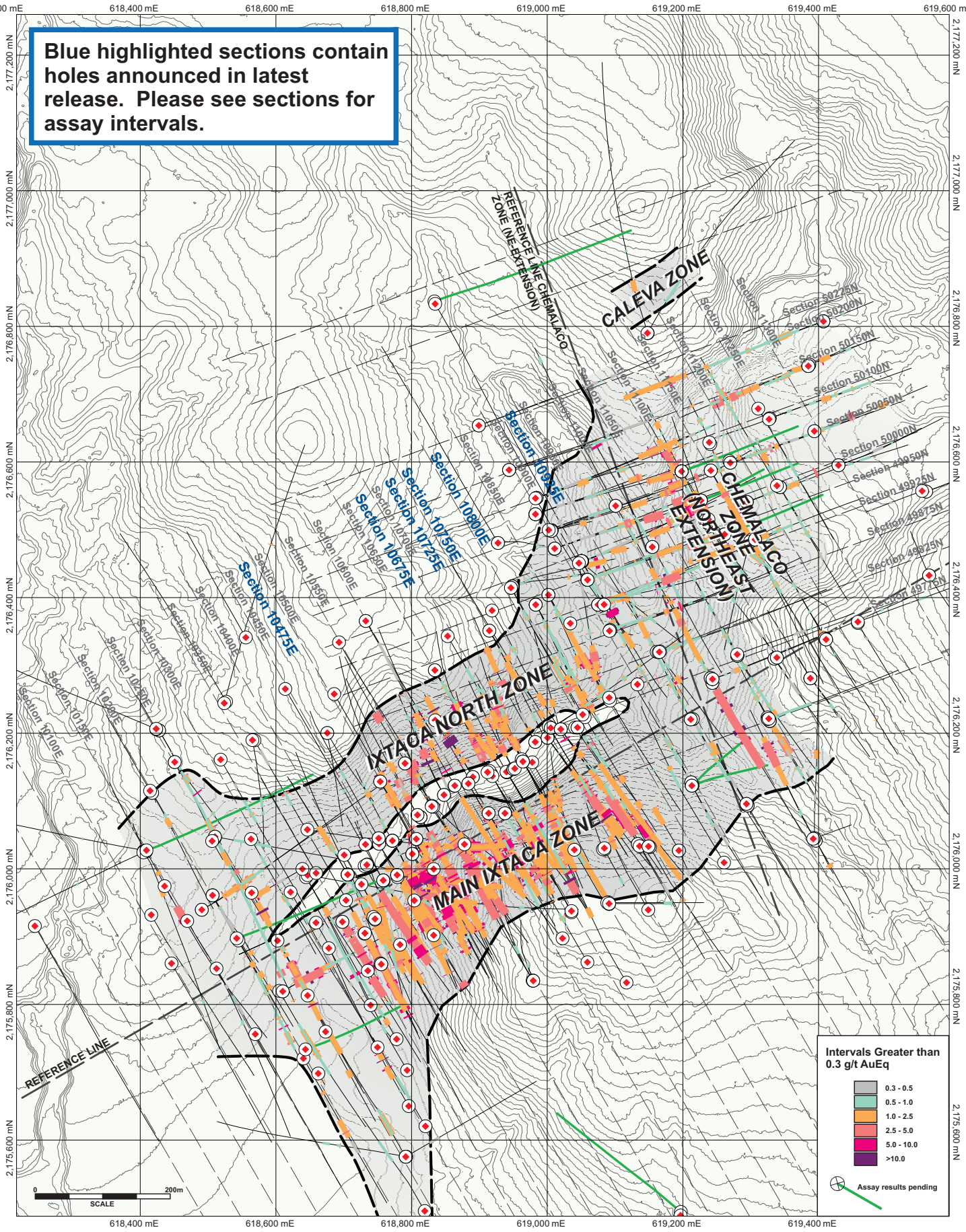


Blue highlighted sections contain holes announced in latest release. Please see sections for assay intervals.



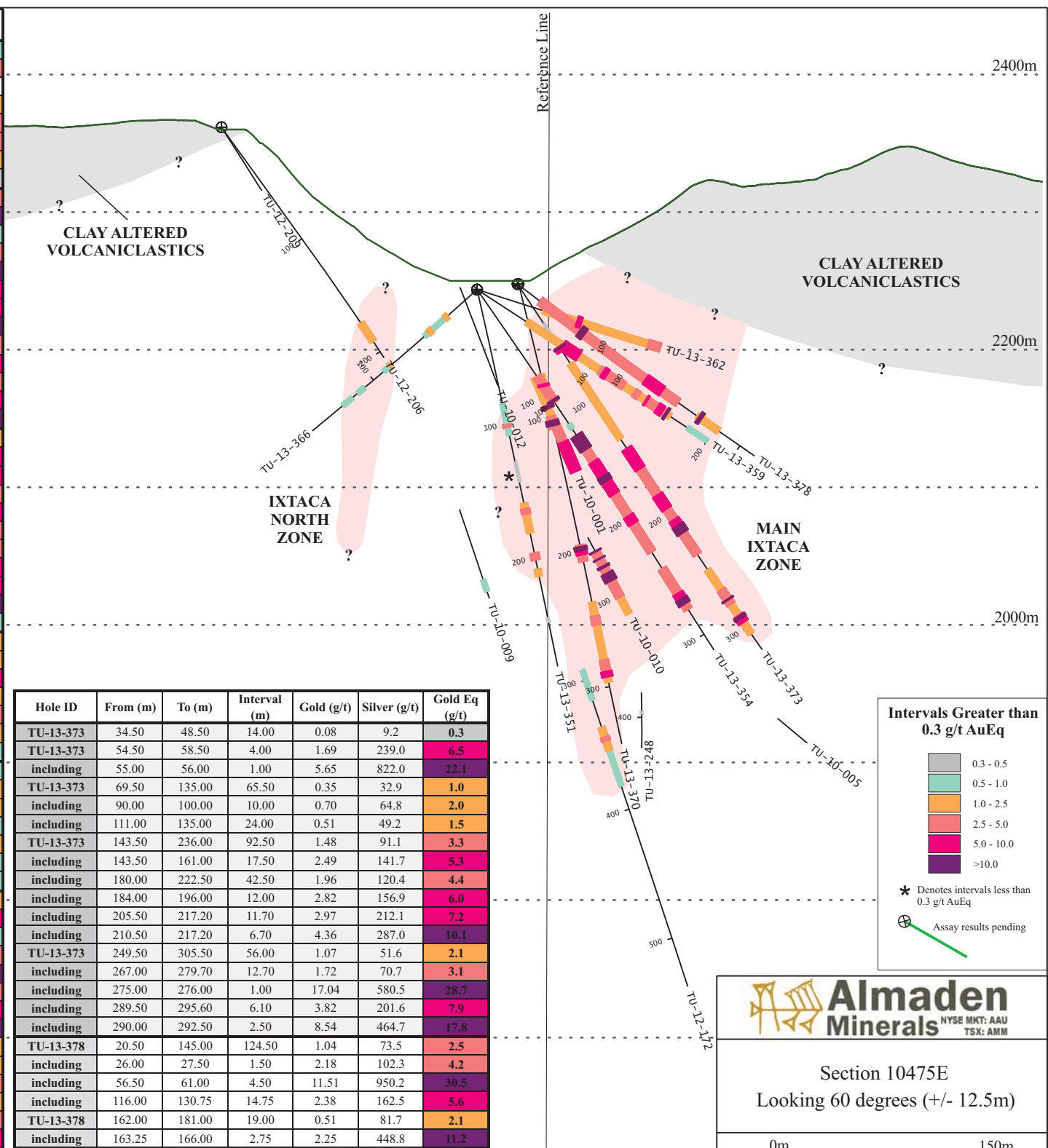
Intervals Greater than 0.3 g/t AuEq

Light Gray	0.3 - 0.5
Light Green	0.5 - 1.0
Orange	1.0 - 2.5
Red	2.5 - 5.0
Pink	5.0 - 10.0
Dark Purple	>10.0

Assay results pending



Hole ID	From (m)	To (m)	Interval (m)	Gold (g/t)	Silver (g/t)	Gold Eq (g/t)
TU-13-351	85.00	108.50	23.50	0.13	40.7	0.9
including	100.50	102.50	2.00	0.37	125.1	2.9
TU-13-351	128.00	143.00	15.00	0.05	5.6	0.2
TU-13-351	159.00	181.00	22.00	0.36	35.5	1.1
including	163.00	167.00	4.00	1.29	116.8	3.6
TU-13-351	196.00	201.00	5.00	0.91	93.2	2.8
TU-13-351	208.00	213.00	5.00	0.81	60.6	2.0
TU-13-351	244.00	247.40	3.40	0.20	8.4	0.4
TU-13-354	77.00	99.50	22.50	0.86	94.0	2.7
including	97.00	99.00	2.00	7.03	779.8	22.6
TU-13-354	118.50	122.60	4.10	0.26	31.4	0.9
TU-13-354	128.10	229.10	101.00	1.92	113.2	4.2
including	128.10	140.70	12.60	4.32	346.3	11.2
including	151.00	179.00	28.00	3.10	145.6	6.0
including	151.00	159.70	8.70	3.95	208.9	8.1
including	163.50	168.00	4.50	8.43	360.1	15.6
including	193.70	220.35	26.65	1.58	91.2	3.4
including	197.90	204.50	6.60	3.70	169.4	7.1
TU-13-354	243.40	278.50	35.10	0.62	108.0	2.8
including	264.75	274.00	9.25	1.62	321.6	8.0
including	269.30	274.00	4.70	2.76	561.3	14.0
TU-13-359	43.00	168.00	125.00	0.73	75.9	2.3
including	74.40	88.40	14.00	2.38	203.7	6.4
including	75.00	84.00	9.00	3.40	288.9	9.2
including	106.75	127.75	21.00	0.88	81.7	2.5
including	109.50	113.00	3.50	1.63	167.3	5.0
including	136.55	140.70	4.15	1.25	113.9	3.5
including	146.60	165.40	18.80	0.98	125.2	3.5
including	146.60	147.80	1.20	1.66	165.5	5.0
including	156.80	161.40	4.60	1.49	197.4	5.4
including	163.70	165.40	1.70	2.89	528.3	13.5
TU-13-359	183.10	200.56	17.46	0.39	24.2	0.9
TU-13-362	50.50	158.00	107.50	0.31	44.0	1.2
including	54.50	56.75	2.25	0.49	75.1	2.0
including	76.55	79.80	3.25	2.34	369.0	9.7
including	95.50	104.00	8.50	0.29	54.1	1.4
including	131.00	145.50	14.50	0.81	91.8	2.6
TU-13-362	169.15	175.25	6.10	0.19	64.1	1.5
TU-13-362	180.90	192.00	11.10	0.14	16.3	0.5
TU-13-366	28.50	51.00	22.50	0.16	16.2	0.5
including	28.50	31.75	3.25	0.20	38.5	1.0
including	43.75	47.75	4.00	0.40	34.2	1.1
TU-13-366	83.50	90.25	6.75	0.16	23.8	0.6
including	83.50	84.95	1.45	0.54	92.8	2.4
TU-13-366	108.65	115.00	6.35	0.36	4.4	0.5
TU-13-366	120.00	129.00	9.00	0.48	14.9	0.8
TU-13-370	67.50	80.50	13.00	0.17	64.4	1.5
including	75.00	76.50	1.50	0.63	439.0	9.4
TU-13-370	87.50	93.00	5.50	0.16	16.1	0.5
TU-13-370	99.00	108.00	9.00	1.99	139.5	4.8
including	102.00	106.00	4.00	4.36	303.6	10.4
TU-13-370	195.00	207.00	12.00	2.19	126.1	4.7
including	196.00	202.00	6.00	3.91	212.3	8.2
including	196.00	199.00	3.00	6.30	403.7	14.4
TU-13-370	237.50	296.75	59.25	1.26	21.2	1.7
including	247.50	270.00	22.50	1.51	26.2	2.0
including	247.50	254.00	6.50	2.41	25.3	2.9
including	260.00	270.00	10.00	1.68	35.2	2.4
including	280.00	292.75	12.75	2.66	36.7	3.4
including	288.75	292.75	4.00	4.14	46.7	5.1



Hole ID	From (m)	To (m)	Interval (m)	Gold (g/t)	Silver (g/t)	Gold Eq (g/t)
TU-13-373	34.50	48.50	14.00	0.08	9.2	0.3
including	55.00	56.00	1.00	5.65	822.0	22.1
TU-13-373	69.50	135.00	65.50	0.35	32.9	1.0
including	90.00	100.00	10.00	0.70	64.8	2.0
including	111.00	135.00	24.00	0.51	49.2	1.5
TU-13-373	143.50	236.00	92.50	1.48	91.1	3.3
including	143.50	161.00	17.50	2.49	141.7	5.3
including	180.00	222.50	42.50	1.96	120.4	4.4
including	184.00	196.00	12.00	2.82	156.9	6.0
including	205.50	217.20	11.70	2.97	212.1	7.2
including	210.50	217.20	6.70	4.36	287.0	10.1
TU-13-373	249.50	305.50	56.00	1.07	51.6	2.1
including	267.00	279.70	12.70	1.72	70.7	3.1
including	275.00	276.00	1.00	17.04	580.5	28.7
including	289.50	295.60	6.10	3.82	201.6	7.9
including	290.00	292.50	2.50	8.54	464.7	17.8
TU-13-378	20.50	145.00	124.50	1.04	73.5	2.5
including	26.00	27.50	1.50	2.18	102.3	4.2
including	56.50	61.00	4.50	11.51	950.2	30.5
including	116.00	130.75	14.75	2.38	162.5	5.6
TU-13-378	162.00	181.00	19.00	0.51	81.7	2.1
including	163.25	166.00	2.75	2.25	448.8	11.2

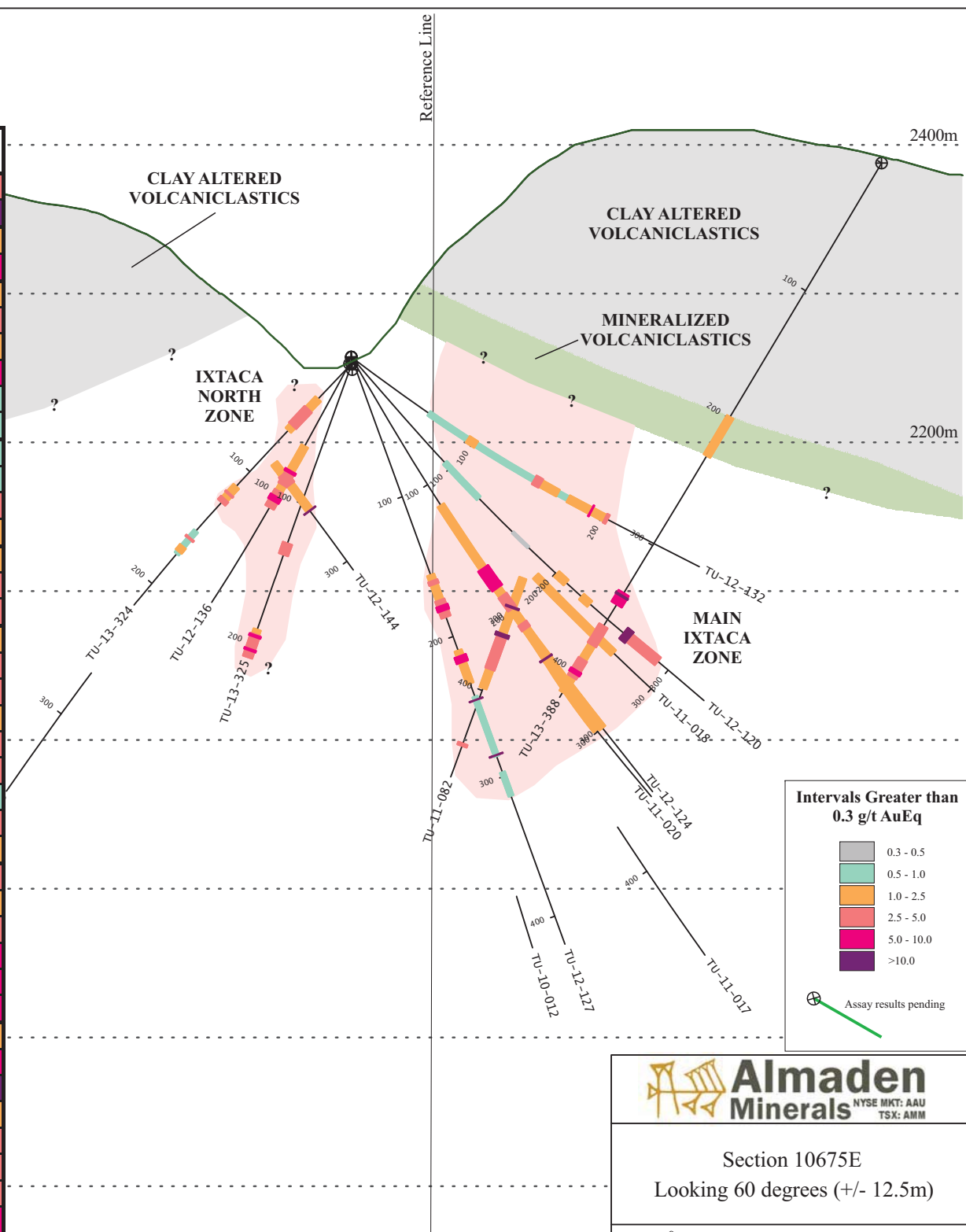
Gold Equivalent (AuEq) is calculated using silver to gold ratios of 50 to 1.

Almaden Minerals
 NYSE MKT: AAU
 TSX: AMM

Section 10475E
 Looking 60 degrees (+/- 12.5m)

0m 150m

Hole ID	From (m)	To (m)	Interval (m)	Gold (g/t)	Silver (g/t)	Gold Eq (g/t)
TU-12-120	260.90	290.90	30.00	0.74	96.7	2.7
including	260.90	266.10	5.20	2.78	437.0	11.5
TU-12-124	116.50	301.50	185.00	1.00	60.5	2.2
including	167.50	181.40	13.90	6.04	179.7	9.6
TU-12-127	155.95	186.00	30.05	0.70	56.7	1.8
including	174.00	186.00	12.00	1.05	105.7	3.2
TU-12-127	210.00	233.50	23.50	1.02	20.2	1.4
including	213.90	218.30	4.40	3.92	86.0	5.6
TU-12-127	243.00	285.60	42.60	0.57	10.8	0.8
TU-12-127	297.00	314.00	17.00	0.38	8.7	0.6
TU-12-132	64.50	204.20	139.70	0.22	18.0	0.6
including	137.00	166.60	29.60	0.35	27.8	0.9
including	148.25	153.30	5.05	1.16	79.0	2.7
including	174.40	204.20	29.80	0.33	34.1	1.0
TU-12-136	63.10	123.60	60.50	0.84	48.9	1.8
including	82.20	93.00	10.80	1.10	85.2	2.8
including	98.00	110.50	12.50	1.84	98.5	3.8
TU-13-324	32.92	62.00	29.08	1.31	16.5	1.6
including	42.50	57.75	15.25	2.10	23.7	2.6
including	43.00	45.25	2.25	1.71	72.0	3.2
TU-13-324	113.50	128.00	14.50	0.25	47.0	1.2
including	120.00	121.00	1.00	0.59	117.5	2.9
including	125.00	128.00	3.00	0.79	155.0	3.9
TU-13-324	154.00	174.00	20.00	0.08	29.1	0.7
including	160.00	161.00	1.00	0.42	167.0	3.8
including	167.50	172.00	4.50	0.07	53.4	1.1
TU-13-325	128.50	136.50	8.00	0.58	132.2	3.2
TU-13-325	190.00	236.50	46.50	1.06	53.1	2.1
including	193.40	216.00	22.60	1.72	97.2	3.7
including	194.00	195.20	1.20	2.05	147.0	5.0
including	203.90	205.00	1.10	3.97	175.0	7.5
including	210.50	216.00	5.50	4.40	240.8	9.2
TU-13-388	199.00	229.50	30.50	0.67	23.9	1.1
TU-13-388	337.50	346.50	9.00	1.35	287.5	7.1
including	339.25	340.35	1.10	6.54	1982.7	46.2
TU-13-388	363.50	416.00	52.50	0.58	50.3	1.6
including	363.50	378.40	14.90	0.74	87.0	2.5
including	372.00	378.40	6.40	1.19	138.9	4.0
including	390.00	403.90	13.90	1.11	82.9	2.8
including	398.60	401.10	2.50	1.78	173.0	5.2

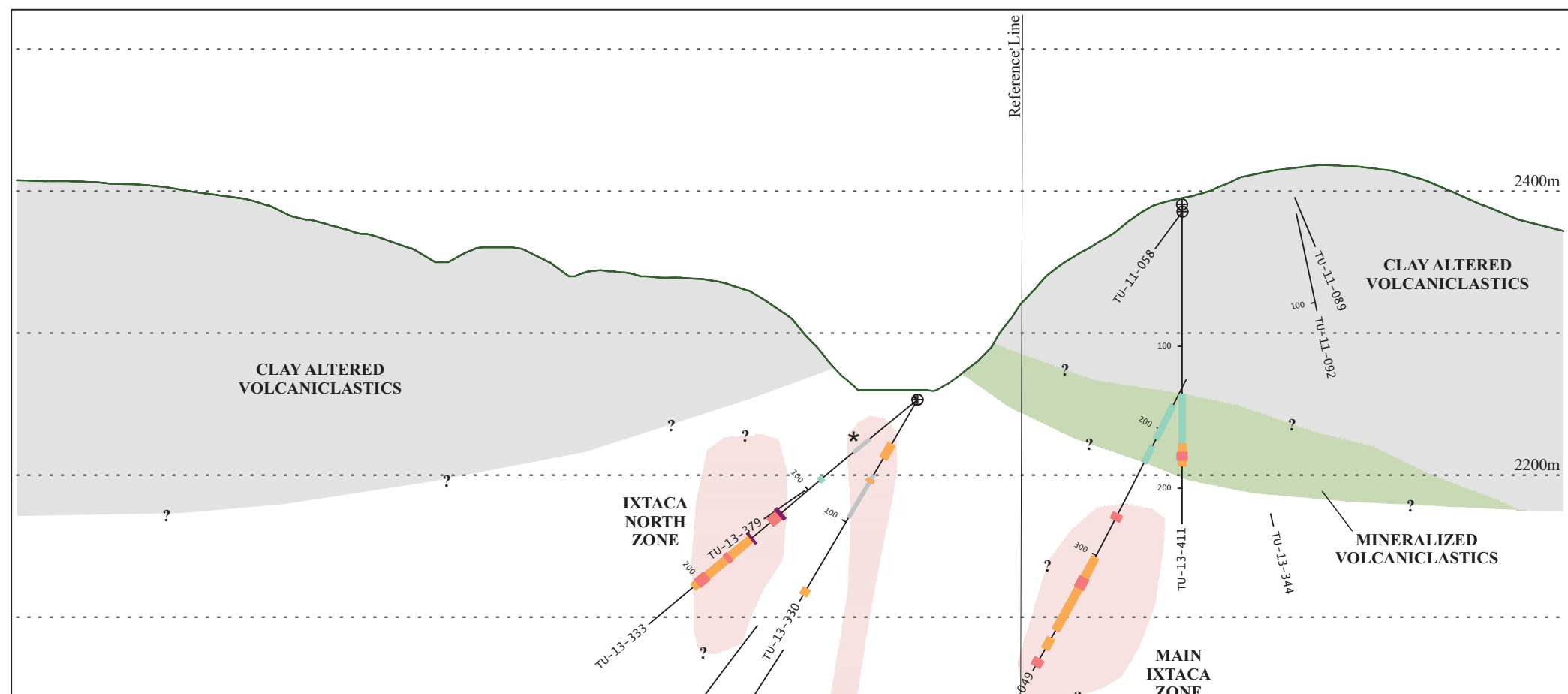


Almaden Minerals
 NYSE MKT: AAU
 TSX: AMM

Section 10675E
 Looking 60 degrees (+/- 12.5m)

0m 150m

Gold Equivalent (AuEq) is calculated using silver to gold ratios of 50 to 1.



Hole ID	From (m)	To (m)	Interval (m)	Gold (g/t)	Silver (g/t)	Gold Eq (g/t)
TU-13-330	36.58	47.50	10.92	0.62	31.8	1.3
including	37.80	42.80	5.00	1.11	37.9	1.9
TU-13-330	62.00	96.25	34.25	0.16	11.2	0.4
including	65.50	67.00	1.50	0.51	34.0	1.2
TU-13-330	155.00	159.65	4.65	0.73	53.2	1.8
TU-13-330	172.60	192.00	19.40	0.16	11.9	0.4
TU-13-333	43.60	58.30	14.70	0.14	4.5	0.2
TU-13-333	87.00	89.50	2.50	0.37	27.1	0.9
TU-13-333	125.00	135.00	10.00	0.84	128.0	3.4
including	125.00	127.00	2.00	3.71	571.0	15.1
TU-13-333	152.00	206.00	54.00	0.62	54.5	1.7
including	152.00	153.00	1.00	7.33	545.5	18.2
including	172.75	175.50	2.75	1.41	95.6	3.3
including	194.00	202.00	8.00	0.93	106.5	3.1
TU-13-411	134.00	219.00	85.00	0.50	16.5	0.8
including	169.00	184.00	15.00	1.40	28.1	2.0
including	175.00	180.00	5.00	2.06	38.8	2.8

Intervals Greater than 0.3 g/t AuEq

- 0.3 - 0.5
- 0.5 - 1.0
- 1.0 - 2.5
- 2.5 - 5.0
- 5.0 - 10.0
- >10.0

* Denotes intervals less than 0.3 g/t AuEq

⊕ Assay results pending

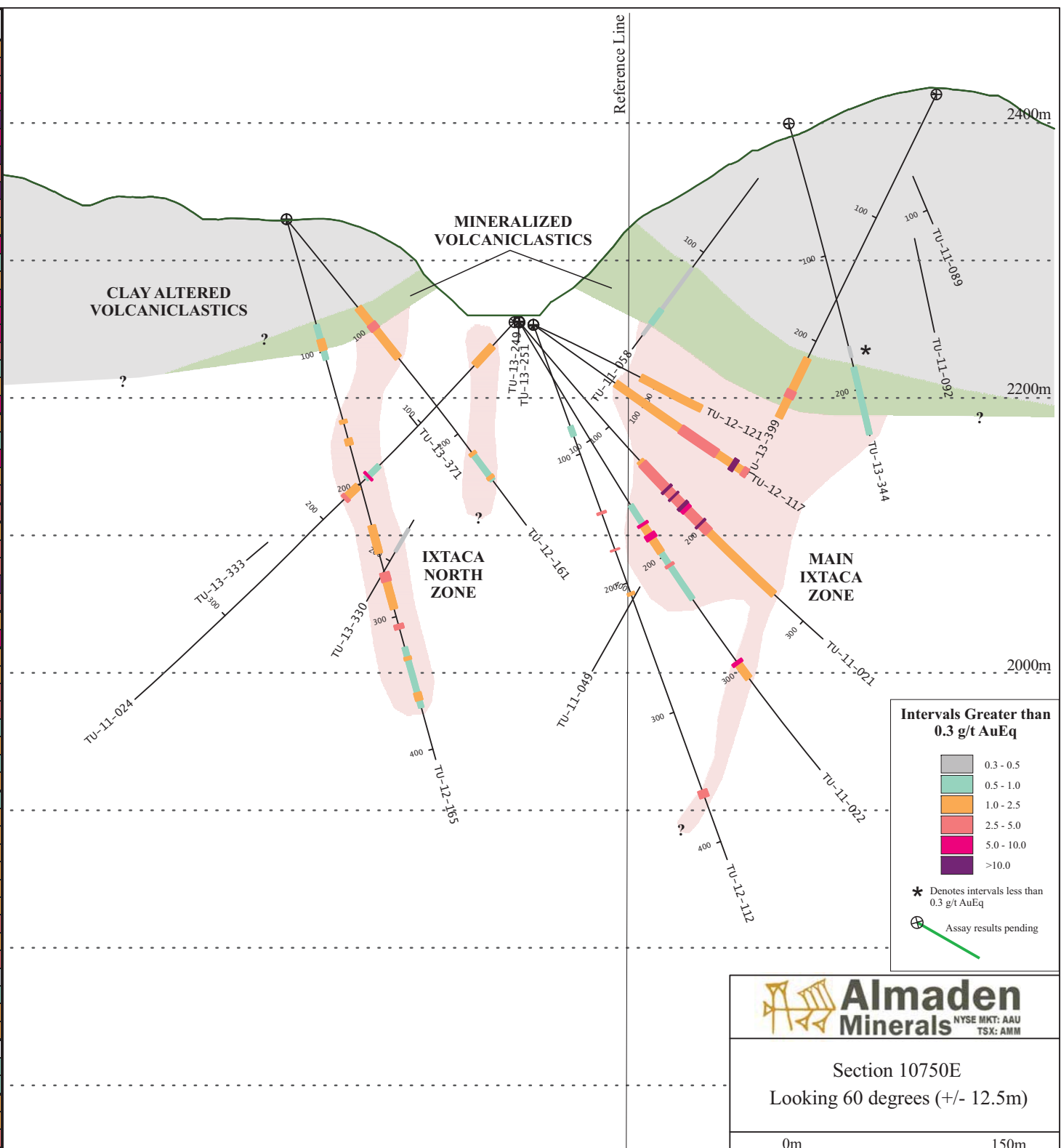
Almaden Minerals
NYSE MKT: AAU
TSX: AMM

Section 10725E
Looking 60 degrees (+/- 12.5m)

0m 150m

Gold Equivalent (AuEq) is calculated using silver to gold ratios of 50 to 1.

Hole ID	From (m)	To (m)	Interval (m)	Gold (g/t)	Silver (g/t)	Gold Eq (g/t)
TU-11-021	133.71	271.05	137.34	0.71	48.9	1.7
including	136.28	205.47	69.19	1.17	79.9	2.8
including	150.11	205.47	55.36	1.38	94.9	3.3
including	161.27	162.73	1.46	4.25	287.3	10.0
including	168.67	169.72	1.05	8.36	734.8	23.1
including	177.84	183.08	5.24	1.93	231.6	6.6
including	177.84	179.90	2.06	3.32	446.5	12.2
including	191.73	193.65	1.92	0.94	193.4	4.8
including	196.45	197.73	1.28	6.08	593.9	18.0
including	203.96	205.47	1.51	2.63	111.9	4.9
including	257.44	270.71	13.27	0.45	29.0	1.0
TU-11-022	112.90	114.01	1.11	1.37	245.6	6.3
TU-11-022	155.84	237.39	81.55	0.29	24.2	0.8
including	155.84	196.39	40.55	0.46	38.9	1.2
including	171.68	172.90	1.22	4.47	30.3	5.1
including	180.81	184.60	3.79	2.04	176.3	5.6
including	180.81	182.63	1.82	3.08	305.6	9.2
including	207.16	208.51	1.35	1.55	89.2	3.3
including	230.22	237.39	7.17	0.35	28.2	0.9
TU-11-022	293.25	308.07	14.82	0.79	55.7	1.9
including	293.25	295.25	2.00	1.30	305.5	7.4
TU-11-024	23.75	42.56	18.81	0.49	31.7	1.1
TU-11-024	143.70	157.00	13.30	0.26	30.2	0.9
including	154.00	155.10	1.10	1.62	194.1	5.5
TU-11-024	165.00	178.45	13.45	0.36	45.3	1.3
including	176.25	178.45	2.20	1.08	123.8	3.6
TU-12-112	360.50	365.55	5.05	1.89	33.0	2.5
TU-12-117	74.00	221.89	147.89	0.74	59.2	1.9
including	131.96	163.70	31.74	1.33	74.0	2.8
including	157.40	163.70	6.30	3.22	35.0	3.9
including	176.80	180.30	3.50	4.16	460.4	13.4
including	186.50	195.40	8.90	0.96	161.0	4.2
TU-12-121	87.80	199.84	112.04	0.50	40.9	1.3
including	153.70	161.45	7.75	3.18	247.8	8.1
TU-12-161	83.00	129.50	46.50	0.83	11.8	1.1
including	85.00	103.10	18.10	1.73	13.9	2.0
including	98.00	103.10	5.10	3.11	15.1	3.4
including	122.00	123.00	1.00	1.42	128.3	4.0
TU-12-161	217.05	242.00	24.95	0.23	13.9	0.5
including	217.05	218.90	1.85	0.56	55.6	1.7
including	229.00	230.77	1.77	0.39	29.7	1.0
including	238.50	240.50	2.00	1.03	28.5	1.6
TU-12-165	80.00	106.00	26.00	0.72	8.3	0.9
including	91.00	99.00	8.00	1.39	12.6	1.6
TU-12-165	152.00	154.10	2.10	0.92	50.9	1.9
TU-12-165	166.00	170.40	4.40	0.19	40.7	1.0
TU-12-165	231.50	252.00	20.50	0.44	38.8	1.2
including	238.50	248.00	9.50	0.63	57.5	1.8
TU-12-165	267.00	294.00	27.00	0.65	37.1	1.4
including	267.00	273.25	6.25	1.81	53.8	2.9
including	279.75	284.70	4.95	0.67	81.9	2.3
TU-12-165	306.00	309.10	3.10	0.70	109.7	2.9
TU-12-165	323.30	368.50	45.20	0.24	11.0	0.5
including	323.30	332.50	9.20	0.52	17.8	0.9
including	330.50	332.50	2.00	1.37	51.5	2.4
including	357.50	363.00	5.50	0.46	30.7	1.1
TU-13-344	168.00	176.00	8.00	0.17	3.6	0.2
TU-13-344	183.80	233.50	49.70	0.36	9.0	0.5
including	183.80	212.35	28.55	0.50	11.4	0.7
TU-13-399	214.00	261.52	47.52	0.64	27.1	1.2
including	228.00	247.60	19.60	1.10	43.1	2.0
including	240.00	245.60	5.60	1.54	77.9	3.1



Intervals Greater than 0.3 g/t AuEq

- 0.3 - 0.5
- 0.5 - 1.0
- 1.0 - 2.5
- 2.5 - 5.0
- 5.0 - 10.0
- >10.0

* Denotes intervals less than 0.3 g/t AuEq

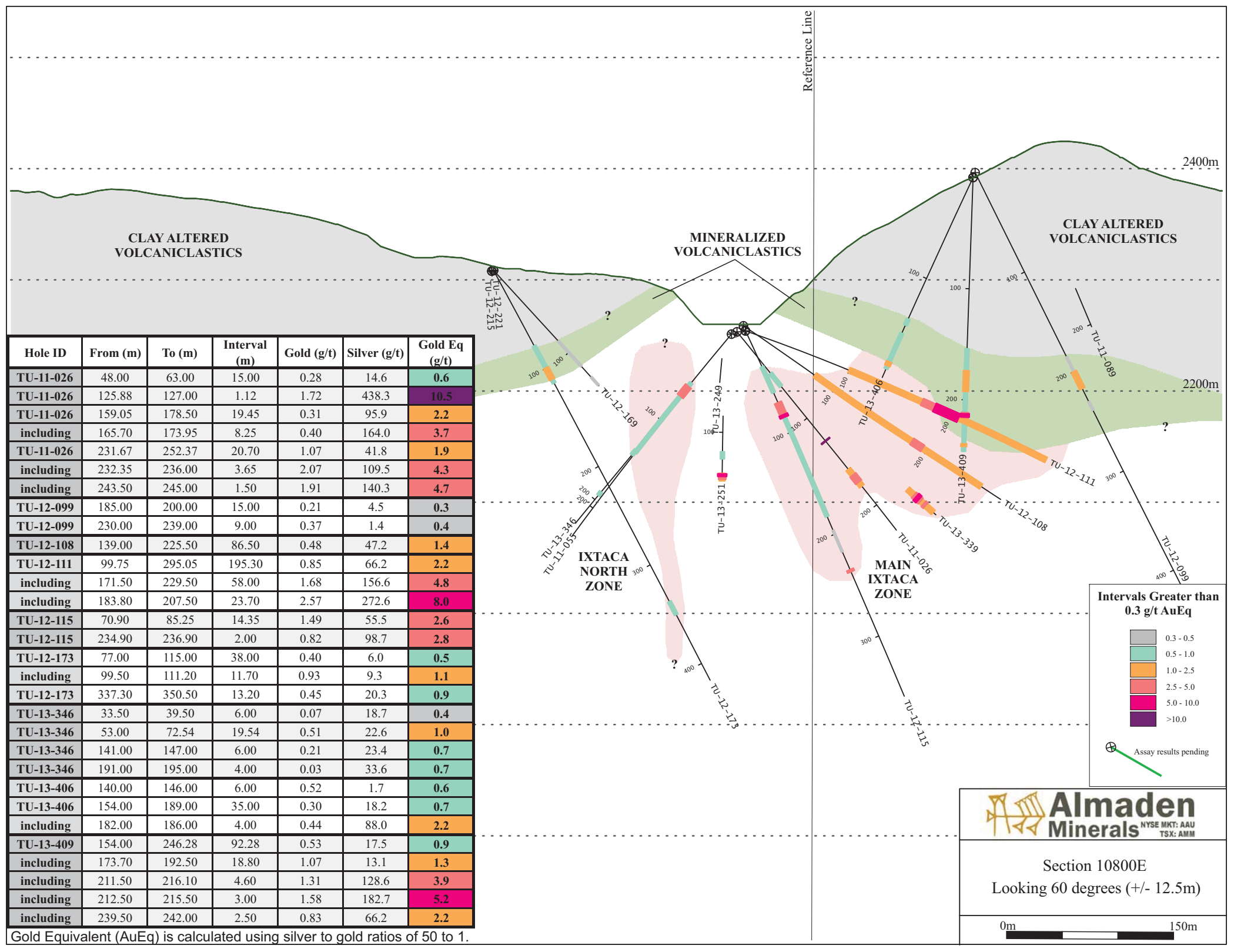
⊕ Assay results pending

Almaden Minerals
NYSE MKT: AAU
TSX: AMM

Section 10750E
Looking 60 degrees (+/- 12.5m)

0m 150m

Gold Equivalent (AuEq) is calculated using silver to gold ratios of 50 to 1.



Hole ID	From (m)	To (m)	Interval (m)	Gold (g/t)	Silver (g/t)	Gold Eq (g/t)
TU-11-026	48.00	63.00	15.00	0.28	14.6	0.6
TU-11-026	125.88	127.00	1.12	1.72	438.3	10.5
TU-11-026	159.05	178.50	19.45	0.31	95.9	2.2
including	165.70	173.95	8.25	0.40	164.0	3.7
TU-11-026	231.67	252.37	20.70	1.07	41.8	1.9
including	232.35	236.00	3.65	2.07	109.5	4.3
including	243.50	245.00	1.50	1.91	140.3	4.7
TU-12-099	185.00	200.00	15.00	0.21	4.5	0.3
TU-12-099	230.00	239.00	9.00	0.37	1.4	0.4
TU-12-108	139.00	225.50	86.50	0.48	47.2	1.4
TU-12-111	99.75	295.05	195.30	0.85	66.2	2.2
including	171.50	229.50	58.00	1.68	156.6	4.8
including	183.80	207.50	23.70	2.57	272.6	8.0
TU-12-115	70.90	85.25	14.35	1.49	55.5	2.6
TU-12-115	234.90	236.90	2.00	0.82	98.7	2.8
TU-12-173	77.00	115.00	38.00	0.40	6.0	0.5
including	99.50	111.20	11.70	0.93	9.3	1.1
TU-12-173	337.30	350.50	13.20	0.45	20.3	0.9
TU-13-346	33.50	39.50	6.00	0.07	18.7	0.4
TU-13-346	53.00	72.54	19.54	0.51	22.6	1.0
TU-13-346	141.00	147.00	6.00	0.21	23.4	0.7
TU-13-346	191.00	195.00	4.00	0.03	33.6	0.7
TU-13-406	140.00	146.00	6.00	0.52	1.7	0.6
TU-13-406	154.00	189.00	35.00	0.30	18.2	0.7
including	182.00	186.00	4.00	0.44	88.0	2.2
TU-13-409	154.00	246.28	92.28	0.53	17.5	0.9
including	173.70	192.50	18.80	1.07	13.1	1.3
including	211.50	216.10	4.60	1.31	128.6	3.9
including	212.50	215.50	3.00	1.58	182.7	5.2
including	239.50	242.00	2.50	0.83	66.2	2.2

Intervals Greater than 0.3 g/t AuEq

- 0.3 - 0.5
- 0.5 - 1.0
- 1.0 - 2.5
- 2.5 - 5.0
- 5.0 - 10.0
- >10.0

Assay results pending

Almaden Minerals
NYSE MKT: AAU
TSX: AMM

Section 10800E
Looking 60 degrees (+/- 12.5m)

0m 150m

Gold Equivalent (AuEq) is calculated using silver to gold ratios of 50 to 1.

