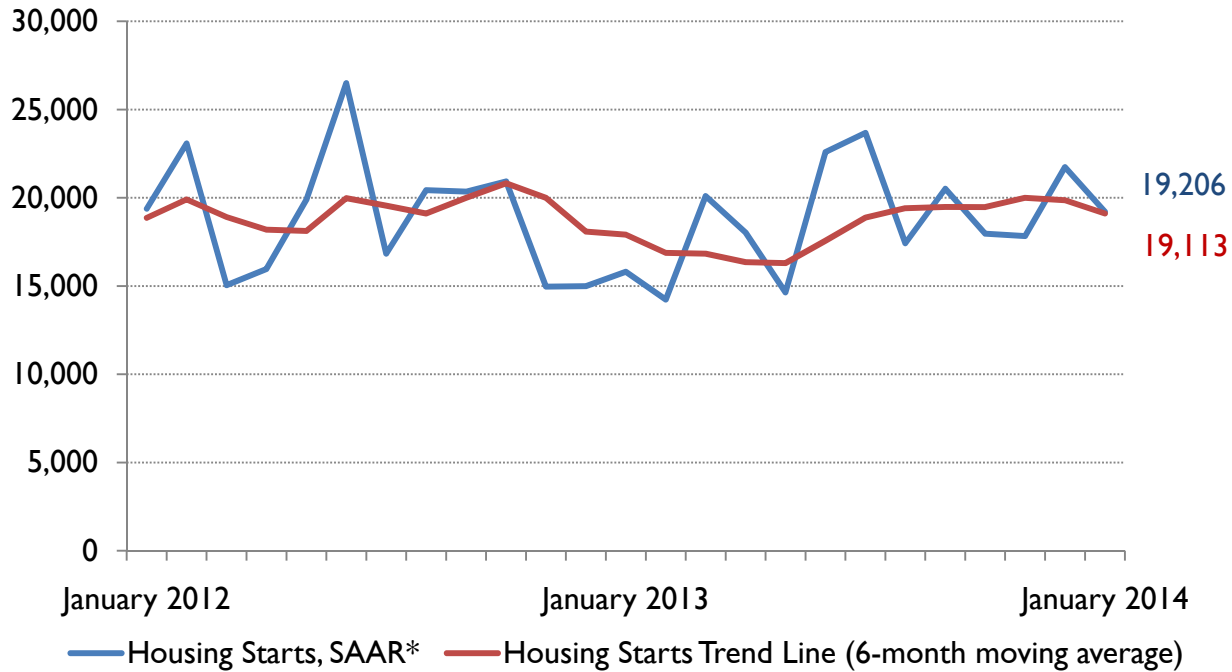


# Vancouver CMA Housing Starts



\*SAAR: Seasonally Adjusted Annual Rate

**Preliminary Housing Start Data  
January 2014**

<b>Vancouver CMA<sup>1</sup></b>	<b>December 2013</b>	<b>January 2014</b>
Trend <sup>2</sup>	19,858	19,113
SAAR	21,741	19,206
<b>Vancouver CMA</b>	<b>January 2013</b>	<b>January 2014</b>
Actual		
January - Single-detached	353	409
January - Multiples	1,417	1,267
January - Total	1,770	1,530
<b>Abbotsford-Mission CMA<sup>1</sup></b>	<b>December 2013</b>	<b>January 2014</b>
Trend <sup>2</sup>	693	689
SAAR	1,307	253
<b>Abbotsford-Mission CMA</b>	<b>January 2013</b>	<b>January 2014</b>
Actual		
January - Single-detached	13	15
January - Multiples	7	1
January - Total	20	16

Source: CMHC

<sup>1</sup>Census Metropolitan Area

<sup>2</sup>The trend is a six-month moving average of the monthly seasonally adjusted annual rates (SAAR).

Detailed data available upon request

**Vancouver CMA Preliminary Actual Housing Starts Data**  
**January / 2013 - 2014**

	Singles		Multiples		Total	
	2013	2014	2013	2014	2013	2014
Anmore VL	0	4	0	0	0	4
Belcarra VL	0	2	0	0	0	2
Bowen Island IM	2	2	1	0	3	2
Burnaby CY	21	23	2	96	23	119
Coquitlam CY	17	24	20	19	37	43
Delta DM	7	8	9	6	16	14
Langley CY	0	0	0	25	0	25
Langley DM	14	7	10	137	24	144
Lions Bay VL	0	0	0	0	0	0
Maple Ridge DM	11	12	0	15	11	27
New Westminister CY	2	3	22	15	24	18
North Vancouver CY	0	0	199	281	199	281
North Vancouver DM	10	8	9	3	19	11
Pitt Meadows CY	1	0	0	66	1	66
Port Coquitlam CY	1	5	21	24	22	29
Port Moody CY	0	0	0	2	0	2
Richmond CY	17	20	99	44	116	64
Surrey CY	60	78	219	170	279	248
University Endowment Lands	0	1	155	94	155	95
Vancouver CY	143	67	154	270	297	337
West Vancouver DM	12	7	0	0	12	7
White Rock CY	5	1	3	0	8	1
<b>Vancouver CMA Total</b>	<b>323</b>	<b>272</b>	<b>923</b>	<b>1,267</b>	<b>1,246</b>	<b>1,539</b>
<b>ABBOTSFORD – MISSION CMA Total</b>	<b>13</b>	<b>15</b>	<b>7</b>	<b>1</b>	<b>20</b>	<b>16</b>
<b>CHILLIWACK CA Total</b>	<b>11</b>	<b>9</b>	<b>11</b>	<b>72</b>	<b>22</b>	<b>81</b>

Source: CMHC