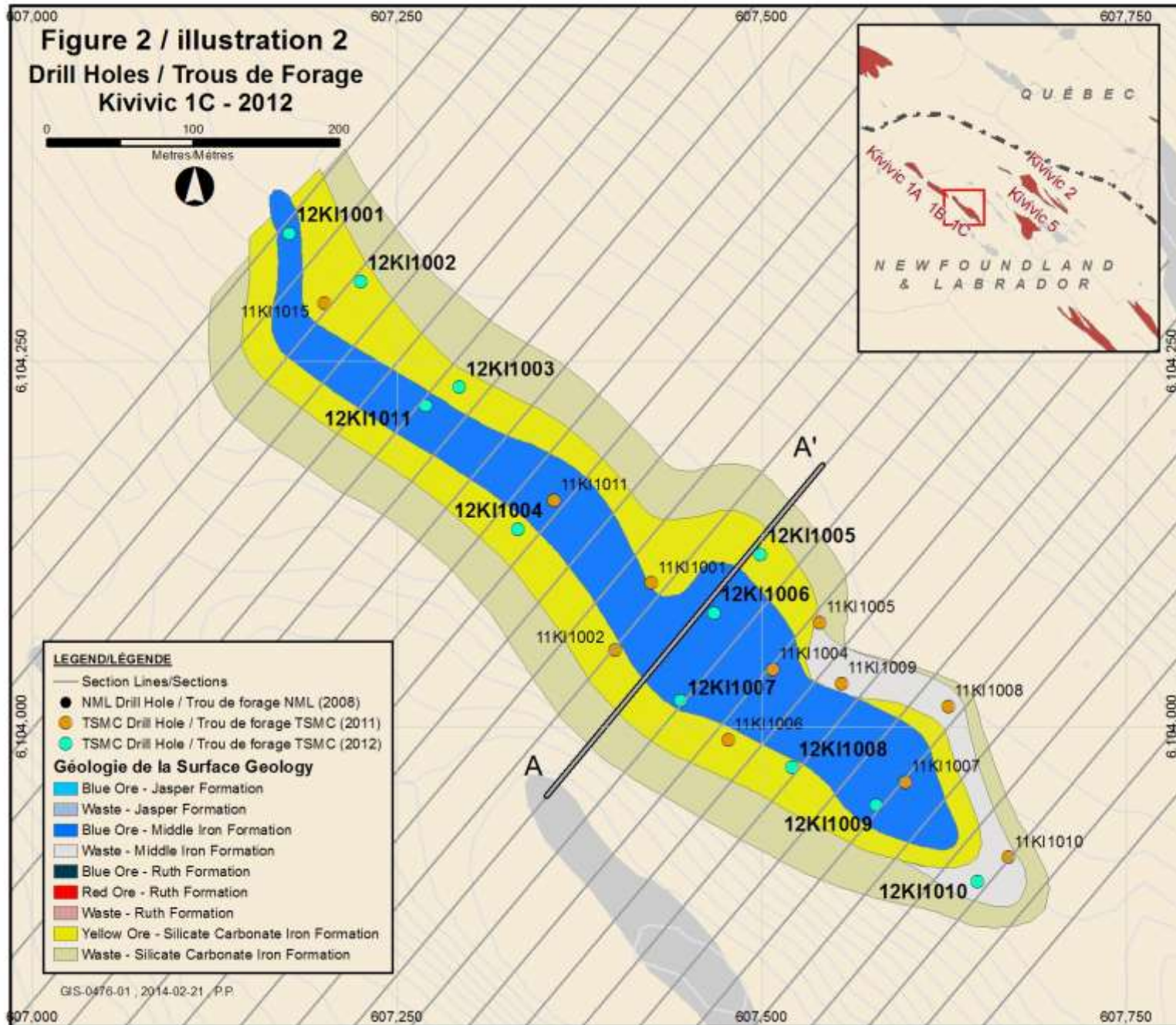
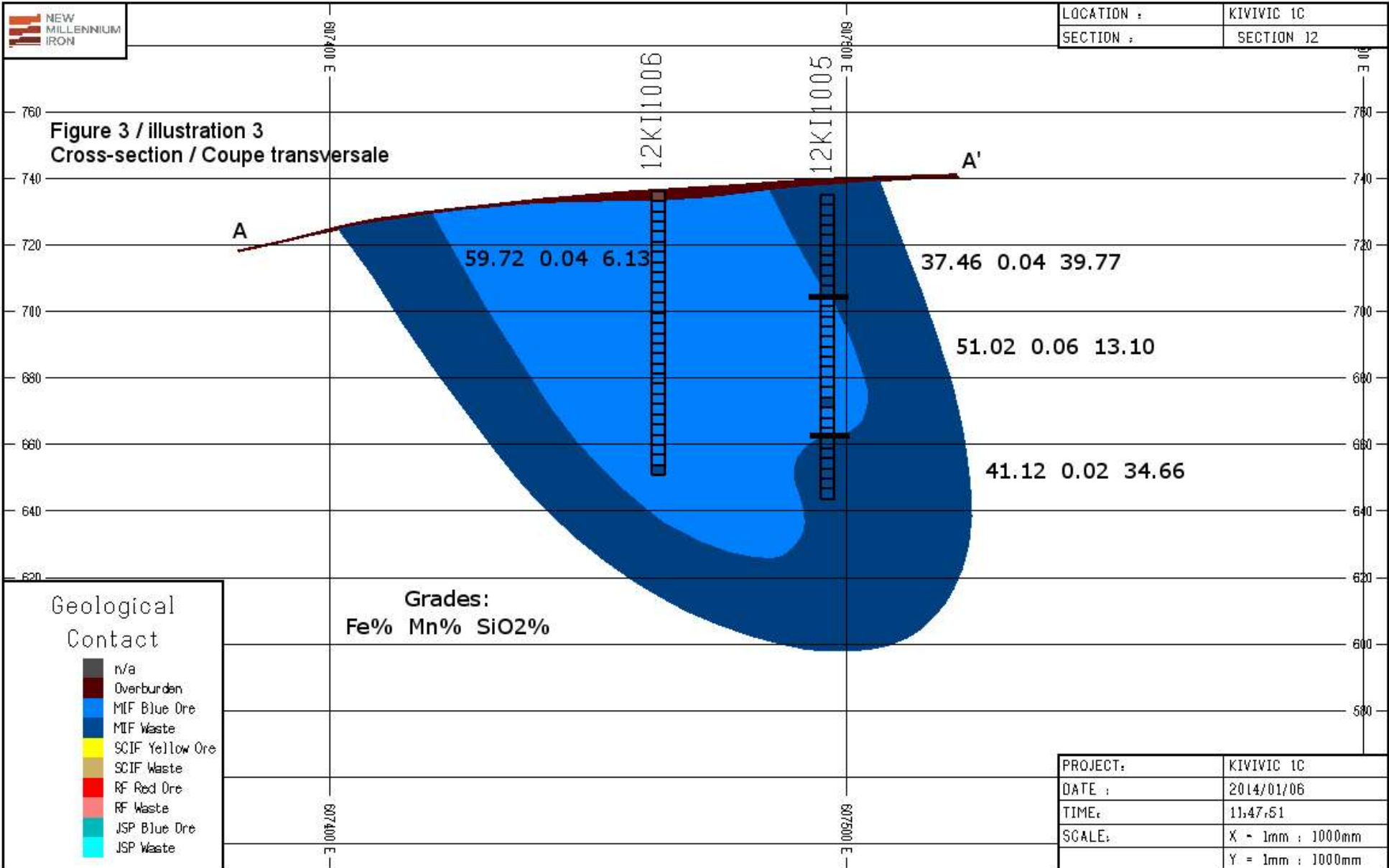


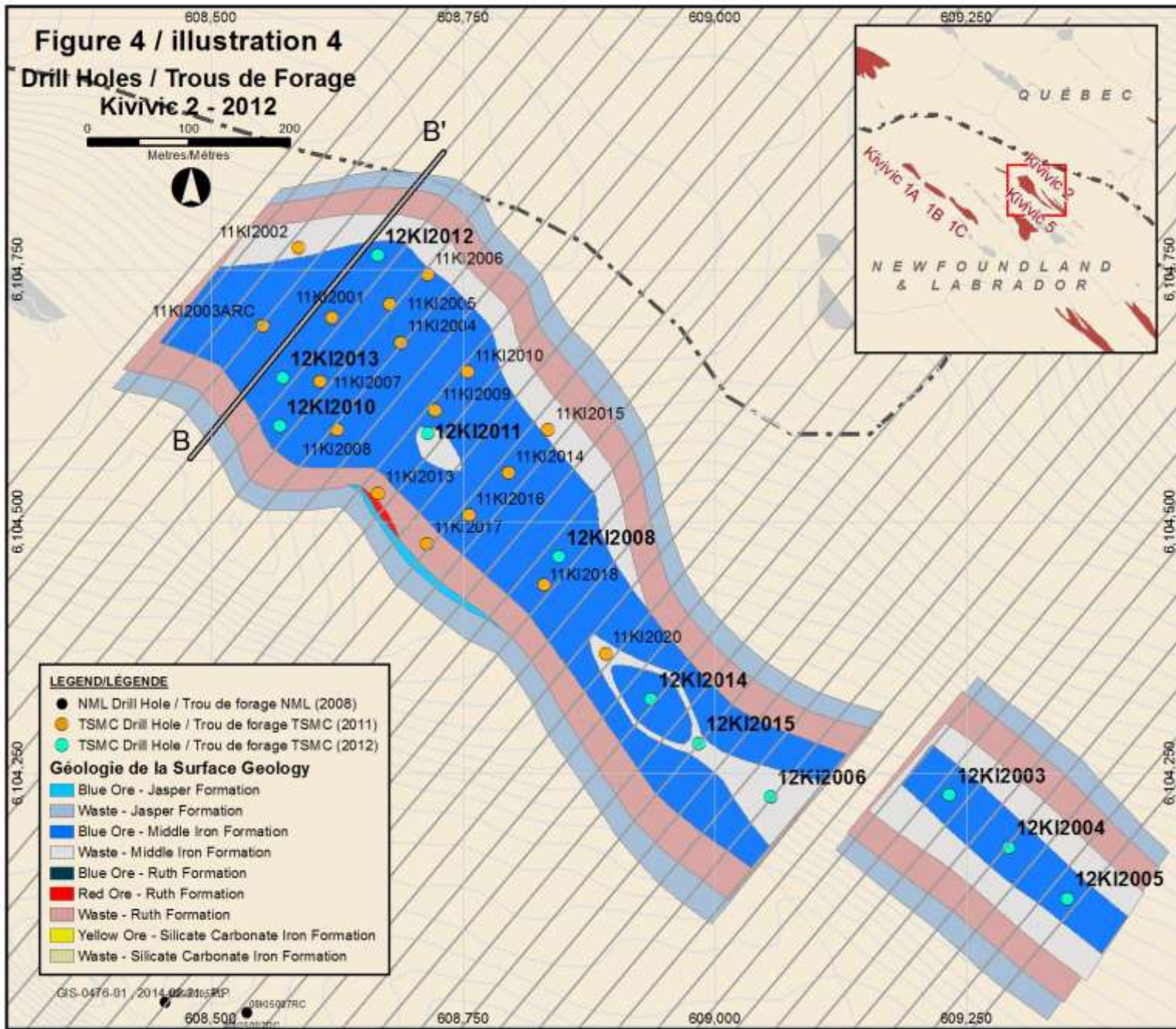
Appendix 1

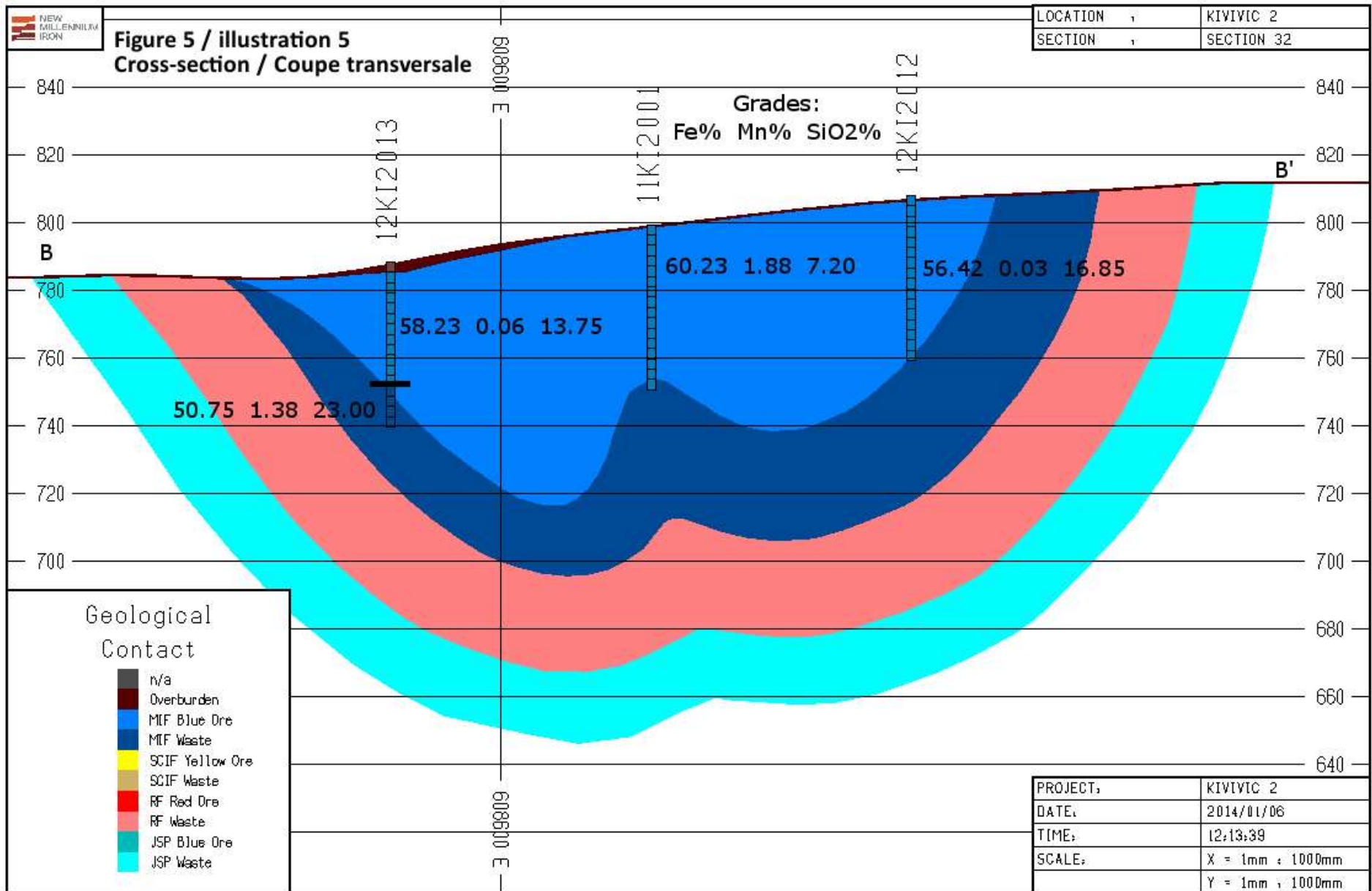
Table 7

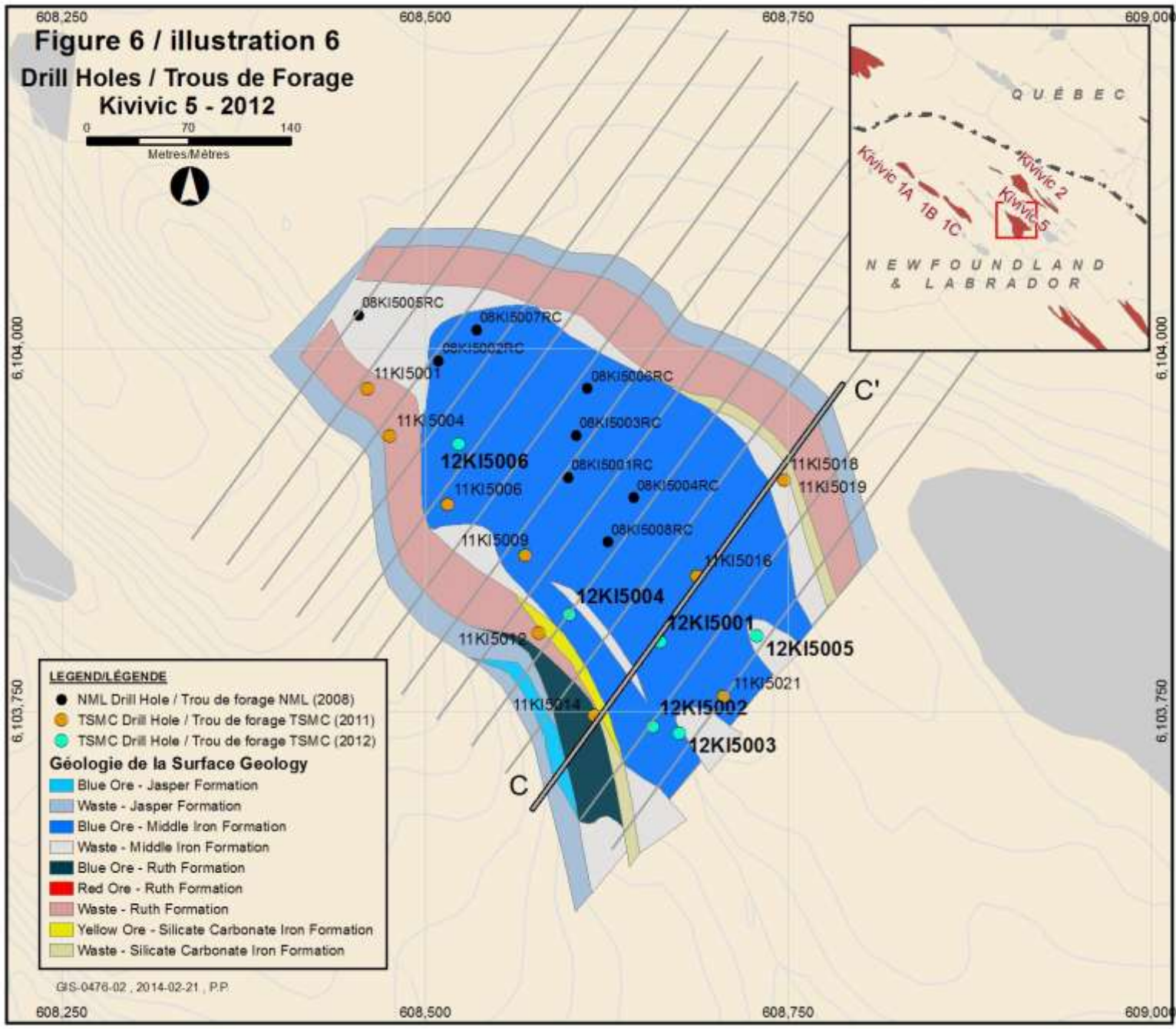
Deposit	Hole No	Ore Interval meters		Length m	Average Assay%						
		From	To		Fe	SiO2	Al2O3	Mn	P	LOI	
Kivivic 1	12K11001	3.05	15.24	12.19	51.59	17.51	1.2	0.05	0.072	6.30	
	12K11005	27.43	73.15	45.72	50.95	12.54	0.638	0.05	0.047	6.83	
	12K11009	0.00	30.48	30.48	60.17	8.43	0.404	0.03	0.021	4.68	
	12K11010	0.00	24.38	24.38	59.74	8.36	0.414	0.03	0.027	5.24	
	12K11006	3.05	85.34	82.29	59.73	6.13	0.77	0.04	0.03	5.59	
	12K11011	0.00	48.77	48.77	58.60	10.21	1.12	0.04	0.17	3.73	
Average				243.83	57.51	9.23	0.755	0.04	0.062	5.34	
Kivivic 2	12K12008	0.00	42.67	42.67	63.13	8.12	0.22	0.05	0.005	1.21	
	12K12011	21.34	42.67	21.33	66.81	2.69	0.194	0.03	0.006	1.47	
	12K12013	3.05	39.62	36.58	58.23	13.75	0.86	0.06	0.007	1.98	
	12K12003	0.00	12.19	12.19	63.37	7.04	0.352	0.34	0.004	0.39	
	12K12004	0.00	15.24	15.24	57.85	15.47	0.85	0.08	0.004	0.54	
	12K12005	6.10	36.58	30.48	57.92	16.12	0.343	0.05	0.001	0.49	
	12K12006	21.34	36.58	15.24	62.32	9.77	0.11	0.06	0.004	0.89	
	12K12010	15.24	33.53	18.29	58.88	10.69	1.585	0.05	0.032	3.17	
	12K12012	0.00	33.53	33.53	58.61	13.40	0.40	0.03	0.005	2.05	
	12K12014	0.00	15.24	15.24	56.87	11.75	2.49	0.03	0.031	4.06	
			21.34	36.58	15.24	58.67	14.09	0.396	0.054	0.004	1.48
	12K12015	6.10	36.58	30.48	61.90	8.38	1.054	0.05	0.014	1.73	
	Average				286.51	60.41	11.04	0.673	0.06	0.009	1.61
	Kivivic 5	12K15001	0.00	24.38	24.38	63.58	4.61	0.406	0.024	0.006	3.58
		12K15002	3.05	36.58	33.53	61.83	9.41	0.266	0.044	0.004	1.74
12K15004		0.00	36.58	36.58	59.94	12.45	0.375	0.029	0.004	1.30	
12K15006		3.05	36.58	33.53	60.84	10.35	0.489	0.027	0.006	2.00	
Average					128.02	61.36	9.61	0.382	0.031	0.005	2.03

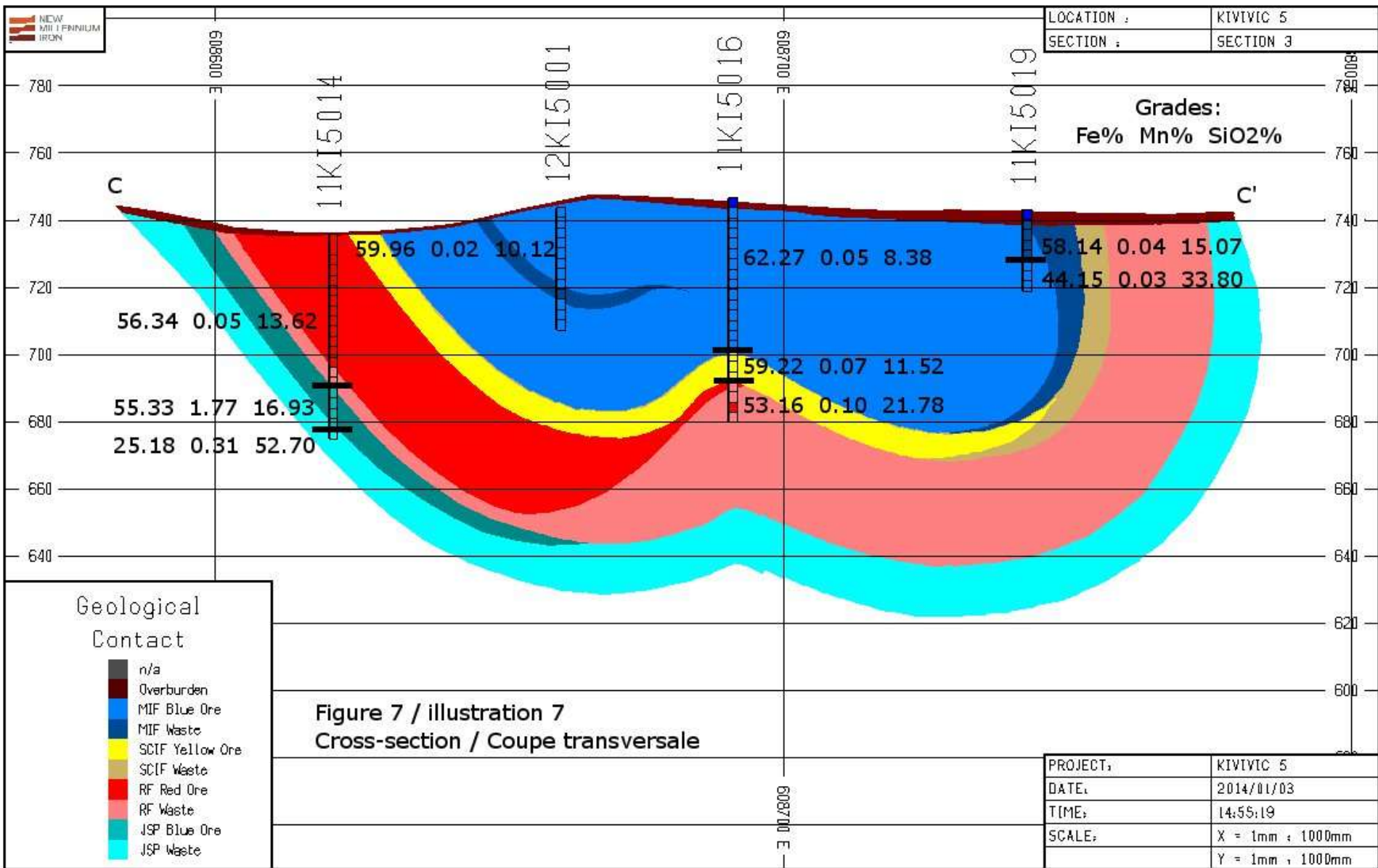












Appendix 3

Table 8

Anomaly	Ground Gravity		Coordinates (UTM)		Area	Line	Remarks
	Bouguer (mgals)	Residual (mgals)	Easting	Northing			
F-3	-75.27	0.64	619220	6088855	Goodreem	112	On the SW flank of a magnetic anomaly
F-4	-75.7	0.62	619220	6088855	Goodreem	112	Weak magnetic anomaly
F-5	-78.74	0.62	619220	6088855	Goodreem	112	No magnetic anomaly
F-8	-76.28	0.57	620100	6088045	Goodreem	100	Weak magnetic anomaly
F-9	-77.92	0.72	619940	6087880	Goodreem	98	Goodreem DSO showing
A-2	-79.54	1.63	627032	6085353	Sawmill	32	Weak magnetic anomaly
A-3	-79.4	0.86	627081	6084883	Sawmill	28	No magnetic anomaly
A-4	-79.95	0.32	626753	6084790	Sawmill	30	No magnetic anomaly
A-5	-79.63	0.48	626884	6084368	Sawmill	26	No magnetic anomaly
A-6	-79.63	0.42	626812	6084298	Sawmill	26	No magnetic anomaly
A-7	-78.91	1.05	626363	6084683	Sawmill	32	Sawmill No. 1 Deposit
A-8	-77.57	0.58	626223	6084259	Sawmill	30	Extension of Fleming No. 9 Deposit
B-1	-73.73	1.31	622757	6089848	Barney	94	Weak magnetic anomaly
B-3	-75.43	1.01	622294	6089389	Barney	94	No magnetic anomaly
C-1,2,3,4,5	-78.96	2.91	623852	6093487	Lac La Tesserie	112	No magnetic anomaly. Best target of the survey
C-6,7	-79.33	1.08	622730	6094625	Lac La Tesserie	128	No magnetic anomaly
C-8,9,10	-79.72	1.49	622084	6095395	Lac La Tesserie	138	No magnetic anomaly
D-3	-73.49	1.61	620957	6091737	Allspur Lake	120	No magnetic anomaly
D-4	-74.07	1.16	620883	6091665	Allspur Lake	120	No magnetic anomaly
D-6	-75.42	0.71	620807	6091296	Allspur Lake	118	No magnetic anomaly
D-7	-77.16	0.45	620525	6091300	Allspur Lake	120	Weak magnetic anomaly. Extension of Barney No. 1 Deposit
D-8	-78.06	0.90	620350	6091133	Allspur Lake	120	No magnetic anomaly
D-9	-77.60	1.24	620240	6091026	Allspur Lake	120	Extension of Barney No. 1 Deposit
D-10	-77.20	0.55	620070	6090850	Allspur Lake	120	No magnetic anomaly
D-11	-75.26	1.04	619676	6090460	Allspur Lake	120	NE of a magnetic anomaly
D-13	-78.04	0.60	619538	6092013	Allspur Lake	132	Extension of Barney No. 1 Deposit
D-15	-74.60	1.36	618862	6091345	Allspur Lake	132	Weak magnetic anomaly
E-7	-75.70	0.94	618080	6094245	Guy Lake	158	Associated with weak magnetic anomaly
E-8	-76.96	0.79	617980	6094140	Guy Lake	158	Weak magnetic anomaly
E-14	-78.35	1.51	616745	6094727	Guy Lake	171	Weakly magnetic. Extension of Barney No. 1 Deposit
E-15	-75.56	0.79	616155	6094465	Guy Lake	172	Weak magnetic anomaly