

Figure 1: Kipushi cross-section showing mine infrastructure, Big Zinc Discovery and Kipushi Fault Zone.

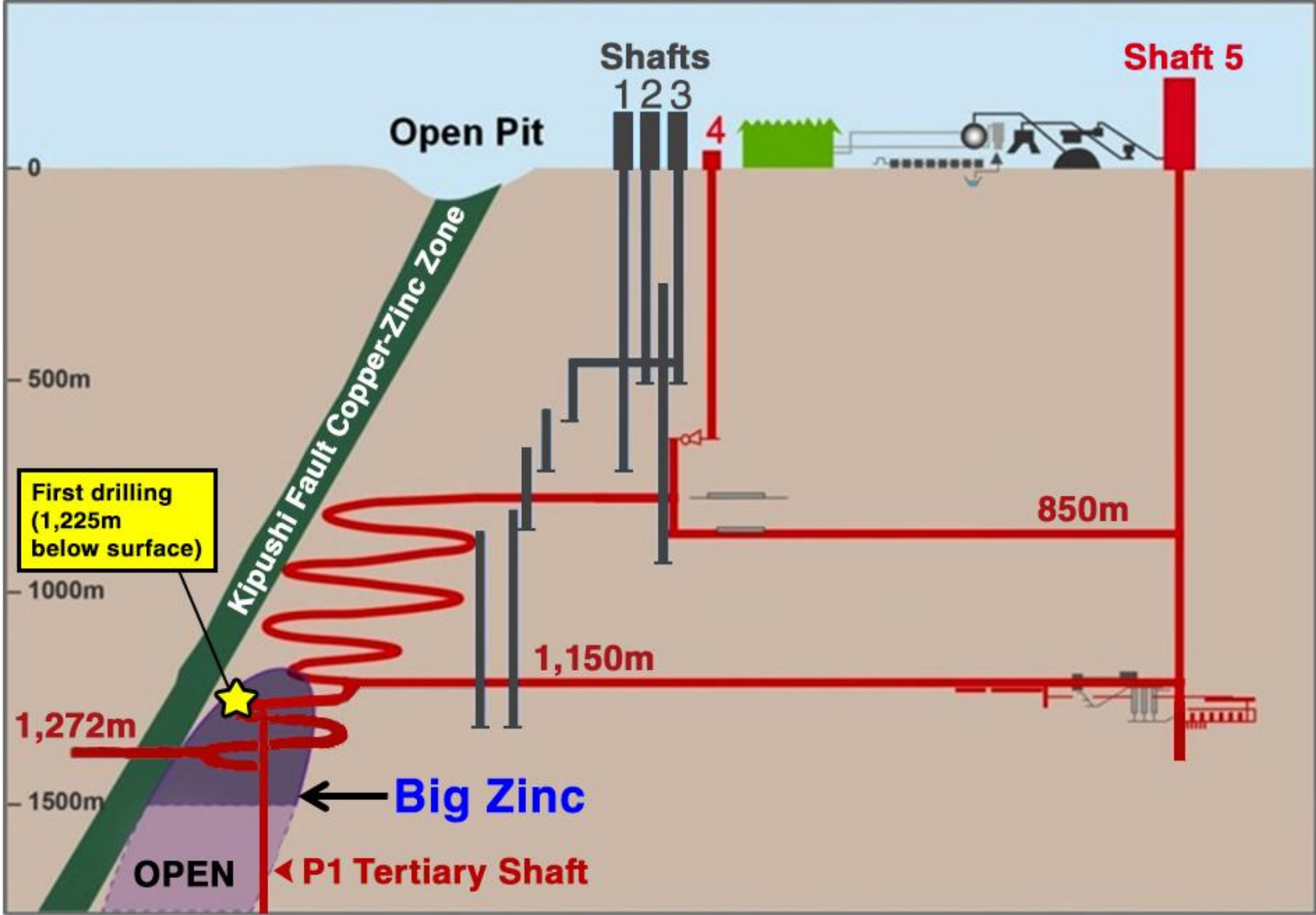


Figure 2: Kipushi cross-section showing Ivanhoe drill holes KPU001 and KPU002.

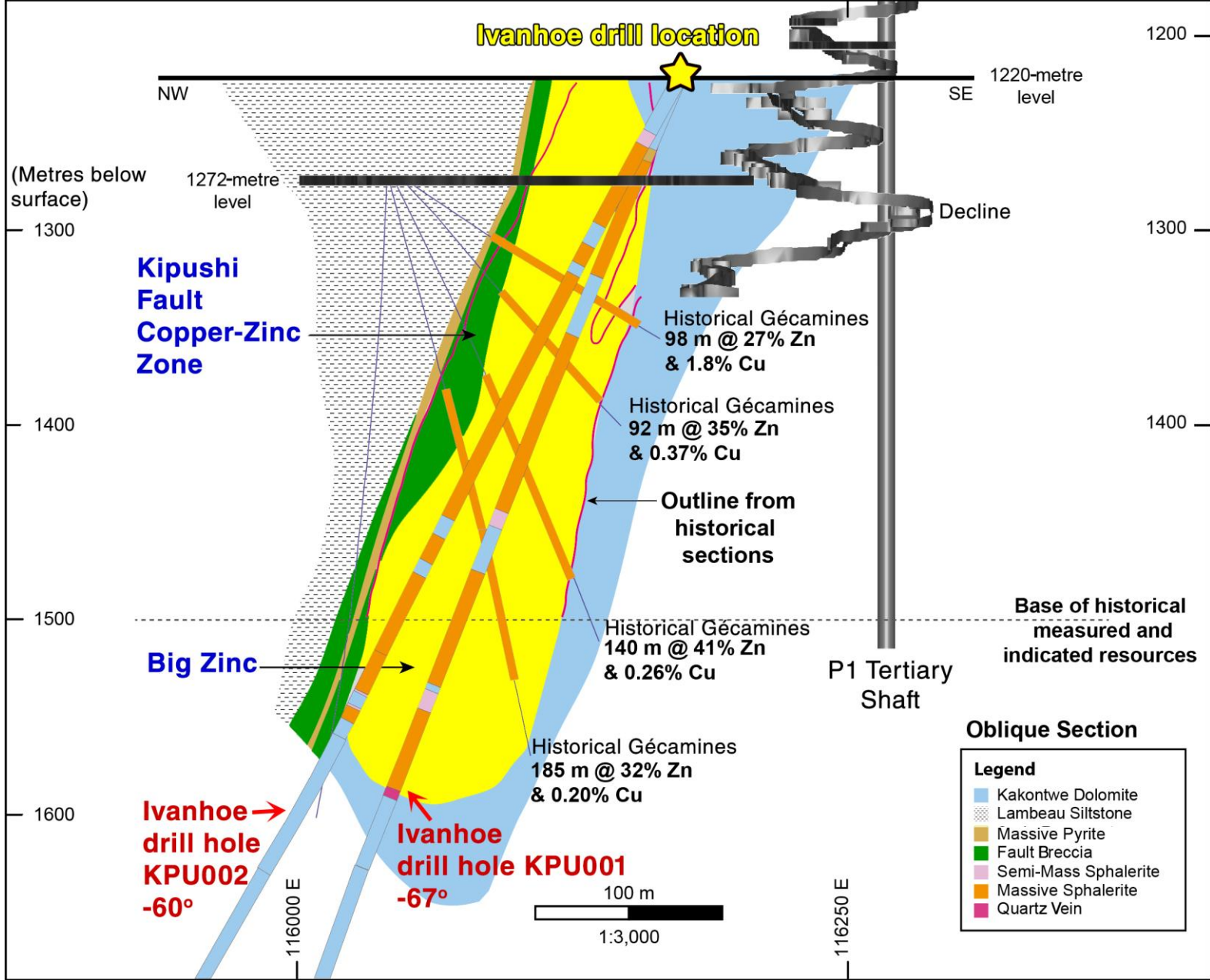


Figure 3: Kipushi cross-section showing Ivanhoe drill hole KPU003.

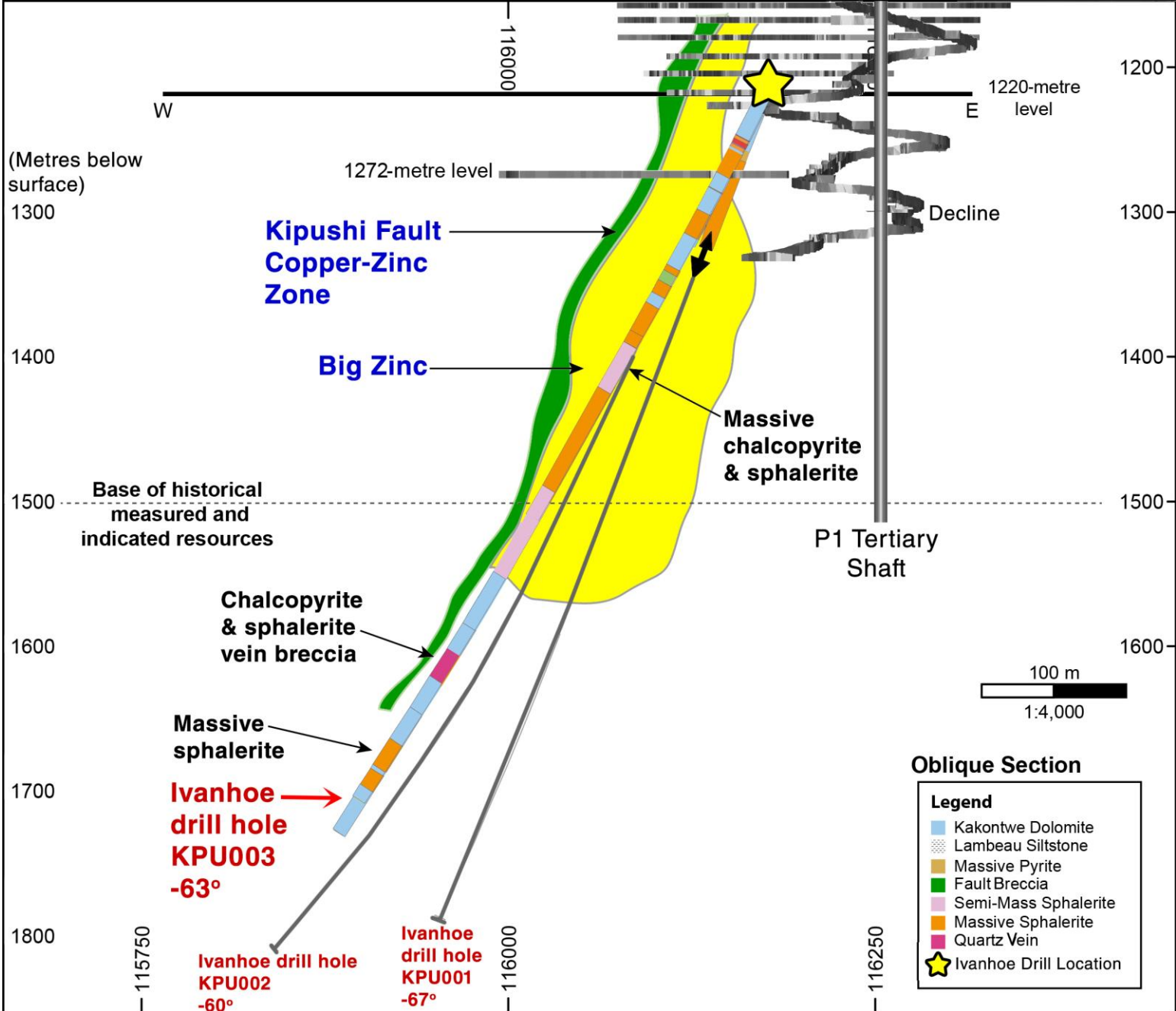
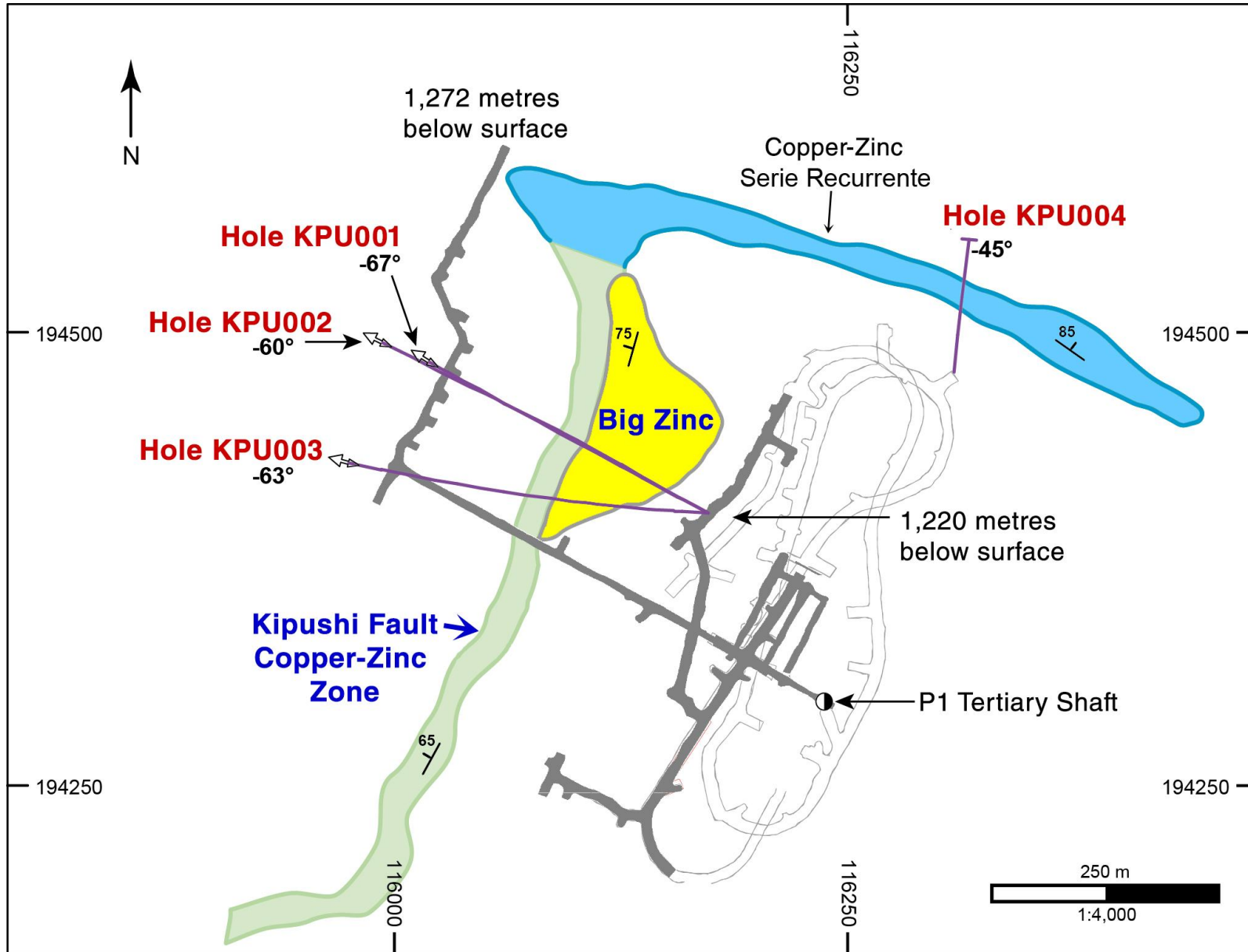


Figure 4: Plan view of drill holes KPU001 to KPU004.



Note: Mineralized zones depicted with their approximate position and geometry on the 1,220-metre level.

Figure 5: Core from Ivanhoe drill hole KPU001 showing massive red-brown sphalerite and pyrite.



Figure 6: Core from Ivanhoe drill hole KPU003 showing massive orange sphalerite and pyrite.



Figure 7: Hole KPU003 massive chalcopyrite-pyrite-sphalerite-galena intercept from depth of 207.8 to 215.4 metres (not true width).



Figure 8: Core sample of chalcopyrite intercept from 59.7 to 62.0 metres in Hole KPU004.





Figure 9: One of the compact rigs conducting Ivanhoe's underground drilling program.

